



GWEN O'NEIL
WILD MOUNTAIN THYME

ANAT EBGI

ANAT EBGI

GWEN O'NEIL

Wild Mountain Thyme

May 13 - June 24, 2023

6150 Wilshire Blvd

Anat Ebgi is pleased to announce *Wild Mountain Thyme*, the debut solo exhibition of Los Angeles painter Gwen O'Neil, on view at 6150 Wilshire Blvd, May 13 - June 24, 2023. An opening reception will take place Saturday, May 13, from 5 - 8pm.

The exhibition is a love letter to Los Angeles, to its striking quality of light, its proximity to the ocean, its expansive skies and majestic mountains. The title, *Wild Mountain Thyme* refers to a Scottish/Irish folk song of the same name, occasionally known as "*Purple Heather*"—apt given O'Neil's bold usage of purple. The song, a love song, was adapted and performed by countless artists and musicians over the last seventy years including James Taylor, The Byrds, and Joan Baez.

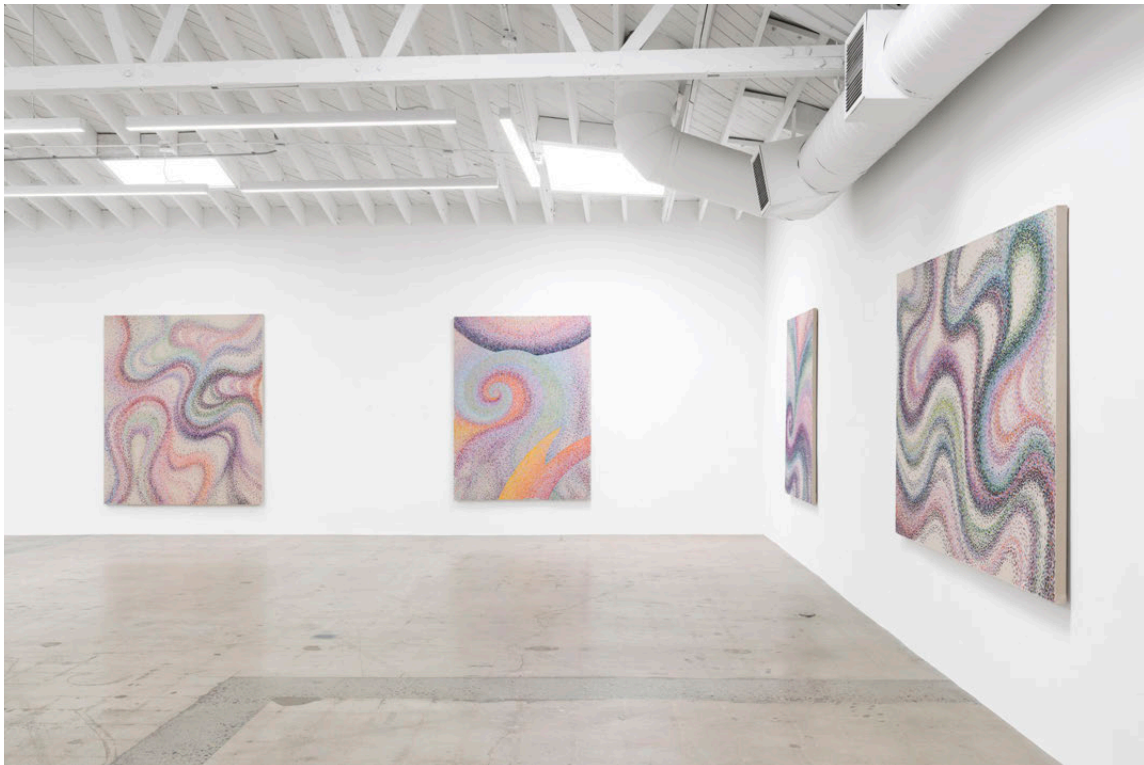
As a colorist, O'Neil intuitively and methodically mixes and then dabs pigment-loaded brushes on raw canvas in a chorus of elaborate chromatic harmonies. Her compositions comprise wave-like color shifts of repetitive stippled brushwork, crashing, swirling and buzzing across the surface like static. The luminous canvases draw inspiration from nature and across works O'Neil captures Southern California twilight, contemplates spiraling geometry of shells, and interprets hypnotic formations of starlings, known as murmurations.

Unifying gestures of opening and closing, expanding and collapsing, convey a sense of motion, urgency, dynamism. These cascades of energy guide the eye across winding contours, suggested altitudes—expansive horizons, and Hollywood's ridge roads. O'Neil listens intuitively to the workings of her process. Her all-over compositions maintain a balance between steady systematic marks and an improvisational looseness explored through color. Formally and conceptually the works hearken to a west coast tradition of capturing light, luminosity, and atmospheric color. The exhibition serves as a manifesto of the invisible forces and energies that surround us.

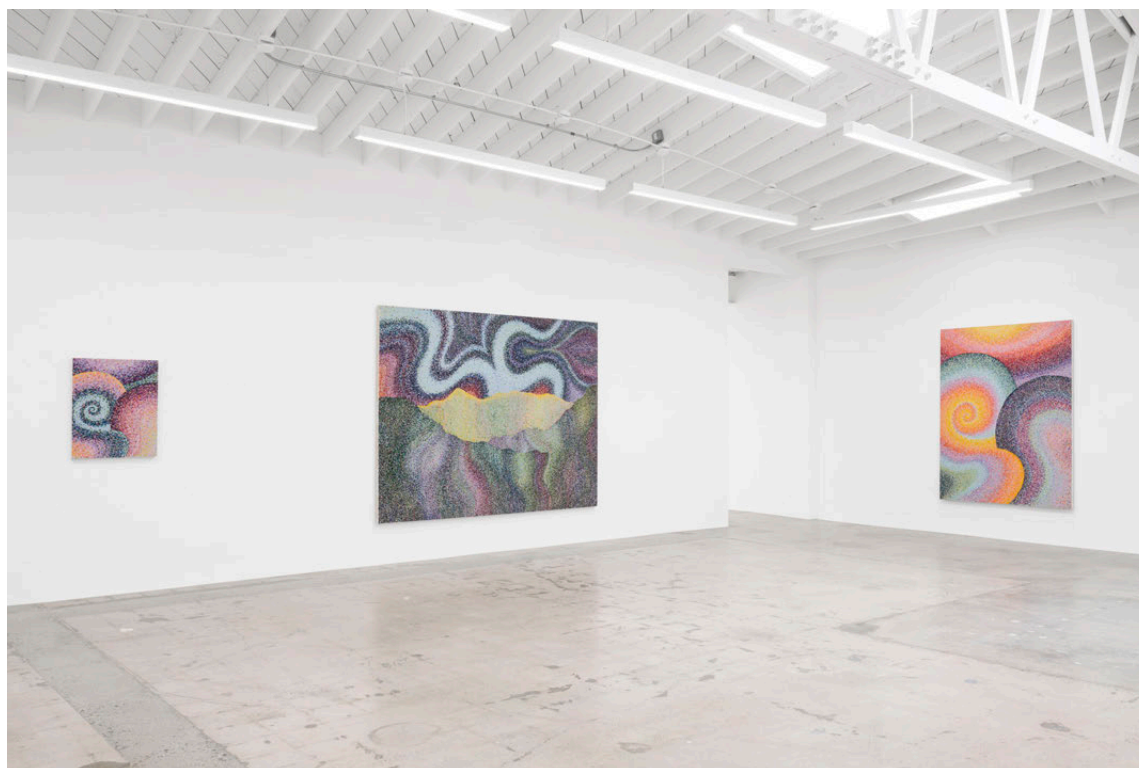
Gwen O'Neil (b. 1992, New York, NY) received her BFA from Savannah College of Art and Design, Savannah, GA. This solo exhibition follows recent presentations of O'Neil's work by Anat Ebgi in group contexts including KIAF (Korea International Art Fair), Seoul, Korea; The Armory Show, New York NY; Felix Art Fair, Los Angeles, CA; and *If you forget my name, You will go astray*—at the gallery's new Fountain Avenue location. O'Neil lives and works in Los Angeles, CA.

ANAT EBGI

Gwen O'Neil, *Wild Mountain Thyme*, Solo exhibition, Anat Ebgi, Los Angeles, CA
May 13 – June 24, 2023



ANAT EBGİ



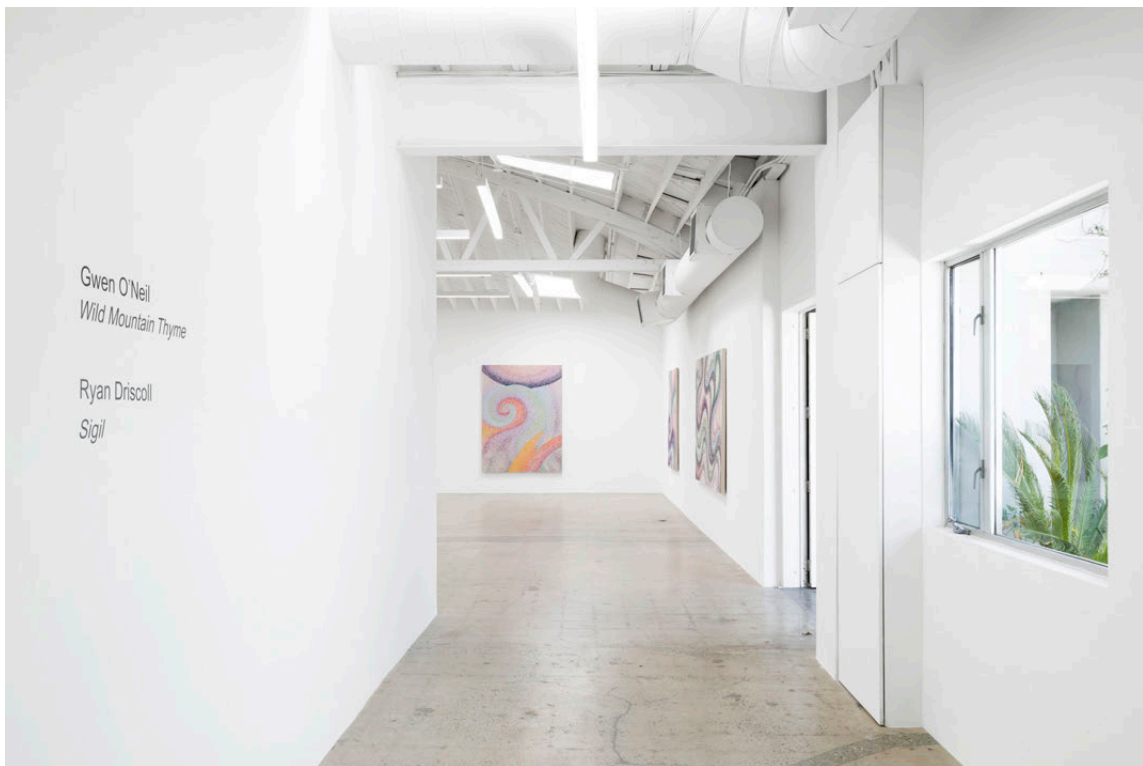
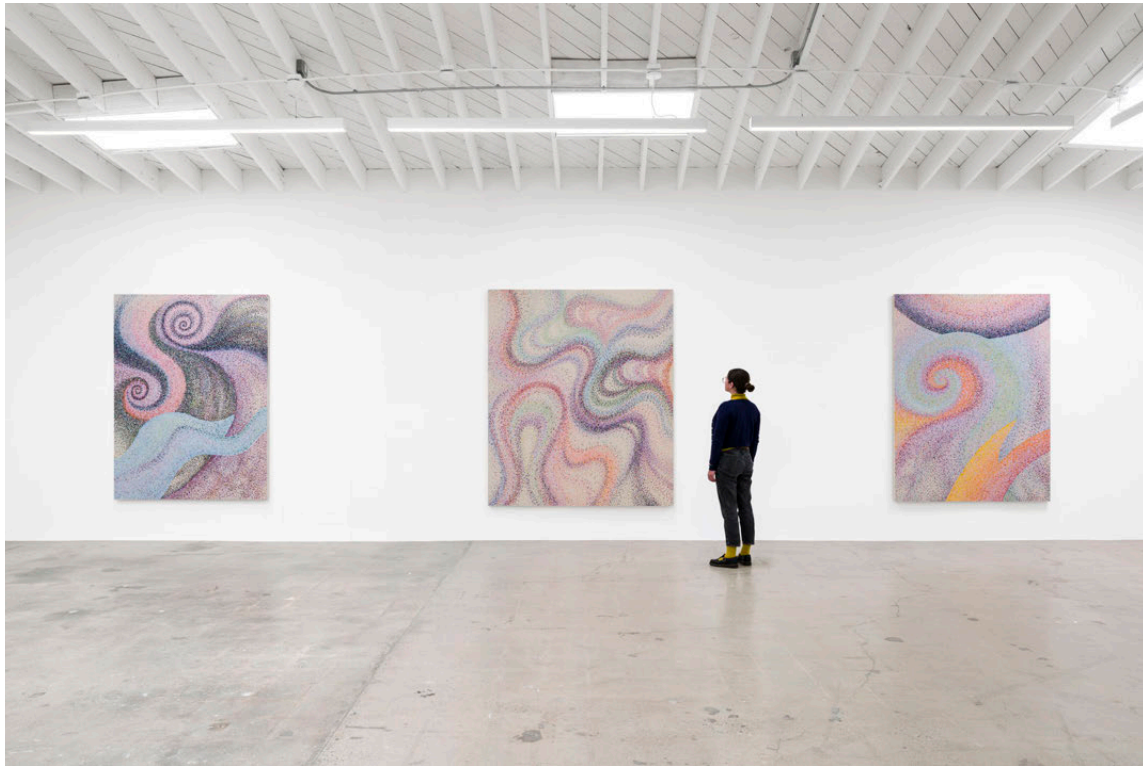
ANAT EBGİ



ANAT EBGI



ANAT EBGİ





Gwen O'Neil

Wild Mountain Thyme, 2023

Acrylic on canvas

79" x 104" [HxW] (200.66 x 264.16 cm)

#GO1014

ANAT EBGI



Gwen O'Neil

The Dancers, 2023

Acrylic on canvas

84" x 72" [HxW] (213.36 x 182.88 cm)

#GO1017



Gwen O'Neil

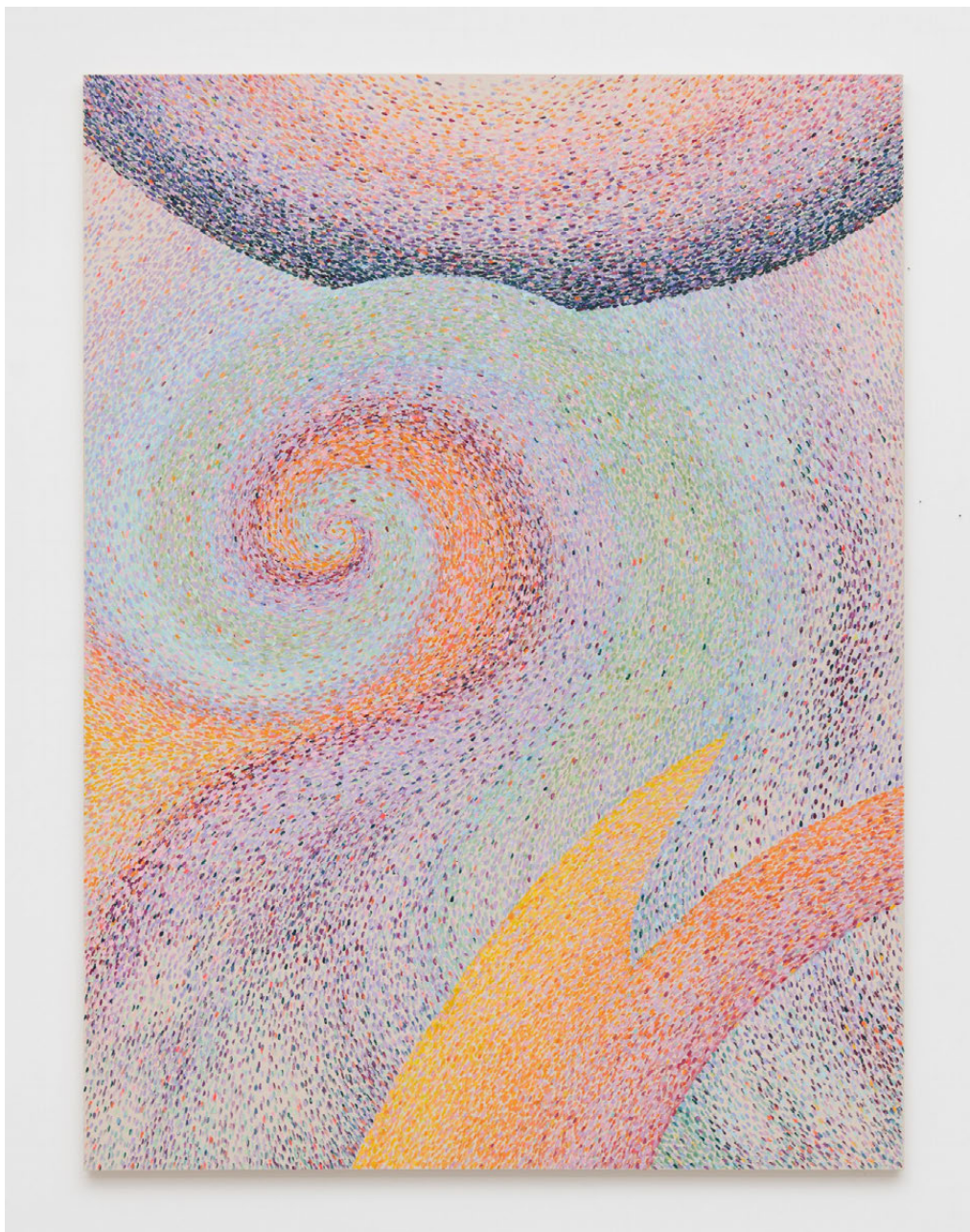
Starlings Night, 2023

Acrylic on canvas

60" x 90" [HxW] (152.4 x 228.6 cm)

#GO1015

ANAT EBGİ



Gwen O'Neil

The Summer Wind, 2023

Acrylic on canvas

80" x 60" [HxW] (203.2 x 152.4 cm)

#GO1018



Gwen O'Neil

Last of the Santa Anas, 2023

Acrylic on canvas

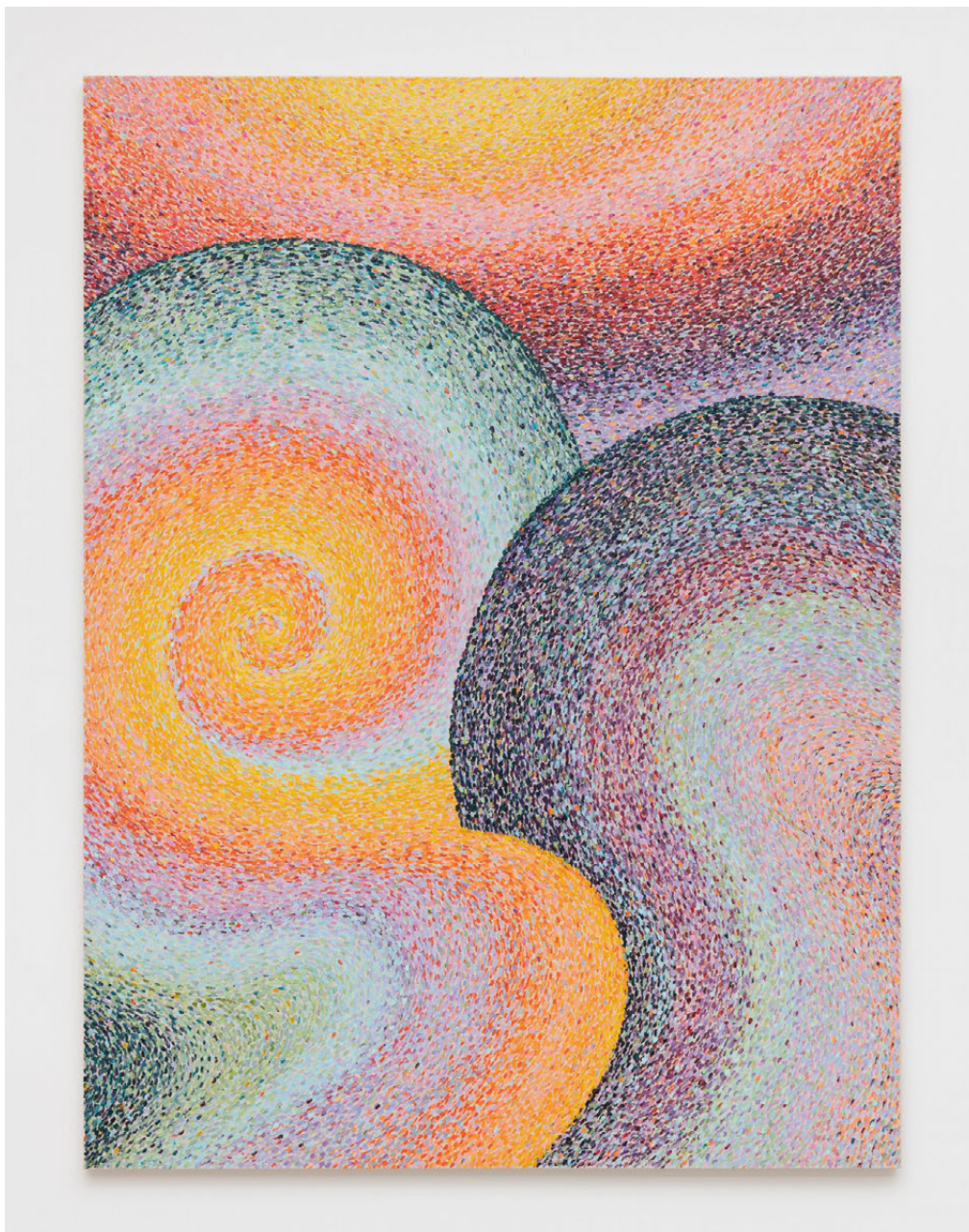
80" x 60" [HxW] (203.2 x 152.4 cm)

#GO1016



Gwen O'Neil *Last of the Santa Anas*, 2023 (Detail)

ANAT EBGİ



Gwen O'Neil

Lemon Glow, 2023

Acrylic on canvas

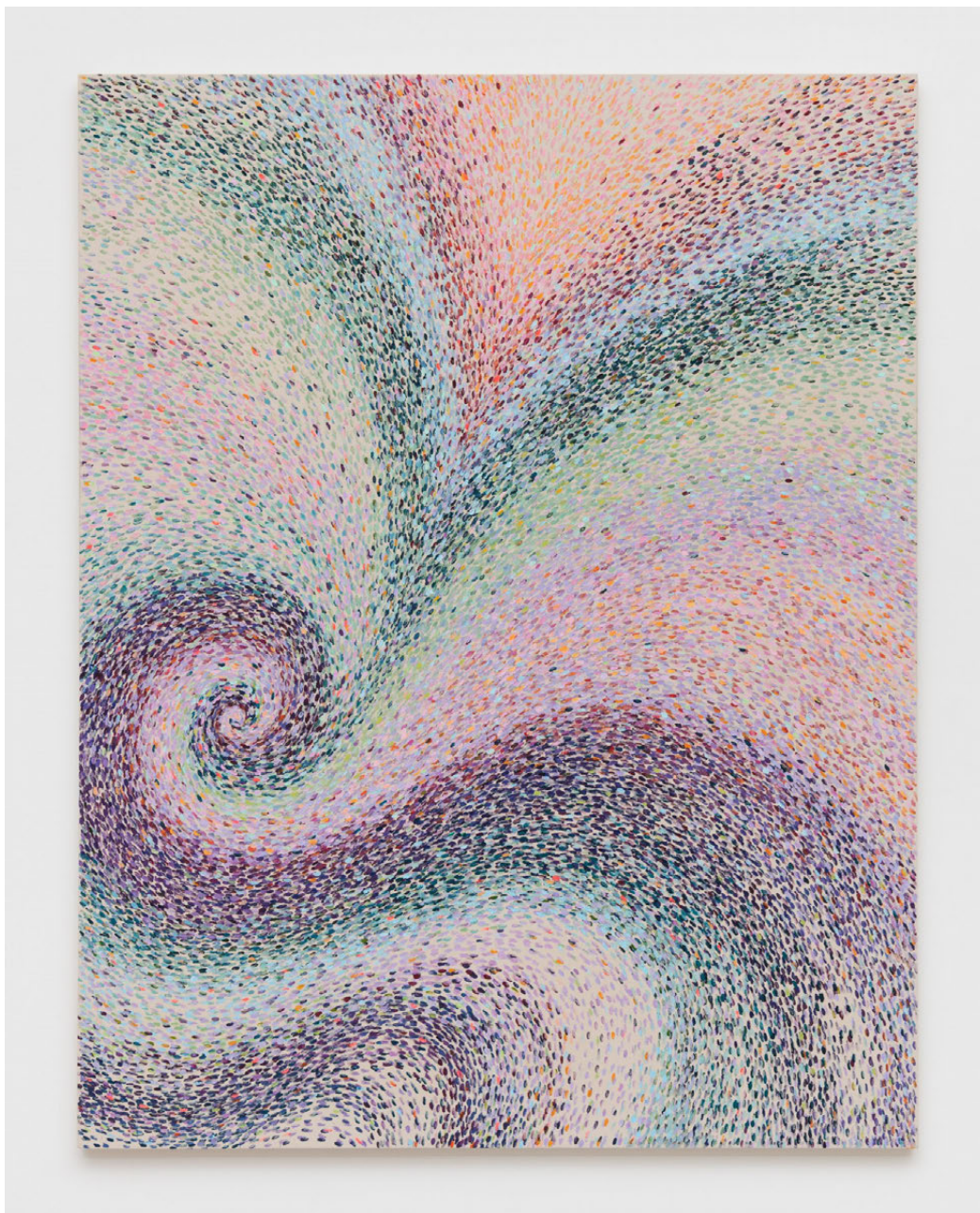
80" x 60" [HxW] (203.2 x 152.4 cm)

#GO1013



Gwen O'Neil *Lemon Glow*, 2023 (Detail)

ANAT EBGİ



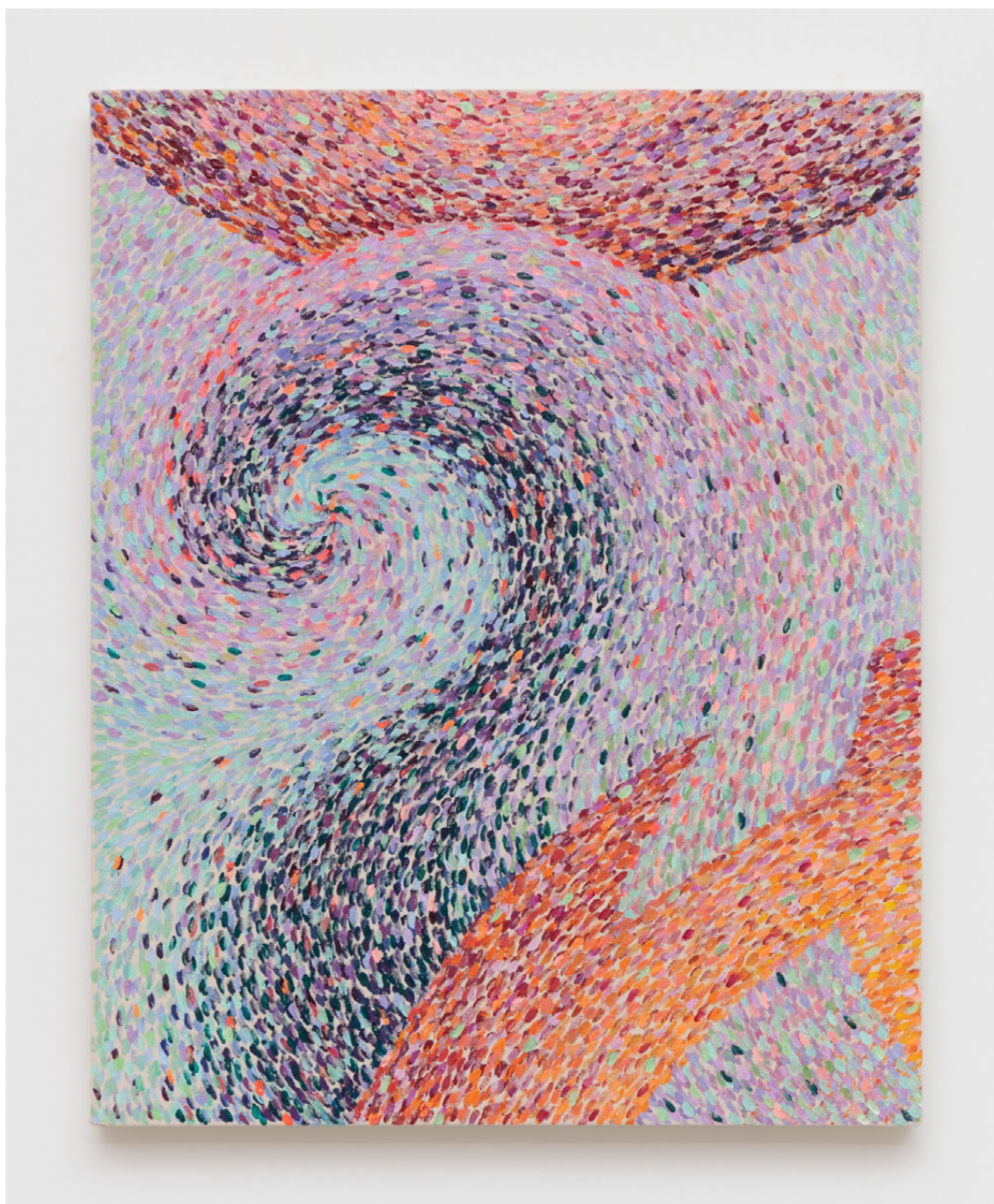
Gwen O'Neil

Waiting For The Sun, 2023

Acrylic on canvas

64" x 50" [HxW] (162.56 x 127 cm)

#GO1022



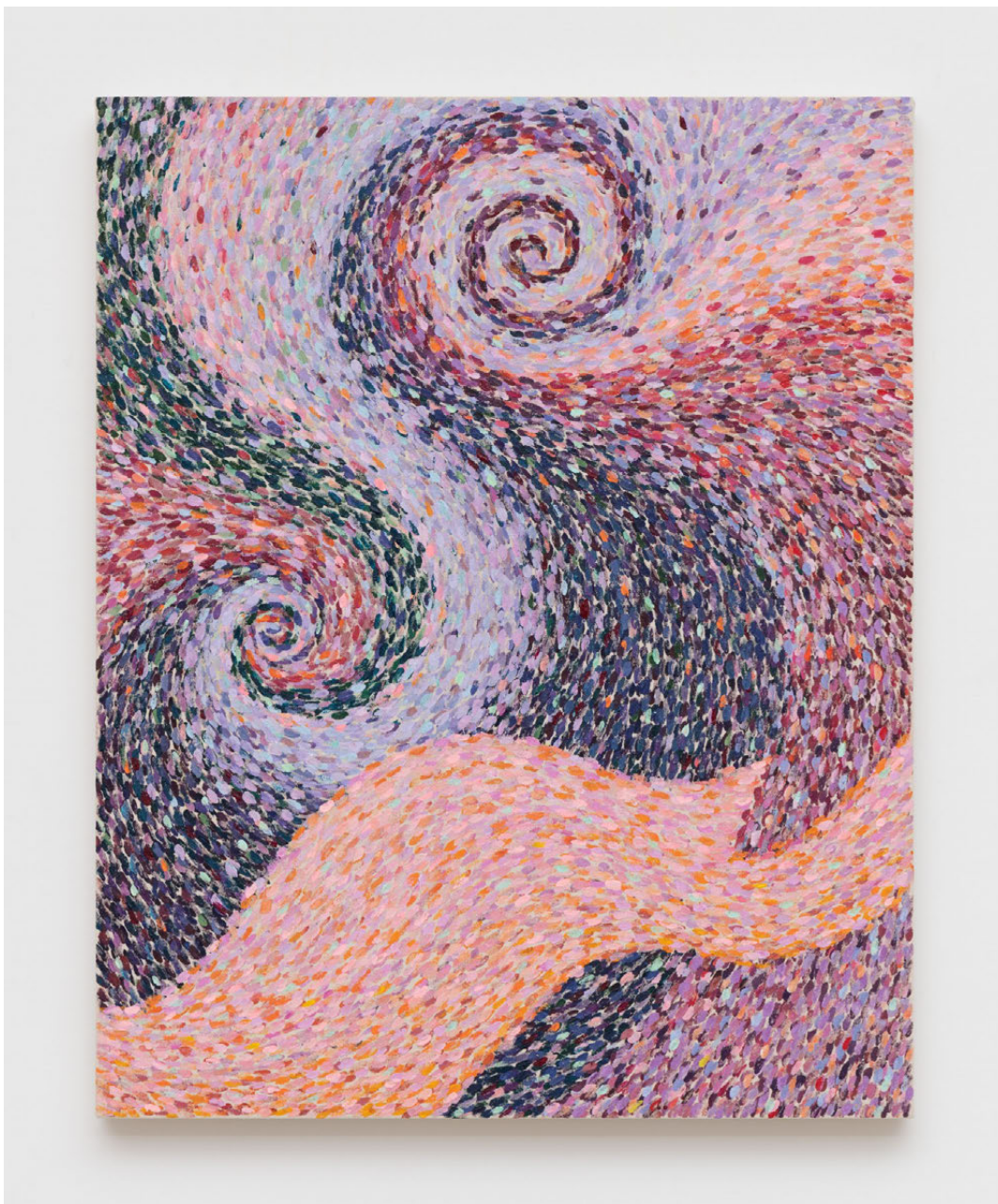
Gwen O'Neil

Mysterious Air, 2023

Acrylic on canvas

30" x 24" [HxW] (76.2 x 60.96 cm)

#GO1019



Gwen O'Neil

Red Winds, 2023

Acrylic on canvas

30" x 24" [HxW] (76.2 x 60.96 cm)

#GO1020



Gwen O'Neil *Red Winds*, 2023 (Detail)

ANAT EBGİ



Gwen O'Neil

Day is Done, 2023

Acrylic on canvas

30" x 24" [HxW] (76.2 x 60.96 cm)

#GO1021



ANAT EBGI

6150 Wilshire Blvd
Los Angeles, CA 90048
+1 (310) 272 3418
www.anatebgi.com

4859 Fountain Ave
Los Angeles, CA, 90029
+1 (323) 407 6806
www.anatebgi.com