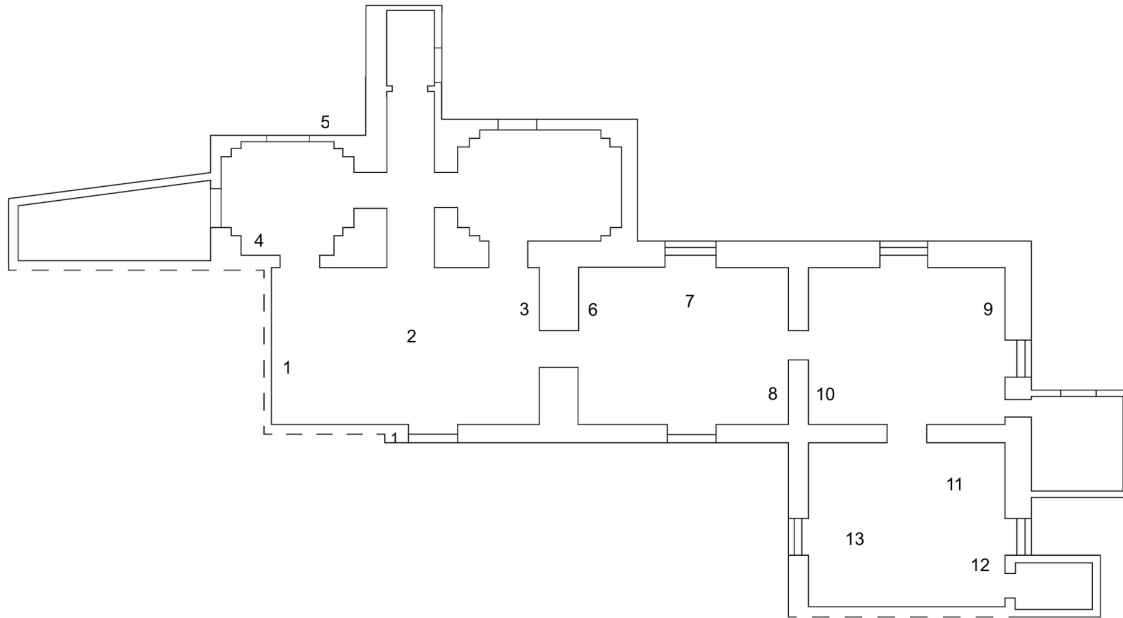


K.R.M. Mooney

radial

April 16 - June 15, 2023



1.

Deposition c. (ix), 2023

Electroplated steel, silver, cuttlebone, aluminum
27 x 6.5 x 5 cm (10.5 x 2.5 x 2 inches)

2.

c. i. (april 11), 2023

Bronze, scagliola alabaster, polyethylene
54 x 40 x 18 cm (21.3 x 15.7 x 7 inches)

3.

Deposition c. (vi), 2023

Electroplated steel, silver, cuttlebone, aluminum
27 x 6.5 x 5 cm (10.5 x 2.5 x 2 inches)

4.

K.R.M. Mooney

Winona Sloane Odette

Untitled (c. ii salento), 2023

Bronze, sap, wax

36 x 10 x 6 cm (14 x 4 x 2.5 inches)

5.

K.R.M. Mooney

Winona Sloane Odette

Untitled (c. i salento), 2023

Bronze, sap, wax

42 x 24 x 7 cm (16.5 x 9.5 x 2.8 inches)

6.

Deposition c. (vii), 2023

Electroplated steel, silver, gold solder, cuttlebone, aluminum
27 x 6.5 x 5 cm (10.5 x 2.5 x 2 inches)

7.

c. ii, (april 11), 2023

Bronze, scagliola alabaster, polyethylene
50 x 40 x 16 cm (20 x 15.7 x 6 inches)

8.

Deposition c. (v), 2022

Electroplated steel, silver, bronze grain, cuttlebone, aluminum
27 x 6.5 x 5 cm (10.5 x 2.5 x 2 inches)

9.

Deposition c. (viii), 2023

Electroplated steel, silver, cuttlebone, aluminum
27 x 6.5 x 5 cm (10.5 x 2.5 x 2 inches)

10.

Deposition c. (x), 2023

Electroplated steel, gold solder, cuttlebone, aluminum
27 x 6.5 x 5 cm (10.5 x 2.5 x 2 inches)

11.

Radial (i), 2021

Rotary motor, glass, water, steel, cast silver, grounding wire
43 x 130 x 13 cm (17 x 51 x 5 inches)

12.

Eosin c. (audit i), 2023

Framed inkjet print on thermal paper
Edition of 4
40.5 x 15 x 2 cm (16 x 6 x .08 inches)

13.

Radial (ii), 2023

Rotary motor, glass, water, steel, cast silver, grounding wire
50 x 148 x 18.5 cm (20 x 58 x 7.3 inches) (dimensions variable)