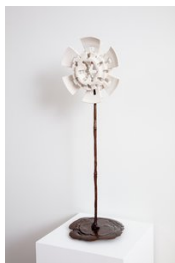


# MAKE ROOM



## **Yassi Mazandi**

*Flower 1, 2023*

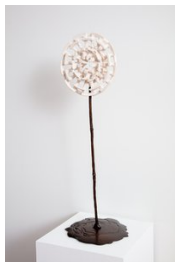
English porcelain (unique flower), powder coated steel (support), and lost wax bronze (unique stand)

10½ x 10½ in.

26.67 x 26.67 cm

YMA.23.18

Base: 25.5 x 10 x 10 in



## **Yassi Mazandi**

*Flower 2, 2023*

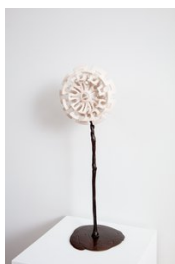
English porcelain (unique flower), powder coated steel (support), and lost wax bronze (unique stand)

9½ x 9½ x 3 in.

24.13 x 24.13 x 7.62 cm

YMA.23.19

Base: 17 x 8 x 7.5 in



## **Yassi Mazandi**

*Flower 3, 2023*

English porcelain (unique flower), powder coated steel (support), and lost wax bronze (unique stand)

8½ x 8½ x 3 in. (framed)

21.59 x 21.59 x 7.62 cm (framed)

YMA.23.20

Base: 25 x 8 x 7 in



## **Yassi Mazandi**

*Flower 4, 2023*

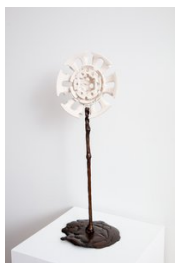
English porcelain (unique flower), powder coated steel (support), and lost wax bronze (unique stand)

8 x 8 x 3½ in.

20.32 x 20.32 x 8.89 cm

YMA.23.21

Base: 18 x 8 x 8.5 in



## **Yassi Mazandi**

*Flower 5, 2023*

English porcelain (unique flower), powder coated steel (support), and lost wax bronze (unique stand)

8½ x 8½ x 2 in.

21.59 x 21.59 x 5.08 cm

YMA.23.22

Base: 25.5 x 12 x 11 in



**Yassi Mazandi**

*Lockdown Experiment 1, 2020*

4¾ x 3½ in.

12.06 x 8.89 cm

YMA.23.16



**Yassi Mazandi**

*Lockdown Experiment 2, 2020*

4¾ x 3½ in.

12.06 x 8.89 cm

YMA.23.15



**Yassi Mazandi**

*Lockdown Experiment 3, 2020*

4¾ x 3½ in.

12.06 x 8.89 cm

YMA.23.14



**Yassi Mazandi**

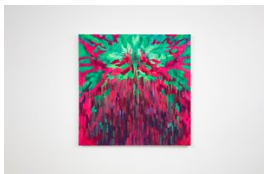
*Burgundy Dreams, 2023*

acrylic, flashe, nova paint, ink, pencil, house paint, and crayon on canvas

18 x 18 in.

45.72 x 45.72 cm

YMA.23.07



**Yassi Mazandi**

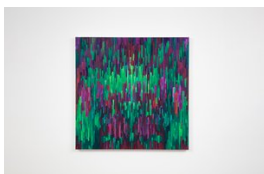
*Pansy, 2023*

acrylic, flashe, nova paint, ink, pencil, house paint, and crayon on canvas

18 x 18 in.

45.72 x 45.72 cm

YMA.23.06



**Yassi Mazandi**

*Green Orchid, 2023*

acrylic, flashe, nova paint, ink, pencil, house paint, and crayon on canvas

40 x 40 in.

101.60 x 101.60 cm

YMA.23.05



**Yassi Mazandi**

*Warp*, 2023

acrylic, flashe, nova paint, ink, pencil, house paint, and crayon on canvas

40 x 40 in.

101.60 x 101.60 cm

YMA.23.04



**Yassi Mazandi**

*Dive*, 2023

acrylic, flashe, nova paint, ink, pencil, house paint, and crayon on canvas

72 x 60 in.

182.88 x 152.40 cm

YMA.23.03



**Yassi Mazandi**

*Iris*, 2023

acrylic, flashe, nova paint, ink, pencil, house paint, and crayon on canvas

72 x 60 in.

177.80 x 157.48 cm

YMA.23.01



**Yassi Mazandi**

*Yellow Bliss germ*, 2014

Mixed media on handmade Japanese mulberry paper

22 x 17 in

823



**Yassi Mazandi**

*Loose Pink Target*, 2014

Mixed media on handmade Japanese mulberry paper

22 x 17 in

825



**Yassi Mazandi**

*Untitled*, 2014

Mixed media on handmade Japanese mulberry paper

22 x 17 in

821



**Yassi Mazandi**

*Untitled (pointed 8), 2015*

Mixed media on handmade Japanese mulberry paper

22 x 17 in

822



**Yassi Mazandi**

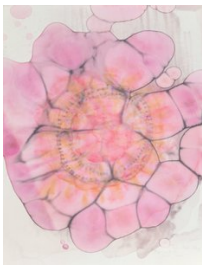
*Lilac Experiment , 2015*

Pigment on handmade Japanese mulberry paper

22 x 17 in.

55.88 x 43.18 cm

YMA.23.12



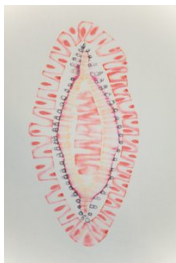
**Yassi Mazandi**

*Untitled (Germs on Sheets Series, Experiment II), 2014*

Mixed media on handmade Japanese mulberry paper

22 x 17 in

824



**Yassi Mazandi**

*Sea cucumber germ, 2014*

Mixed media on handmade Japanese mulberry paper

22 x 17 in

820



**Yassi Mazandi**

*The other sea Cucumber germ, 2014*

Mixed media on handmade Japanese mulberry paper 22 x 17 in

829