

Image Credits

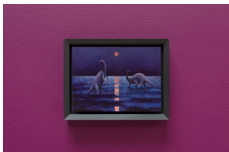
All Images: Courtesy of the Artist and The Modern Institute/Toby Webster Ltd, Glasgow.

01-12.

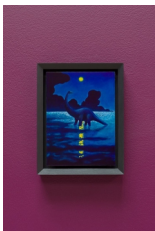
Installation view, Nicolas Party, 'Cretaceous', The Modern Institute, Aird's Lane, Glasgow, 2023
Photo: Patrick Jameson



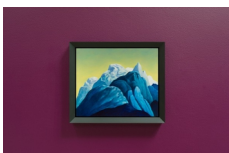
13.
Nicolas Party
Red Forest, 2022
Oil on copper
20 x 15 cm, 7 7/8 x 5 15/16 in framed
Photo: Patrick Jameson



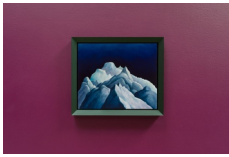
14.
Nicolas Party
Dinosaur, 2023
Oil on copper
14 x 18.1 x 3.5 cm, 5 1/2 x 7 1/8 x 1 3/8 in
Photo: Patrick Jameson



15.
Nicolas Party
Dinosaur, 2023
Oil on copper
18.1 x 14 x 3.5 cm, 7 1/8 x 5 1/2 x 1 3/8 in
Photo: Patrick Jameson



16.
Nicolas Party
Mountains, 2023
Oil on copper
29.8 x 34.9 x 3.5 cm, 11 3/4 x 13 3/4 x 1 3/8 in
Photo: Patrick Jameson



17.

Nicolas Party

Mountains, 2023

Oil on copper

29.8 x 34.9 x 3.5 cm, 11 3/4 x 13 3/4 x 1 3/8 in

Photo: Patrick Jameson



18.

Nicolas Party

Baby, 2023

Oil on copper

34.9 x 27 x 3.5 cm, 13 3/4 x 10 5/8 x 1 3/8 in

Photo: Patrick Jameson



19.

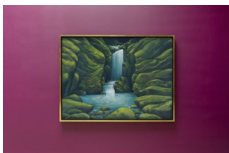
Nicolas Party

Red Forest, 2023

Soft pastel on pastel card

68.3 x 52.4 x 3.8 cm, 26 7/8 x 20 5/8 x 1 1/2 in

Photo: Patrick Jameson



20.

Nicolas Party

Waterfall, 2023

Soft pastel on linen

156.5 x 206.7 x 9.8 cm, 61 5/8 x 81 3/8 x 3 7/8 in

Photo: Patrick Jameson



21.

Nicolas Party

Red Forest, 2023

Soft pastel on linen

181 x 115.9 x 9.8 cm, 71 1/4 x 45 5/8 x 3 7/8 in

Photo: Patrick Jameson



22.

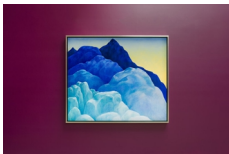
Nicolas Party

Waterfall, 2023

Soft pastel on linen

274.3 x 189.5 x 10.8 cm, 108 x 74 5/8 x 4 1/4 in

Photo: Patrick Jameson



23.

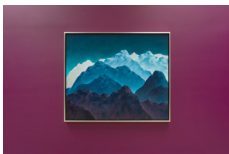
Nicolas Party

Mountains, 2023

Soft pastel on linen

160.5 x 192.6 x 9 cm, 63 3/16 x 75 13/16 x 3 9/16 in

Photo: Patrick Jameson



24.

Nicolas Party

Mountains, 2023

Soft pastel on linen

160.5 x 192.6 x 9 cm, 63 3/16 x 75 13/16 x 3 9/16 in

Photo: Patrick Jameson