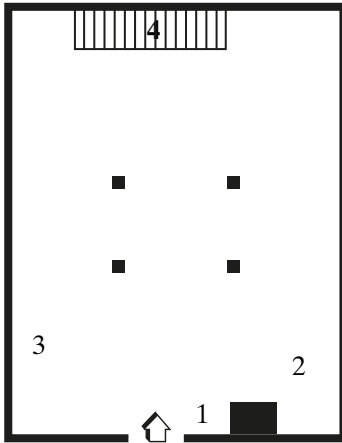


HOUSING

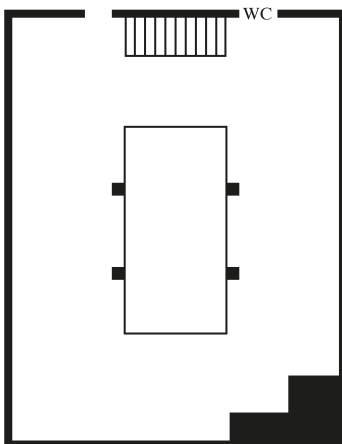
a case study by REMCO TORENBOSCH
22.04 – 18.06.2023

FLOORPLAN

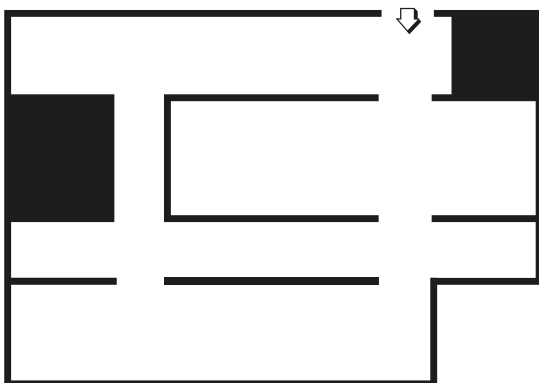
GROUND FLOOR



FIRST FLOOR



BASEMENT



1. PARK MCARTHUR

Carried and Held, 2013-ongoing
Digital print on museum board
20,32 cm x 101,6 cm

2. CAROLYN LAZARD

A Recipe for Disaster, 2018
HD Video, 27 minutes

3. NEW INSTITUTE

Document AFFV422 - *Houses are for living in... not to trade with*, 1985
Document AFFV1440 - *Talking and lying about housing shortage*, 1990
Document FFV1434 - *We just want affordable housing!*, 1985
Document MAQV1175 - *Renovating Kiefhoek, Workers' Housing Kiefhoek*, 1977

4. BIK VAN DER POL

a half mile of string, 2023
Rope

5. GHISLAINE LEUNG

Browns, 2021
Score: All available walls in brown to standard picture hanging height

6. IMA-ABASI OKON

M - C - M [See back], 2019 - 2023
Metal grid, (without) 465 white ceiling tiles, (without) morphine, (without) insulin, (without) ultrasonic gel and (without) gold
Dimensions variable

The regulations on accessibility in the Building Code do not guarantee that a building or public space can actually be used safely by disabled people. In consultation with the participants, it was therefore decided to make the exhibition and the public program of HOUSING completely wheelchair-friendly. This means that during the entire exhibition period of HOUSING, all spaces that are not accessible by wheelchair will be closed to the public.*



*The Dutch Building Code is a collection of technical and other regulations that apply to the building of a structure, the condition of an existing structure and the putting into use or use of a structure, for example for homes, offices, stores and hospitals.

