

WINTER STREET GALLERY

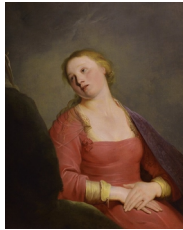
Widow's Walk

Curated by Charlap Hyman & Herrero

Carmen Almon, Carlo Bugatti, Alphonse Cytère, Leonor Fini, Pieter de Grebber, Camille Henrot, Jenny Jesky, Matthew Leifheit, Thad Lovett, Eli Ping, Miroslav Tichý, Andra Ursuța

July 22 – August 27, 2023

Opening reception: Saturday, July 22, 4-7pm



Pieter de Grebber

Mary Magdalene, c. 1630-50

Signed in monogram lower center

Oil on canvas

38 3/4 x 31 1/4 in (98.4 x 79.4 cm)

46 1/4 x 38 1/2 in (117.5 x 97.8 cm) framed



Alphonse Cytère

Unis French Art Nouveau Vase, c. 1914-20

Stamped "Gres De A. Cytère Rambervillers

Vosges" and "Unis France" on underside

Flamed sandstone with metallic glaze

17 1/2 x 9 1/2 in (44.5 x 24.1 cm)



Carlo Bugatti

Black tinted wood sellette with two trays, n.d.

Four-legged base partially covered with copper and pewter inlays

height 41 5/16 in (height 105 cm)



Andra Ursuța

Man From the Internet 71, 2016

Ink on paper in hand cast polyurethane and dirt frame

10 x 14 in (25.4 x 35.6 cm)

17 x 21 in (43.2 x 53.3 cm) framed



Eli Ping

Mote, 2023

Canvas and resin

74 x 7 x 4 in (188 x 17.8 x 10.2 cm)

WINTER STREET GALLERY



Thad Lovett

Untitled (photograph of Jean-Michel Frank), c.
1940
Photograph



Carmen Almon

White Poppy with Blue Mountain Swallowtail,
2023
Copper sheet, brass tubing, steel plate, steel
wire, polymer clay, and flat enamel paint
22 x 13 x 13 in (55.9 x 33 x 33 cm)



Miroslav Tichý

Untitled (No. 7-6-80), n.d.
Gelatin silver print
5 5/16 x 4 1/2 in (13.5 x 11.4 cm)



Miroslav Tichý

Untitled (No. 15-3-42), n.d.
Gelatin silver print
5 1/8 x 3 7/16 in (13 x 8.7 cm)



Miroslav Tichý

Untitled (No. 4-11-19), n.d.
Gelatin silver print, ink and paper
7 3/4 x 6 5/16 in (19.7 x 16 cm)



Camille Henrot

Faciathérapie (Mina Hebbaz)(Series "Sculptures
Massées"), 2011
Signed, numbered, and stamped "CAA 8/8 AC
stamped" on reverse
Bronze
29 1/8 x 14 1/8 x 2 3/4 in (74 x 35.9 x 7 cm)
Edition 8 of 8 + 4 APs

WINTER STREET GALLERY



Leonor Fini

Portrait Of Bachoo Dinshaw, Countess

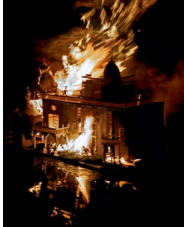
Woronzow, 1946

Signed and dated lower right

Oil on canvas

21 3/4 x 18 1/4 in (55.2 x 46.4 cm)

26 1/2 x 23 1/2 in (67.3 x 59.7 cm) framed



Matthew Leifheit

Belvedere (from the series "To Die Alive"), 2021

Signed and numbered on verso

Dye sublimation print

10 x 8 in (25.4 x 20.3 cm)

11 5/8 x 8 5/8 in (29.5 x 21.9 cm) framed

Edition 1 of 3