

# KING'S LEAP

## Claudia Lemke, John Neff, and Evelyn Plaschg - 'DESIRE'

Courtesy of the artists, Scherben, and King's Leap Fine Arts.

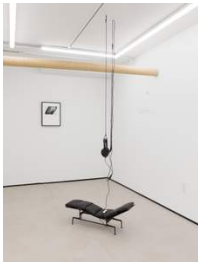
Photography by Stefany Lazar.



**Evelyn Plaschg**  
*Pocket (bright), 2023*  
pigment on paper  
35 x 59 inches  
88.9 x 149.86 cm  
EP0001



**Claudia Lemke**  
*Old Haystack, 2023*  
oil on canvas on wood  
27 x 29 inches  
68.58 x 73.66 cm  
CLE0001



**John Neff**  
*Sleepy Professor, 2023*  
ES-106, Billy Wilder' Chaise 1 to 3 Modell, Headphones,  
Sound: Wind  
32 x 8 x 13 inches, dimensions variable  
81.28 x 20.32 x 33.02 cm, dimensions variable  
JN0001  
In collaboration with Tarik Kentouche



**John Neff**  
*From 101, 2013 - 2020*  
silver gelatin print, frame  
7.75 x 9.75 inches  
19.68 x 24.77 cm  
18.5 x 14.5 inches  
46.99 x 36.83 cm  
JN0002.1



**Evelyn Plaschg**  
*Zipper, 2023*  
oil on canvas  
59.5 x 39 inches  
151.13 x 99.06 cm  
EP0002



**Evelyn Plaschg**  
*Seat, 2023*  
oil on canvas  
54 x 40 inches  
137.16 x 101.6 cm  
EP0003



**Claudia Lemke**  
*Wood for Woods, 2023*  
oil on canvas on panel  
28 x 33 inches  
71.12 x 83.82 cm  
CL0002



**Claudia Lemke**  
*The outside can't get inside, 2023*  
oil on canvas on wood  
14.25 x 19 inches  
36.2 x 48.26 cm  
CL0003



**John Neff**  
*Untitled, 2004*  
digital print, glass  
10 x 7.25 inches  
25.4 x 18.41 cm  
14 x 11 inches  
35.56 x 27.94 cm  
JN0003.1



**John Neff**  
*12/25/10, 2010 - 2013*  
coated archival inkjet print, Epson Exhibition Fiber  
Paper  
10 x 7.25 inches  
25.4 x 18.41 cm  
14 x 11 inches  
35.56 x 27.94 cm  
JN0004.1



**John Neff**

4/18/11, 2010 - 2013

coated archival inkjet print, Epson Exhibition Fiber Paper

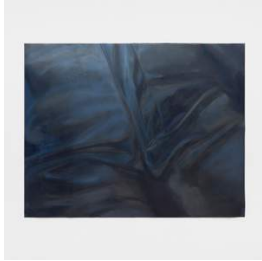
10 x 7.25 inches

25.4 x 18.41 cm

14 x 11 inches

35.56 x 27.94 cm

JN0005.1



**Evelyn Plaschg**

*Crotch II*, 2023

oil on coated paper

39 x 50 inches

99.06 x 127 cm

EP0004



**Claudia Lemke**

*Collapse of Desire*, 2023

oil on canvas on wood

31.25 x 34 inches

79.38 x 86.36 cm

CL0004



**John Neff**

*Dan Ferro Testing a Scanner (Negative and Exposure Glass)*, 2007

acetate, toner, and tape on glass with rolls of tape

54.5 x 40.5 inches

138.43 x 102.87 cm

JN0006