

# SOMEDAY

## THE INVENTION OF NATURE

Peter Brock  
Rachelle Dang  
Brittni Ann Harvey  
Dmitri Hertz  
Brandon Ndife  
Umico Niwa  
Estefania Puerta  
Matthew Schrader  
Timmy Simonds

July 8 - August 19, 2023

Nino Mier Glassell Park  
2700 W Ave 34  
Los Angeles, CA 90065





**THE INVENTION OF NATURE**

Nino Mier Gallery, Glassell Park

2700 W Ave 34, Los Angeles, CA 90065

July 8 - August 18, 2023 | Gallery Hours: Wed - Sat, 12 - 6PM

Someday is happy to announce "The Invention of Nature," at Nino Mier Gallery, Glassell Park, featuring work by Peter Brock, Rachele Dang, Brittani Ann Harvey, Dmitri Hertz, Brandon Ndife, Umico Niwa, Estefania Puerta, Matthew Schrader and Timmy Simonds, on view from July 8 - August 19, 2023.

The very concept of nature implies a distinction between our species and the rest of the physical environment. This sense of separation arises from the semantic conventions of Western language and its colonial lineage, rather than empirical study. The imaginary division between humans and their surroundings has reverberated throughout our cultural discourse, and the increasing omnipresence of technology heightens this tendency. Depictions of the so-called "natural world" reveal as much about the socio-political conditions of their authors as they do about the flora and fauna they portray. As a genre, landscape projects our desires and fears as much as it observes our surroundings. Today, most computers, phones, and tablets arrive with scenes of pastoral beauty as their default background. Chosen for their calming effects, images of pristine beaches, snow capped mountains and celestial bodies soothe screen-induced anxiety. When overconsumption threatens the survival of our civilizations, the iconography of nature also provides a set of symbols to reflect upon our dilemma.

Instead of fetishizing the supposed purity of the non-human realm, the artists in this exhibition engage with the precarious interdependence of biological and technological systems as a core feature of our existence. Through idiosyncratic material vocabularies, they reference organic processes in unexpected ways. Often, it becomes impossible to distinguish growth from decay, or found objects from those fabricated in the studio. Some elements resemble the slow accumulation of geologic time, others the rapid bloom of fungal growth. Even two-dimensional images show signs of erosion. Plastic and plant matter mingle together to form hybrid entities that are at once charming and haunting. Echoes emerge between the patterns of plants and the rhythmic shapes of infrastructure, interconnected by invisible ligaments, like the mass branching of mycelium hyphae. Heavy sculptures of stone and wood mimic the eccentric shapes of nanoparticles. The horizon is reimagined as a material boundary; a physical limitation that orients our hopes and fears about the future. These works avoid the pervasive dualism of language by directly addressing our senses. Their peculiar forms and references ask us to simultaneously consider the dependencies and contradictions that shape our relationship to this planet.

Organized by Peter Brock.

The title of this show comes from Andrea Wolf's book, *The Invention of Nature: Alexander von Humboldt's New World* (Knopf, 2015).





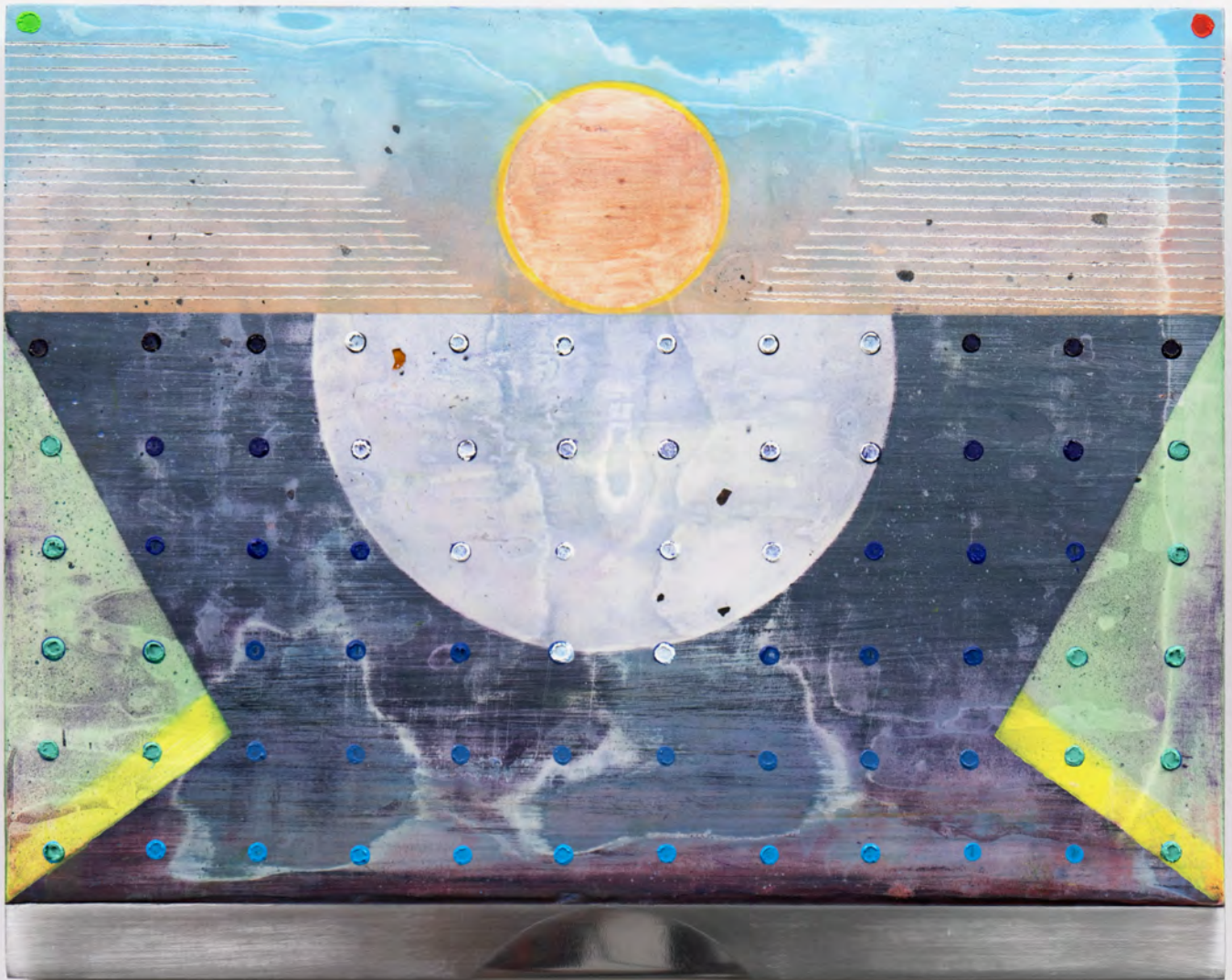












Peter Brock  
The Limited Sphere,  
Oil, aqua-resin on aluminum  
9 x 12 inches













Umico Niwa

Baby Shoe Series: Phantom Home, 2023

Foraged materials, horse hair, wax, copper

5.1 x 11 x 13" (13 x 28 x 33cm)







**TIMMY SIMONDS**  
teachers bouquet transient  
July 2 , 2023  
Bleached parsley, oil paint,  
glycerin, cellophane, plastic  
14 x 12 x 18 inches





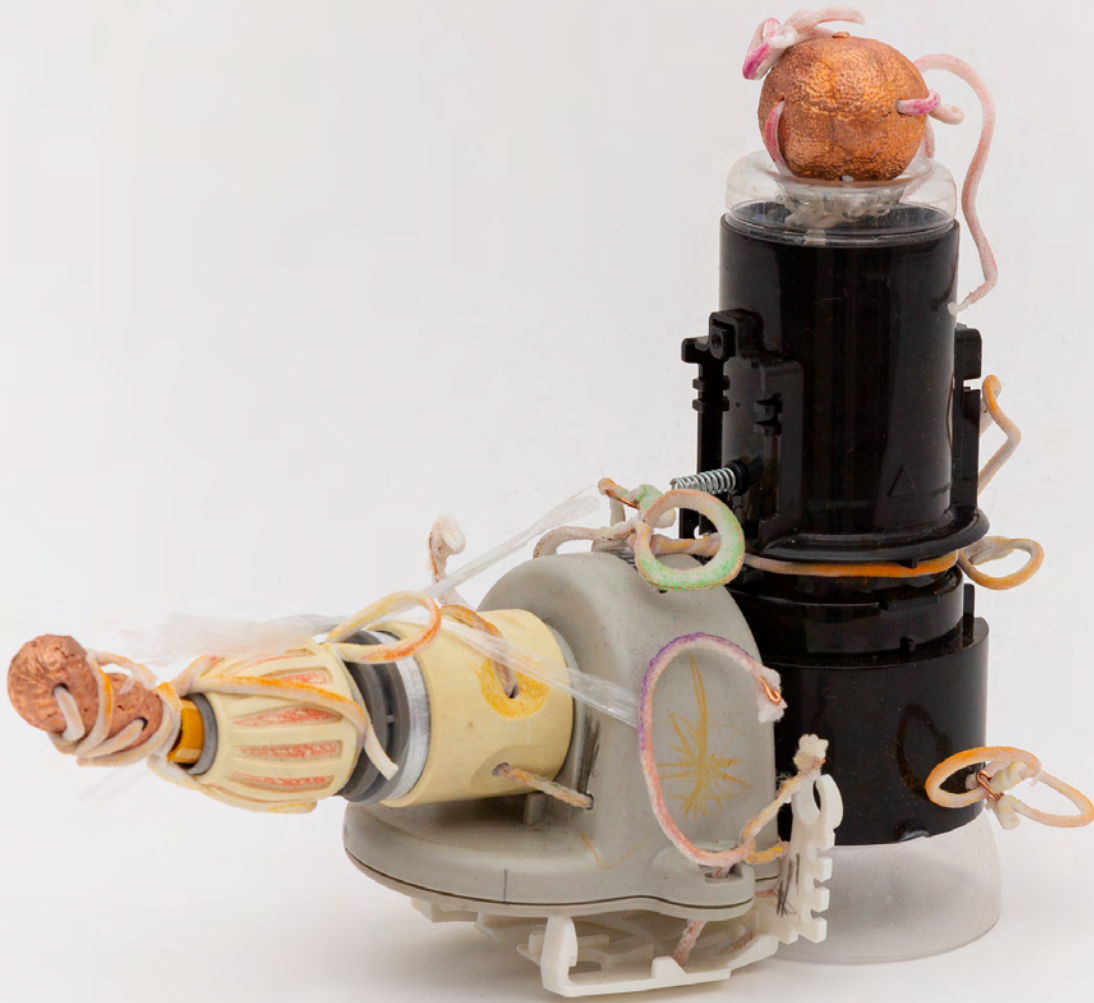
**TIMMY SIMONDS**

**teachers bouquet: you see right through me, teacher says, 2023**

**Bleached parsley, oil paint, glycerin, florists cellophane, aluminum  
22 x 30 x 18 inches**



Umico Niwa  
Baby Shoe Series: Phantom Home, 2023  
Foraged materials, horse hair, wax, copper  
5.1 x 11 x 13 inches





**TIMMY SIMONDS**

teachers bouquet transient, July 1 , 2023

Bleached parsley, oil paint, glycerin, florist cellophane, plastic

10 x 18 x 20 inches









ESTEFANIA PUERTA

Bouquet, 2023

aluminum, porcelain, shag rug, pigment, coffee, soap, essential oil,  
aluminum leaf, rocks, resin, canvas, acrylic, plasticine, bristles, birch  
34 x 24 x 26 inches























BRITTNI ANN  
HARVEY  
Untitled, 2023  
Jacquard-woven  
fabric  
92 x 54 inches





**MATTHEW SCHRADER**  
Limb, 2023  
Wood and steel (brand  
and electrical conduit)  
24 x 2 x 2 inches









RACHELLE DANG  
Diver VI, 2023  
glazed ceramic, hardware  
20 x 18 x 8 inches













ESTEFANIA PUERTA

Ombligo, 2023

Bristles, wood, aluminum leaf, resin,  
essential oil, flower, canvas, acrylic  
24 x 8.5 x 7 inches









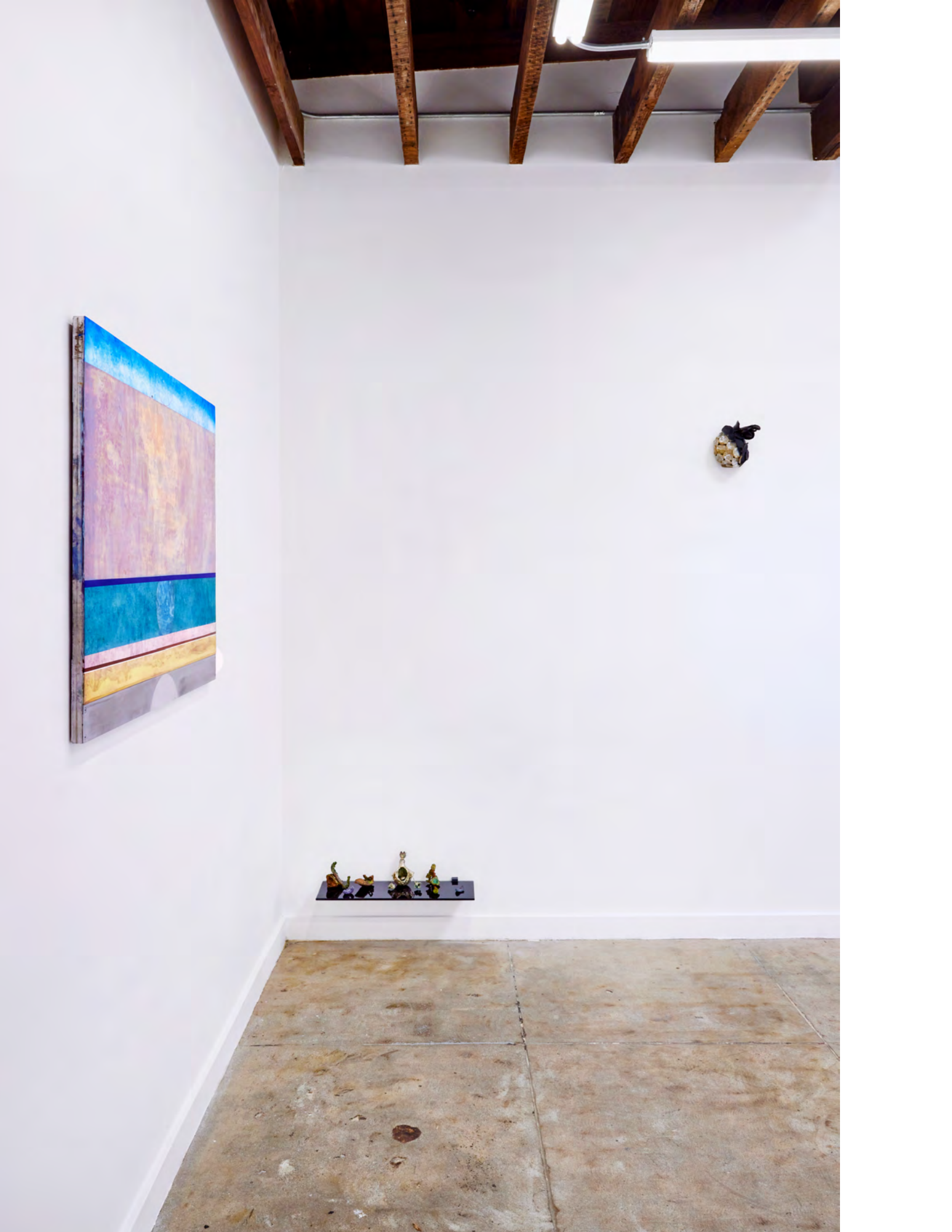


PETER BROCK  
The Limited Sphere, 2023  
oil and aqua-resin on aluminum panel  
30 x 40 inches













UMICO NIWA

Installation: Baby Shoe Series, 2020 -23

Britannia pewter, copper, enamel, foraged organic materials

Dimensions variable



UMICO NIWA  
Baby Shoes Series: Easy Rust, 2021  
Britannia pewter, copper, enamel,  
foraged organic materials  
4.5 x 5 x 3 inches





UMICO NIWA

Installation: Baby Shoe Series, 2020 -23

Britannia pewter, copper, enamel, foraged organic  
materials Dimensions variable



UMICO NIWA

Baby Shoes Series: the first heel, 2021

Britannia pewter, copper, enamel, foraged organic materials

3.5 × 5.5 × 2.5 inches







DMITRI HERTZ  
Shelled Amoeba, 2023  
7.5 x 6.5 x 3.5 inches  
Glazed ceramic









**BRANDON NDIFE**

**Rinse Cycle, 2022**

Cast insulation foam, aqua-resin, resin,  
soil, glue wood, enamel paint, oil paint,  
ceramic plates, forks, various hardware  
42 x 20 x 95 inches







DMITRI HERTZ

Balanced Amoeba (shelled amoeba, strand, truncated octahedron), 2023

Glazed ceramic, steel, patina, wax, and concrete

50 x 15 x 11 inches







Installation view: Matthew Schrader  
C-prints, museum board, wood, plexiglass  
Each unique





MATTHEW SCHRADER

Ailanthus (night), 2023

C-print, ink, museum board, wood, plexiglass  
11 x 9 x 1.25 inches

Unique



MATTHEW SCHRADER

Union Avenue, 2023

C-print, ink, museum board, wood, plexiglass

11 x 9 x 1.25 inches

Unique





MATTHEW SCHRADER  
The City is a Tree, 2023  
C-print, ink, museum board, wood and plexiglass  
9 x 14.25 x 1.25 inches  
Unique



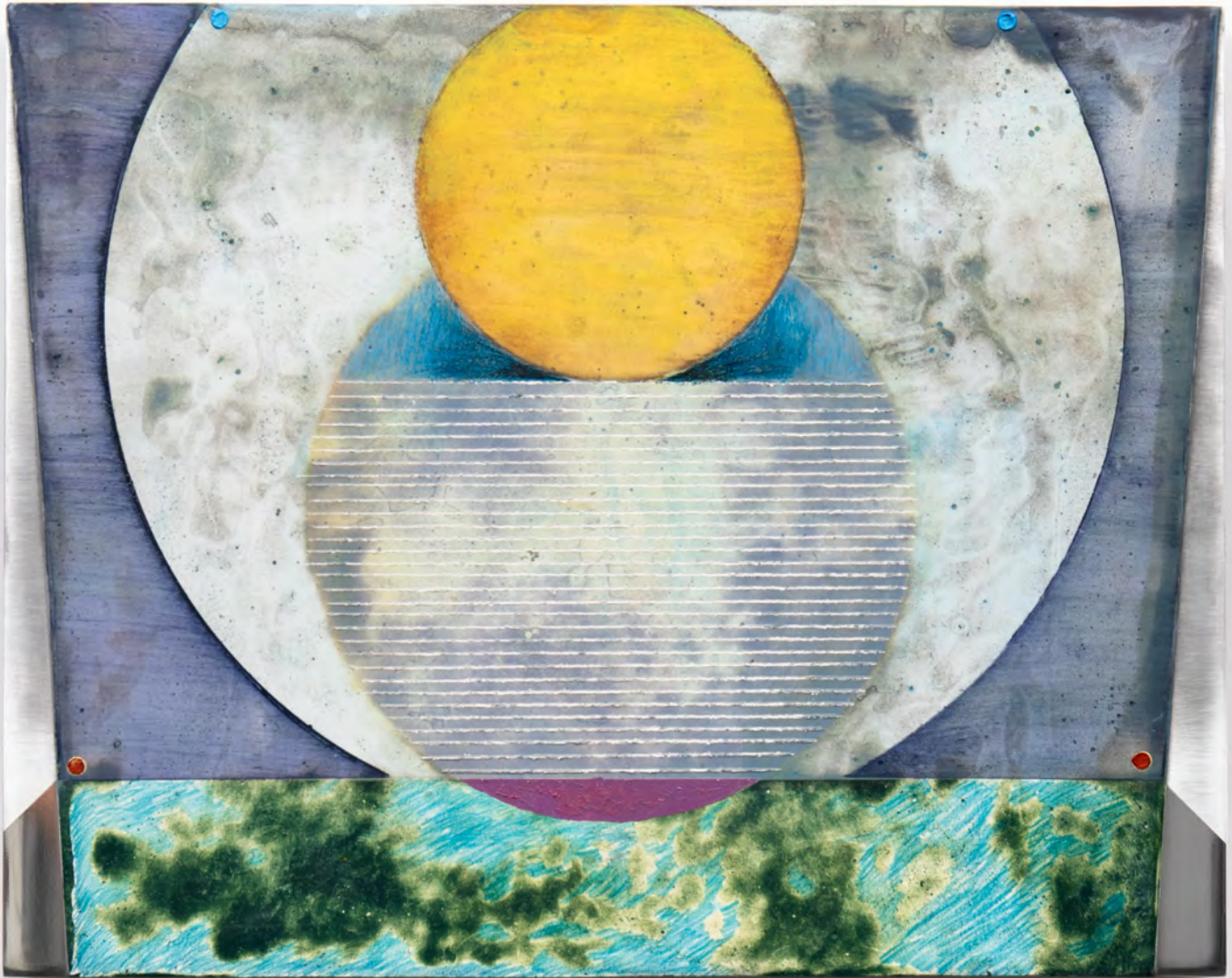




PETER BROCK  
The Limited Sphere, 2023  
Oil and aqua-resin on aluminum panel  
18 x 24 inches

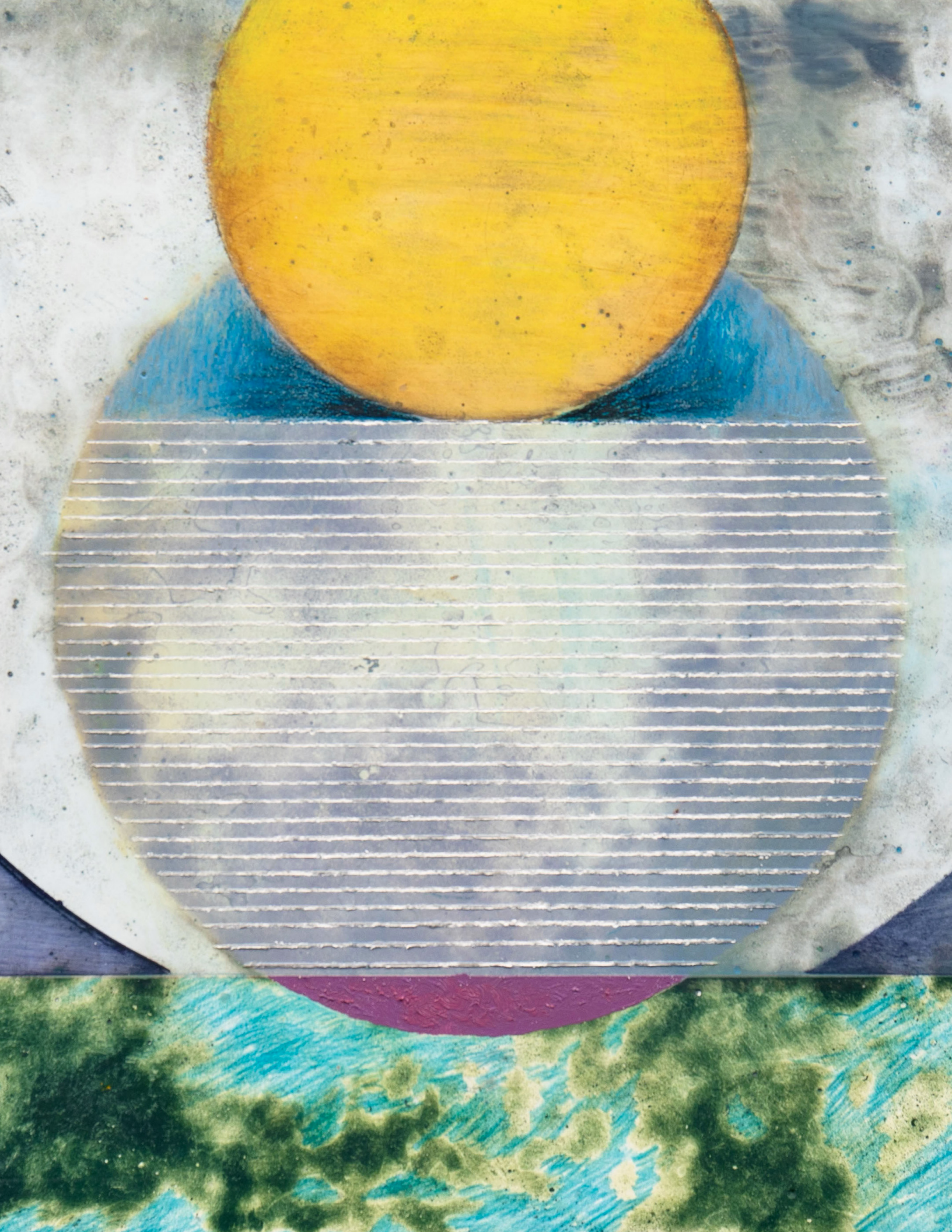






PETER BROCK  
The Limited Sphere, 2023  
oil, acqua-resin on aluminum panel  
9 x 12 inches









UMICO NIWA  
Daphne Adorned Series, 2023  
Pewter, forge organic materials  
11.5 x 6 x 4 inches