

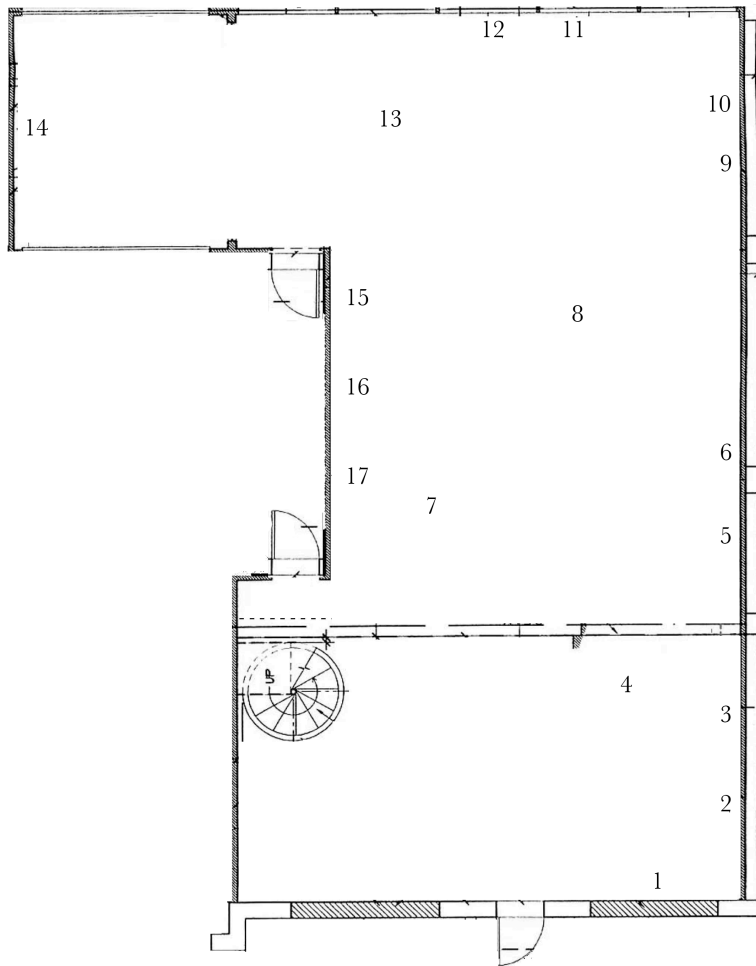
*I am a bird girl now
I've got my heart
Here in my hands now
I've been searching
For my wings some time
I'm gonna be born
Into soon the sky
'Cause I'm a bird girl
And the bird girls go to heaven
I'm a bird girl
And the bird girls can fly
Bird girls can fly*

WHITE FLAG PROJECTS

Bard Girls Can Fly

January 18 – March 8, 2014

Michael Dean
Sanya Kantarovsky
Robert Longo
Amelie von Wulffen
Camilla Wills
Phillip Zach



- 1- Phillip Zach, *Where is Love? (Does it fall from skies above?)*, 2013
Foam, UV direct print, 31.5 x 49.2 x 1.77 inches
 - 2- Phillip Zach, *Berries*, 2013
Foam, UV direct print, 29.5 x 21.65 x 1.77 inches
 - 3- Phillip Zach, *Curiosity*, 2013
Foam, UV direct print, 63 x 21.65 x 1.77 inches
 - 4- Phillip Zach, *Dust*, 2013
Foam, UV direct print, 31.5 x 19.68 x 1.1 inches
 - 5- Camilla Wills, *Dictated from the Bed*, 2011
Video, 3:00 minutes
 - 6- Camilla Wills, *Management*, 2014
Digital giclee print with screen-printing, archival paper, 33 x 23.5 inches
 - 7- Phillip Zach, *Open Your Mind*, 2013
Foam, UV direct print, 34.65 x 31.5 x 1.57 inches
 - 8- Michael Dean, *not titled/(untitled) finger*, 2014
Concrete and glue, two parts; 6.6 x 2.7 x .3 inches, 3.1 x 0.7 x 0.3 inches
 - 9- Camilla Wills, *Poster I*, 2014
Digital print, 33 x 23.5 inches
 - 10- Camilla Wills, *Poster II*, 2013
Digital print, 33 x 23.5 inches
 - 11- Robert Longo, *Study after Joan Mitchell, Ladybug, 1957*, 2013
Ink and charcoal on vellum, 15 x 20 7/8 inches
 - 12- Robert Longo, *Study after Franz Kline, Cupola, 1958-60*, 2013
Ink and charcoal on vellum, 15 3/8 x 20 3/4 inches
 - 13- Phillip Zach, *Ashes*, 2013
Foam, UV direct print, 31.5 x 19.68 x 1.1 inches
 - 14- Amelie von Wulffen, *At the Cool Table*, 2013
Film based on sixty seven drawings, 28:36 minutes
 - 15- Sanya Kantarovsky, *Less*, 2014
Powder coated aluminum, 18 x 63 inches
 - 16- Sanya Kantarovsky, *More or Less*, 2013
Oil, watercolor on linen, 36 x 30 inches
 - 17- Sanya Kantarovsky, *More*, 2014
Powder coated aluminum, two parts, 15 x 62 inches
- Façade- Camilla Wills
Sovereignty Frottage, 2014
Digital print on vinyl, chalk, 154 x 154 inches

Cover

The Official Seal of Bard College, Annandale-on-Hudson, New York

Bird Girl, Antony & the Johnsons, 2005

Support

The Andy Warhol Foundation for the Visual Arts

Foundation for Contemporary Arts

Lenders

Michael Dean appears courtesy the artist and Herald St., London

Sanya Kantarovsky appears courtesy the artist and Casey Kaplan, New York

Robert Longo appears courtesy the artist and Metro Pictures, New York

Amelie von Wulffen appears courtesy Galerie Meyer Kainer, Vienna and Gio Marconi, Milan

Camilla Wills appears courtesy the artist

Phillip Zach appears courtesy the artist

White Flag Projects

Matthew Strauss

Founder & Director

Sam Korman

Assistant Director

B.J. Vogt

Installation

Anya Kavanaugh, Katherine Page, Ambika Subramaniam, Christopher Thompson

Interns

WHITE FLAG PROJECTS

4568 Manchester Avenue

Saint Louis, Missouri 63110

www.whiteflagprojects.org