



Paweł Althamer  
*Wiatr (Wind)*, 2020  
Ink on paper  
28 x 21.5 cm, framed



Paweł Althamer  
*Comeback of Son*, 2020  
Burnt paper and ecoline brush pen on paper  
28 x 20.8 cm, framed



Paweł Althamer  
*Yin and Yang*, 2020  
Ink on paper  
28 x 21.5 cm, framed



Paweł Althamer  
*Illuminated*, 2020  
Glazed ceramic  
105 x 60 x 52 cm



Barbara Falender  
*Untitled, (sketch to „sphere“-cycle)*, approx. 1985  
Colored pencil on black paper  
50 x 60 cm



Barbara Falender  
*Untitled, (sketch to „sphere“-cycle)*, approx. 1985  
Colored pencil on black paper  
50 x 60 cm



Barbara Falender  
*Untitled, (sketch to „sphere“-cycle)*, approx. 1985  
Colored pencil on black paper  
50 x 60 cm

# BRAUNSFELDER



Teresa Gierzyńska

*Sisterhood*, 2004-2023

Pigment inkjet print on archival paper, UV-glass

36 x 48.5 cm



BRAUNSFELDER



Teresa Gierzyńska

*Waiting V*, 1990

Gelatin silver print on matte paper, white frame, UV-glass  
15 x 20 cm



Teresa Gierzyńska

*Waiting II*, 1990

Gelatin silver print on matte paper, white frame, UV-glass  
15 x 20 cm

BRAUNSFELDER



Teresa Gierzyńska

*Foot*, 1983

Gelatin silver print on matte paper, black frame, UV-glass  
21.5 x 14 cm



Teresa Gierzyńska

*Waiting IV*, 1990

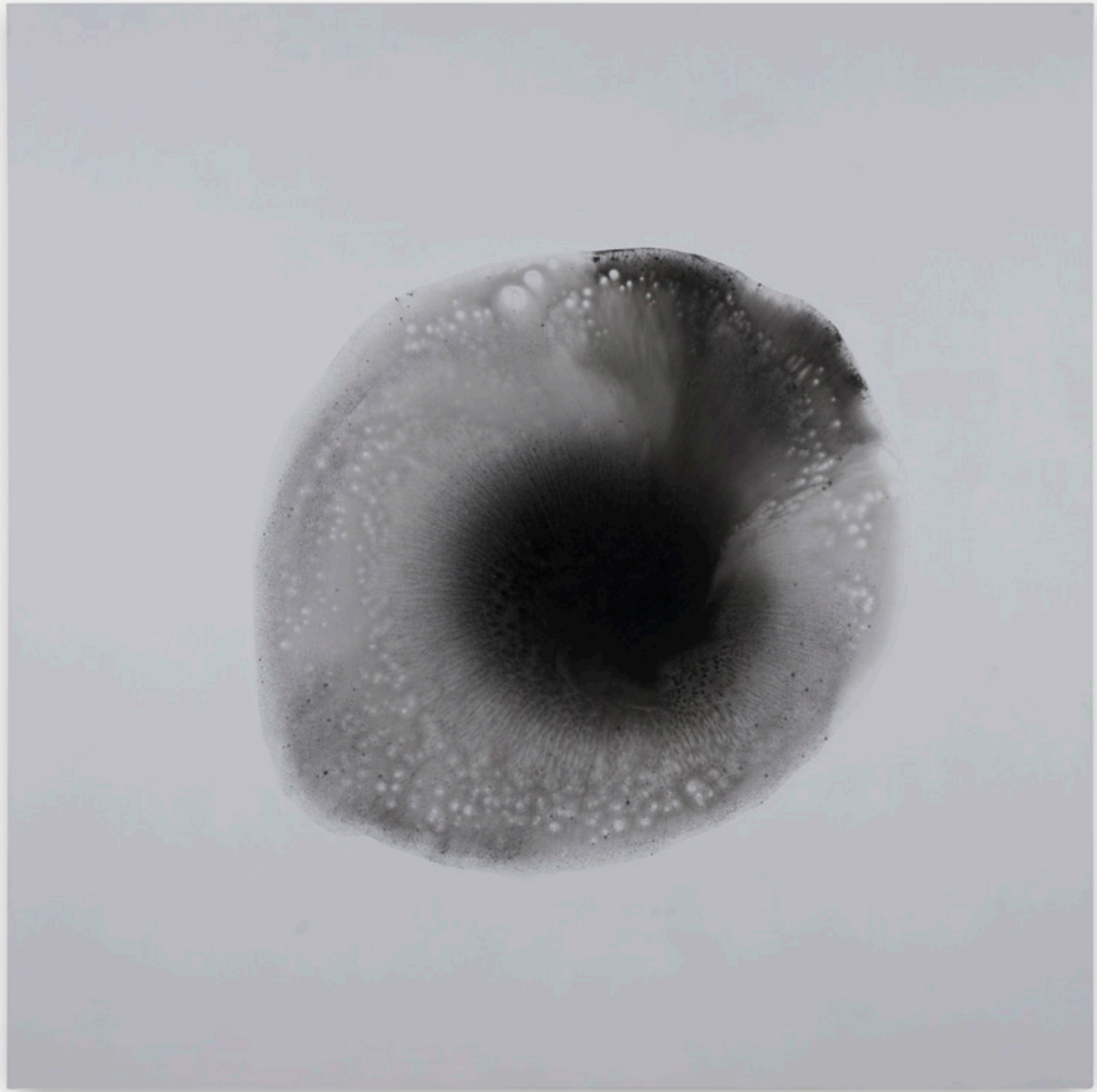
Gelatin silver print on matte paper, white frame, UV-glass  
15 x 20 cm



Teresa Gierzyńska  
*Just not a light blouse with no cleavage*, 1990  
Gelatin silver print on matte paper, UV-glass  
17 x 16 cm



Kami Mierzvinsk  
*Untitled*, 2023  
Acrylic/mixed technique on linen canvas  
70 x 70 cm



Kami Mierzvinsk  
*Untitled, 2023*  
Acrylic/mixed technique on linen canvas  
180 x 180 cm

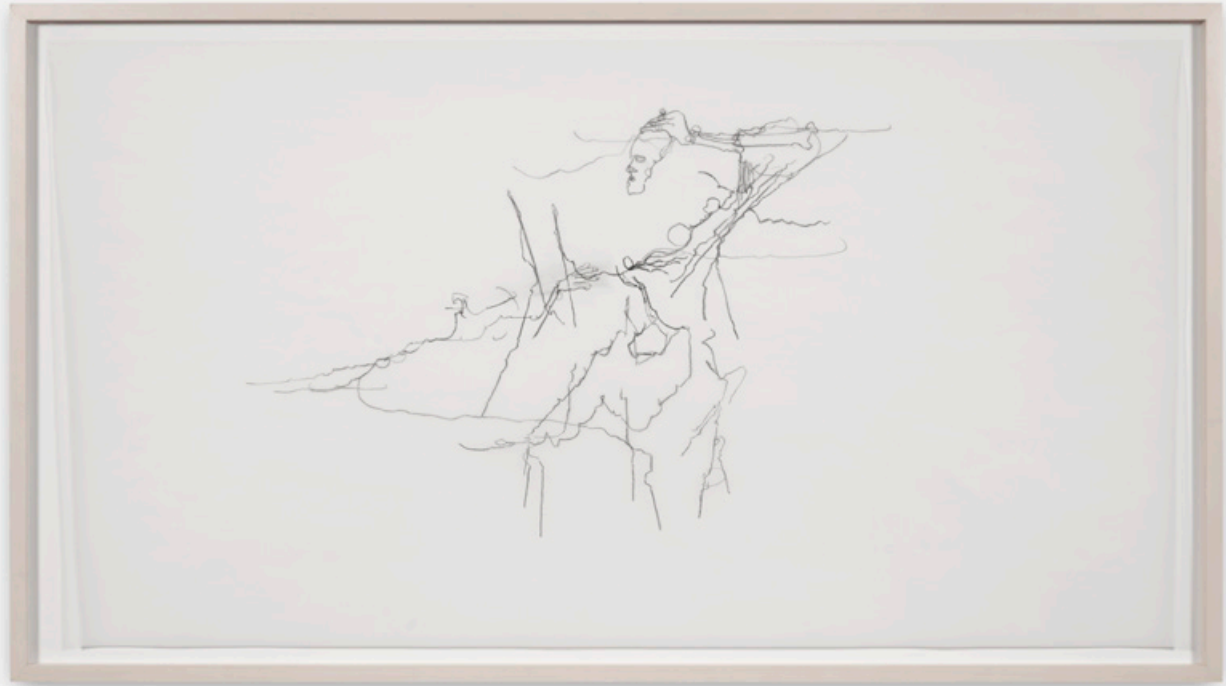


Chloe Piene  
*UNTITLED (CL)*, 2010-2023  
Ferrous steel  
83.8 x 35.6 x 33 cm  
Ed 1/3 + 1 AP





Chloe Piene  
*SHOD*, 2022  
Charcoal on vellum  
101.6 x 91.4 cm



Chloe Piene  
*AT CIU (I SEE) / SINÉAD*, 2016-2023  
Charcoal on vellum  
170 x 91.4 cm



Chloe Piene  
*BABA*, 2023  
White chalk on black tissue paper  
75 x 50 cm

BRAUNSFELDER

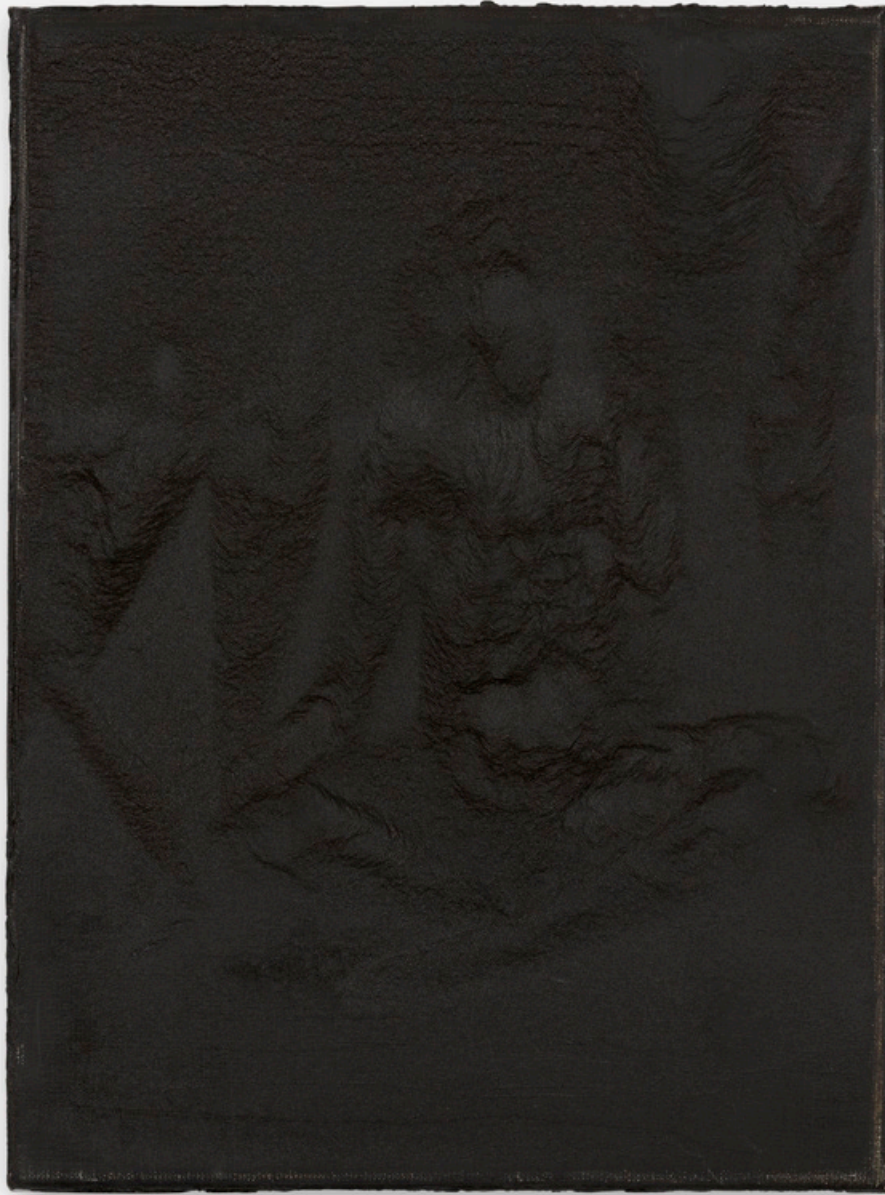


Cyryl Polaczek  
*Bosch*, 2014  
Oil on canvas  
46 x 34 cm

BRAUNSFELDER



Cyryl Polaczek  
*Smell (Węch)*, 2017  
Oil on canvas  
58 x 45 cm



Cyryl Polaczek  
*Cannibals (Ludożercy)*, 2018  
Oil on canvas  
40 x 30 cm



Filip Rybkowski  
*Posture Study (sculpture)*, 2023  
Acrylic, marble dust, fiberglas, metal, vice  
33 x 50 x 44 cm  
Ed. 1/3 + 1 AP



Filip Rybkowski  
*Double Trouble (scarcity control)*, 2023  
Mixed media  
121.5 x 121.5 cm





Filip Rybkowski  
*Double Trouble (surplus management)*, 2023  
Mixed media  
121.5 x 121.5 cm



Justyna Smoleń  
*Balerina*, 2021  
Porcelain collage  
19 x 10 x 8 cm



Justyna Smoleń  
*Fall, 2020*  
Porcelain collage  
21 x 16 x 11 cm



Justyna Smoleń  
*Girl, 2020*  
Porcelain collage  
19 x 10 x 8 cm



Justyna Smoleń

*Hybrid*, 2020

Porcelain, shells, ceramic adhesive, wood, epoxy puttie

54 x 38 x 41 cm



Justyna Smoleń

*Lucky tree*, 2020

Porcelain, ceramic, shells, ceramic adhesive, epoxy puttie

30 x 32 x 57 cm



Alina Szapocznikow  
*Lips*, approx. 1965  
Polyester  
5 x 2.5 x 2.5 cm



Alina Szapocznikow  
*Study of a Nude*, 1959  
Pencil on paper  
30 x 22 cm





Michał Zawada  
*Landscape with Black River and a Fist*, 2019  
Oil on canvas  
140 x 120 cm



Michał Zawada  
*The Hand that will Rule the World (...)*, 2021  
Oil on canvas  
140 x 120 cm



Michał Zawada  
*Night Sky with Moon and a Fist*, 2020  
Oil on canvas  
40 x 30 cm



Michał Zawada  
*Landscape with a Hand and Black Fire*, 2022  
Oil on canvas  
40 x 40 cm