

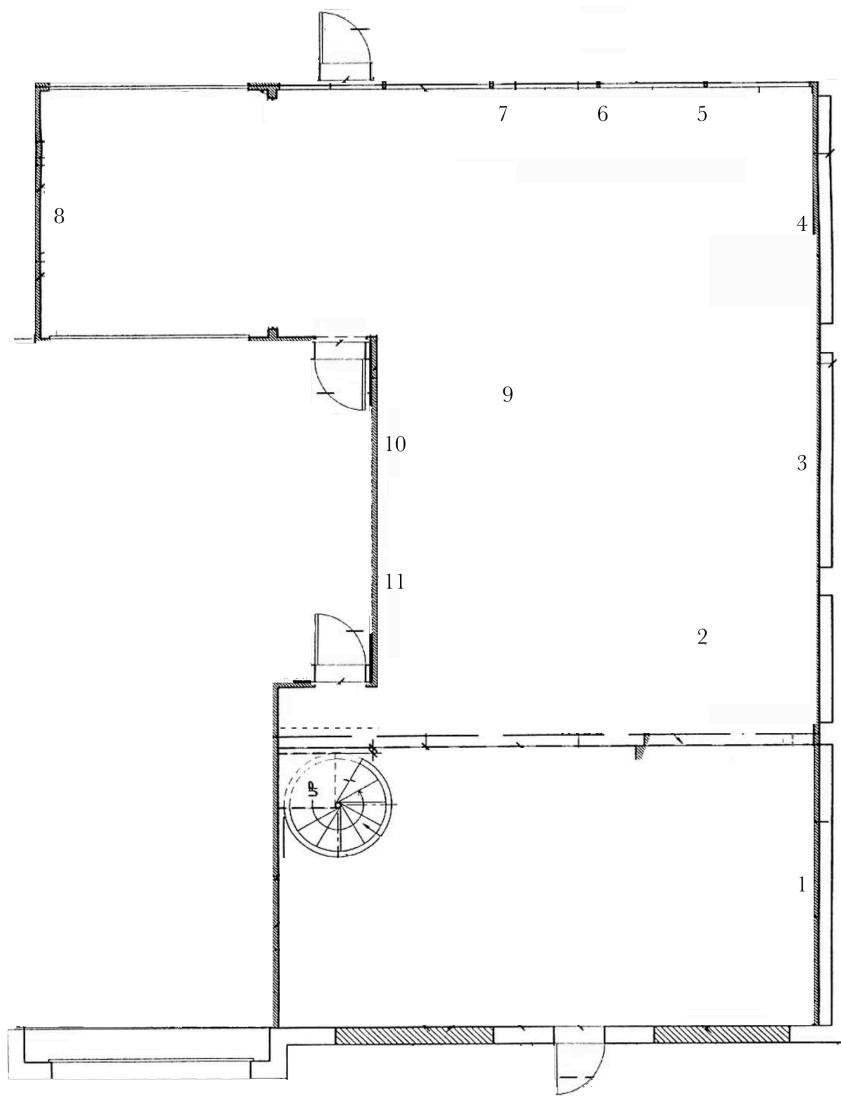


WHITE FLAG PROJECTS

# *A Peg to Hang It On*

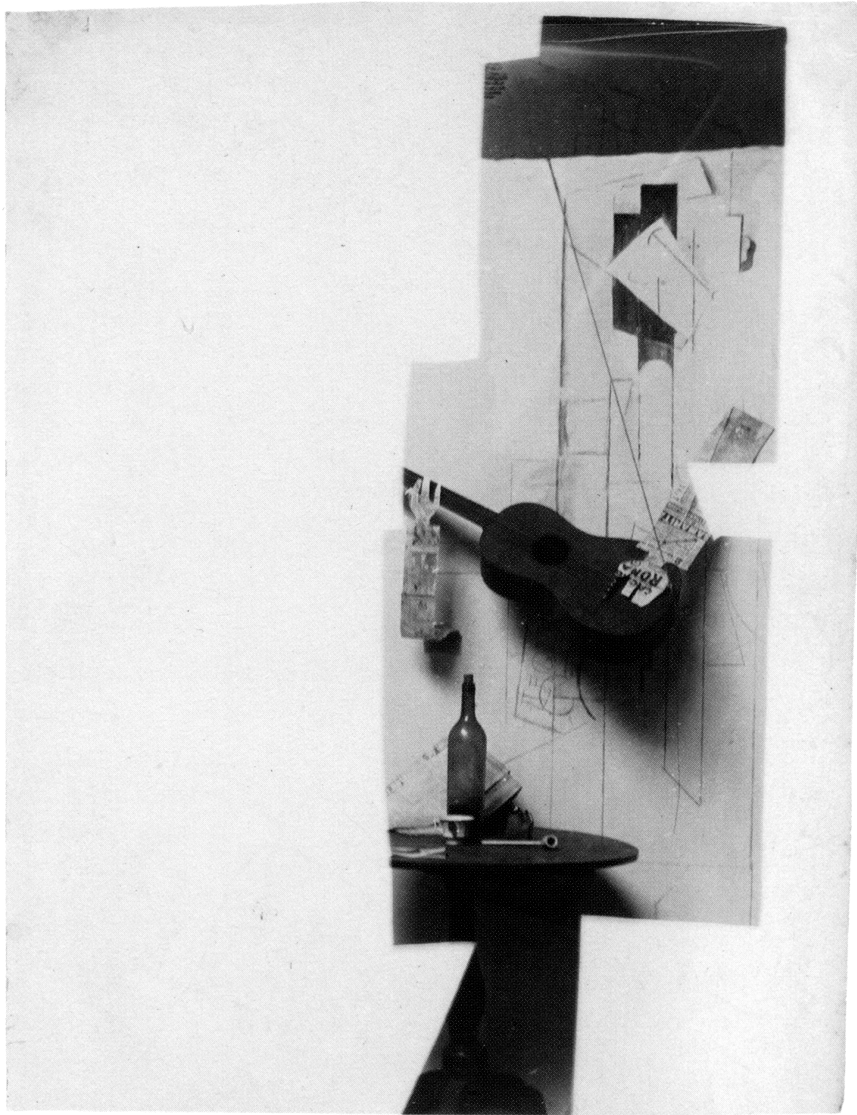
April 18 – May 30, 2015

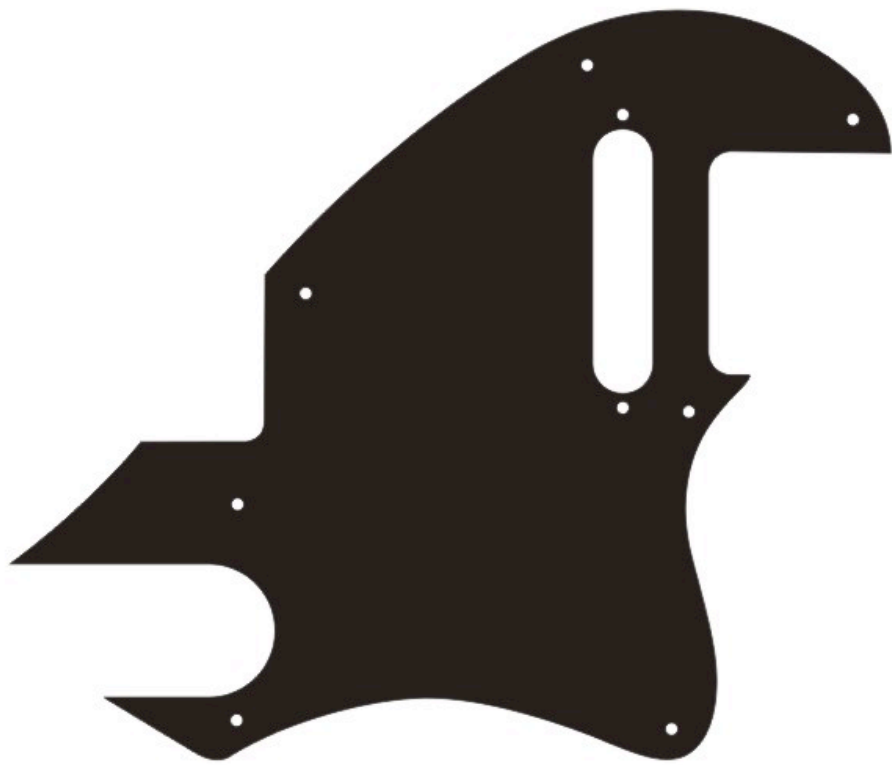
Strauss Bourque-LaFrance  
Jennifer Boysen  
Jeremy DePrez  
Sam Moyer  
Noam Rappaport  
Michael Rey  
Betty Woodman





- 1- Jennifer Boysen  
*Untitled*, 2013  
Pigment and tempera on canvas  
156 x 58 inches
  
- 2- Betty Woodman  
*Green Border Rug*, 2011  
Glazed earthenware, canvas, acrylic paint  
56 x 43 1/4 inches
  
- 3- Noam Rappaport  
*Reverse Impression*, 2014  
Oil and acrylic on canvas  
60.75 x 58.625 x 1.75 inches
  
- 4- Sam Moyer  
*Me and My Arrow*, 2015  
Marble, ink on canvas mounted to MDF panel  
56 1/4 x 43 x 3/4 inches
  
- 5- Michael Rey  
*M. Cizzer-Pur*, 2015  
Oil on Plasticine clay on panel  
80 x 28 x 1.5 inches
  
- 6- Michael Rey  
*WATTT*, 2015  
Oil on Plasticine clay on panel  
50 x 28 x 1.5 inches
  
- 7- Michael Rey  
*Bird Signal*, 2015  
Oil on Plasticine clay on panel  
80 x 32 x 1.5 inches
  
- 8- Strauss Bourque-LaFrance  
*Mothership*, 2015  
Altered bed sheet  
85 x 68 inches
  
- 9- Betty Woodman  
*Blue Rug*, 2011  
Glazed earthenware, canvas, acrylic paint  
43 x 139 1/4 inches
  
- 10- Jeremy DePrez  
*Untitled (MMMMMMMMMMMMMMMMMMMMMMMMMMMM)*, 2015  
Acrylic and modeling paste on canvas over panel  
84 x 58.5 inches
  
- 11- Jeremy DePrez  
*Untitled*, 2015  
Acrylic on canvas  
85.5 x 53 inches
  
- Façade- Strauss Bourque-LaFrance  
*Dracula Lives Here*, 2015  
Digital print on vinyl; 154 x 154 inches







### About the artists

Strauss Bourque-LaFrance has held solo exhibitions with Rachel Uffner Gallery, New York; Bodega, Philadelphia; and KANSAS, New York. His work has been included in group exhibitions with the Institute for Contemporary Art (ICA) Philadelphia; SculptureCenter, Long Island City; and Vox Populi, Philadelphia. Bourque-LaFrance earned his MFA from the Tyler School of Art, Philadelphia and the Skowhegan School of Painting and Sculpture. He lives and works in Brooklyn.

Jennifer Boysen has exhibited with Cherry and Martin, Los Angeles; LACMA, Los Angeles; Galerie Frank Elbaz, Paris; Public Fiction, Los Angeles; Night Gallery, Los Angeles; and Kate Werble Gallery, New York. Boysen received her MFA from Hunter College. She lives and works in Sierra Madre, California.

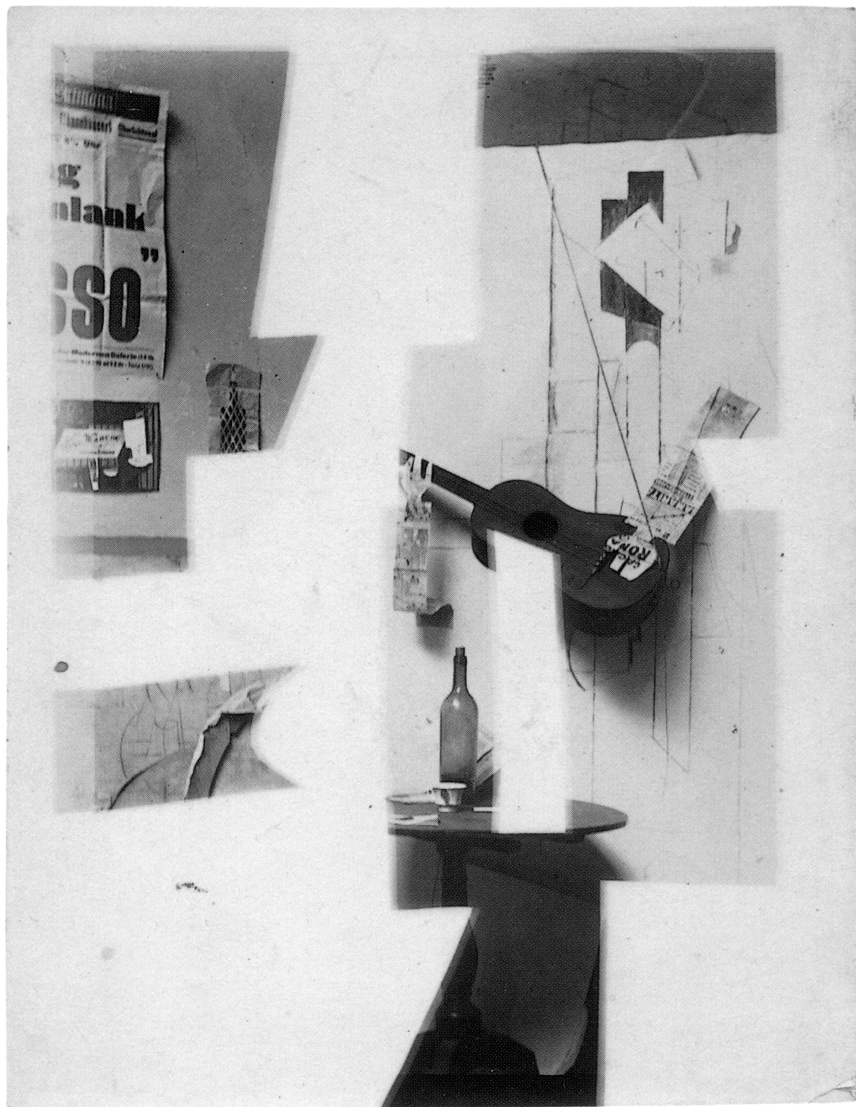
Jeremy DePrez has exhibited with Zach Feuer, New York; Blaffer Museum, Houston; Luxembourg & Dayan, New York; and Colab Projects/Fretchen, Austin. DePrez earned his MFA from the University of Houston. He lives and works in Houston.

Sam Moyer has held solo and two-person exhibitions with Rachel Uffner Gallery, New York; Société, Berlin; Cleopatra's, Brooklyn; and Galerie Rodolphe Janssen, Brussels. Moyer has contributed works to group exhibitions with Artists Space, New York; Brand New Gallery, Milan; Swiss Institute, New York; Tensta Konsthall, Stockholm; MoMA P.S.1, Long Island City; UNTITLED, New York; Tanya Bonakdar Gallery, New York; Public Art Fund, New York; Night Gallery, Los Angeles; and Clifton Benevento Gallery, New York. She received her MFA from Yale. Moyer lives and works in Brooklyn.

Noam Rappaport has held solo and two-person exhibitions with James Fuentes, New York; White Columns, New York; Ratio 3, San Francisco; and ATM Gallery, New York. Rappaport has participated in group exhibitions with Artists Space, New York; Brand New Gallery, Milan; Printed Matter, New York; Tanya Bonakdar Gallery, New York; and Cherry and Martin, Los Angeles. His work has been discussed in Artforum, The New York Times, and Art in Review among other publications. He holds a BFA from the School of Visual Arts, New York. Rappaport lives and works in Los Angeles.

Michael Rey has held solo exhibitions with Cherry and Martin, Los Angeles; Room East, New York; Young Art, Los Angeles, and has forthcoming solo exhibitions with Office Baroque, Brussels and Zero, Milan. Rey has participated in group exhibitions with the Swiss Institute, New York; and Lisson Gallery, London among others. Rey earned his MFA at the Art Center College of Design. He lives and works in Los Angeles.

Betty Woodman has held solo exhibitions with Salon 94, New York; Stedelijk Museum, Amsterdam; Galerie Isabella Bortolozzi, Berlin; Galerie Francesca Pia; Zurich; and the Metropolitan Museum of Art, New York. Her group exhibitions include the Museum of Modern Art, New York; The Walker Art Center, Minneapolis; and the LACMA, Los Angeles. Woodman lives and works in New York City and Antella, Italy.



## Illustrations

Cover- Gibson Flying V Guitar Pickguard

1- Pablo Picasso, Photographic composition with *Construction with Guitar Player*, 1913  
Masked silver gelatin print, 4 5/16 x 3 9/16 inches

2- Fender Telecaster F-Hole Guitar Pickguard

3- Gibson SG Standard Guitar Full Face Pickguard

4- Pablo Picasso, Photographic composition with *Construction with Guitar Player*, 1913  
Masked silver gelatin print, 4 1/2 x 3 7/16 inches

Back cover- Pablo Picasso, Photographic composition with *Construction with Guitar Player*, 1913  
Silver gelatin print, 4 5/8 x 3 7/16 inches

## Support

The Andy Warhol Foundation for the Visual Arts

## Lenders

Strauss Bourque-LaFrance courtesy the artist and Rachel Uffner Gallery, New York

Jennifer Boysen courtesy the artist and Cherry and Martin, Los Angeles

Sam Moyer courtesy the artist and Rachel Uffner Gallery, New York

Noam Rappaport courtesy the artist and James Fuentes, New York

Michael Rey courtesy the artist and Cherry and Martin, Los Angeles

Jeremy DePrez courtesy the artist and Zach Feuer, New York

Betty Woodman courtesy the artist and Salon94, New York

## White Flag Projects

Matthew Strauss  
*Founder & Director*

Marie Heilich  
*Assistant Director*

Tim Young  
*Installation Manager*

Mac Holtsclaw, Shirin Rastin  
*Interns*

WHITE FLAG PROJECTS  
4568 Manchester Avenue  
Saint Louis, Missouri 63110

[www.whiteflagprojects.org](http://www.whiteflagprojects.org)



WHITE FLAG PROJECTS