

Foxy Production
2 East Broadway, 200
New York, NY 10038, USA
T +1 212 239 2758 foxyproduction.com

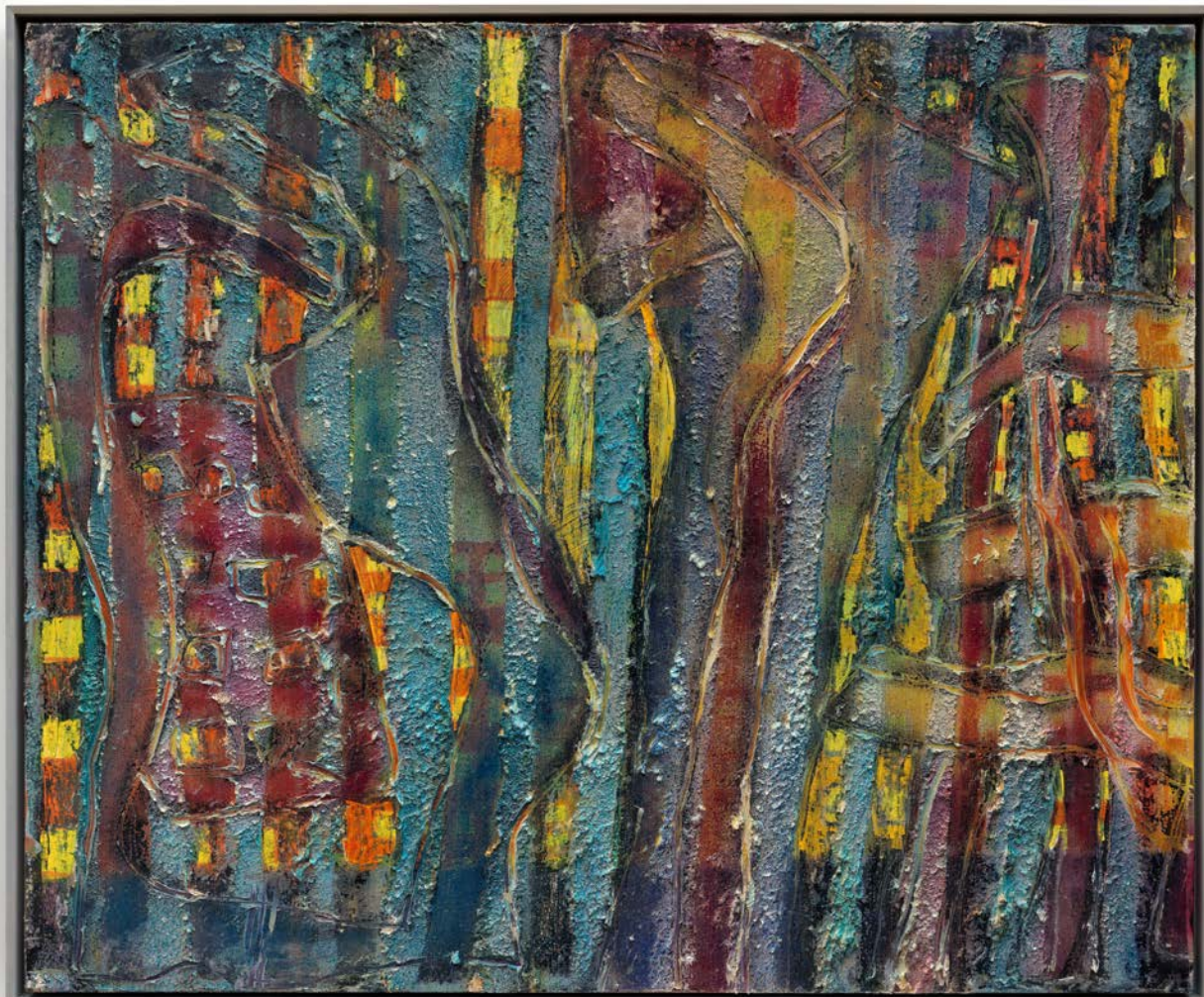
GABRIEL HARTLEY
RELIEFS
OCTOBER 30 - DECEMBER 18, 2016

FOXY PRODUCTION



Gabriel Hartley
Windows, 2016
Oil and spray paint on canvas 57 x
68 in., (144.78 x 172.72 cm)
GH_FP3574

FOXY PRODUCTION



Gabriel Hartley
Light, 2016
Oil and spray paint on canvas 57
x 68 in. (144.78 x 172.72 cm.)
GH_FP3571

FOXY PRODUCTION



Gabriel Hartley
Bronze Bricks, 2016
Oil and pray paint on canvas
57 x 68 in. (144.78 x 172.72 cm)
GH_FP3575

FOXY PRODUCTION



Gabriel Hartley
Rill, 2016
 Foam, resin, pigment
 11 x 29 x 3 4/5 in.
 GH_FP3595



Gabriel Hartley
House, 2016
 Foam, resin, pigment
 9 4/5 x 11 7/10 x 2 2/5 in.
 GH_FP3578

FOXY PRODUCTION



Gabriel Hartley
Pad, 2016
 Foam, resin, pigment
 17 25 x 12 45 x 2 in.
 GH_FP3581



Gabriel Hartley
Capital, 2016
 Foam, resin, pigment
 15 x 13 x 2 in.
 GH_FP3604

FOXY PRODUCTION



Gabriel Hartley
Sash, 2016
 Foam, resin, pigment
 9 x 6 x 11 1/2 in
 GH_FP3584



Gabriel Hartley
Jettied, 2016
 Foam, resin, pigment
 22 4/5 x 10 3/25 x 3 in.
 GH_FP3606

FOXY PRODUCTION

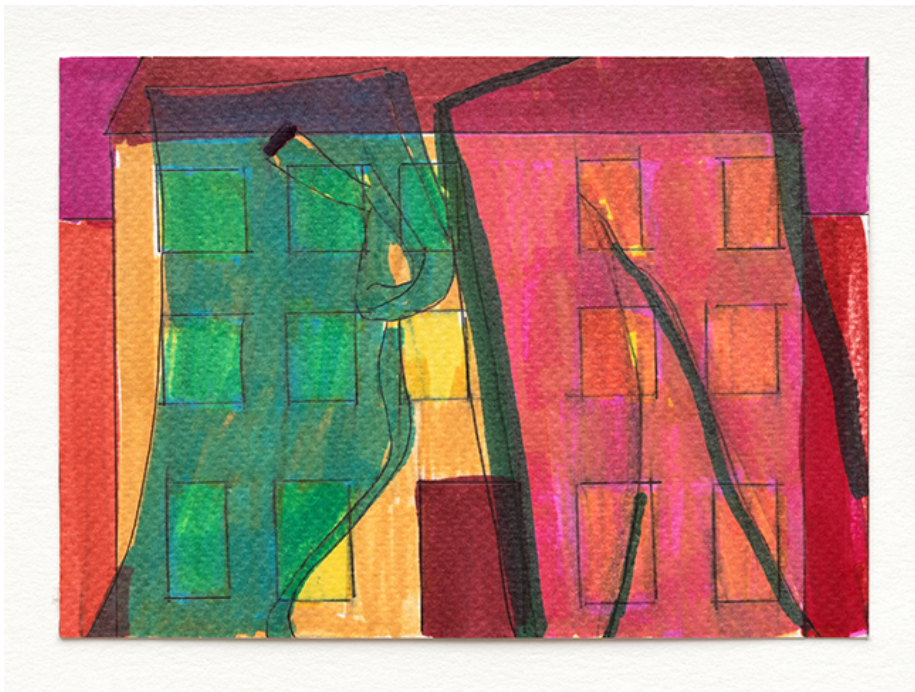


Gabriel Hartley
Lunch Break, 2016
 Foam, resin, pigment
 24 x 12 x 2 in.
 GH_FP3587



Gabriel Hartley
Chips, 2016
 Foam, resin, pigment
 20 x 20 x 2 4/5 in.
 GH_FP3585

FOXY PRODUCTION



Gabriel Hartley
Ashwin (Study), 2016
 Felt tip and pencil on paper
 6 x 8 in. (15.24 x 20.32 cm.)
 (image size)
 GH_FP3614



Gabriel Hartley
Windows (Study 2)
 2016
 Felt tip and pencil on paper
 6 x 8 in. (15.24 x 20.32 cm.) (image size)
 GH_FP3612

FOXY PRODUCTION



Gabriel Hartley
Bronze Bricks (Study)
 2016
 Felt tip and pencil on paper
 6 x 8 in. (15.24 x 20.32 cm.) (image size)
 GH_FP3611



Gabriel Hartley
Light (Study), 2016
 Felt tip and pencil on paper
 6 x 8 in. (15.24 x 20.32 cm.)
 (image size) GH_FP3610

FOXY PRODUCTION

Foxy Production
2 East Broadway, 200
New York, NY 10038, USA
T +1 212 239 2758 foxyproduction.com

GABRIEL HARTLEY RELIEFS

Oct. 30 - Dec. 18, 2016.

**Gallery hours: Wed. - Sun.,
11 - 6:00 PM.**

Foxy Production is pleased to present Gabriel Hartley's Reliefs, a new series of paintings, sculptures, and studies on paper. Hartley is concerned with the many ways the painted image can be interpreted; as Jean-François Lyotard has written: "Painting has little to do with the visible and much to do with the past and future, memory and the possible, acknowledgment and estrangement." Formal elements – texture, depth, color, and line – override the integrity of images of the city and the body to allow the viewer multiple points of connection.

Hartley's paintings have vertical fields that intermingle with organic, curved shapes, and luminescent windows. Suggesting buildings, highways, bodies, and the flourishes of graffiti, they take the city as their multi-layered subject. Recalling Paul Klee's architectural paintings, Hartley's work is an allusive mix of pattern and figuration, where the metropolis is inscribed with a psychic power. Not unlike a J G Ballard novel, the city is both landscape and character.

Hartley's colorful reliefs have a variety of forms and content - some are curved shapes that appear to have jumped straight out of his paintings, some are models of the buildings in his canvases, while others are sculptural framed versions of his paintings. They all seem to be in transition between painting and sculpture, between picture and frame, or between figure and ground.

The artist's drawings are studies for his painting and could be seen as portals between his paintings and reliefs. With vivid color, they distill pictorial elements that are then elaborated upon in his paintings.

Tapping into the history of modernist renderings of cities, objects and figures, Hartley transforms the pictorial plane into a meditation on perception. His subjects are dynamic, evolving into view while also transforming into something else, undergoing what Rosalind Krauss has called the "emergence of the perceptual object to vision."

Gabriel Hartley (London, UK, 1981) lives and works in London, UK. He holds a Post Graduate Diploma in Fine Art from the Royal Academy Schools, London, UK. Selected exhibitions include Lozenges, Pippy Houldsworth Gallery, London, UK (solo) (2015); Splays, Brand New Gallery, Milan, Italy (solo); Open Heart Surgery, The Moving Museum, London, UK (both 2013); Slap, Praz-Delavallade, Paris, France (solo) (2012); Crimping, Arte Furini Contemporanea, Rome (solo) (2011); Gabriel Hartley, Foxy Production, New York, NY (solo) (2010); Gabriel Hartley, Swallow Street, London, UK (solo); Jerwood Contemporary Painting Prize, Jerwood Space, London, UK (both 2009); John Moores Painting Prize, Walker Art Gallery (2008); Bloomberg New Contemporaries, Club Row, London; Cornerhouse, Manchester; and The New Art Gallery Walsall, UK (2007-2008).

FOXY PRODUCTION

Foxy Production
2 East Broadway, 200
New York, NY 10038, USA
T +1 212 239 2758 foxyproduction.com

All works are subject to availability and taxes where applicable.

FOXY PRODUCTION