

# JESSICA SILVERMAN GALLERY

Works available by MATTHEW ANGELO HARRISON

4 April 2018



**Matthew Angelo Harrison**

*Synthetic Lipiko no. 1, 2018*

Wooden sculpture, anodized aluminum, acrylic

Overall: 51 5/8 x 20 x 13 inches / 131.13 x 50.8 x 33.02 cm

Sculpture: 9 5/8 x 15 x 7 1/2 inches / 24.5 x 38 x 19 cm

Pedestal: 42 x 20 x 13 inches / 121.92 x 50.8 x 33.02 cm

(MAH00078ST)



**Matthew Angelo Harrison**

*Dark Silhouette: Female Fragment, 2018*

Wooden sculpture from West Africa, polyurethane resin, anodized aluminum, acrylic

Overall: 52 1/4 x 13 x 13 inches / 132.72 x 33.02 x 33.02 cm

Sculpture: 10 1/4 x 9 3/4 x 3 1/2 inches / 26 x 24.7 x 9 cm

Pedestal: 42 x 13 x 13 inches / 106.68 x 33.02 x 33.02 cm

(MAH00077ST)



**Matthew Angelo Harrison**

*Dark Silhouette: Standing Couple, 2018*

Wooden sculpture from West Africa, polyurethane resin, anodized aluminum, acrylic

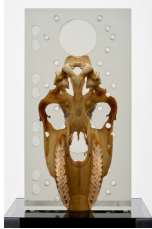
Overall: 67 3/8 x 13 x 13 inches / 171.13 x 33.02 x 33.02 cm

Sculpture: 19 3/8 x 9 1/4 x 5 1/4 inches / 49.2 x 23.5 x 13.5 cm

Pedestal: 48 x 13 x 13 inches / 121.92 x 33.02 x 33.02 cm

(MAH00075ST)

# JESSICA SILVERMAN GALLERY



**Matthew Angelo Harrison**

*Dark Silhouette: Zebra Manifold Composition no.1,*  
2018

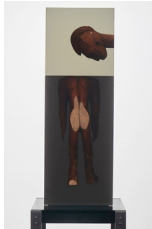
Zebra bone, polyurethane resin, anodized  
aluminum, acrylic

Overall: 66 1/2 x 13 x 13 inches / 168.91 x 33.02 x  
33.02 cm

Sculpture: 18 1/2 x 9 3/4 x 3 3/4 inches / 47 x 24.6 x  
9.5 cm

Pedestal: 48 x 13 x 13 inches / 121.92 x 33.02 x 33.02  
cm

(MAH00073ST)



**Matthew Angelo Harrison**

*Dark Silhouette: Severance,* 2018

Wooden sculpture from West Africa, polyurethane  
resin, anodized aluminum, acrylic

Overall: 64 1/8 x 13 x 13 inches / 162.94 x 33.02 x  
33.02 cm

Sculpture: 28 1/8 x 9 7/8 x 4 inches / 71.5 x 25 x 10  
cm

Pedestal: 36 x 13 x 13 inches / 91.44 x 33.02 x 33.02  
cm

(MAH00069ST)

All images are Courtesy of the artist and Jessica Silverman  
Gallery.