

# JESSICA SILVERMAN

JudyChicago\_JSG\_Checklist2020

20 September 2023



**Judy Chicago**

*Trinity (outdoor version), 1965/2019*

Matthews polyurethane paint on stainless steel

Overall installation dimensions: 64 x 127 x 60 inches / 162.6 x 322.6 x 152.4 cm

Edition of 3 plus 1 artist's proof  
(JCH00441PR)



**Judy Chicago**

*Through the Flower, 1991*

Serigraph

31 x 30 inches / 78.7 x 76.2 cm

33 x 32 inches / 83.9 x 81.3 cm, framed

Edition 62 of 100

(JCH00451PR)



**Judy Chicago**

*Through the Flower, 1991*

Serigraph

31 x 30 inches / 78.7 x 76.2 cm

33 x 32 inches / 83.9 x 81.3 cm, framed

Edition 63 of 100

(JCH00452PR)



**Judy Chicago**

*Dress Rehearsal Rag, 2019*

China paint and pen work on porcelain

Painting: 14 x 10 inches / 35.6 x 25.4 cm

Framed: 17 x 13 x 2 1/4 inches / 43.2 x 33 x 5.7 cm

(JCH000356PNT)



**Judy Chicago**

*Study for Bird on a Wire, 2018*

China paint and pen work on porcelain

Painting: 10 x 14 inches / 25.4 x 35.6 cm

Framed: 13 x 17 x 2 1/4 inches / 33 x 43.2 x 5.7 cm

(JCH000357PNT)

# JESSICA SILVERMAN



**Judy Chicago**

*Boogie Street*, 2019

China paint on porcelain

Painting: 14 x 10 inches / 35.6 x 25.4 cm

Framed: 17 x 13 x 2 1/4 inches / 43.2 x 33 x 5.7 cm  
(JCH000358PNT)



**Judy Chicago**

*Bird on a Wire 2*, 2018

China paint and pen work on porcelain

Painting: 10 x 14 inches / 25.4 x 35.6 cm

Framed: 13 x 17 x 2 1/4 inches / 33 x 43.2 x 5.7 cm  
(JCH000359PNT)



**Judy Chicago**

*Cohanim*, 2019

Lustre, china paint, and pen work on porcelain

Painting: 10 x 14 inches / 25.4 x 35.6 cm

Framed: 13 x 17 x 2 1/4 inches / 33 x 43.2 x 5.7 cm  
(JCH000360PNT)



**Judy Chicago**

*Bird on a Wire*, 2018

China paint and pen work on porcelain

Painting: 10 x 14 inches / 25.4 x 35.6 cm

Framed: 13 x 17 x 2 1/4 inches / 33 x 43.2 x 5.7 cm  
(JCH000361PNT)



**Judy Chicago**

*Famous Blue Raincoat*, 2018

China paint and pen work on porcelain

Painting: 10 x 14 inches / 25.4 x 35.6 cm

Framed: 13 x 17 x 2 1/4 inches / 33 x 43.2 x 5.7 cm  
(JCH000362PNT)



**Judy Chicago**

*Gallop Mare*, 2018

China paint on porcelain

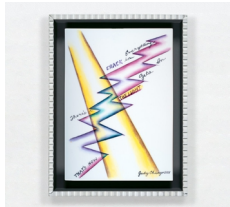
10 x 14 inches / 25.4 x 35.6 cm

13 x 17 x 2 1/4 inches / 33 x 43.2 x 5.7 cm, framed  
(JCH000363PNT)

# JESSICA SILVERMAN



**Judy Chicago**  
*Burning Violin*, 2018  
China paint on porcelain  
Painting: 14 x 10 inches / 35.6 x 25.4 cm  
Framed: 17 x 13 x 2 1/4 inches / 43.2 x 33 x 5.7 cm  
(JCH000364PNT)



**Judy Chicago**  
*Anthem*, 2018  
China paint and pen work on porcelain  
Painting: 14 x 10 inches / 35.6 x 25.4 cm  
Framed: 17 x 13 x 2 1/4 inches / 43.2 x 33 x 5.7 cm  
(JCH000365PNT)



**Judy Chicago**  
*Farewell to Leonard Cohen*, 2019  
Pen work on porcelain  
Painting: 10 x 14 inches / 25.4 x 35.6 cm  
Framed: 13 x 17 x 2 1/4 inches / 33 x 43.2 x 5.7 cm  
(JCH000366PNT)



**Judy Chicago**  
*By the Rivers Dark*, 2019  
China paint and pen work on porcelain  
Painting: 10 x 14 inches / 25.4 x 35.6 cm  
Framed: 13 x 17 x 2 1/4 inches / 33 x 43.2 x 5.7 cm  
(JCH000367PNT)



**Judy Chicago**  
*Color Study for Would There Be Violence?*, 2019  
Prismacolor on paper  
Drawing: 22 x 30 inches / 55.9 x 76.2 cm  
Framed: 25.5 x 33.5 inches / 64.8 x 85.1 cm  
(JCH00440PR)



**Judy Chicago**  
*Three Circles*, 1968  
Sprayed acrylic lacquer on acrylic in artist's frame  
Framed: 15 1/4 x 15 1/4 x 1 inches  
38.7 x 38.7 x 2.5 cm  
(JCH00425PNT)

# JESSICA SILVERMAN



**Judy Chicago**

*Pink Atmosphere, 1971, Cal State Fullerton, Fullerton, CA, printed 2018*

Archival pigment print

Image: 24 x 36 inches / 61 x 91.5 cm

Paper: 30 x 40 inches / 76.2 x 101.6 cm

Frame: 30.5 x 40.5 inches / 77.5 x 102.9 cm

Edition of 3 plus 2 AP (#1/3)

(JCH00185PG)



**Judy Chicago**

*Smoke Bodies, 1972; from Women and Smoke, printed 2018*

Archival pigment print

Image: 36 x 36 inches / 101.6 x 101.6 cm

Paper: 40 x 40 inches / 101.6 x 101.6 cm

Frame: 40 1/2 x 40 1/2 inches / 102.87 x 102.87 cm

Edition of 3 plus 2 AP (#3/3)

(JCH00190PG)



**Judy Chicago**

*Birth Trinity, 1985*

Serigraph on Stonehenge Natural White

Paper size: 30 x 40 inches / 76.2 x 101.6 cm

Framed: 32 x 42 inches / 81.3 x 106.7 cm

(JCH00432PR)



**Judy Chicago**

*Through the Flower, 1991*

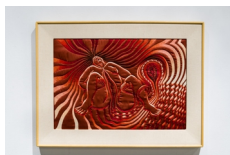
Serigraph

Print: 31 x 30 inches / 78.7 x 76.2 cm

Framed: 33 x 32 inches / 83.9 x 81.3 cm

Edition 66 of 100

(JCH00433PR)



**Judy Chicago**

*Birth Tear/Tear, 1982*

Embroidery on silk by Jane Gaddie Thompson

Primary work, framed: 20 1/2 x 27 1/2 x 1 1/2 inches / 52.1 x 69.8 x 3.8 cm

Installed size: 28 x 91 inches / 71.1 x 231.1 cm

Displayed with:

1 needlework sample: 15 x 11 inches / 38.1 x 27.9 cm

7 laminated documentation panels, each: 15 x 11 inches /

38.1 x 27.9 cm

# JESSICA SILVERMAN

1 laminated documentation panel: 31 x 11 inches / 78.7 x 27.9 cm  
(JCH000318T)



**Judy Chicago**

*Creation of the World: Petit Point 2, 1984*

Petit point over drawing on silk mesh

Petit Point by Jean Berens

Installed size: 52 inches wide

Work: 5 x 9.25 inches / 12.7 x 23.5 cm

Framed: 10.75 x 15 inches / 27.31 x 38.1 cm

4 laminated panels (each): 15 x 11 inches / 38.1 x 27.9 cm

(JCH000325T)



**Judy Chicago**

*What if Women Ruled the World? Commemorative Print, 2020*

Archival Pigment Print on paper

Image: 32 x 23 inches / 81.3 x 58.4 cm

Paper: 36 x 27 inches / 91.4 x 68.6 cm

Framed: 38 x 29 inches / 96.6 x 73.7 cm

Edition of 75 plus 4 artist's proofs

(JCH000385PR)



**Judy Chicago**

*Study for Would Buildings Resemble Wombs? Banner 7/4, 2019*

PrismaColor on paper

22 x 30 inches / 55.9 x 76.2 cm

25.5 x 33.5 inches / 64.8 x 85.1 cm, framed

(JCH00386DR)



**Judy Chicago**

*Study for Would the Earth Be Protected? Banner 10/1, 2020*

PrismaColor on paper

22 x 30 inches / 55.9 x 76.2 cm

25.5 x 33.5 inches / 64.8 x 85.1 cm, framed

(JCH000387DR)

# JESSICA SILVERMAN



**Judy Chicago**

*Study for Would God Be Female? Banner 1/10, 2019*

Prismacolor on paper

22 x 30 inches / 55.9 x 76.2 cm

25.5 x 33.5 inches / 64.8 x 85.1 cm, framed

(JCH000388DR)



**Judy Chicago**

*What is the Price of Losing Diversity?, 2019*

Prismacolor on Magnani paper

Drawing: 11 x 15 inches / 28 x 38.1 cm

Framed: 12.4 x 16.4 inches / 31.5 x 41.7 cm

(JCH000391DR)



**Judy Chicago**

*Is the Lobo Worth Saving?, 2018*

Prismacolor on Magnani paper

Drawing: 11 x 15 inches / 28 x 38.1 cm

Framed: 12.4 x 16.4 inches / 31.5 x 41.7 cm

(JCH000393DR)



**Judy Chicago**

*Land Grab, 2019*

Prismacolor on Magnani paper

Drawing: 11 x 15 inches / 28 x 38.1 cm

Framed: 12.4 x 16.4 inches / 31.5 x 41.7 cm

(JCH000394DR)



**Judy Chicago**

*Can We Let Them Live In Peace?, 2019*

Prismacolor on Magnani paper

Drawing: 11 x 15 inches / 28 x 38.1 cm

Framed: 12.4 x 16.4 inches / 31.5 x 41.7 cm

(JCH000396DR)



**Judy Chicago**

*What About the Mexican Spotted Owl?, 2018*

Prismacolor on Magnani paper

Drawing: 11 x 15 inches / 28 x 38.1 cm

Framed: 12.4 x 16.4 inches / 31.5 x 41.7 cm

(JCH000395DR)

# JESSICA SILVERMAN



**Judy Chicago**

*Fleshbark Tree*, 1995

Mixed media on Magnani paper

Paper: 30 x 22 inches / 76.2 x 55.9 cm

Framed: 39 x 31 x 1 1/2 inches / 99.1 x 78.7 x 3.8 cm

(JCH000400DR)



**Judy Chicago**

*Hopelessly Entwined*, 1996

Mixed media on Magnani paper

Drawing: 30 x 22 inches / 76.2 x 55.9 cm

Framed: 33 1/2 x 25 1/2 inches / 85.1 x 64.8 cm

(JCH000397DR)



**Judy Chicago**

*Severed Trees*, 1996

Mixed media on Magnani paper

Paper: 30 x 22 inches / 76.2 x 55.9 cm

Framed: 39 x 31 x 1 1/2 inches / 99.1 x 78.7 x 3.8 cm

(JCH000401DR)



**Judy Chicago**

*Dancing Trees*, 1995

Mixed media on Magnani paper

Drawing: 22 x 30 inches / 55.9 x 76.2 cm

Framed: 25.5 x 33.5 inches / 64.8 x 85.1 cm

(JCH000402DR)



**Judy Chicago**

*Bony Tree*, 1995

Mixed media on Magnani paper

Drawing: 30 x 22 inches / 76.2 x 55.9 cm

Framed: 33.5 x 25.5 inches / 85.1 x 64.8 cm

(JCH000405DR)



**Judy Chicago**

*The Question is, Do Trees Have Standing?*, 1996

Mixed media on Magnani paper

Drawing: 22 x 30 inches / 55.9 x 76.2 cm

Framed: 25 1/2 x 33 1/2 inches / 64.8 x 85.1 cm

(JCH000406DR)

# JESSICA SILVERMAN



**Judy Chicago**

*Pressing Himself Against Her, The Shadow's Invasion  
Drained her Very Soul, 1982*

Prismacolor on rag paper

Drawing: 30 x 22 inches / 76.2 x 55.9 cm

Framed: 33 1/2 x 25 1/2 inches / 85.1 x 64.8 cm

(JCH000408DR)



**Judy Chicago**

*Ghost Trees in the Gulf of Mexico, 1996*

Mixed media on Magnani paper

Drawing: 22 x 30 inches / 55.9 x 76.2 cm

Framed: 25.5 x 33.5 inches / 64.8 x 85.1 cm

(JCH000407DR)



**Judy Chicago**

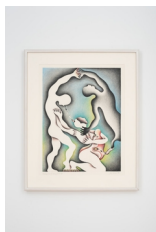
*Shadow Drawing #5 or Was She Being Leveled by Life?,  
1985*

Prismacolor on Stonehenge

Frame: 33 1/2 x 25 1/2 inches / 85.1 x 64.8 cm

Drawing: 30 x 22 inches / 76.2 x 55.9 cm

(JCH000409DR)



**Judy Chicago**

*Wrestling with the Shadow for Her Life, 1982*

Prismacolor on rag paper

Drawing: 29 x 23 inches / 73.7 x 58.4 cm

Frame: 32 3/4 x 26 1/2 x 2 inches / 83.2 x 67.3 x 5.1 cm

(JCH000410DR)



**Judy Chicago**

*Soul Mates, 2019-2020*

China paint on porcelain

Painting: 12 x 16 inches / 30.5 x 40.6 cm

Frame: 14 x 17 3/4 x 2 1/4 inches / 35.6 x 45.1 x 5.7 cm

(JCH000414PNT)



# JESSICA SILVERMAN



**Judy Chicago**

*Live and Let Live*, 2019-2020

China paint on porcelain

Painting: 12 x 16 inches / 30.5 x 40.6 cm

Frame: 14 x 17 3/4 x 2 1/4 inches / 35.6 x 45.1 x 5.7 cm  
(JCH000415PNT)



**Judy Chicago**

*Land Grab*, 2019-2020

China paint on porcelain

Painting: 12 x 16 inches / 30.5 x 40.6 cm

Frame: 14 x 17 3/4 x 2 1/4 inches / 35.6 x 45.1 x 5.7 cm  
(JCH000416PNT)



**Judy Chicago**

*Attention Please*, 2019-2020

China paint on porcelain

Painting: 12 x 16 inches / 30.5 x 40.6 cm

Frame: 14 x 17 3/4 x 2 1/4 inches / 35.6 x 45.1 x 5.7 cm  
(JCH000417PNT)



**Judy Chicago**

*El Lobo*, 2019-2020

China paint on porcelain

Painting: 12 x 16 inches / 30.5 x 40.6 cm

Frame: 14 x 17 3/4 x 2 1/4 inches / 35.6 x 45.1 x 5.7 cm  
(JCH000419PNT)



**Judy Chicago**

*Guided by the Goddess*, 1985

Silkscreen on Grey Rives BFK

Print: 30 x 40 inches / 76.2 x 101.6 cm

Framed: 32 x 42 inches / 81.3 x 106.7 cm

Edition 26 of 75

(JCH00034PR)



**Judy Chicago**

*Potent Pussy / Homage to Lamont 1*, 1973

Lithograph on rice paper

Paper: 12 x 12 inches / 30.5 x 30.5 cm

Framed: 14 x 14 inches / 35.6 x 35.6 cm

Artist Proof

(JCH00060DR)

# JESSICA SILVERMAN



**Judy Chicago**

*Potent Pussy / Homage to Lamont 2, 1973*

Lithograph on rice paper

Paper: 12 x 12 inches / 30.5 x 30.5 cm

Framed: 14 x 14 inches / 35.6 x 35.6 cm

Artist Proof

(JCH00061DR)



**Judy Chicago**

*Potent Pussy / Homage to Lamont 3, 1973*

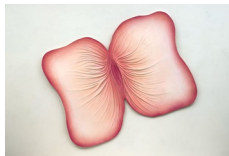
Lithograph on rice paper

Paper: 12 x 12 inches / 30.5 x 30.5 cm

Framed: 14 x 14 inches / 35.6 x 35.6 cm

Artist Proof

(JCH00062DR)



**Judy Chicago**

*Submerged/Emerged #1, 1976/2005*

Sprayed acrylic on cast paper

34 x 44 inches / 86.4 x 111.8 cm

(JCH00017PNT)



**Judy Chicago**

*Smoke Holes #2, 1969, printed 2018*

Archival pigment print

Image: 36 x 36 inches / 101.6 x 101.6 cm

Paper: 40 x 40 inches / 101.6 x 101.6 cm

Frame: 40 1/2 x 40 1/2 inches / 102.87 x 102.87 cm

Edition of 3 plus 2 AP (#3/3)

(JCH00183PG)



**Judy Chicago**

*Woman with Orange Flares, 1972; from Women and Smoke, printed 2018*

Archival pigment print

Image: 36 x 28 inches / 91.5 x 71.2 cm

Paper: 40 x 30 inches / 101.6 x 76.2 cm

Frame: 40 1/2 x 30 1/2 x 1 3/4 inches / 102.9 x 77.5 x 4.4 cm

Edition of 3 plus 2 AP (#1/3)

(JCH00191PG)

# JESSICA SILVERMAN



**Judy Chicago**

*Dark Red, Blue, Green Domes (small), 1968*

Sprayed acrylic lacquer on acrylic glass

Overall: 9 3/8 x 15 1/2 x 15 1/2 inches / 23.8 x 39.4 x 39.4 cm

Domes: 2 x 5 x 5 inches / 5.1 x 12.7 x 12.7 cm each

(JCH000343ST)



**Judy Chicago**

*Turn Over A New Leaf, 2000*

Painting, applique and embroidery on linen and charmeuse

Appliqué and embroidery by Jane Thompson

Work: 18 x 24 inches

45.7 x 61 cm

Framed: 22 x 28 1/4 x 2 1/8 inches

55.88 x 71.76 x 5.4 cm

(JCH000389PNT)



**Judy Chicago**

*The Creation, 1985*

Serigraph on black Arches

Print: 32.3 x 42.3 inches / 82.1 x 107.5 cm

Framed: 34.3 x 44.3 inches / 87.2 x 112.6 cm

Edition of 75

(JCH00053PR)