

GALERIE PEPE

Galerie Pepe is pleased to present **Echoes of Mishima** a three-person exhibition of Japanese artists **Go Mishima, Sadao Hasegawa and Tamotsu Yato**. September 21st - November 4th, 2023

LIST OF WORKS:



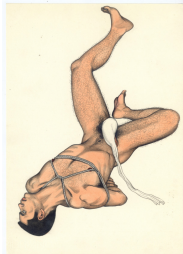
Tamotsu Yato
Yukio Mishima, 1967
Poster print on wood
515 x 650 x 230 mm



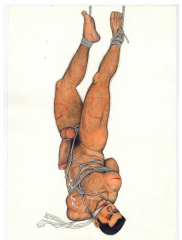
Go Mishima, Untitled, n.d.
Ink on paper
332 x 235 mm; Frame 465 x 370 x 35 mm



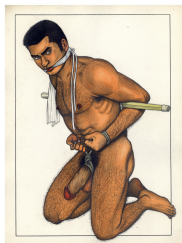
Go Mishima, Untitled, n.d.
Ink on paper
350 x 250 mm; Frame 465 x 370 x 35 mm



Go Mishima, Untitled, n.d.
Ink on paper
341 x 240 mm; Frame 465 x 370 x 35 mm



Go Mishima, Untitled, n.d.
Ink on paper
341 x 240 mm; Frame 465 x 370 x 35 mm



Go Mishima, Untitled, n.d.
Ink on paper
370 x 270 mm; Frame 465 x 370 x 35 mm



Sadao Hasegawa, Untitled, 1998
Pencil and ink on paper
237 x 322 mm



Sadao Hasegawa, Untitled, 1996
Pencil and ink on paper
236 x 325 mm



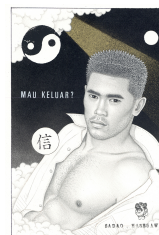
Sadao Hasegawa, Untitled, 1997
Pencil and ink on paper
235 x 321 mm



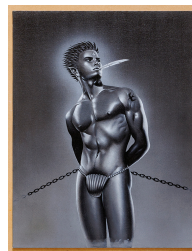
Sadao Hasegawa, Untitled, n.d.
Pencil and ink on paper
235 x 325 mm



Sadao Hasegawa, Untitled, n.d.
Acrylic on canvas
335 x 240 mm



Sadao Hasegawa, Untitled, n.d.
Pencil and ink on paper
335 x 240 mm



Sadao Hasegawa, Untitled, n.d.
Acrylic on canvas
410 x 320 mm

GALERIE PEPE

Galerie Pepe is pleased to present **Echoes of Mishima** a three-person exhibition of Japanese artists **Go Mishima, Sadao Hasegawa and Tamotsu Yato**. September 21st - November 4th, 2023

LIST OF WORKS:



Go Mishima, Untitled , n.d.
Ink on paper
550 x 380 mm; Frame 750 x 580 x 35 mm



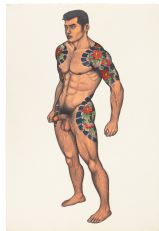
Go Mishima, Untitled , n.d.
Ink on paper
380 x 550 mm;
Frame 580 x 750 x 35 mm



Go Mishima, Untitled , n.d.
Ink on paper
550 x 380 mm; Frame 750 x 580 x 35 mm



Go Mishima, Untitled , n.d.
Ink on paper
380 x 550 mm;
Frame 580 x 750 x 35 mm



Go Mishima, Untitled , n.d.
Ink on paper
550 x 380 mm; Frame 750 x 580 x 35 mm



Sadao Hasegawa, Untitled, n.d.
Pencil and ink on paper
236 x 260 mm



Go Mishima, Untitled , n.d.
Ink on paper
550 x 380 mm; Frame 750 x 580 x 35 mm



Go Mishima, Untitled, n.d.
Ink on paper
324 x 224 mm; Frame
465 x 370 x 35 mm



Go Mishima, Untitled , n.d.
Ink on paper
550 x 380 mm; Frame 750 x 580 x 35 mm



Sadao Hasegawa, Untitled, 1998
Pencil and ink on paper
235 x 225 mm



Go Mishima, Untitled , n.d.
Ink on paper
550 x 380 mm; Frame 750 x 580 x 35 mm



Go Mishima, Untitled, n.d.
Ink on paper
350 x 250 mm;
Frame 465 x 370 x 35 mm

GALERIE PEPE

Galerie Pepe is pleased to present **Echoes of Mishima** a three-person exhibition of Japanese artists **Go Mishima, Sadao Hasegawa and Tamotsu Yato**. September 21st - November 4th, 2023

LIST OF WORKS:



Tamotsu Yato, Untitled , n.d.
7 Gelatin prints
Frame 372 x 803 x 30 mm



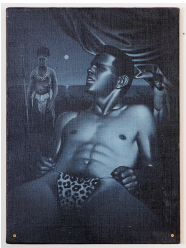
Sadao Hasegawa, Untitled , n.d.
Acrylic on canvas
455 x 335 mm



Go Mishima, Untitled , n.d.
Ink on paper
380 x 550 mm;
Frame 580 x 750 x 35 mm



Go Mishima, Untitled , n.d.
Ink on paper
380 x 550 mm;
Frame 580 x 750 x 35 mm

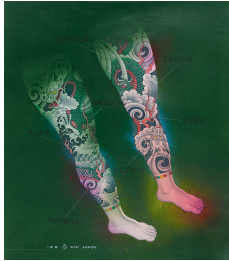


Sadao Hasegawa, Untitled , n.d.
Acrylic on canvas
455 x 355 mm

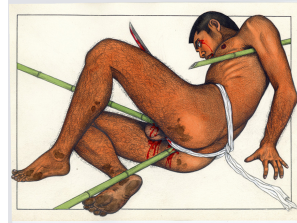
GALERIE PEPE

Galerie Pepe is pleased to present **Echoes of Mishima** a three-person exhibition of Japanese artists **Go Mishima, Sadao Hasegawa and Tamotsu Yato**. September 21st - November 4th, 2023

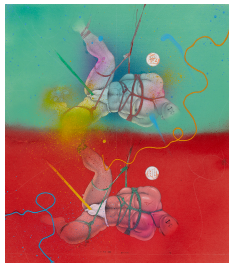
LIST OF WORKS:



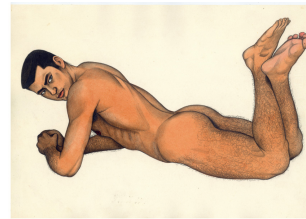
Sadao Hasegawa, *Untitled*, 1985
Pencil and ink on paper
540 x 475 mm;
Frame 595 x 530 x 10 mm



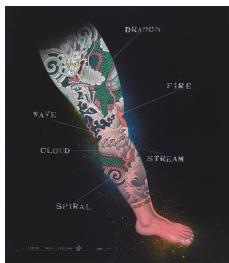
Go Mishima, *Untitled*, n.d.
Ink on paper
262 x 357 mm;
Frame 370 x 465 x 35 mm



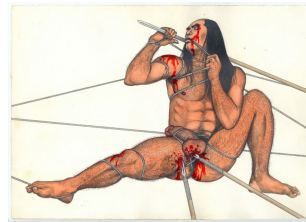
Sadao Hasegawa, *Untitled*, 1985
Pencil and ink on paper
540 x 475 mm;
Frame 595 x 530 x 10 mm



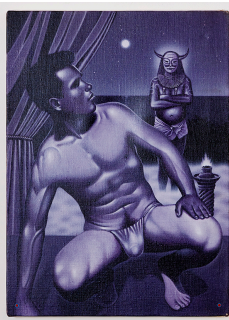
Go Mishima, *Untitled*, n.d.
Ink on paper
262 x 357 mm;
Frame 370 x 465 x 35 mm



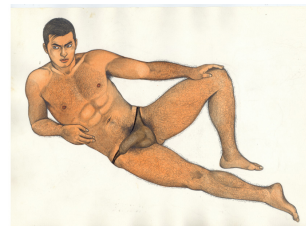
Sadao Hasegawa, *Untitled*, 1985
Pencil and ink on paper
540 x 475 mm;
Frame 595 x 530 x 10 mm



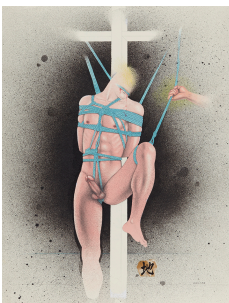
Go Mishima, *Untitled*, n.d.
Ink on paper
262 x 357 mm;
Frame 370 x 465 x 35 mm



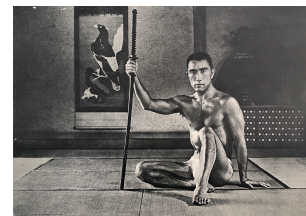
Sadao Hasegawa, *Untitled*, n.d.
Acrylic on canvas
455 x 335 mm



Go Mishima, *Untitled*, n.d.
Ink on paper
262 x 357 mm;
Frame 370 x 465 x 35 mm



Sadao Hasegawa, *Untitled*, 1981
Pencil and ink on paper
Tryptich
410 x 330 mm each;
Frame 465 x 385 x 10 mm each



Tamotsu Yato
Yukio Mishima, 1967
Poster print on board
1028 x 716 mm