

CALLA HENKEL & MAX PITEGOFF
Signs of Wear

November 12 – December 17, 2023

Made in the dustbowl of American storytelling, this is a post-strike pre-deal assemblage of images. *Episode 1* is the first in a series of films made in and around New Theater Hollywood, the theater Calla Henkel and Max Pitegoff are opening in Los Angeles. Part long form poetry, part docufiction, the film places the viewer in the position of the protagonist who, upon being hit by a bus and receiving a windfall by way of a settlement from the city of Los Angeles, decides to open a theater. The subtitled narrative plays over shots of acting studios just after class ends, and a roving circle of chairs staking public space. The film is displayed on a counter taken from the backstage of the black box theater on Santa Monica Boulevard and Wilcox Avenue which will house New Theater Hollywood.

Alongside the film are photographs of damage, a type of image-making in the service of value assessment. Car hoods rendered like water lilies, borrowing the format of the photographs demanded by insurance providers – metal undulating in the grating sun, violence revealing softness. Cause and effect, performance and photography. Likewise, the empty interiors of handbags, vulgar and functional, are spread open to reveal signs of wear. When selling a bag online, there is always this image, a Chaplinesque cheap gag: empty pockets in black and white, hands parting folds, making the personal public, extracting value from what is left.

Score of *Episode 1* by M. K. Frøslev.

With thanks to Alexa Karolinski, Tati Bruening, Karen Roth, Georgia Ford, Designer Revival, M. K. Frøslev, Stella Adler Academy of Acting and Theatre, Elizabeth Mestnik Acting Studio, Margie Haber Acting Studio, and Alan Feinstein Acting Studio.

1. Calla Henkel & Max Pitegoff

Documentation (Car 1)

2023

c-print

97.79 x 121.92 cm; 38 1/2 x 48 in



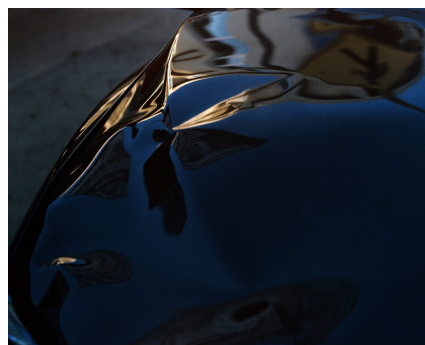
2. Calla Henkel & Max Pitegoff

Documentation (Car 2)

2023

c-print

97.79 x 121.92 cm; 38 1/2 x 48 in



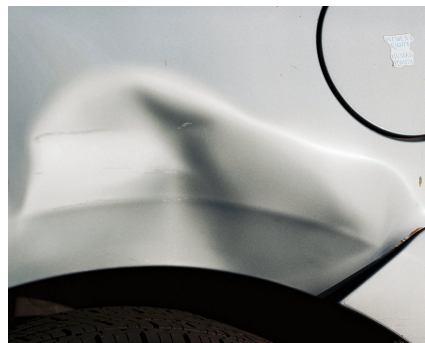
3. Calla Henkel & Max Pitegoff

Documentation (Car 3)

2023

c-print

97.79 x 121.92 cm; 38 1/2 x 48 in



4. Calla Henkel & Max Pitegoff

Documentation (Car 4)

2023

c-print

97.79 x 121.92 cm; 38 1/2 x 48 in



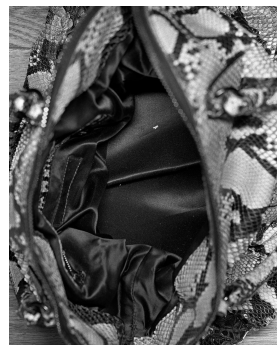
5. Calla Henkel & Max Pitegoff

Documentation (Bag 1)

2023

gelatin silver print

40.64 x 32.38 cm; 16 x 12 3/4 in



6. Calla Henkel & Max Pitegoff

Documentation (Bag 2)

2023

gelatin silver print

40.64 x 32.38 cm; 16 x 12 3/4 in



7. Calla Henkel & Max Pitegoff

Documentation (Bag 3)

2023

gelatin silver print

40.64 x 32.38 cm; 16 x 12 3/4 in



8. Calla Henkel & Max Pitegoff

Documentation (Bag 4)

2023

gelatin silver print

40.64 x 32.38 cm; 16 x 12 3/4 in



9. Calla Henkel & Max Pitegoff

Documentation (Bag 5)

2023

gelatin silver print

40.64 x 32.38 cm; 16 x 12 3/4 in



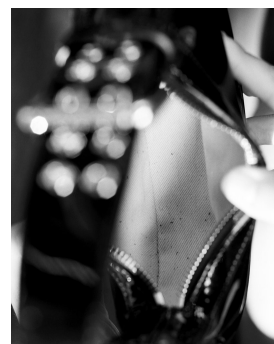
10. Calla Henkel & Max Pitegoff

Documentation (Bag 6)

2023

gelatin silver print

40.64 x 32.38 cm; 16 x 12 3/4 in



11. Calla Henkel & Max Pitegoff

Documentation (Bag 7)

2023

gelatin silver print

40.64 x 32.38 cm; 16 x 12 3/4 in



12. Calla Henkel & Max Pitegoff

Documentation (Bag 8)

2023

gelatin silver print

40.64 x 32.38 cm; 16 x 12 3/4 in



REENA SPAILINGS FINE ART
165 EAST BROADWAY
NEW YORK, NY 10002

13. Calla Henkel & Max Pitegoff

Episode 1

2023

16mm film transferred to HD video

10:00min

