

GRAHAM LITTLE

18 November - 22 December, 2023



GRAHAM LITTLE

18 November - 22 December, 2023

Press Release

dépendance is pleased to present Graham Little's first solo exhibition at the gallery.

The exhibition presents eight delicate gouaches that place lone characters within intimate spaces. The works function as enigmatic and captivating dioramas that represent a deep exploration of potentiality and memory. Little's subjects are not merely passive sitters; they are active participants in the creation of their own image. The majority of Little's characters are sourced from fashion magazines from the 1970s and 1980s. Little questions their potential, their needs and what they might be thinking in their staged environment. He immerses himself in their suspended world.

In the works presented, Little often includes apertures. They can serve as a visual gateway out of the diorama, offering his subjects a glimpse into alternate worlds and perspectives. The windows not only play with the principles of perspective and illusion but also convey the human experience in a way that seems to transcend the painting. Whether they symbolize isolation, hope, or the intricacies of human perception, they function as portals through which we explore the intricate interplay between the inside and the outside world.

Little evokes a psychological depth in his subjects. Figures are portrayed in scenes that may appear simple on the surface, but they are rich in emotional complexity. In *Untitled (Mother and Child)*, for instance, the positioning of the mother and her child, alongside the open window, creates a sense of intimacy and connection. The composition suggests a moment of shared emotion between the two figures. Little's attention to objects, set and figure arrangement, cropping, and lighting creates a dynamic tension that draws the viewer into the ungraspable narrative. The meticulous rendering of textures

and objects adds a layer of symbolism to the works. In *Untitled (Ball)*, the depiction of the performer's task of picking up the fabric is imbued with a sense of dedication and concentration. Little conscientiously arranges elements within his compositions to direct the viewer's gaze. In *Untitled (Boutique)*, the placement of the hot pink hands of the mannequins, the sweeping movements of the fabric, or the unfolded sweater all become visual cues within a work that captures the qualities of memory and nostalgia.

In his recent work, Little is making references to compositional strategies of modernist abstraction. The way he divides the picture plane into monochromatic areas in *Untitled (Mother and Child)* creates a tension or mood that can be associated with Moholy-Nagy or Rothko, while the girl hanging the black on white textile in the mountain hut in *Untitled (Mountain Top)* can be seen as a negotiation with Malevich.

Graham Little (1972, Dundee, UK) lives and works in London. He received a BA in Fine Arts at Duncan of Jordanstone College of Art & Design, Dundee and an MA from Goldsmiths College, London. His work has been presented at Camden Arts Centre, London; Hayward Gallery, London; MoMA PS1, New York; V&A, Dundee and Kunstmuseum, Bochum; Taka Ishii Gallery, Tokyo; Alison Jacques Gallery, London amongst others. Little's work is held in the permanent collections of the British Council, London; Hammer Museum, Los Angeles; MoMA, New York and Los Angeles Museum of Contemporary Art, Los Angeles.





dépendance



Graham Little
Untitled (Ball)

2023

gouache on paper, linen, framed

64.5 x 70.3 x 4 cm / 25.39 x 27.68 x 1,58 in (framed)

33.5 x 42 cm / 13.18 x 16.53 in (unframed)

DEP-GL-0006

HR Image:

<https://www.dropbox.com/scl/fi/73cenggunzr6eut9gi0az/DEP-GL-0006.tif?rlkey=xenoy87ahp1llhqi3ros52agr&dl=0>







dépendance

Graham Little
Untitled (Boutique)

2023

gouache on paper, linen, framed

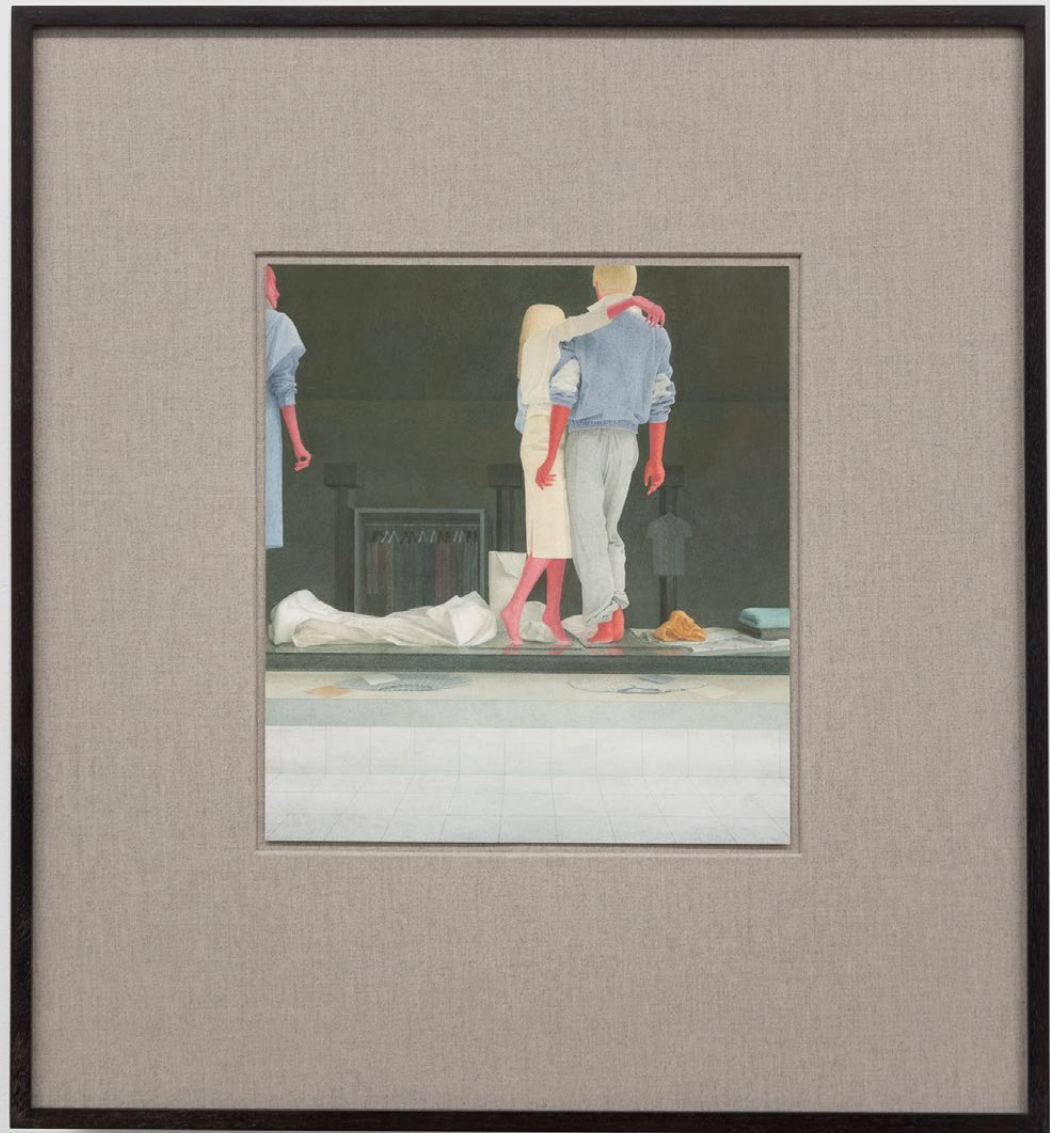
79.5 x 68,5 x 4 cm / 31 1/4 x 27 x 1,58 in (framed)

32 x 29 cm / 12.59 x 11.41 in (unframed)

DEP-GL-0007

HR Image:

<https://www.dropbox.com/scl/fi/h55zmgka9m6bsl6wbou/DEP-GL-0007.tif?rlkey=8lm73s0ccsyurnht1vs1qe qjj&dl=0>











dépendance

**Graham Little
Untitled (Squirrel)**

2021

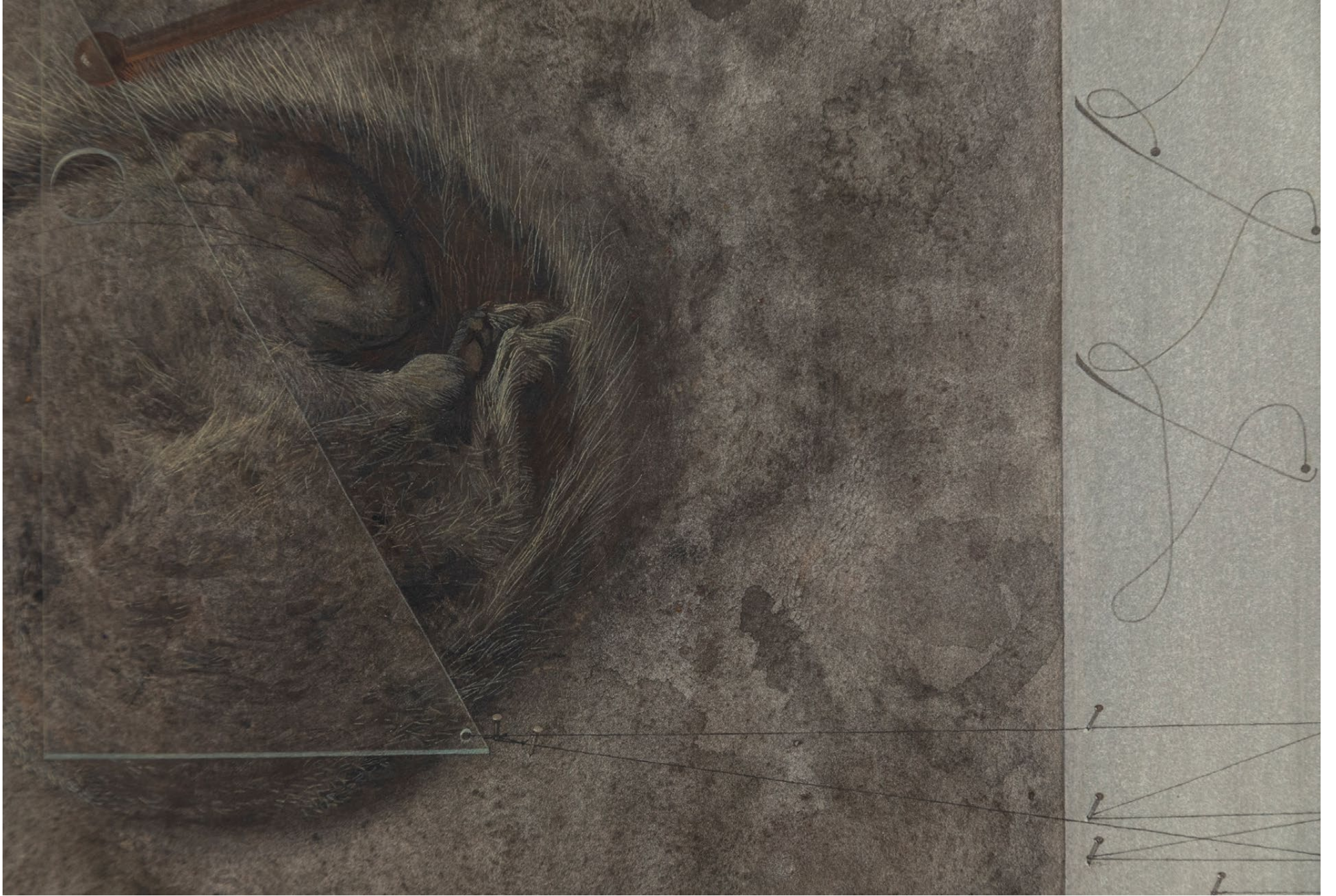
gouache on paper, framed with linen
63,5 x 59,5 x 4 cm / 25 x 23 3/8 x 1,58 in (framed)
33 x 30 cm / 12.99 x 11.81 in (unframed)
DEP-GL-0004

HR Image:

<https://www.dropbox.com/scl/fi/l4hw36eaxlcwn9gyw4vix/DEP-GL-0004.tif?rlkey=cdfouy8cd9n4kqgtywb0to261&dl=0>









dépendance

Graham Little
Untitled (Mother and Child)

2023

gouache on paper, linen, framed

68.5 x 79.5 x 4 cm / 27 x 31 1/4 x 1,58 in (framed)

33 x 41 cm / 12.99 x 16.14 in (unframed)

DEP-GL-0005

HR Image:

<https://www.dropbox.com/scl/fi/78ywg0s316r2nba8kplqq/DEP-GL-0005.tif?rlkey=l9gryt9ycra5ug3i223g4yek2&dl=0>













dépendance



Graham Little
Untitled (Arch)

2023

gouache on paper, linen, framed

44.6 x 38.7 cm / 17.56 x 15.24 in (unframed)

75 x 67 cm / 29.52 x 26.37 in (framed)

DEP-GL-0009

price: 32.000,00 GBP (excl. VAT)

HR Image:

<https://www.dropbox.com/scl/fo/j8o5840y1zl2yftyz2p1d/h?rlkey=yv678exqjc0le9jrkelpf4an&dl=0>







dépendance

Graham Little
Untitled (Woods)

2023

gouache on paper, linen, framed

78 x 64,5 x 4 cm / 30,71 x 25,39 x 1,58 in (framed)

47 x 36 cm / 18.5 x 14.17 in (unframed)

DEP-GL-0008

HR Image:

<https://www.dropbox.com/scl/fi/tnzmlkt7jjs9xvgiheiq/DEP-GL-0008.tif?rlkey=l38s2websliw3oqycpda3ntg8&dl=0>











dépendance

Graham Little
Untitled (Mountain Top)

2023

gouache on paper, linen, framed

52,5 x 51,5 x 4 cm / 20,67 x 20,28 x 1,58 in (framed)

22 x 23 cm / 8.66 x 9.05 in (unframed)

DEP-GL-0010

HR Image:

<https://www.dropbox.com/scl/fi/bn49bf3fetezvht8cn7i/DEP-GL-0010.tif?rlkey=b7j0chh83bumc93l6fu0mq2ey&dl=0>







dépendance

Graham Little
Untitled (Patio)

2023

gouache on paper, linen, framed

63 x 59,5 x 4 cm / 24,80 x 23.43 x 1,58 in (framed)

32.5 x 31.5 cm / 12.8 x 12.4 in (unframed)

DEP-GL-0011

HR Image:

<https://www.dropbox.com/scl/fo/wa2jcy6pg0fiarp5kqhve/h?rlkey=c647foxummoqnx9kjjyaseb5qu&dl=0>







dépendance

4 rue du marché aux porcs
1000 brussels, belgium

Wed–Fri, 2 – 6 pm
Sat, 12 – 6 pm

tel. .32 .2 217 74 00
www.dependance.be
info@dependance.be

Upcoming Exhibitions

CAREFULLY UNPLANNED

30 November, 2023 - 12 January, 2024

WILL BENEDICT

03.02 – 23.03.2024

dépendance

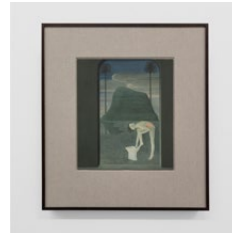
GRAHAM LITTLE

18 November - 22 December, 2023



**Graham Little
Untitled (Ball)**

2023
gouache on paper, linen, framed
64.5 x 70.3 x 4 cm / 25.39 x 27.68 x 1,58 in (framed)
33.5 x 42 cm / 13.18 x 16.53 in (unframed)
DEP-GL-0006



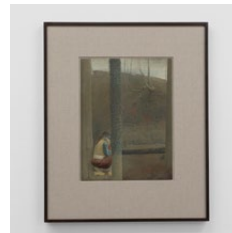
**Graham Little
Untitled (Arch)**

2023
gouache on paper, linen, framed
75 x 67 x 4 cm / 29.52 x 26.37 x 1,58 in (framed)
44.6 x 38.7 cm / 17.56 x 15.24 in (unframed)
DEP-GL-0009



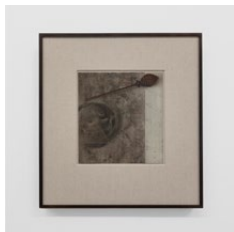
**Graham Little
Untitled (Boutique)**

2023
gouache on paper, linen, framed
79.5 x 68,5 x 4 cm / 31 1/4 x 27 x 1,58 in (framed)
32 x 29 cm / 12.59 x 11.41 in (unframed)
DEP-GL-0007



**Graham Little
Untitled (Woods)**

2023
gouache on paper, linen, framed
78 x 64,5 x 4 cm / 30,71 x 25,39 x 1,58 in (framed)
47 x 36 cm / 18.5 x 14.17 in (unframed)
DEP-GL-0008



**Graham Little
Untitled (Squirrel)**

2021
gouache on paper, framed with linen
63,5 x 59,5 x 4 cm / 25 x 23 3/8 x 1,58 in (framed)
33 x 30 cm / 12.99 x 11.81 in (unframed)
DEP-GL-0004



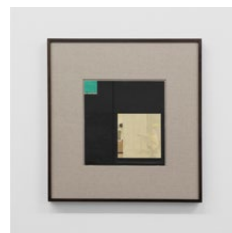
**Graham Little
Untitled (Mountain Top)**

2023
gouache on paper, linen, framed
52,5 x 51,5 x 4 cm / 20,67 x 20,28 x 1,58 in (framed)
22 x 23 cm / 8.66 x 9.05 in (unframed)
DEP-GL-0010



**Graham Little
Untitled (Mother and Child)**

2023
gouache on paper, linen, framed
68.5 x 79.5 x 4 cm / 27 x 31 1/4 x 1,58 in (framed)
33 x 41 cm / 12.99 x 16.14 in (unframed)
DEP-GL-0005



**Graham Little
Untitled (Patio)**

2023
gouache on paper, linen, framed
63 x 59,5 x 4 cm / 24,80 x 23.43 x 1,58 in (framed)
32.5 x 31.5 cm / 12.8 x 12.4 in (unframed)
DEP-GL-0011