

# dépendance

**KATJA SEIB**

THE SOFTEST PAIN IS  
THE PAIN AU CHOCOLAT

7 September - 28 October, 2023

**KATJA SEIB**  
THE SOFTEST PAIN IS  
THE PAIN AU CHOCOLAT

7 September - 28 October, 2023

## Press Release

dépendance is pleased to present 'The Softest Pain is the Pain au Chocolat', Katja Seib's second solo exhibition at the gallery.

Employing common systems of semiotics and symbolism, Seib's work is loaded with various kinds of symbols and signs. Over the years, Seib's narrative approach to painting has become increasingly autobiographical focused. Her strong affinity for classical portraiture is activated by particular interpretations of her daily surroundings. The artist desires to convey intimate experiences without being too revealing and, at the same time, allowing the audience to know her feelings.

Her focused painterly technique of contrasting pictorial elements echoes this lively gracefulness. Central subjects are meticulously painted with nearly invisible softened brushstrokes. This is combined with surroundings composed of a rapid flow and prompt wet technique. In addition, she wants to go beyond the painting itself by adding different materials, such as the woven spider's web, made in collaboration with her mother, that emphasizes how everything she does is made by hand.

She depicts interpersonal relations, seeking common grounds with the viewer, and most of all, shared experiences of women specifically. While we see many paintings of women and mothers, Seib paints a more private story in *Postpartum* and presents a scene we rarely see. This narrative is intertwined with metaphoric elements, including the parent walking with the child in the background.

In her paintings, the artist interweaves art historical and mythological references. The self-portrait *Athena* presents Seib against the background of not only the Greek goddess Athena

as her alter-ego but also Edgar Degas's depictions of female bathers produced from the late 1870s to the 1890s. An image of a pantless girl as a modern-day bather appears in *Athena* and other works. It goes back to a scandalous American Apparel advertisement that was all over Los Angeles in the early 2000s. It got covered up as it went against American standards regarding nudity. With its inclusion, Seib is commenting on the double standards of a society that covers up nakedness, one of the purest humanistic things.

Motifs such as Eve, the snake, and the apple appear in her work. Seib looks at how history has shaped female representation within a misogynistic world. Eve is seemingly made out of the rib of Adam, depriving women of their own real identity. As a counterweight, she uses the witch as a symbol of female empowerment, represented by her attribute: the cat. Next to this, little gleaming gemstones reappear throughout her oeuvre as colorful teardrops, sparks, or just decorative elements. They bestow the depicted scenes, portraits, or still lives with a particular delicacy.

The ceramic portraits link to the European history of wall plates. They served as a decorative object but more importantly as a symbol of prosperity and wealth. The characters in her new series of glazed porcelain are undeniably personal depictions of familiar faces.

Katja Seib (1989, Germany) studied at the Fine Art Academy of Düsseldorf. She currently lives and works in Los Angeles. Her work was part of *Made in L.A. 2020* at the Hammer Museum in Los Angeles. For its 2023–24 season, The Metropolitan Opera commissioned her to make the banner for the opera *Dead Man Walking*.





# dépendance



**Katja Seib**

**Eva 1**

2023

glazed porcelain

24.1 x 24.1 x 3.8 cm

9 ½ x 9 ½ x 1 ½ in

DEP-KS-0025

HR Image:

<https://www.dropbox.com/scl/fi/7dyysi2bozziwf2v9bnex/DEP-KS-0025.tif?rlkey=kt5d27x6yrfusq7a0lz4vbum8&dl=0>

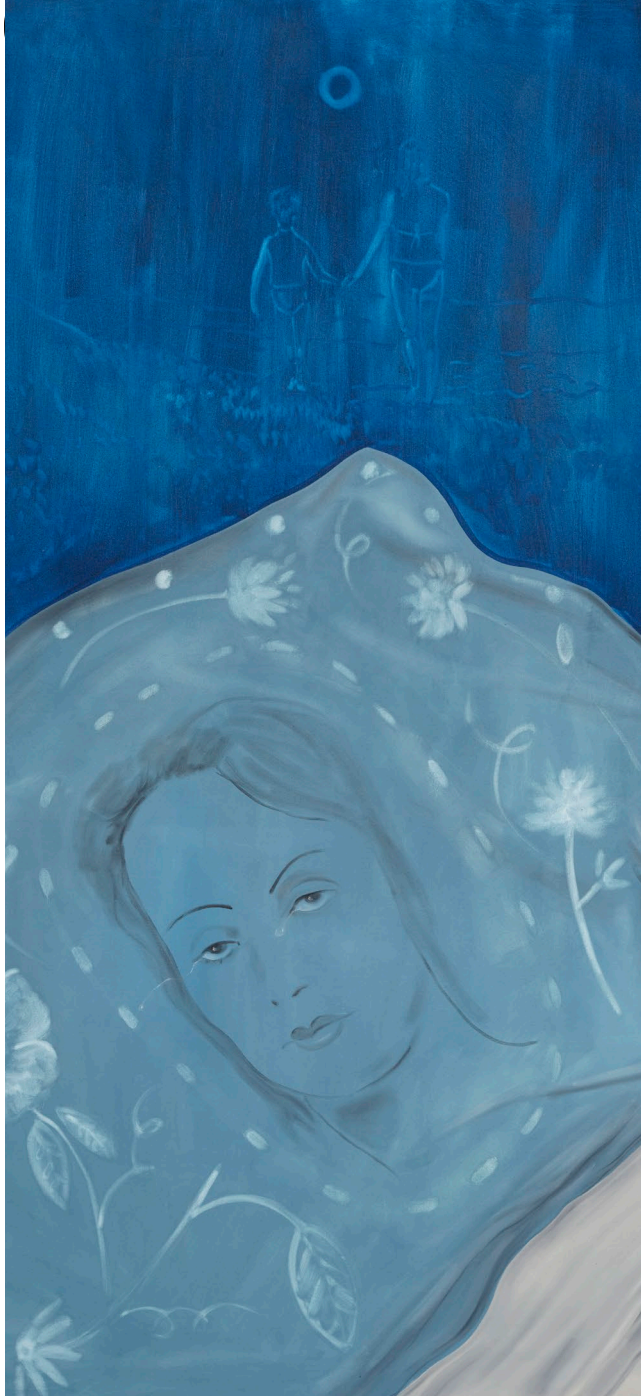


# dépendance



**Katja Seib**  
**Postpartum**  
2023  
oil on canvas  
218.4 x 335.28 x 3.8 cm  
86 x 132 x 1 ½ in  
DEP-KS-0020

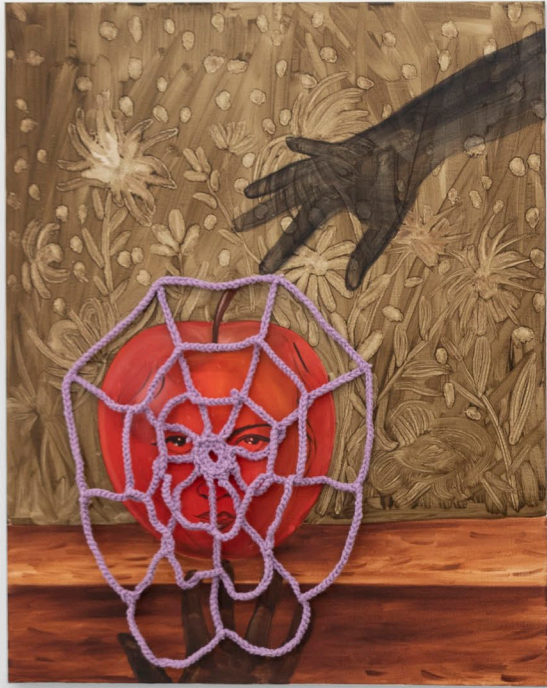
HR Image:  
<https://www.dropbox.com/scl/fi/hvha4lvh2ffkq02aimq63/DEP-KS-0020.tif?rlkey=gsa62vkd29h9jyb7gkqju2s88&dl=0>











# dépendance

**Katja Sei**  
**Mit dem Herzen denken**  
2023  
oil on linen, wool  
76.2 x 61 x 1.9 cm  
30 x 24 x ¾ in  
DEP-KS-0024

HR Image:  
<https://www.dropbox.com/scl/fi/94eczn743hrf722re4cd/DEP-KS-0024.tif?rlkey=exa4inis557d1k7n9adkdsnw5&dl=0>

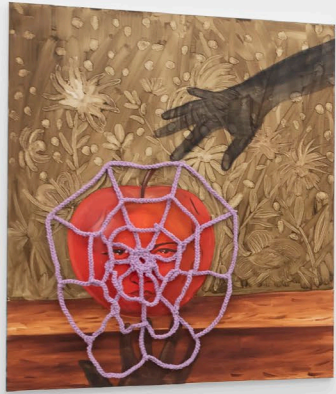


# dépendance



**Katja Seib**  
**Mit dem Herzen denken 2**  
2023  
oil on linen  
61 x 76.2 x 1.9 cm  
24 x 30 x ¾ in  
DEP-KS-0023

HR Image:  
<https://www.dropbox.com/scl/fi/39fzcemiwic09rpgq1eku/DEP-KS-0023.tif?rlkey=yam9ziv5ay8k1jzo1icwnmeq8&dl=0>





# dépendance

**Katja Seib**  
**Athena**  
2023  
oil on canvas  
243.8 x 182.9 x 3.8 cm  
96 x 72 x 1 ½ in  
DEP-KS-0022

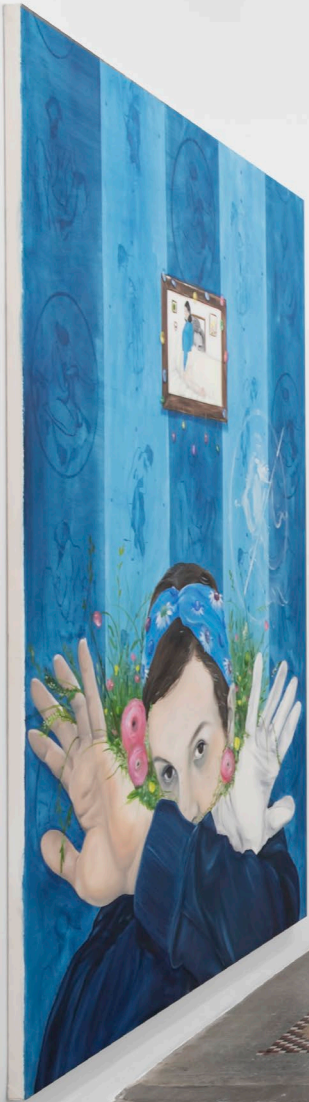
HR Image:  
<https://www.dropbox.com/scl/fo/0wf9cmr24ddt5arl1d88y/h?rlkey=0gdv7be8y4lhx2gfskolyq7am&dl=0>













# dépendance

**Katja Seib**  
**LA gallerist**  
2023  
oil on canvas  
218.4 x 167.6 x 3.8 cm  
86 x 66 x 1 ½ in  
DEP-KS-0021

HR Image:  
<https://www.dropbox.com/scl/fi/vh7wkfw6iuka1r3vuiaino/DEP-KS-0021.tif?rlkey=3q6gviisw81kq5os92okdzkc6&dl=0>



# dépendance

**Katja Seib**  
**LA gallerist**  
2023  
oil on canvas  
218.4 x 167.6 x 3.8 cm  
86 x 66 x 1 ½ in  
DEP-KS-0021

HR Image:  
<https://www.dropbox.com/scl/fi/vh7wkfw6iuka1r3vuiain/DEP-KS-0021.tif?rlkey=3q6gviisw81kq5os92okdzkc6&dl=0>















# dépendance



**Katja Seib**  
**Leo**  
2023  
glazed porcelain  
24.1 x 24.1 x 3.8 cm  
9 ½ x 9 ½ x 1 ½ in  
DEP-KS-0026

HR Image:  
<https://www.dropbox.com/scl/fi/gd9u2668jz06clrb6f89h/DEP-KS-0026.tif?rlkey=m4qv3glqzmimg0o7c6tr4f676&dl=0>

# dépendance



**Katja Seib  
Scott**  
2023  
glazed porcelain  
24.1 x 24.1 x 3.8 cm  
9 ½ x 9 ½ x 1 ½ in  
DEP-KS-0031

HR Image:  
[https://www.dropbox.com/scl/fi/3vbdwy63m2p1k5wlmz865/  
DEP-KS-0031.tif?rlkey=yur1ao5q4jikiu79lcz569fc7&dl=0](https://www.dropbox.com/scl/fi/3vbdwy63m2p1k5wlmz865/DEP-KS-0031.tif?rlkey=yur1ao5q4jikiu79lcz569fc7&dl=0)

# dépendance



**Katja Seib**

**Eva 2**

2023

glazed porcelain

24.1 x 24.1 x 3.8 cm

9 ½ x 9 ½ x 1 ½ in

DEP-KS-0030

HR Image:

<https://www.dropbox.com/scl/fi/3289tp6ozckwyn4gt8try/DEP-KS-0030.tif?rlkey=s1gop7swpc2xyuuy84r8ffd6q&dl=0>

# dépendance



**Katja Seib**  
**Schwarze Katze**  
2023  
glazed porcelain  
24.1 x 24.1 x 3.8 cm  
9 ½ x 9 ½ x 1 ½ in  
DEP-KS-0029

HR Image:  
<https://www.dropbox.com/scl/fi/codcv6fzu5h3lm7dejefq/DEP-KS-0029.tif?rlkey=o4srsiwuud2a6e3l5l4hejj8r&dl=0>

# dépendance



**Katja Seib**  
**Vanessa 1**  
2023  
glazed porcelain  
43.2 x 20.3 x 0.6 cm  
17 x 8 x ¼ in  
DEP-KS-0034

HR Image:  
<https://www.dropbox.com/scl/fi/hvuhsbgntn0x79v2uocl7/DEP-KS-0034.tif?rlkey=fctcwoz514gfb8mb9dys6ebji&dl=0>



# dépendance



**Katja Seib**

**Eric**

2023

glazed porcelain

24.1 x 24.1 x 3.8 cm

9 ½ x 9 ½ x 1 ½ in

DEP-KS-0028

HR Image:

<https://www.dropbox.com/scl/fi/4o4m6dr4jt07om1u40m5y/DEP-KS-0028.tif?rlkey=hcttutat9naeqtvnfu4t00an4&dl=0>

dépendance



**Katja Seib**

**Vanessa 2**

2023

glazed porcelain

22.9 x 21.6 x 3.8 cm

9 x 8 ½ x 1 ½ in

DEP-KS-0027

HR Image:

<https://www.dropbox.com/scl/fo/b09nn7lein9ufxlrbf1km/DEP-KS-0027.tif?rlkey=orc7h93vdy0o3x9jakcr5luve&dl=0>

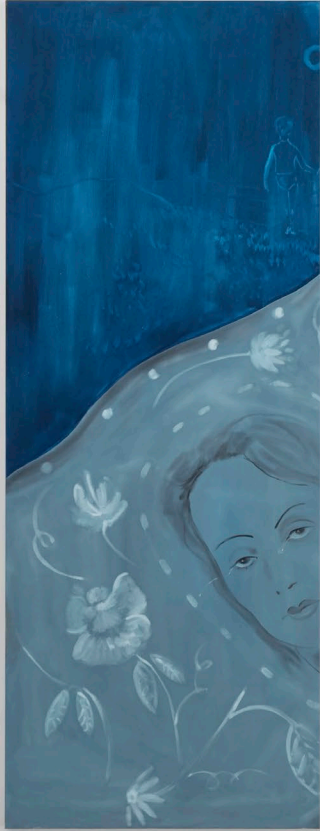
# dépendance



**Katja Seib**  
**Elke**  
2023  
glazed porcelain  
24.1 x 24.1 x 3.8 cm  
9 ½ x 9 ½ x 1 ½ in  
DEP-KS-0033

HR Image:  
<https://www.dropbox.com/scl/fi/4tjl3qpsosbgha2i8l19f/DEP-KS-0033.tif?rlkey=iew8q08yq8rcb80q06ms7exhg&dl=0>





dépendance

4 rue du marché aux porcs  
1000 brussels, belgium

Wed–Fri, 2 – 6 pm  
Sat, 12 – 6 pm

tel. +32 .2 217 74 00  
www. dependance.be  
info@dependance.be

Current Exhibition

**KATJA SEIB**  
THE SOFTEST PAIN IS  
THE PAIN AU CHOCOLAT  
7.09 – 28.10.2023

Upcoming Exhibitions

**GRAHAM LITTLE**  
18.11 – 22.12.2023

Upcoming Fairs

**PARIS+ PAR ART BASEL**  
18.10 – 22.10.2023

**FRIEZE, LONDON**  
11.10 – 15.10.2023