

## A Greater Beauty: The Drawings of Kahlil Gibran

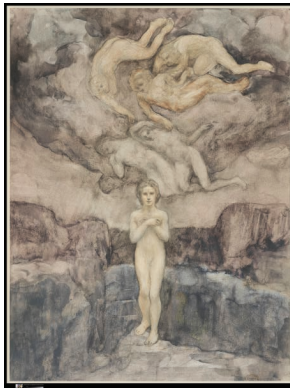
June 2 – September 10, 2023

For further information and images, please contact

Allison Underwood, Director of Communications

212 219 2166 x119 | [aunderwood@drawingcenter.org](mailto:aunderwood@drawingcenter.org)

All works by Kahlil Gibran unless otherwise stated



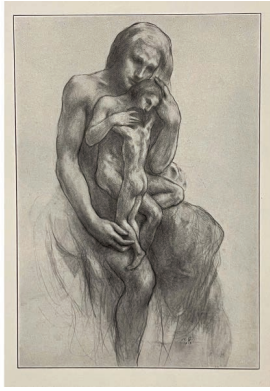
*I Have Come Down the Ages*, n.d.  
Watercolor and graphite on paper  
14 x 10 1/2 inches (35.6 x 26.7 cm)  
The Metropolitan Museum of Art, Gift of  
Mrs. Mary H. Minis, 1932 (32.45.3)  
Image © The Metropolitan Museum of Art,  
Image source: Art Resource, NY



*The Mountain*, c. 1916  
Wash drawing  
9 7/8 x 7 7/8 inches (25 x 20 cm)  
Gibran Khalil Gibran Museum, Courtesy of  
the Gibran National Committee



Proof of *The Mountain* for Twenty Drawings,  
n.d.  
Offset print  
11 x 8 1/4 inches (27.9 x 21 cm)  
Denenberg Fine Arts, Inc.

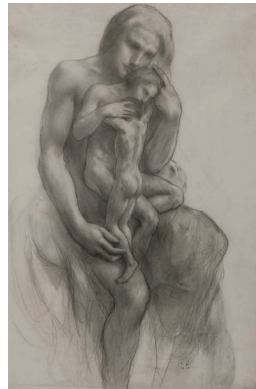


Proof of illustration for frontispiece of  
*The Madman*, c. 1918

Offset print

11 x 8 1/2 inches (27.9 x 21.6 cm)

Denenberg Fine Arts, Inc.



*The Three Are One*, 1918

Pencil on wove paper

22 1/4 x 15 inches (56.5 x 38.1 cm)

Telfair Museum of Art, Savannah,  
Georgia

Gift of Mary Haskell Minis, 1950.8.39

Photography by Daniel L. Grantham,  
Jr., Graphic Communication



*The Vision of Adam and Eve*, c. 1904

Red conté on wove paper

17 3/8 x 24 1/8 inches (44.1 x 61.3 cm)

Telfair Museum of Art, Savannah,  
Georgia

Gift of Mary Haskell Minis, 1950.8.16

Photography by Daniel L. Grantham,  
Jr., Graphic Communication



*Untitled*, before 1908

Charcoal on paper

7 3/4 x 10 inches (19.5 x 25.5 cm)

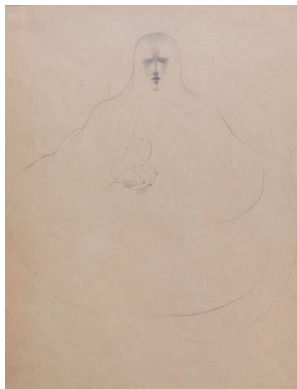
Gibran Khalil Gibran Museum,  
Courtesy of the Gibran National  
Committee



*Untitled, 1903*  
Conté crayon on paper  
15 1/4 x 16 1/2 inches (38.7 x 41.9 cm)  
Telfair Museum of Art, Savannah,  
Georgia  
Gift of Mary Haskell Minis. 1950.8.76  
Photography by Daniel L. Grantham,  
Jr., Graphic Communication



*Untitled, 1907*  
Pastel on paper  
15 7/8 x 11 3/8 inches (40.3 x 29 cm)  
Gibran Khalil Gibran Museum,  
Courtesy of the Gibran National  
Committee



Study of a figure with a flame, before  
1914  
Charcoal  
10 2/3 x 7 7/8 inches (27 x 20 cm)  
Gibran Khalil Gibran Museum,  
Courtesy of the Gibran National  
Committee



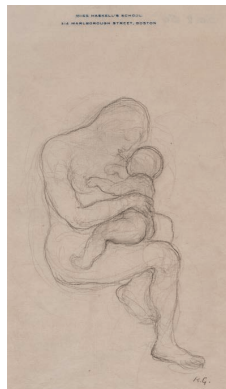
*The Flame of Life, c.1910*  
Watercolor  
6 2/3 x 5 1/8 inches (17x 13 cm)  
Gibran Khalil Gibran Museum,  
Courtesy of the Gibran National  
Committee



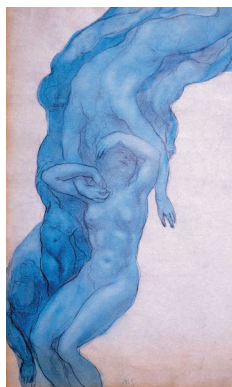
*Hand and Rose*, 1919  
Pencil 6 3/4 x 4 3/8 inches (17.3 x 11.2 cm)  
Gibran Khalil Gibran Museum,  
Courtesy of the Gibran National  
Committee



*The Greater Self*, 1916  
Watercolor and graphite on paper  
10 15/16 x 8 1/2 inches (27.8 x 21.6 cm)  
Telfair Museum of Art, Savannah,  
Georgia  
Museum purchase, 2008.9  
Photography by Daniel L. Grantham,  
Jr., Graphic Communication



*Untitled*, c. 1910-15  
Pencil on paper  
9 1/2 x 6 inches (23.2 x 15.2 cm)  
Telfair Museum of Art, Savannah,  
Georgia  
Gift of Mary Haskell Minis, 1950.8.50  
Photography by Daniel L. Grantham,  
Jr., Graphic Communication



*The Waterfall*, 1919  
Watercolor  
12 3/4 x 8 1/2 inches (32.5 x 21.5 cm)  
Gibran Khalil Gibran Museum,  
Courtesy of the Gibran National  
Committee



*Untitled*, 1914  
Charcoal  
11 x 8 1/2 inches (27.8 x 21.5 cm)  
Gibran Khalil Gibran Museum,  
Courtesy of the Gibran National  
Committee



*Untitled*, 1914  
Charcoal  
11 x 8 1/2 inches (28 x 21.5 cm)  
Gibran Khalil Gibran Museum,  
Courtesy of the Gibran National  
Committee



*Nude*, 1916  
Watercolor and graphite on paper  
8 1/4 x 5 3/8 inches (21 x 13.5 cm)  
Courtesy of Saleh Barakat Gallery



*Untitled*, 1916  
Pencil and watercolor on paper  
8 1/2 x 5 1/2 inches (21.6 x 14 cm)  
Museo Soumaya·Fundación Carlos Slim



*Untitled*, 1917-20  
Pencil with red wash on paper  
9 3/4 x 8 inches (24.8 x 20.3 cm)  
Telfair Museum of Art, Savannah,  
Georgia  
Gift of Mary Haskell Minis, 1950.8.78  
Photography by Daniel L. Grantham,  
Jr., Graphic Communication



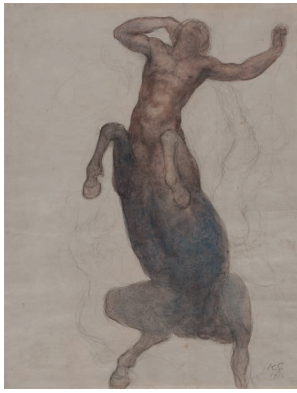
*Standing Figure and Child*, n.d.  
Pencil and watercolor on paper  
11 x 7 inches (27.94 X 17.78 cm)  
Courtesy of Barjeel Art Foundation,  
Sharjah  
Image courtesy of Barjeel Art  
Foundation, Sharjah



*Untitled*, c. 1900-31  
Pencil and watercolor on paper  
8 7/8 x 8 1/2 inches (22.5 x 21.7 cm)  
Museo Soumaya·Fundación Carlos Slim



*Man's Aspiration to Greatness*, 1914-20  
Watercolor  
8 1/2 x 8 1/2 inches (21.5 x 21.5 cm)  
Gibran Khalil Gibran Museum,  
Courtesy of the Gibran National  
Committee



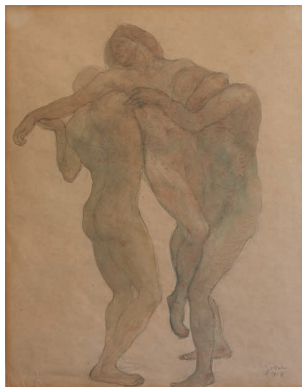
*The Great Longing*, 1916  
Watercolor and pencil on paper  
10 7/8 x 8 1/2 inches (27.6 x 21.6 cm)  
Telfair Museum of Art, Savannah,  
Georgia  
Gift of Mary Haskell Minis, 1950.8.19  
Photography by Daniel L. Grantham,  
Jr., Graphic Communication



*Uplifted Figure*, 1915  
Pencil and watercolor on paper  
10 7/8 x 8 3/8 inches (27.6 x 21.6 cm)  
Telfair Museum of Art, Savannah,  
Georgia  
Gift of Mary Haskell Minis, 1950.8.31  
Photography by Daniel L. Grantham,  
Jr., Graphic Communication



*Centaur, Woman, and Child*, 1916  
Watercolor and graphite on paper  
8 1/4 x 10 5/8 inches (21 x 27 cm)  
Courtesy of Saleh Barakat Gallery



*The Triangle*, 1918  
Wash drawing  
10 x 11 3/4 inches (25.3 x 30 cm)  
Gibran Khalil Gibran Museum,  
Courtesy of the Gibran National  
Committee



*Three Standing Figures*, n.d.  
Pencil on paper  
9 1/2 x 8 inches (24 x 20.3 cm)  
Courtesy of Barjeel Art Foundation,  
Sharjah  
Image courtesy of Barjeel Art  
Foundation, Sharjah



*Towards the Infinite*, 1916  
Watercolor and graphite on paper  
8 3/8 x 11 inches (21.3 x 27.9 cm)  
The Metropolitan Museum of Art, Gift  
of Mrs. Mary H. Minis, 1932 (32.45.4)  
Image © The Metropolitan Museum of  
Art, Image source: Art Resource, NY



Group of seven drawings framed  
together, n.d.  
Pencil and ink on paper  
Sizes various, together 19 2/3 x 19 2/3  
inches (50 x 50 cm)  
NABU Museum Collection



*Portrait*, 1917  
Graphite and watercolor on wove  
translucent paper adhered to cardstock  
support  
8 3/4 x 10 3/4 inches (22.1 x 27.5 cm)  
MS Am 1891.6 (Box 60: 76a), Houghton  
Library, Harvard University





*Head of a Child*, n.d.  
Pencil and watercolor  
7 1/2 x 11 inches (19 x 28 cm)  
Private collection



*Untitled (A Vestal)*, 1916  
Watercolor on paper  
11.7 x 8.7 in (29.6 x 22.2 cm)  
NABU Museum Collection



*Untitled*, 1916  
Watercolor  
8 1/2 x 11 inches (21.5 x 28 cm)  
Gibran Khalil Gibran Museum,  
Courtesy of the Gibran National  
Committee



*A Woman with a Blue Veil*, 1916  
Watercolor  
8 1/2 x 10 inches (21.5 x 25.3 cm)  
Gibran Khalil Gibran Museum,  
Courtesy of the Gibran National  
Committee



*The Mask*, c. 1910  
Watercolor  
12 3/4 x 9 1/2 inches (32.5 x 24 cm)  
Gibran Khalil Gibran Museum,  
Courtesy of the Gibran National  
Committee



*The Heavenly Mother*, 1920  
Pencil on wove paper  
22 1/4 x 14 1/2 inches (56.5 x 36.8 cm)  
Telfair Museum of Art, Savannah,  
Georgia  
Gift of Mary Haskell Minis, 1950.8.21  
Photography by Daniel L. Grantham,  
Jr., Graphic Communication



*The Dying Man and the Vulture*, 1920  
Pencil on paper  
22 x 16 3/4 inches (55.9 x 42.5 cm)  
Telfair Museum of Art, Savannah,  
Georgia  
Gift of Mary Haskell Minis, 1950.8.40  
Photography by Daniel L. Grantham,  
Jr., Graphic Communication



*Spirit of Light or Spiritual Communion*,  
1921  
Watercolor and pencil on paper  
11 x 8 inches (27.9 x 20.3 cm)  
Telfair Museum of Art, Savannah,  
Georgia  
Gift of Mary Haskell Minis, 1950.8.8  
Photography by Daniel L. Grantham,  
Jr., Graphic Communication



*Rocky Shoreline*, n.d.  
Pencil and watercolor on thin paper  
7 7/8 x 7 7/8 inches (20 x 20 cm)  
NABU Museum Collection



*Untitled*, 1921  
Watercolor and pencil on paper  
5 x 6 inches (12.7 x 15.2 cm)  
Telfair Museum of Art, Savannah,  
Georgia  
Gift of Mary Haskell Minis, 1950.8.57  
Photography by Daniel L. Grantham,  
Jr., Graphic Communication



*Reclining Nudes*, 1925  
Graphite and watercolor on thin paper  
(watermarked "Bond")  
7 3/4 x 9 3/4 (19 x 25 cm)  
NABU Museum Collection



*The Gift*, 1923  
Watercolor  
13 x 10 inches (33 x 25.5 cm)  
Gibran Khalil Gibran Museum,  
Courtesy of the Gibran National  
Committee

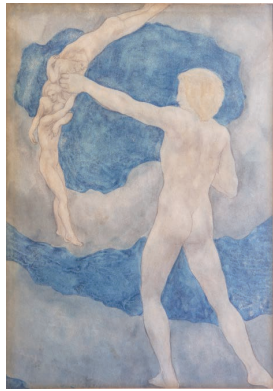


*The Triad- Being Descending Towards the Mother Sea, 1923*

Watercolor

11 x 8 1/2 inches (28 x 21.5 cm)

Gibran Khalil Gibran Museum,  
Courtesy of the Gibran National  
Committee

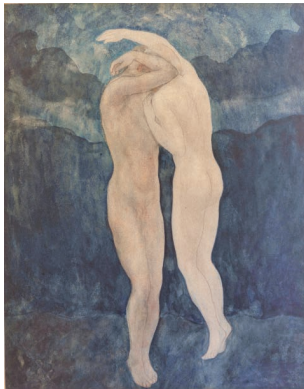


*The Archer, 1923*

Watercolor

11 x 8 1/2 inches (28 x 21.5 cm)

Gibran Khalil Gibran Museum,  
Courtesy of the Gibran National  
Committee



*Love, 1923*

Watercolor

11 x 8 1/2 inches (28 x 21.5 cm)

Gibran Khalil Gibran Museum,  
Courtesy of the Gibran National  
Committee



*The Divine World, 1923*

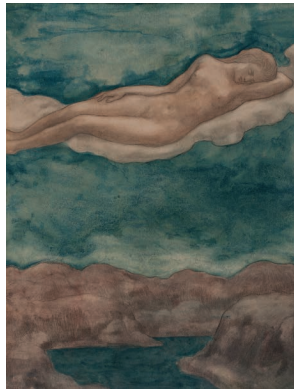
Charcoal

11 x 8 1/2 inches (28 x 21.6 cm)

Gibran Khalil Gibran Museum,  
Courtesy of the Gibran National  
Committee



*The Summit*, c. 1925  
Watercolor and pencil on paper  
11 x 8 1/2 inches (27.9 x 21.6 cm)  
Telfair Museum of Art, Savannah,  
Georgia  
Gift of Mary Haskell Minis, 1950.8.14  
Photography by Erwin Gaspin



*Untitled*, c. 1925  
Watercolor and pencil on paper  
11 x 8 1/2 inches (27.9 x 21.6 cm)  
Telfair Museum of Art, Savannah,  
Georgia  
Gift of Mary Haskell Minis, 1950.8.65  
Photography by Daniel L. Grantham,  
Jr., Graphic Communication



*The Blessed Mountain*, c. 1926  
Watercolor on paper  
11 x 8 1/2 inches (27.9 x 21.6 cm)  
Telfair Museum of Art, Savannah,  
Georgia  
Gift of Mary Haskell Minis, 1950.8.7  
Photography by Daniel L. Grantham,  
Jr., Graphic Communication



Sketch for *Jesus the Son of Man*, 1923  
Graphite and watercolor on paper  
3 5/8 x 3 1/2 inches (9.2 x 8.9 cm)  
The Metropolitan Museum of Art, Gift  
of Mrs. Mary H. Minis, 1932 (32.45.5)  
Image copyright © The Metropolitan  
Museum of Art, Image source: Art  
Resource, NY



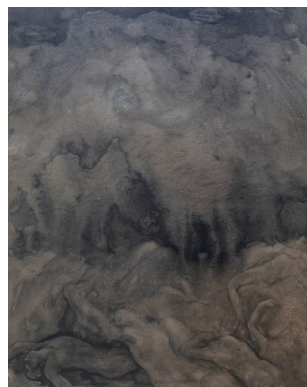
*Nude Figure Kneeling Among Clouds*, c.  
1928  
Graphite pencil and watercolor on  
paper  
11 x 8 1/2 inches (27.9 x 21.6 cm)  
Museum of Fine Arts, Boston  
Gift of Mrs. Mary Haskell Minis, 32.106



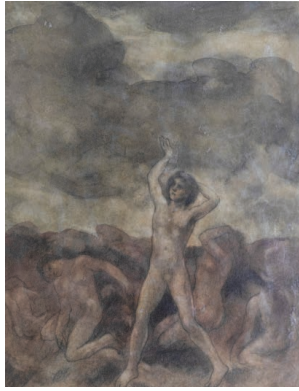
*Dance and Rhythm*, 1920-23  
Watercolor  
11 x 8 1/2 inches (28 x 21.5 cm)  
Gibran Khalil Gibran Museum,  
Courtesy of the Gibran National  
Committee



*The Universal Mother Embracing Two  
Transcending Spirits*, 1920-23  
Watercolor  
11 x 8 2/3 inches (27.8 x 22 cm)  
Gibran Khalil Gibran Museum,  
Courtesy of the Gibran National  
Committee



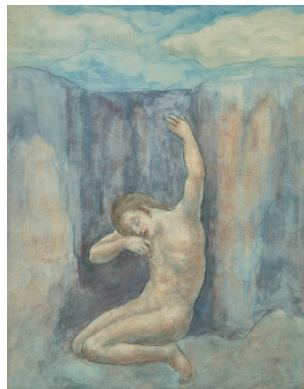
*Human Figures Spread Out Below a Dark  
Landscape*, 1930  
Wash Drawing  
14 x 11 inches (35.5 x 28 cm)  
Gibran Khalil Gibran Museum,  
Courtesy of the Gibran National  
Committee



*Storm*, c. 1922  
Watercolor  
11 x 8 1/2 inches (28 x 21.5 cm)  
Gibran Khalil Gibran Museum,  
Courtesy of the Gibran National  
Committee



*Life*, c. 1931  
Watercolor and pencil on paper  
11 x 8 1/2 inches (27.9 x 21.6 cm)  
Telfair Museum of Art, Savannah,  
Georgia  
Gift of Mary Haskell Minis, 1950.8.12  
Photography by Daniel L. Grantham,  
Jr., Graphic Communication



*The Outstretched Hand*, 1930  
Watercolor and pencil on paper  
11 x 8 3/8 inches (27.9 x 21.6)  
Telfair Museum of Art, Savannah,  
Georgia  
Gift of Mary Haskell Minis, 1950.8.13  
Photography by Erwin Gaspin



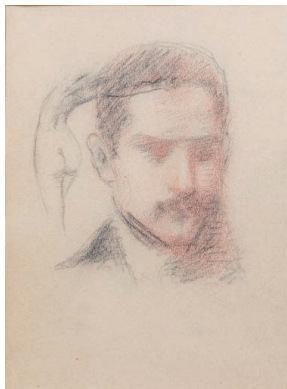
*Untitled*, 1930  
Pencil, watercolor, and gouache on  
paper mounted on cardboard  
14 1/8 x 10 7/8 inches (35.9 x 27.6 cm)  
Telfair Museum of Art, Savannah,  
Georgia  
Gift of Mary Haskell Minis, 1950.8.66  
Photography by Daniel L. Grantham,  
Jr., Graphic Communication



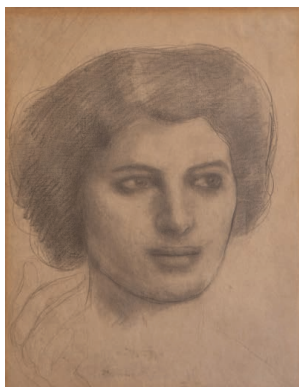
*Evocation of Sultana Tabit, 1908*  
Charcoal  
23 3/8 x 15 1/8 inches (59.5 x 38.4 cm)  
Gibran Khalil Gibran Museum,  
Courtesy of the Gibran National  
Committee



*Portrait of Kamila Gibran, 1920*  
Graphite on thin wove translucent  
paper adhered to cardstock support  
14 x 10 inches (35.5 x 25.3 cm)  
MS Am 1891.6 (Box 60: 75), Houghton  
Library, Harvard University

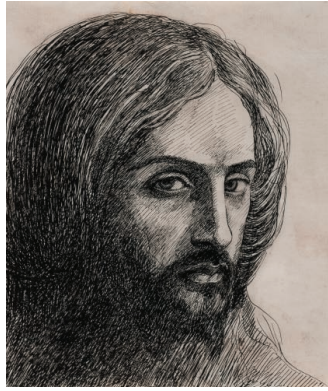


*Portrait of Youssef Howayek, n.d.*  
Charcoal  
10 1/4 x 7 3/4 inches (26 x 19.5 cm)  
Gibran Khalil Gibran Museum,  
Courtesy of the Gibran National  
Committee

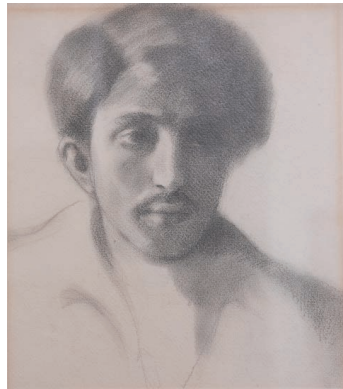


*Portrait of May Ziadeh, 1920-21*  
Charcoal  
11 x 8 5/8 inches (28 x 22 cm)  
Gibran Khalil Gibran Museum,  
Courtesy of the Gibran National  
Committee





*Ameen Rihani*, c. 1910-15  
Ink on paper  
6 5/8 x 5 3/4 inches (16.8 x 14.6 cm)  
Telfair Museum of Art, Savannah,  
Georgia  
Gift of Mary Haskell Minis, 1950.8.35  
Photography by Daniel L. Grantham,  
Jr., Graphic Communication



*Portrait of Ameen Rihani*, 1911  
Charcoal on paper  
16 1/2 x 17 3/4 inches (42 x 45 cm)  
Gibran Khalil Gibran Museum,  
Courtesy of the Gibran National  
Committee



*Portrait of Witter Bynner*, 1913  
Black ink on cream machine-made  
paper  
6 1/2 x 4 3/4 inches (16.4 x 12.2 cm)  
MS Am 1891.6 (Box 60: 76), Houghton  
Library, Harvard University



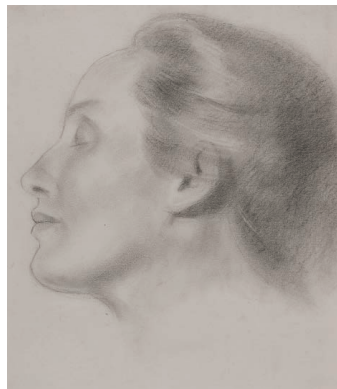
*Self-portrait*, 1908  
Charcoal  
12 3/8 x 16 7/8 inches (31.5 x 43 cm)  
Gibran Khalil Gibran Museum,  
Courtesy of the Gibran National  
Committee



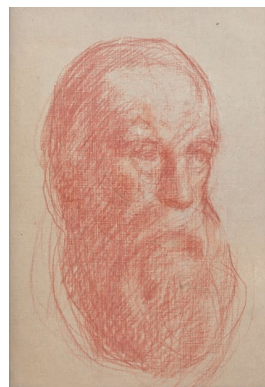
*Head of Micheline*, n.d.  
Pencil on paper  
10 7/8 x 8 3/4 inches (27.6 x 22.2 cm)  
Telfair Museum of Art, Savannah,  
Georgia  
Gift of Mary Haskell Minis, 1950.8.23  
Photography by Daniel L. Grantham,  
Jr., Graphic Communication



*Profile of Mary Haskell*, 1922  
Pencil with watercolor on paper  
14 11/16 x 10 3/4 inches (37.3 x 27.3 cm)  
Telfair Museum of Art, Savannah,  
Georgia  
Gift of Mary Haskell Minis, 1950.8.36  
Photography by Daniel L. Grantham,  
Jr., Graphic Communication



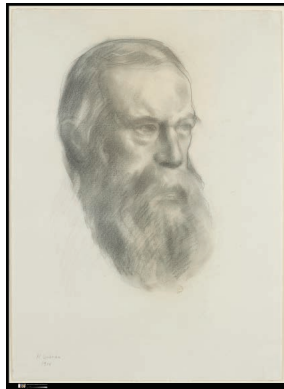
*Untitled*, n.d.  
Pencil on paper  
11 3/4 x 10 1/8 inches (29.8 x 25.7 cm)  
Telfair Museum of Art, Savannah,  
Georgia  
Gift of Mary Haskell Minis, 1950.8.37  
Photography by Daniel L. Grantham,  
Jr., Graphic Communication



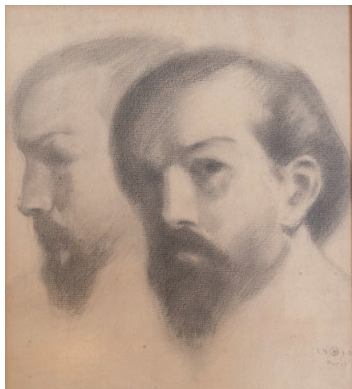
*Portrait of the American Painter Albert  
Ryder*, 1915  
Red chalk  
9 1/2 x 6 3/4 inches (24 x 17.2 cm)  
Gibran Khalil Gibran Museum,  
Courtesy of the Gibran National  
Committee



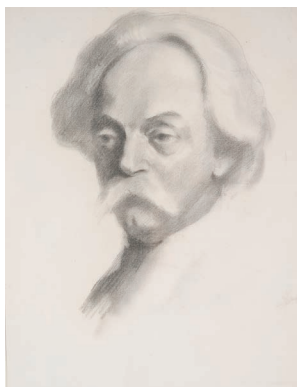
*Two Faces (Portrait of Elinor Wylie)*, 1923  
Charcoal on paper  
20 x 21 1/2 inches (51 x 54.8 cm)  
Gibran Khalil Gibran Museum,  
Courtesy of the Gibran National  
Committee



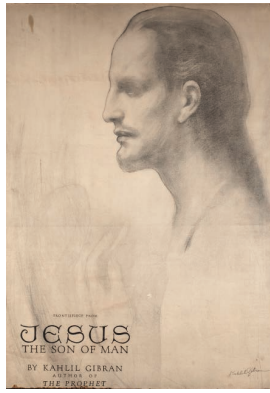
*Albert Pinkham Ryder*, 1915  
Graphite on paper  
30 1/4 x 22 1/4 inches (76.8 x 56.5 cm)  
The Metropolitan Museum of Art, Gift  
of Mrs. Mary H. Minis, 1932 (32.45.1)  
Image copyright © The Metropolitan  
Museum of Art, Image source: Art  
Resource, NY



*Portrait of Composer Claude Debussy*,  
1910  
Charcoal  
approx 16 x 15 inches  
Gibran Khalil Gibran Museum,  
Courtesy of the Gibran National  
Committee



*Portrait of Samuel Clemens*, 1907  
Pencil on paper  
23 1/4 x 15 1/3 inches (59 x 39 cm)  
Museo Soumaya·Fundación Carlos Slim



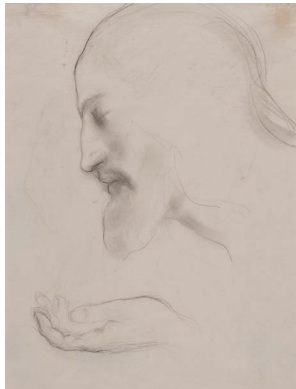
*Jesus the Son of Man* from *Jesus the Son of Man: His Words and His Deeds as Told and Recorded by Those Who Knew Him*, 1928

Print on paper  
28 x 19.5 inches (71 x 49.6 cm)  
Museo Soumaya·Fundación Carlos Slim



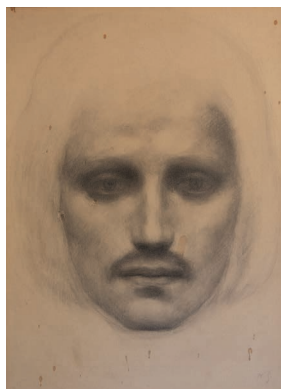
*Head of Christ*, 1920

Pencil on board  
8 x 6 inches (20.3 x 15.2 cm)  
Telfair Museum of Art, Savannah,  
Georgia. Gift of Mary Haskell Minis.  
1950.8.25  
Photography by Daniel L. Grantham,  
Jr., Graphic Communication



*Untitled*, n.d.

Pencil on paper  
10 1/2 x 8 inches (26.5 x 20.3 cm)  
Telfair Museum of Art, Savannah,  
Georgia. Gift of Mary Haskell Minis.  
1950.8.47  
Photography by Daniel L. Grantham,  
Jr., Graphic Communication

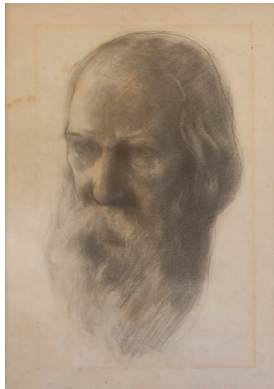


*Face of al-Mustafa*, 1923

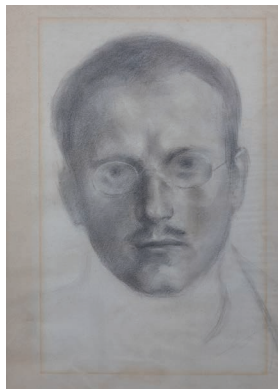
Charcoal on paper  
16 1/8 x 13 1/4 inches (41.2 x 33.5 cm)  
Gibran Khalil Gibran Museum,  
Courtesy of the Gibran National  
Committee



*Hindu Mystic*, c. 1918  
Pencil and watercolor on paper  
6 1/2 x 4 7/8 inches (16.5 x 12.5 cm)  
Museo Soumaya·Fundación Carlos Slim



*Rabindranath Tagore*, 1916  
Charcoal on paper  
21 1/2 x 18 1/8 inches (54.5 x 46 cm)  
Gibran Khalil Gibran Museum,  
Courtesy of the Gibran National  
Committee



*Portrait of Carl Gustav Jung*, 1913  
Charcoal  
16 7/8 x 13 1/8 inches (43 x 33.5 cm)  
Gibran Khalil Gibran Museum,  
Courtesy of the Gibran National  
Committee



*Untitled*, c. 1900-31  
Pencil on paper  
8 3/4 x 6 5/8 inches (22.1 x 17 cm)  
Museo Soumaya·Fundación Carlos Slim

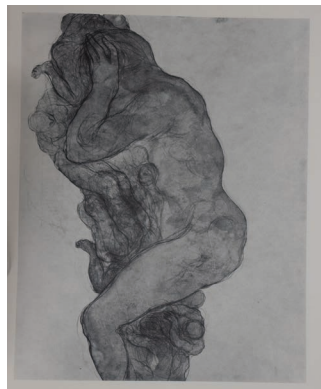


*Portrait of Margaret Lee Crofts* (Gibran's Friend), 1922  
Pencil on cardboard  
19 7/8 x 15 inches (50.5 x 38 cm)  
Museo Soumaya·Fundación Carlos Slim

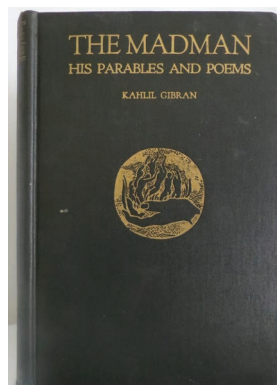
## Sketches and Ephemera



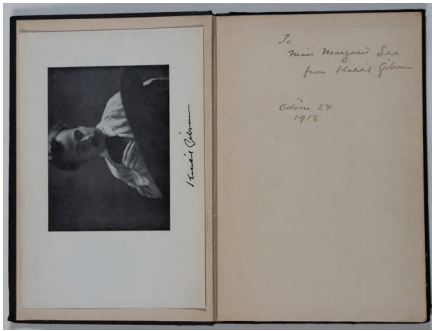
Kahlil Gibran, published by Alfred A. Knopf  
*The Earth Gods* (first edition), 1931  
Book  
Private collection



Kahlil Gibran, published by Alfred A. Knopf  
*Twenty Drawings*, 1919  
Book  
Museo Soumaya·Fundación Carlos Slim



Kahlil Gibran, published by Alfred A. Knopf  
*The Madman: His Parables and Poems*, 1938  
Book  
Private collection



Kahlil Gibran, published by Alfred A. Knopf  
*The Madman: His Parables and Poems*  
(first edition), 1918  
Book  
Museo Soumaya·Fundación Carlos Slim



*Untitled*, 1903  
Color pencil and graphite on cream wove machine-made paper  
10 7/8 x 6 7/8 inches (27.7 x 17.5 cm)  
MS Am 2161 (302)  
Houghton Library, Harvard University



*Untitled*, 1903  
Graphite on cream wove machine-made paper  
11 x 5 7/8 inches (27.8 x 14.9 cm)  
MS Am 2161 (302)  
Houghton Library, Harvard University



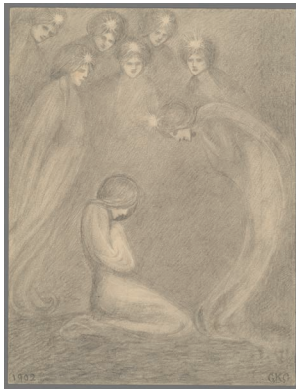
*Untitled*, 1903  
Color pencil and graphite on cream wove machine-made paper  
6 3/4 x 8 3/4 inches (17 x 22.2 cm)  
MS Am 2161 (302)  
Houghton Library, Harvard University



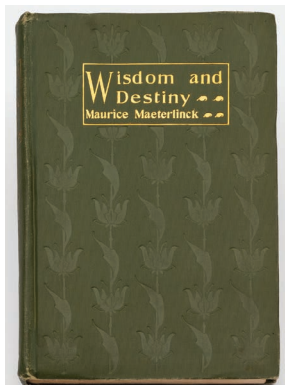
*Untitled*, 1907  
Pencil on paper  
12 7/16 x 4 5/8 inches (31.6 x 11.7 cm)  
Telfair Museum of Art, Savannah,  
Georgia, Gift of Mary Haskell Minis,  
1950.8.44



*Person with Angel*, 1902  
Graphite on cream wove machine-  
made paper  
4 1/2 x 3 3/4 inches (11.4 x 9.5 cm)  
MS Arab 60  
Houghton Library, Harvard University

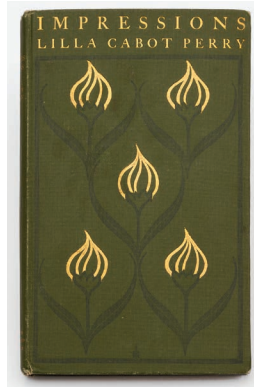


*Fille en Prière*, 1902  
Single leaf of cream wove machine-  
made paper with graphite  
8 3/4 x 6 3/4 inches (22.1 x 17 cm)  
MS Am 2161 (302)  
Houghton Library, Harvard University

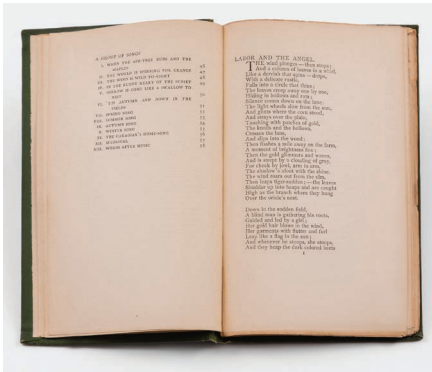


Maurice Maeterlinck (author), Kahlil  
Gibran (illustrator)  
*Wisdom and Destiny*, 1902  
Book, green embossed cover, with gilt  
lettering on front and spine  
Private collection





Lilla Cabot Perry (author), Kahlil Gibran (illustrator)  
*Impressions*, 1898  
Book  
Private collection



Duncan Campbell Scott (author)  
*Labor and the Angel*, 1898  
Book  
Private collection



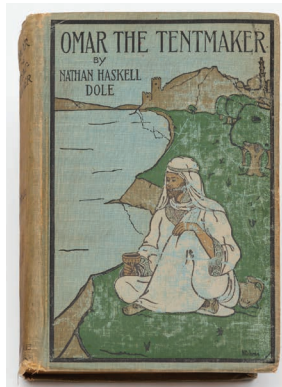
Fifteen-year-old Gibran's illustration of the title poem from Canadian writer Duncan Campbell Scott's *Labor and the Angel*, c. 1902  
Pencil and ink on card  
4 1/8 x 6 3/4 inches (10.5 x 17.1 cm)  
Museo Soumaya·Fundación Carlos Slim



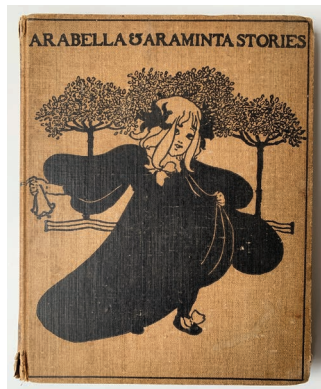
Untitled sketchbook drawing (Cedars of Lebanon), c. 1895  
Watercolor on paper in sketchbook  
5 1/2 x 8 2/3 inches (14.2 x 22 cm)  
Museo Soumaya·Fundación Carlos Slim



Untitled sketchbook drawing  
(Landscape with moon), c. 1895  
Watercolor on paper in sketchbook  
5 1/2 x 8 2/3 inches (14.2 x 22 cm)  
Museo Soumaya·Fundación Carlos Slim



Nathan Haskell Dole (author), Kahlil  
Gibran (illustrator)  
*Omar the Tentmaker*, 1898  
Book, relief print on fabric cover  
Private collection



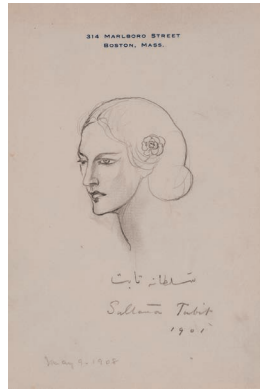
Gertrude Smith (author), Ethel Reed  
(illustrator)  
*The Arabella and Araminta Stories*, 1911  
Book  
Private collection



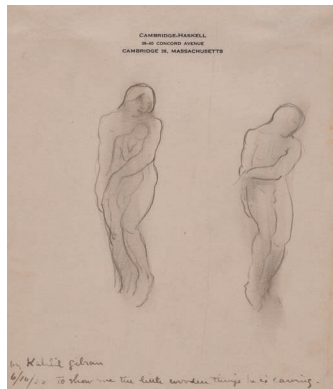
Gertrude Smith (author), Ethel Reed  
(illustrator), Kahlil Gibran (sketches)  
Drawings in a dummy copy of *The  
Arabella and Araminta Stories*, c. 1895  
Book used as sketchbook (facsimile)  
Museo Soumaya·Fundación Carlos Slim



Gibran family tree, c. 1890  
Ink and graphite on paper, double  
sided (facsimile)  
12 7/8 x 12 3/4 inches (32.9 x 32.3 cm)  
Museo Soumaya·Fundación Carlos Slim



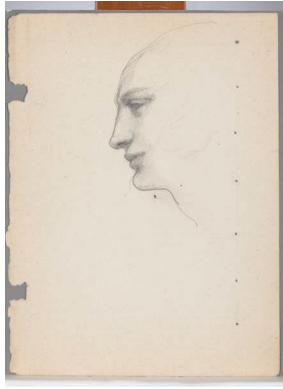
*Head of Sultana Tabit*, 1908  
Pencil on paper  
7 1/4 x 4 7/8 inches (18.4 x 12.4 cm)  
Telfair Museum of Art, Savannah,  
Georgia, Gift of Mary Haskell Minis,  
1950.8.61



*Untitled*, n.d.  
Pencil on paper  
7 x 6 inches (17.8 x 15.2 cm)  
Telfair Museum of Art, Savannah,  
Georgia, Gift of Mary Haskell Minis,  
1950.8.60



*Untitled*, c. 1900-31  
Pencil on paper  
8 3/4 x 6 1/8 inches (22.2 x 15.5 cm)  
Museo Soumaya·Fundación Carlos Slim



*Untitled*, c. 1900-31  
Pencil on paper  
10 x 7 3/8 inches (25.2 x 18.8 cm)  
Museo Soumaya·Fundación Carlos Slim



*Study of a Face*, 1917  
Pencil on paper  
9 1/4 x 7 3/8 inches (23.5 x 18.7 cm)  
Telfair Museum of Art, Savannah,  
Georgia, Gift of Mary Haskell Minis,  
1950.8.32.



*Untitled*, c. 1900-31  
Pencil and ink on cardboard laminated  
with color paper  
2 1/8 x 5 1/4 inches (5.5 x 13.3 cm)  
Museo Soumaya·Fundación Carlos Slim



*Untitled*, c. 1900-31  
Pencil on cardboard laminated with  
color paper  
2 3/4 x 2 inches (7 x 5 cm)  
Museo Soumaya·Fundación Carlos Slim



*Untitled*, c. 1900-31  
Pencil, ink, and watercolor on paper  
3 x 6 3/8 inches (7.5 x 16.2 cm)  
Museo Soumaya·Fundación Carlos Slim



*Untitled*, c. 1900-31  
Pencil on paper  
3 7/8 x 2 1/8 inches (10 x 5.5 cm)  
Museo Soumaya·Fundación Carlos Slim



*Untitled*, c. 1900-31  
Pencil on paper  
3 7/8 x 2 1/8 inches (10 x 5.5 cm)  
Museo Soumaya·Fundación Carlos Slim



*Untitled*, c. 1900-31  
Pencil on paper  
3 7/8 x 2 1/8 inches (10 x 5.5 cm)  
Museo Soumaya·Fundación Carlos Slim



*Untitled*, n.d.  
Watercolor and pencil  
1 7/8 x 5 1/4 inches (4.8 x 13.3 cm)  
Telfair Museum of Art, Savannah,  
Georgia, Gift of Mary Haskell Minis,  
1950.8.95



*Untitled*, c. 1900-31  
pencil on paper  
5 1/2 x 3 1/2 inches (13.9 x 8.9 cm)  
Museo Soumaya·Fundación Carlos Slim



*Body parts*, c. 1900-31  
Graphite on paper  
14 x 9 7/8 inches (35.4 x 25.2 cm)  
Museo Soumaya·Fundación Carlos Slim



*Untitled*, n.d.  
Pen and ink on paper  
2 1/4 x 1 1/8 inches (5.7 x 2.9 cm)  
Telfair Museum of Art, Savannah,  
Georgia, Gift of Mary Haskell Minis,  
1950.8.59.a-b



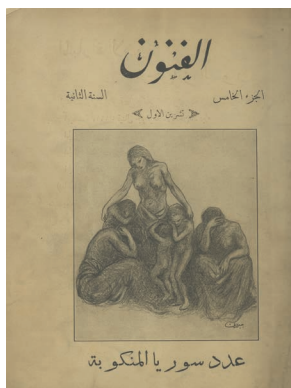
*Untitled*, n.d.  
 recto: pencil on a cardboard flap of a box, verso: pen and ink on a cardboard flap of a box  
 1 x 2 1/8 inches (2.5 x 5.4 cm)  
 Telfair Museum of Art, Savannah, Georgia, Gift of Mary Haskell Minis, 1950.8.77.a-b



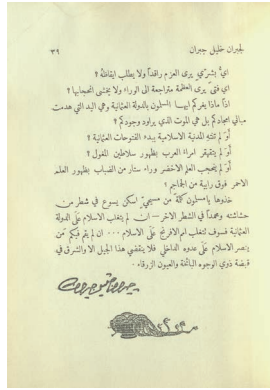
*Untitled pair of drawings (Falcons)*, c. 1900-31  
 Graphite on matchbox paper  
 3 3/4 x 1 1/2 inches (9.5 x 3.8 cm)  
 Museo Soumaya-Fundación Carlos Slim



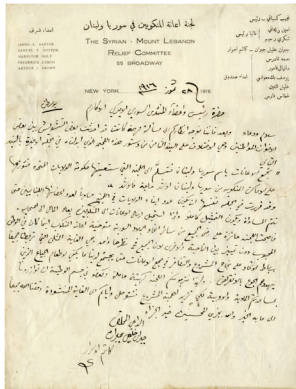
*Untitled*, c. 1918  
 Pencil and ink on paper  
 4 1/4 x 5 inches (10.7 x 12.7 cm)  
 Museo Soumaya-Fundación Carlos Slim



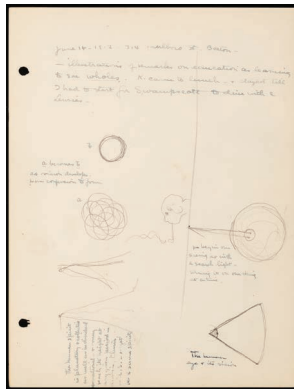
Nasib Arida (editor), Kahlil Gibran (illustrator)  
*Al-Funūn, Syria in Distress*, October 1916, 1916  
 Magazine  
 Middle East, Africa, and Asia Division, Harvard Library



Nasib Arida (editor), Kahlil Gibran (illustrator)  
*Al-Funūn* vol.1, no.8, pages 37-39,  
 November 1913  
*Al-Funūn Syria in Distress*, October 1916  
*Al-Funūn* vol.2, no.8, January 1917,  
 1913-18  
 Magazine (facsimile)  
 Firestone Library - Near East  
 Collections, NX8 .F868, Princeton  
 University Library



Letter from Kahlil Gibran to the  
 president of the Syrian American Club  
 of Boston asking him to support those  
 affected by the famine during World  
 War I, July 28, 1916  
 Ink on paper  
 Arab American National Museum  
 Collection, gift of Dr Evelyn Shakir,  
 2011.01.01

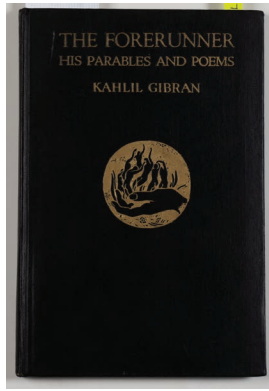


Kahlil Gibran and Mary Haskell  
 June 14, 1912, Diagram of the human  
 spirit, 1912  
 Graphite on paper (facsimile)  
 Minis Family Papers, The Louis Round  
 Wilson Special Collections Library,  
 University of North Carolina at Chapel  
 Hill

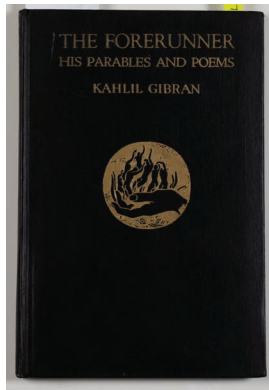


December 2, 1910, Profiles of Rihani,  
 Gibran, and Marie, 1910  
 Graphite and ink on paper (facsimile)  
 Minis Family Papers, The Louis Round  
 Wilson Special Collections Library,  
 University of North Carolina at Chapel  
 Hill

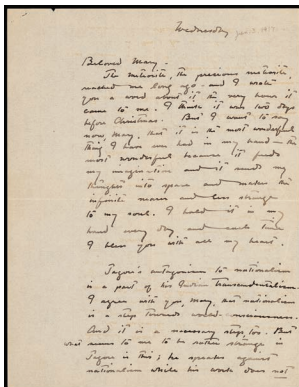




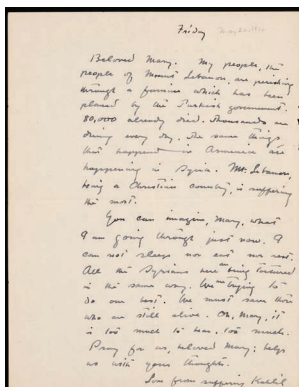
Kahlil Gibran, published by Alfred A. Knopf  
*The Forerunner* (first edition), c. 1920  
Book  
Private collection



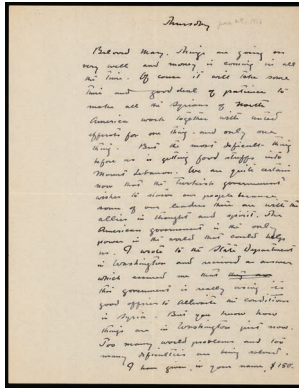
Kahlil Gibran, published by Alfred A. Knopf  
*The Forerunner* (first edition), c. 1920  
Book  
Museo Soumaya-Fundación Carlos Slim



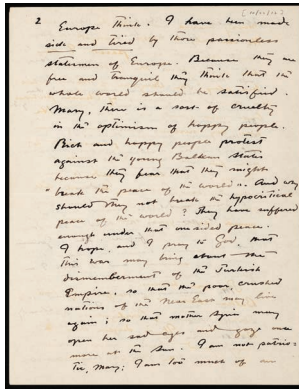
January 3, 1917, letter to Mary Haskell, 1917  
Three page letter (facsimile)  
Minis Family Papers, The Louis Round Wilson Special Collections Library, University of North Carolina at Chapel Hill



May 26, 1916, letter to Mary Haskell, 1916  
One page letter (facsimile)  
Minis Family Papers, The Louis Round Wilson Special Collections Library, University of North Carolina at Chapel Hill



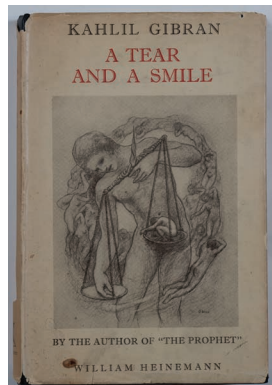
June 29, 1916, letter to Mary Haskell, 1916  
Two page letter (facsimile)  
Minis Family Papers, The Louis Round Wilson Special Collections Library, University of North Carolina at Chapel Hill



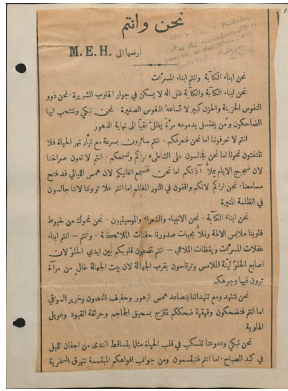
October 22, 1912, letter to Mary Haskell, 1912  
Two page letter (facsimile)  
Minis Family Papers, The Louis Round Wilson Special Collections Library, University of North Carolina at Chapel Hill



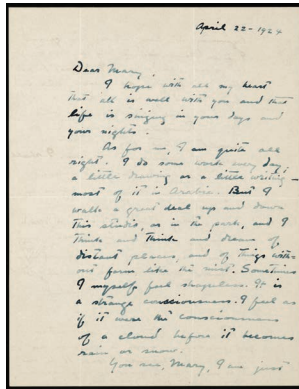
Speech to Boston Golden Links Society, *Mir'at al-Gharb* vol. 12 no. 1339, 1911  
Newspaper  
The New York Public Library, call number \*ZY\*064



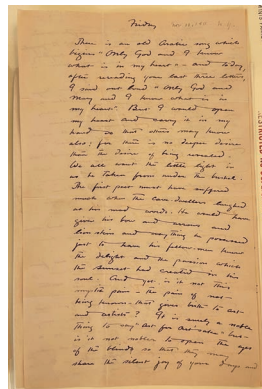
Kahlil Gibran, published by Alfred A. Knopf  
*A Tear and a Smile* (first English edition), 1950  
Book  
Museo Soumaya·Fundación Carlos Slim



Jan 12, 1911, Poem on good and evil in Arabic dedicated to MEH, 1911  
Ink on paper  
Minis Family Papers, The Louis Round Wilson Special Collections Library, University of North Carolina at Chapel Hill



April 22, 1924, letter to Mary Haskell, 1924  
Two page letter (facsimile)  
Minis Family Papers, The Louis Round Wilson Special Collections Library, University of North Carolina at Chapel Hill



November 10, 1911, letter to Mary Haskell, 1911  
Four page letter (facsimile)  
Minis Family Papers, The Louis Round Wilson Special Collections Library, University of North Carolina at Chapel Hill



Sketch of Mary Haskell and Gibran reading Nietzsche together, n.d.  
Graphite on lined paper (facsimile)  
Minis Family Papers, The Louis Round Wilson Special Collections Library, University of North Carolina at Chapel Hill



*Mir'at al-Gharb* vol. 12 no. 1316: Poem on good and evil in Arabic dedicated to MEH, *Mir'at al-Gharb* vol. 12, no. 1316, 1911

Newspaper (facsimile)  
The New York Public Library, call number \*ZY-\*064



"K.G. age 29 and 5 months and 10 days," 1912

Graphite on paper (facsimile)  
Minis Family Papers, The Louis Round Wilson Special Collections Library, University of North Carolina at Chapel Hill



*Untitled*, 1912

Graphite on paper (facsimile)  
Minis Family Papers, The Louis Round Wilson Special Collections Library, University of North Carolina at Chapel Hill

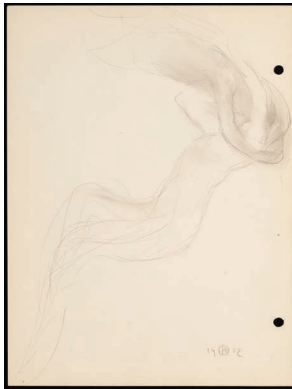


*Untitled*, 1912

Graphite on paper (facsimile)  
Minis Family Papers, The Louis Round Wilson Special Collections Library, University of North Carolina at Chapel Hill



*Untitled, 1912*  
Graphite on paper (facsimile)  
Minis Family Papers, The Louis Round  
Wilson Special Collections Library,  
University of North Carolina at Chapel  
Hill



*Untitled, 1912*  
Graphite on paper (facsimile)  
Minis Family Papers, The Louis Round  
Wilson Special Collections Library,  
University of North Carolina at Chapel  
Hill



*Untitled, 1912*  
Graphite on paper (facsimile)  
Minis Family Papers, The Louis Round  
Wilson Special Collections Library,  
University of North Carolina at Chapel  
Hill



*Untitled, 1912*  
Graphite on paper (facsimile)  
Minis Family Papers, The Louis Round  
Wilson Special Collections Library,  
University of North Carolina at Chapel  
Hill



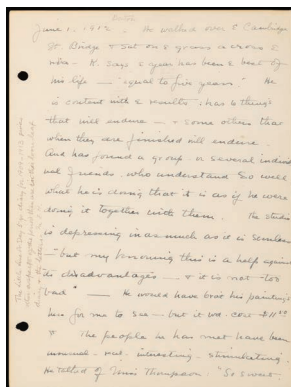
*Untitled*, 1912  
Graphite on paper (facsimile)  
Minis Family Papers, The Louis Round  
Wilson Special Collections Library,  
University of North Carolina at Chapel  
Hill



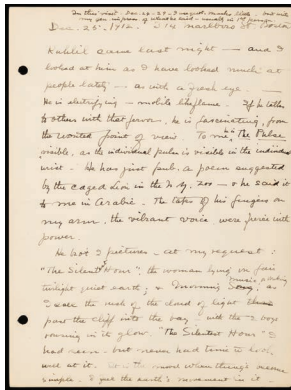
*Untitled*, 1912  
Graphite on paper (facsimile)  
Minis Family Papers, The Louis Round  
Wilson Special Collections Library,  
University of North Carolina at Chapel  
Hill



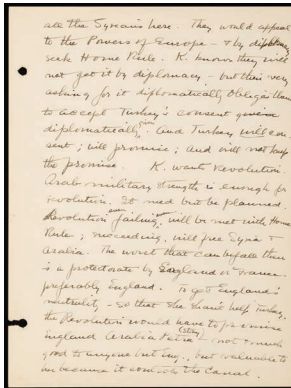
*Untitled*, June 11, 1912, 1912  
Graphite on paper (facsimile)  
Minis Family Papers, The Louis Round  
Wilson Special Collections Library,  
University of North Carolina at Chapel  
Hill



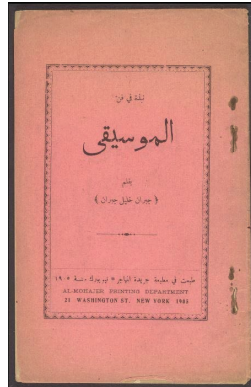
Mary Haskell  
Three-page diary entry, June 1, 1912  
Ink on paper (facsimile)  
Minis Family Papers, The Louis Round  
Wilson Special Collections Library,  
University of North Carolina at Chapel  
Hill



Mary Haskell  
 Four-page diary entry, December 25, 1912  
 Ink on paper (facsimile)  
 Minis Family Papers, The Louis Round Wilson Special Collections Library, University of North Carolina at Chapel Hill



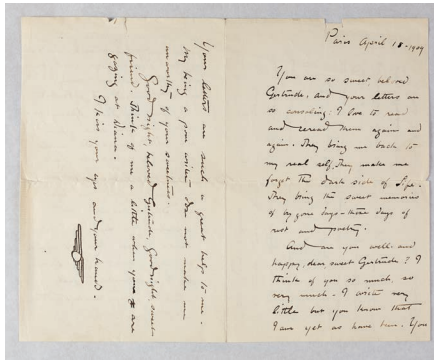
Mary Haskell  
 Ten-page diary entry, June 22, 1913  
 Ink on paper (facsimile)  
 Minis Family Papers, The Louis Round Wilson Special Collections Library, University of North Carolina at Chapel Hill



Kahlil Gibran published by al-Mohajer  
*Nubdhah fi fann al-musiqá* (The Art of Music), 1905  
 Magazine  
 Middle East, Africa, and Asia Division, Harvard Library



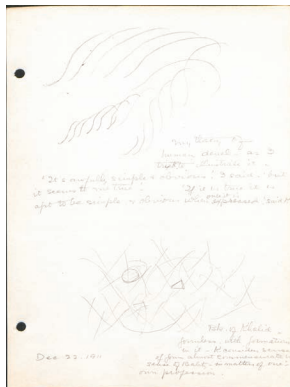
Young Kahlil's ink and watercolor birthday card to Josephine Preston Peabody, 1905  
 Ink and watercolor on card (facsimile)  
 From *Kahlil Gibran: Beyond Borders* by Jean Gibran and Kahlil Gibran, published by Interlink Books, an imprint of Interlink Publishing Group, Inc.  
 Copyright © Jean Gibran, 2016, reprinted by permission



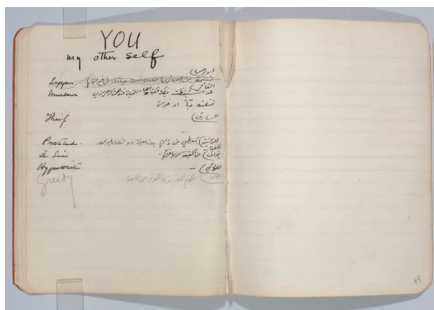
April 18, 1909, Letter to Gertrude Berrie, 1909  
Letter  
Museo Soumaya·Fundación Carlos Slim



Nasib Arida, Rashid Ayyoub, Wadi Bahout, William Catzeflis, Kahlil Gibran, Abd al-Masih Haddad, Nadra Haddad, Elia Abu Mad, Mikhail Naimy, cover design by Kahlil Gibran  
*Majmu'at al-Rabita al-Qalimiyya* (The Gathering of the Pen League), 1921  
Book  
Arab American National Museum Collection, gift of Dr Evelyn Shakir, 2011.01.01

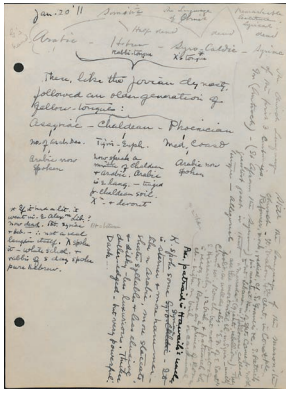


Kahlil Gibran (drawing), Mary Haskell (notes)  
Drawings on form and human development, December 22, 1911  
Graphite on paper (facsimile)  
Minis Family Papers, The Louis Round Wilson Special Collections Library, University of North Carolina at Chapel Hill

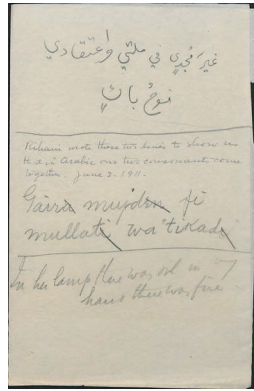


*YOU my other self*, n.d.  
Notebook page (facsimile)  
Gibran Khalil Gibran Museum, Courtesy of the Gibran National Committee

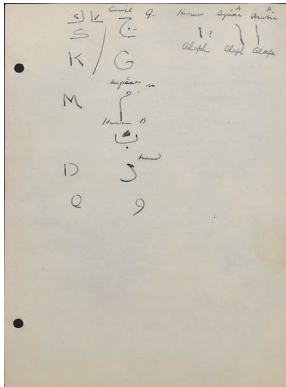




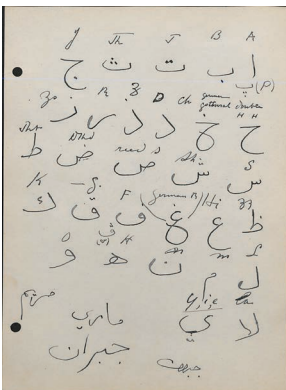
Kahlil Gibran, Mary Haskell  
 Page breaking down the languages of  
 the Maronite Church, January 20, 1911  
 Ink and graphite on paper (facsimile)  
 Minis Family Papers, The Louis Round  
 Wilson Special Collections Library,  
 University of North Carolina at Chapel  
 Hill



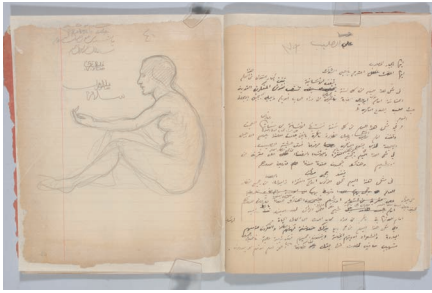
Ameen Rihani (arabic and translation),  
 Mary Haskell (notes)  
 Lines in Arabic to explain the language,  
 June 3, 1911  
 Graphite on paper (facsimile)  
 Minis Family Papers, The Louis Round  
 Wilson Special Collections Library,  
 University of North Carolina at Chapel  
 Hill



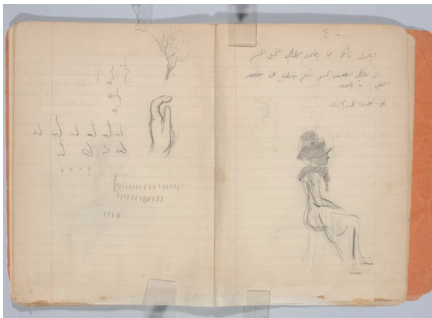
Page breaking down Hebrew, Arabic  
 and Syriac, 1911  
 Ink on paper  
 Minis Family Papers, The Louis Round  
 Wilson Special Collections Library,  
 University of North Carolina at Chapel  
 Hill



Page practicing Arabic, 1911  
 Ink on paper  
 Minis Family Papers, The Louis Round  
 Wilson Special Collections Library,  
 University of North Carolina at Chapel  
 Hill



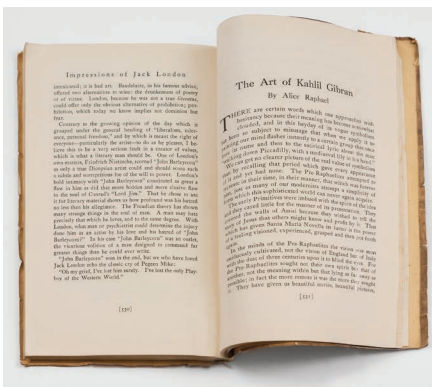
Woman cupping hands around phrase  
 “Salam to you,” n.d.  
 Pencil on lined paper (facsimile)  
 Gibran Khalil Gibran Museum,  
 Courtesy of the Gibran National  
 Committee



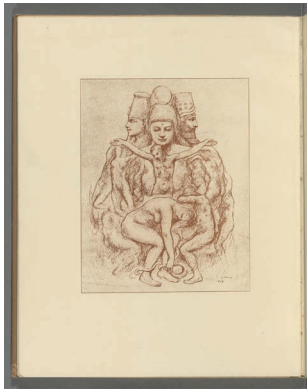
Noses becoming mudra-type signs, n.d  
 Pencil on lined paper (facsimile)  
 Gibran Khalil Gibran Museum,  
 Courtesy of the Gibran National  
 Committee



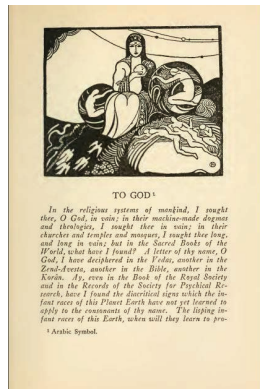
Head of Micheline and line drawing of  
 Sultana's head, 1908  
 Pencil and ink on paper  
 7 3/4 x 4 7/8 inches (19.7 x 12.4 cm)  
 Telfair Museum of Art, Savannah,  
 Georgia, Gift of Mary Haskell Minis,  
 1950.8.62



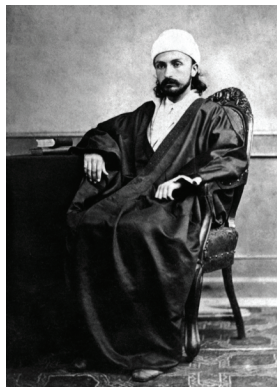
Alice Raphael, edited by James  
 Oppenheim, Waldo Frank, and Van  
 Wyck Brooks  
 “The Art of Kahlil Gibran”, *The Seven  
 Arts*, March 1917  
 Magazine  
 Private collection



*Al-Mawākib: Naẓarāt shā'ir wa-muṣawwir fī al-ayyām wa-al-layālī* (The Processions), plate facing page 10, 1918  
Print in bound book (facsimile)  
Houghton Library, Harvard University



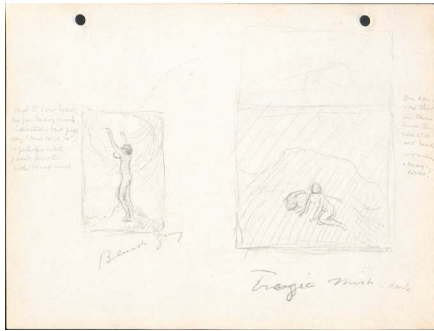
Ameen Rihani (author), Kahlil Gibran (Illustrator), published by Dodd, Mead, and Company  
*The Book of Khalid*, 1911  
Book  
General Research Division, The New York Public Library, Astor, Lenox and Tilden Foundations



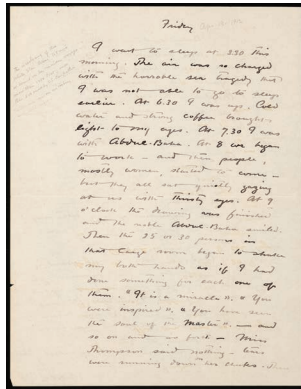
Unknown Photographer  
*Portrait of Abdul Baha in Edirne*, c. 1868  
Photograph (facsimile)  
© Bahá'í International Community



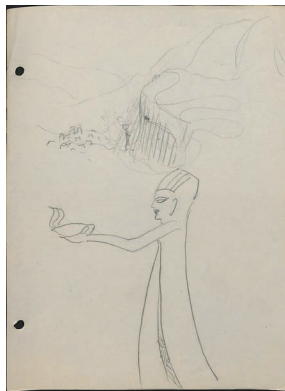
*Al-Sā'ih*, January 1921, featuring *The Traveler* cover, 1921  
Journal (facsimile)  
Faris and Yamna Naff Arab American Collection, Archives Center, National Museum of American History, Smithsonian Institution



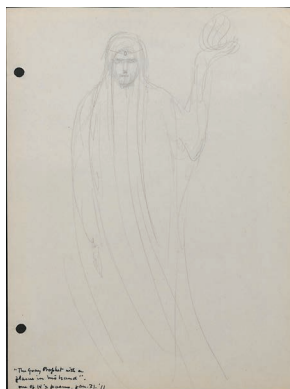
Small drawings of paintings, one featuring Abdul Baha, 1911  
 Graphite on paper (facsimile)  
 Minis Family Papers, The Louis Round Wilson Special Collections Library, University of North Carolina at Chapel Hill



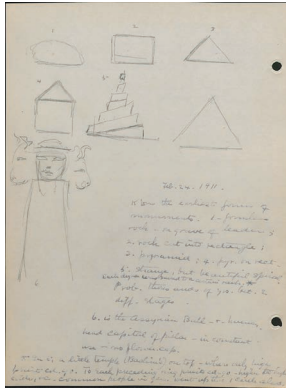
Two-page letter to Mary Haskell, April 19, 1912  
 Ink on paper (facsimile)  
 Minis Family Papers, The Louis Round Wilson Special Collections Library, University of North Carolina at Chapel Hill



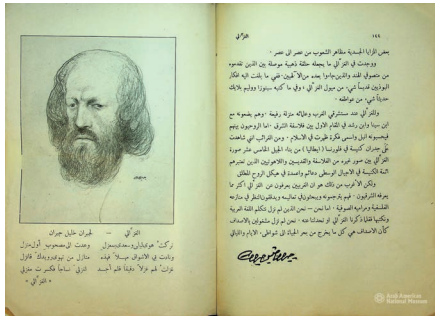
*Untitled (Figure with oil lamp)*, 1911  
 Graphite on paper (facsimile)  
 Minis Family Papers, The Louis Round Wilson Special Collections Library, University of North Carolina at Chapel Hill



*The Gray Prophet With A Flame In His Hand*, 1911  
 Graphite and ink on paper (facsimile)  
 Minis Family Papers, The Louis Round Wilson Special Collections Library, University of North Carolina at Chapel Hill



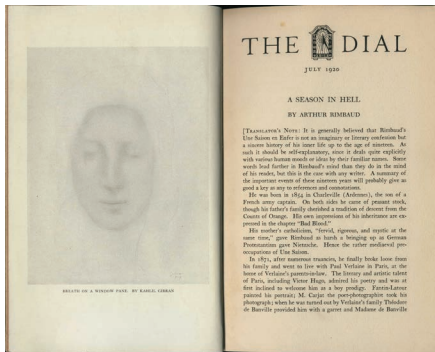
Drawings of forms of monuments,  
February 24, 1911  
Graphite and ink on paper (facsimile)  
Minis Family Papers, The Louis Round  
Wilson Special Collections Library,  
University of North Carolina at Chapel  
Hill



Nasib Arida (editor), Mikhail Naimy  
(writer), Ameen Rihani (writer), Kahlil  
Gibran (illustrator)  
*Al-Funūn* vol. 3, no. 2, September 1917,  
pages 144-145, 1917  
Journal  
Arab American National Museum  
Collection, gift of Dr Evelyn Shakir,  
2011.01.01



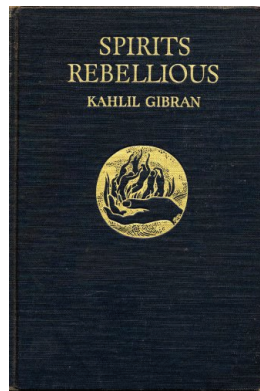
Untitled, 1912  
Graphite on paper (facsimile)  
Minis Family Papers, The Louis Round  
Wilson Special Collections Library,  
University of North Carolina at Chapel  
Hill



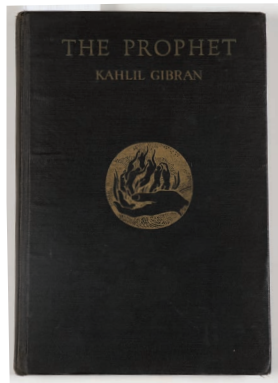
*Breath on a Window Pane, The Dial*, vol.  
69, 1920  
Magazine (facsimile)  
University of Virginia Library



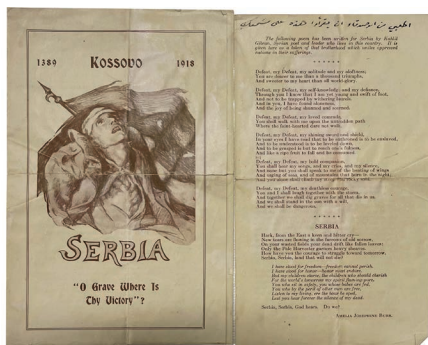
Nasib Arida (editor), Kahlil Gibran (illustrator)  
*Al-Funūn*, vol. 2 no.9, January 1917, 1917  
 Journal  
 Middle East, Africa, and Asia Division,  
 Harvard Library



Kahlil Gibran, published by Alfred A. Knopf  
*Spirits Rebellious* (first English edition), 1948  
 Book  
 Private collection



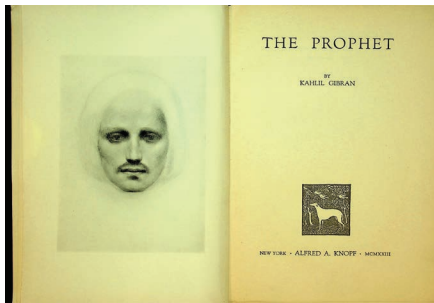
Kahlil Gibran, published by Alfred A. Knopf  
*The Prophet* (first edition), 1923  
 Book  
 Arab American National Museum  
 Collection, courtesy of the University  
 of Minnesota Immigration History  
 Research Center and Helen Samhan,  
 2012.03.03



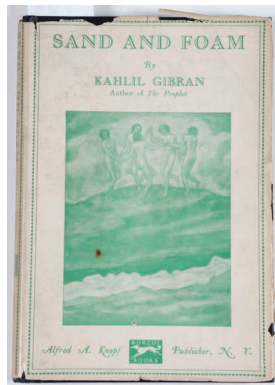
*Pamphlet for Serbia*, 1918  
 Pamphlet (facsimile)  
 Museo Soumaya·Fundación Carlos Slim



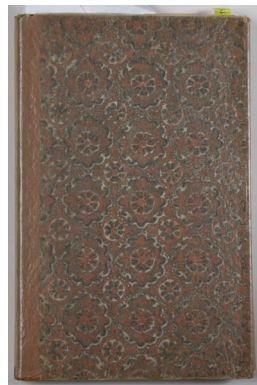
*The Princess* in the manuscript for *The Forerunner*, 1921  
Pencil and ink on paper  
Museo Soumaya·Fundación Carlos Slim



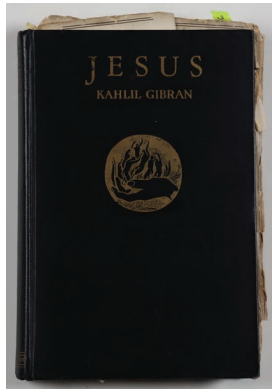
Kahlil Gibran, published by Alfred A. Knopf  
*The Prophet* (first edition), 1923  
Book  
Museo Soumaya·Fundación Carlos Slim



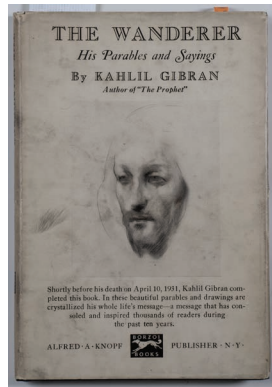
Kahlil Gibran, published by Alfred A. Knopf  
*Sand and Foam* (first edition), 1926  
Book  
Museo Soumaya·Fundación Carlos Slim



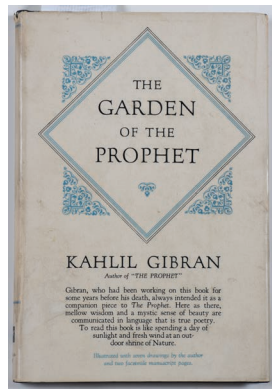
Kahlil Gibran, published by Alfred A. Knopf  
*Sand and Foam* (limited edition signed by Gibran), 1927  
Book  
Museo Soumaya·Fundación Carlos Slim



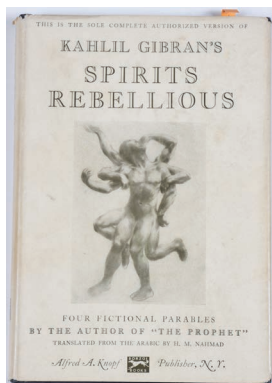
Kahlil Gibran, published by Alfred A. Knopf  
*Jesus the Son of Man* (first edition), 1928  
Book  
Museo Soumaya·Fundación Carlos Slim



Kahlil Gibran, published by Alfred A. Knopf  
*The Wanderer* (first posthumous edition), 1931  
Book  
Museo Soumaya·Fundación Carlos Slim

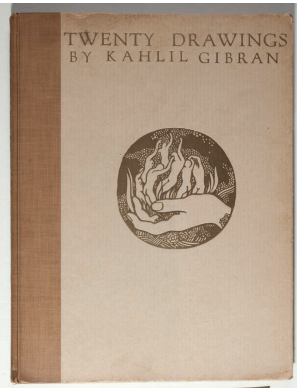


Kahlil Gibran, published by Alfred A. Knopf  
*The Garden of the Prophet* (first edition), 1933  
Book  
Museo Soumaya·Fundación Carlos Slim

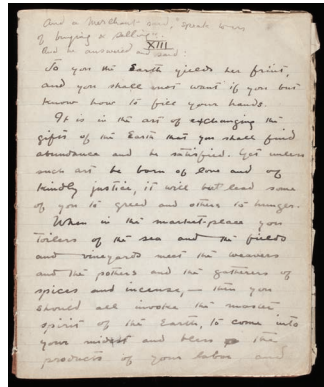


Kahlil Gibran, published by Alfred A. Knopf  
*Spirits Rebellious* (first English edition), 1948  
Book  
Museo Soumaya·Fundación Carlos Slim

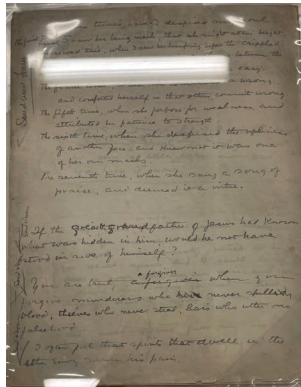




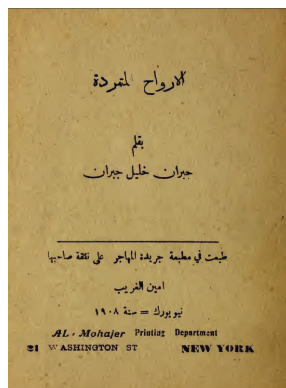
Kahlil Gibran, published by Alfred A. Knopf  
*Twenty Drawings* (second edition), 1974  
Book  
Museo Soumaya·Fundación Carlos Slim



*The Prophet* manuscript, c. 1903-23  
Ink on lined paper  
Museo Soumaya·Fundación Carlos Slim



*Sand and Foam* manuscript, c. 1924-26  
Ink on lined paper  
Museo Soumaya·Fundación Carlos Slim

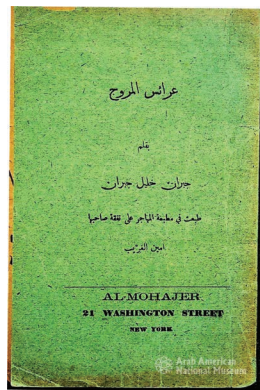


Kahlil Gibran, published by al-Mohajer  
*Al-Arwāḥ al-mutamirrida* (Spirits Rebellious) (first edition), 1908  
Book  
Minis Family Papers, The Louis Round Wilson Special Collections Library,  
University of North Carolina at Chapel Hill

Kahlil Gibran, published by al-Mohajer  
*'Arā'is al-Murūj* (Nymphs of Meadows  
and Nymphs of the Valley) (first  
edition), 1906-07

Book

Minis Family Papers, The Louis Round  
Wilson Special Collections Library,  
University of North Carolina at Chapel  
Hill



Kahlil Gibran, published by al-Mohajer  
*'Arā'is al-Murūj* (Spirit Brides), 1906  
Book

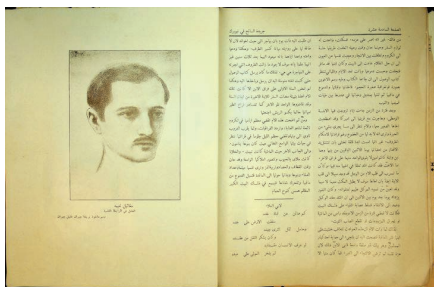
Arab American National Museum  
Collection, gift of Dr Evelyn Shakir,  
2011.01.01



Kahlil Gibran, published by al-Mohajer  
*Al-Arwāḥ al-Mutamirrida* (Spirits  
Rebellious), 1908

Book

Arab American National Museum  
Collection, gift of Dr Evelyn Shakir,  
2011.01.01



Nasib Arida, Rashid Ayyoub, Wadi  
Bahout, William Catzeflis, Kahlil  
Gibran, Abd al-Masih Haddad, Nadra  
Haddad, Elia Abu Madi, Mikhail Naimy,  
Nimah al-Hajj, Mahasin Mitraj, Salima  
Mitraj, Iskandar Mikhail al-Yaziji,  
Badri Farkuh, Emile Zola, Ibn al-Rumi,  
published by Abd al-Masih Haddad  
*Al-Sā'ih*, 1923

Magazine

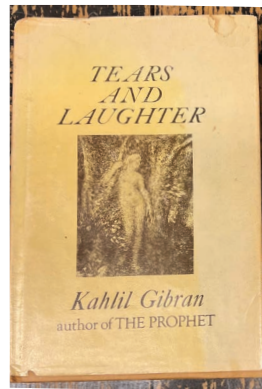
Arab American National Museum  
Collection, gift of Dr Evelyn Shakir,  
2011.01.01



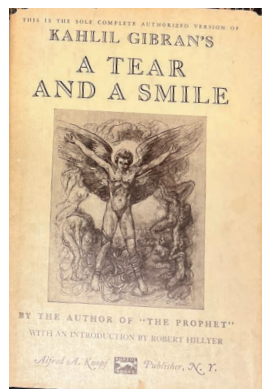
Rashid Ayyoub (author), Kahlil Gibran (illustrator)  
*Aghānī al-Darwīsh* (Songs of the Dervish), 1928  
 Book  
 Arab American National Museum Collection, gift of Dr Evelyn Shakir, 2011.01.01



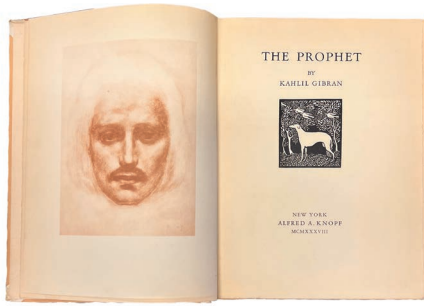
Kahlil Gibran, published by Al-Sā'ih  
*Al-Sanābil* (The Spikes of Grain), 1929  
 Book  
 Arab American National Museum Collection, gift of Dr Evelyn Shakir, 2011.01.01



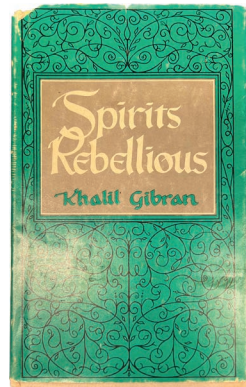
Kahlil Gibran, published by The Philosophical Library, Inc.  
*Tears and Laughter*, 1949  
 Book  
 Collection of Jordan Nassar



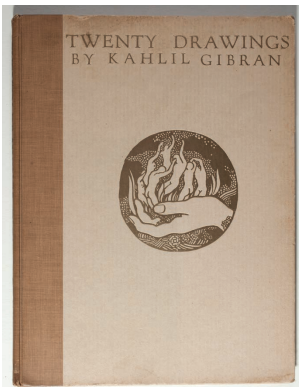
Kahlil Gibran, published by Alfred A. Knopf  
*A Tear and a Smile*, 1977  
 Book  
 Collection of Jordan Nassar



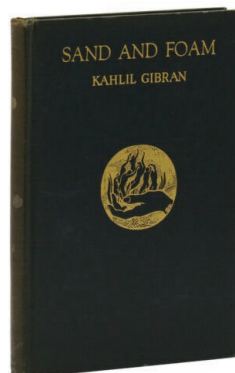
Kahlil Gibran, published by Alfred A. Knopf  
*The Prophet* (first edition), 1923  
Book  
Collection of Jordan Nassar



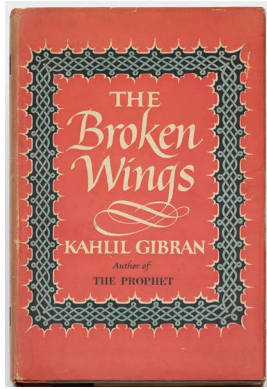
Kahlil Gibran, published by The Philosophical Library, Inc.  
*Spirits Rebellious*, 1947  
Book  
Collection of Jordan Nassar



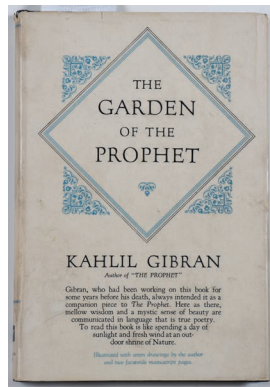
Kahlil Gibran, published by Alfred A. Knopf  
*Twenty Drawings* (second edition), 1974  
Book  
Collection of Jordan Nassar



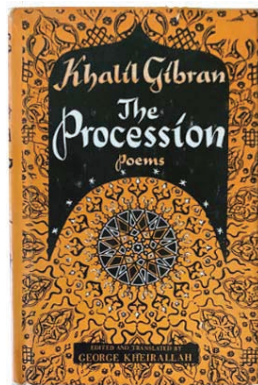
Kahlil Gibran, published by Alfred A. Knopf  
*Sand and Foam* (first edition), 1926  
Book  
Private collection



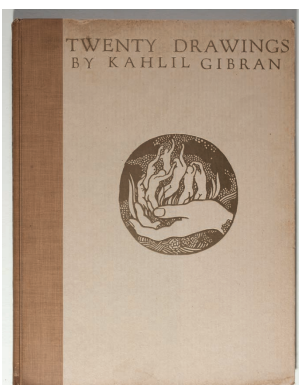
Kahlil Gibran, published by Citadel Press  
*The Broken Wings* (first English edition), 1957  
Book  
Private collection



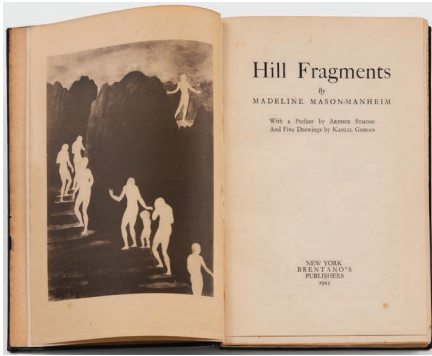
Kahlil Gibran, published by Alfred A. Knopf  
*The Garden of the Prophet* (first edition, 19th printing), 1933  
Book  
Private collection



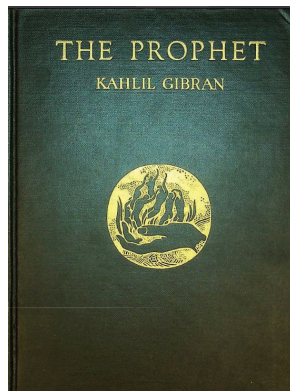
Kahlil Gibran, published by The Philosophical Library, Inc.  
*The Procession* (first English edition), 1958  
Book  
Private collection



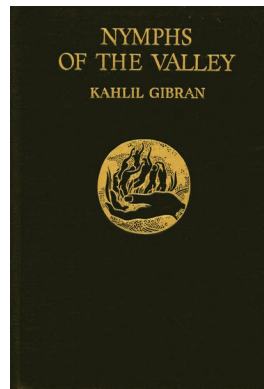
Kahlil Gibran, published by Alfred A. Knopf  
*Twenty Drawings* (second edition), 1974  
Book  
Private collection



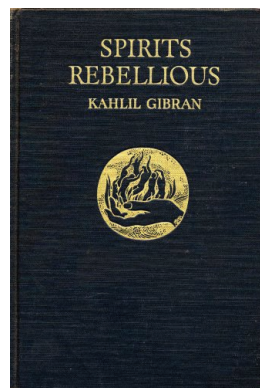
Madeline Mason-Manheim (author),  
Kahlil Gibran (illustrator), published by  
Cecil Palmer  
*Hill Fragments*, 1925  
Books  
Private collection



Kahlil Gibran, published by Alfred A.  
Knopf  
*The Prophet* (first edition, 40th  
printing), 1923  
Book  
Private collection



Kahlil Gibran, published by Alfred A.  
Knopf  
*Nymphs of the Valley* (first English  
edition), 1948  
Book  
Private collection



Kahlil Gibran, published by Alfred A.  
Knopf  
*Spirits Rebellious* (first English edition),  
1948  
Book  
Private collection