

GALERIE TIMONIER

Teapot Pairings, Alexander Lee Page. A way of recognizing an image must be based on patterns of what we wish to accept as the truth. Short and stout, tall and sliding, hollow and shaken. A troubling succession of daily assumption. Shut your eyes to see, and there it is; A winning gentleness, a calm countenance found in a merry heart of what your memory is fond of. We hang our eyes at a solitary object, graciously there to hold warmth until it cries out for attention. A metal receptacle, keeper of spirits desired to be noticed. The heel is standing tall, commanding presence, the bell rings in assertion. We hang our eyes at a series of interwoven objects competing for focus and familiarity. Persistence finds its way to a meditative state while our limitations are acknowledged in every desire to remember. The yearning to recall demands acceptance of miss memory and a new narrative, narrator, and perceptions in infinite variations of the teapot. At times, the familiarity of a recent past is preserved and honored with what is seen behind the last layer of paint, dutifully safeguarding a revered ritual and restoring a much longed for sense of ease.

GALERIE TIMONIER

Alexander Lee Page
'Teapot Paintings'
Jan 11 - Feb 10
2024

"If I were to suggest that between the Earth and Mars there is a china teapot revolving about the sun in an elliptical orbit, nobody would be able to disprove my assertion provided I were careful to add that the teapot is too small to be revealed even by our most powerful telescopes."

- Bertrand Russell, 1952

Galerie Timonier is pleased to present *Teapot Paintings*: Alexander Lee Page's first exhibition with the gallery.

-

A way of recognizing an image must be based on patterns of what we wish to accept as the truth. Short and stout, tall and sliding, hollow and shaken. A troubling succession of daily assumptions. Shut your eyes to see, and there it is; A winning gentleness, a calm countenance found in a merry heart of what your memory is fond of.

We hang our eyes at a solitary object, graciously there to hold warmth until it cries out for attention. A metal receptacle, keeper of spirits desired to be noticed. The heel is standing tall, commanding presence, the bell rings in assertion. We hang our eyes at a series of interwoven objects competing for focus and familiarity.

Persistence finds its way to a meditative state while our limitations are acknowledged in every desire to remember. The yearning to recall demands acceptance of miss memory and a new narrative, narrator, and perceptions in infinite variations of the teapot. At times, the familiarity of a recent past is preserved and honored with what is seen behind the last layer of paint, dutifully safeguarding a revered ritual and restoring a much longed for sense of ease.

calligram and text by Nicole Della Costa

-

Alexander Lee Page (b. 1990, Denver, CO) lives and works in New York City. He works in painting, drawing, and metallurgy. This is his first solo exhibition in New York City.



Spirit painting
oil & oil stick on canvas wrapped panel
11 1/4 x 13 1/4 x 1/2 in. | 28,6 x 33,6 x 1,3 cm. | 2022



Teapot & Shoe painting
oil & oil stick on canvas wrapped panel
11 1/4 x 13 1/4 x 1/2 in. | 28,6 x 33,6 x 1,3 cm. | 2022



Teapot painting
oil & oil stick on canvas wrapped panel
11 1/4 x 13 1/4 x 1/2 in. | 28,6 x 33,6 x 1,3 cm. | 2022



Teapot painting
oil & oil stick on canvas wrapped panel
11 1/4 x 13 1/4 x 1/2 in. | 28,6 x 33,6 x 1,3 cm. | 2022



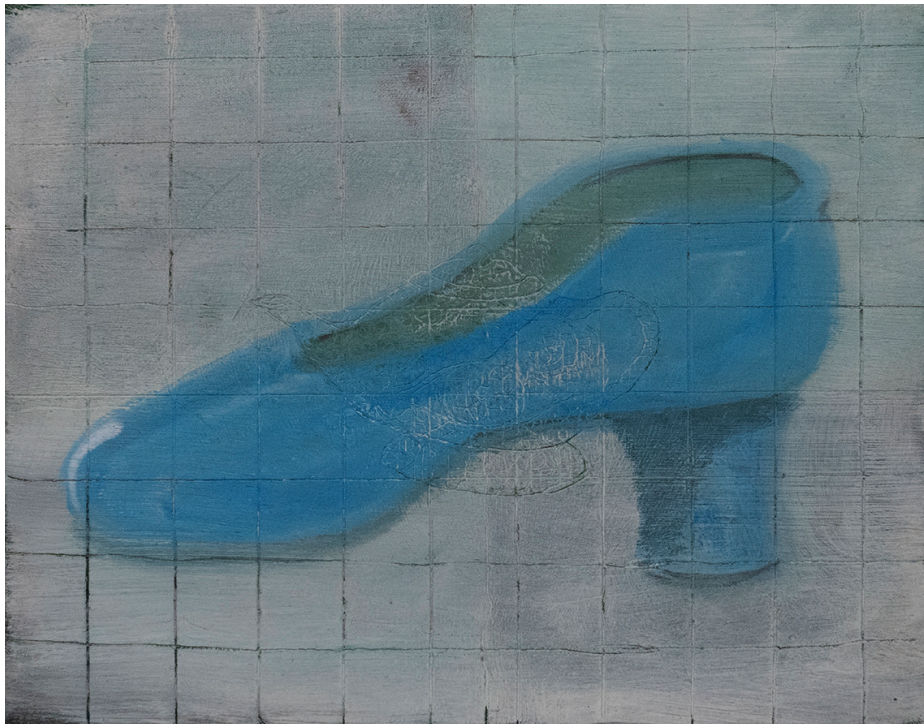
Teapot & Shoe painting
oil & oil stick on canvas wrapped panel
11 1/4 x 13 1/4 x 1/2 in. | 28,6 x 33,6 x 1,3 cm. | 2022



Shoe painting
oil & oil stick on canvas wrapped panel
11 1/4 x 13 1/4 x 1/2 in. | 28,6 x 33,6 x 1,3 cm. | 2022



Shoe painting
oil & oil stick on canvas wrapped panel
11 1/4 x 13 1/4 x 1/2 in. | 28,6 x 33,6 x 1,3 cm. | 2022



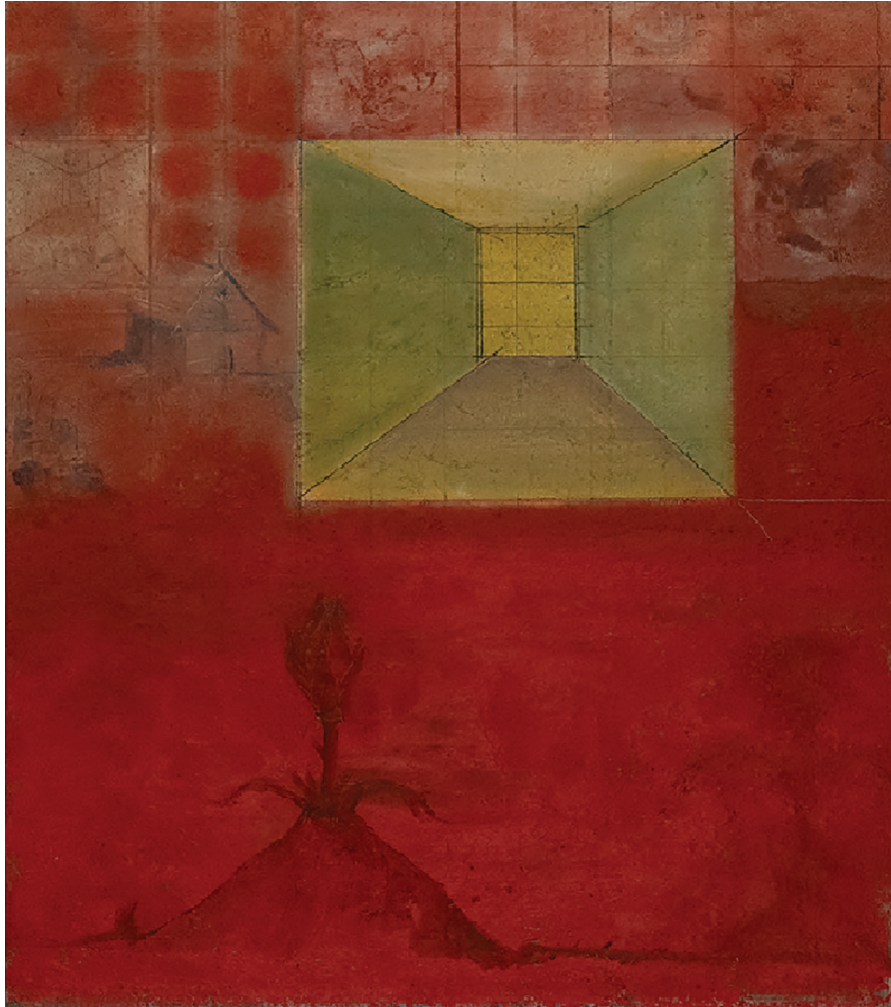
Shoe painting
oil & oil stick on canvas wrapped panel
11 1/4 x 14 1/4 x 1/2 in. | 28,6 x 36,2 x 1,3 cm. | 2022



Teapot Wagon
oil and oil stick on canvas
18 x 24 1/4 x 1 1/14 in. | 45,7 x 61,5 x 3,1 cm. | 2021



Seahouse
oil and oil stick on canvas
18 x 24 1/4 x 1 1/14 in. | 45,7 x 61,5 x 3,1 cm. | 2021



Red and Yellow Room
oil & oil stick on canvas mounted on board
16 x 18 x 1 in. | 40,6 x 45,7 x 2,5 cm | 2022



Spider chair
reclaimed steel
22 x 10 x 31 7/8 in. | 55,9 x 25,4 x 80,9 cm. | 2020



Spider 2
reclaimed steel
26 5/8 x 17 3/4 x 37 5/8 in. | 67,6 x 45,1 x 95.6 cm. | 2020