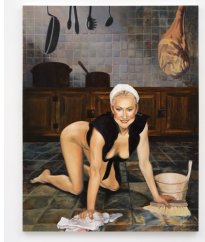




Naoki Sutter-Shudo

Ciao
2024
Oil on canvas
62 x 46 inches
(Inv# NS24-001)



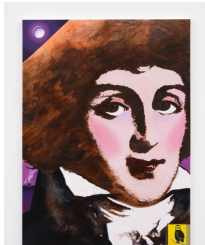
Naoki Sutter-Shudo

The gentleman has been served (Pierrette Le Pen 1987)
2024
Oil on canvas
58 x 45 inches
(Inv# NS24-002)



Naoki Sutter-Shudo

Sorry 1
2024
Oil on canvas
60 x 48 inches
(Inv# NS24-003)



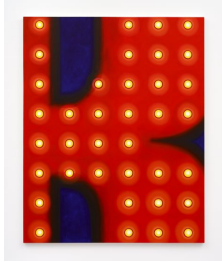
Naoki Sutter-Shudo

Saint-Just
2024
Oil on canvas
62 x 46 inches
(Inv# NS24-004)



Naoki Sutter-Shudo

Draft of a sculpture of the Son of man on Patmos abandoned in Delaware
2024
Oil on canvas
62 x 50 inches
(Inv# NS24-005)



Naoki Sutter-Shudo
Sorry 2
2024
Oil on canvas
60 x 48 inches
(Inv# NS24-006)



Naoki Sutter-Shudo
Flag of Hawaii
2023
Oil on canvas
46 x 62 inches
(Inv# NS24-007)



Naoki Sutter-Shudo
Arrival
2024
Oil on canvas
60 x 52 inches
(Inv# NS24-008)



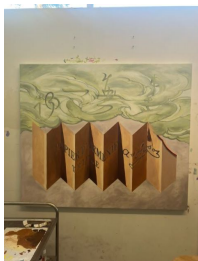
Naoki Sutter-Shudo
Requirement
2023
Oil on canvas
60 x 52 inches
(Inv# NS24-009)



Naoki Sutter-Shudo
S.U.P.
2024
Oil on canvas
45 x 58 inches
(Inv# NS24-010)



Naoki Sutter-Shudo
After Alexandra Noel's "Bookmarks"
2024
Oil on canvas
48 x 60 inches
(Inv# NS24-011)



Naoki Sutter-Shudo
Please Purify
2024
Oil on canvas
45 x 52 inches
(Inv# NS24-012)



Naoki Sutter-Shudo

Critical Figure 1

2024

Mixed media of various organic and inorganic material, enamel, metronome mechanism
(Inv# NS24-013)



Naoki Sutter-Shudo

Critical Figure 2

2024

Mixed media of various organic and inorganic material, enamel, metronome mechanism
(Inv# NS24-014)



Naoki Sutter-Shudo

Critical Figure 3

2024

Mixed media of various organic and inorganic material, enamel, metronome mechanism
(Inv# NS24-015)



Naoki Sutter-Shudo

Critical Figure 4

2024

Mixed media of various organic and inorganic material, enamel, metronome mechanism
(Inv# NS24-016)



Naoki Sutter-Shudo

Critical Figure 5

2024

Mixed media of various organic and inorganic material, enamel, metronome mechanism
(Inv# NS24-017)



Naoki Sutter-Shudo

Critical Figure 6

2024

Mixed media of various organic and inorganic material, enamel, metronome mechanism
(Inv# NS24-018)



Naoki Sutter-Shudo

Critical Figure 7

2024

Mixed media of various organic and inorganic material, enamel, metronome mechanism
(Inv# NS24-019)



Naoki Sutter-Shudo

Headless

2024

Enameled wood, stainless steel
(Inv# NS24-020)



Naoki Sutter-Shudo

Philomène

2024

Enameled wood, wax
(Inv# NS24-021)