

## Huguette Caland: Tête-à-Tête

June 10, 2021–September 19, 2021

For further information and images, please contact  
Allison Underwood, Director of Communications  
212 219 2166 x119 | [aunderwood@drawingcenter.org](mailto:aunderwood@drawingcenter.org)



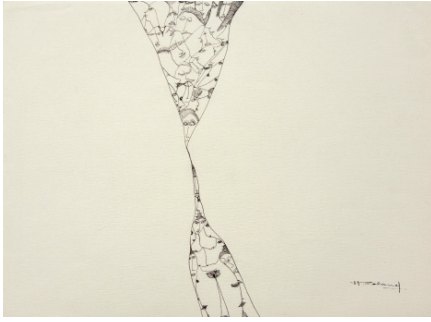
*Helen*, 1967  
27 1/4 x 34 3/4 inches (69.4 x 88.5 cm)  
Oil on linen  
Private collection



*Enlève ton doigt (Remove Your Finger)*, 1971  
15 x 30 inches (38.1 x 76.2 cm)  
Oil on canvas  
Private collection/ Galerie Janine Rubeiz, Beirut



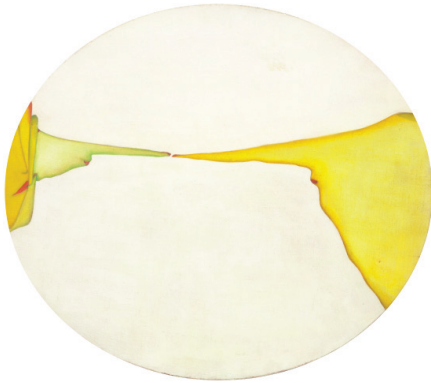
*Mustafa, poids et haltères (Mustafa, Weights and Dumbbells)*, 1970  
12 1/2 x 9 1/2 inches (31.7 x 24.1 cm)  
Ink on paper  
Private collection



*Parenthèse 2* (Parenthesis 2), 1971  
9 1/2 x 13 inches (24 x 33 cm)  
Ink on paper  
Private collection



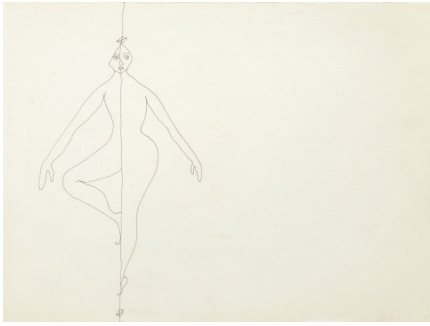
*1er Dessin encre de Chine, hiver* (First Ink Drawing from China, Winter), 1971  
12 1/2 x 9 1/2 inches (31.7 x 24.1 cm)  
Ink on paper  
Private collection



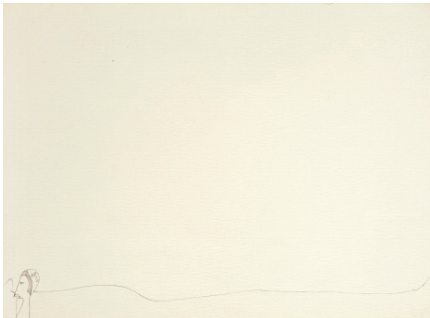
*Nous deux* (The Two of Us), 1972  
26 3/4 x 30 1/2 inches (67.9 x 77.5 cm)  
Oil on canvas  
Private collection



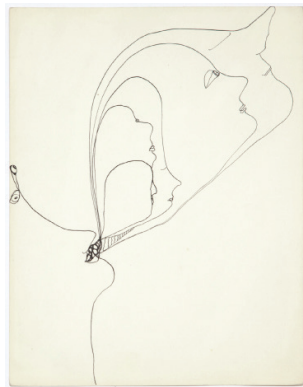
*Erotic Composition*, 1967–70  
13 1/2 x 18 7/8 inches (34.3 x 47.9 cm)  
Ink and pencil on paper  
Courtesy of Barjeel Art Foundation, Sharjah.  
Photographed by Capital D



*Moi et moi corde raide* (Me and My Tightrope),  
1971  
10 x 13 1/2 inches (25.4 x 34.3 cm)  
Ink on paper  
Private collection



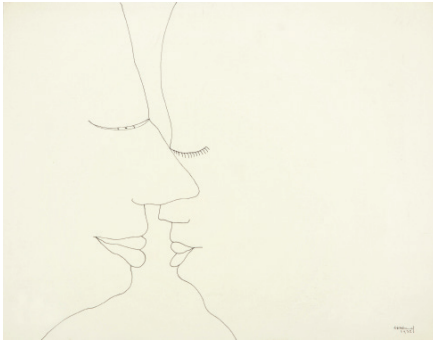
*Baiser volé* (Stolen Kiss), 1971  
9 1/2 x 13 inches (24.1 x 33 cm)  
Ink on Paper  
Private collection



*Untitled*, 1971  
12 1/2 x 9 1/2 inches (31.7 x 24.1 cm)  
Ink on paper  
Private collection



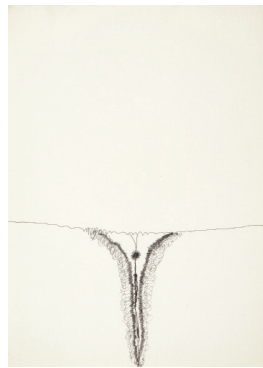
*Paul*, 1971  
13 3/4 x 10 1/2 inches (34.9 x 26.6 cm)  
Ink on paper  
Private collection



*Bouches (Mouths)*, 1972  
10 1/2 x 13 3/4 inches (26.7 x 34.8 cm)  
Ink on paper  
Private collection



*Parfois Mustafa (Sometimes Mustafa)*, 1971  
12 1/2 x 9 1/2 inches (31.7 x 24.1 cm)  
Ink on paper  
Private collection



*Self-Portrait (Bribes de corps) (Self-Portrait (Body Bits))*, 1971  
14 x 10 inches (35.5 x 25.4 cm)  
Ink on paper  
Private collection



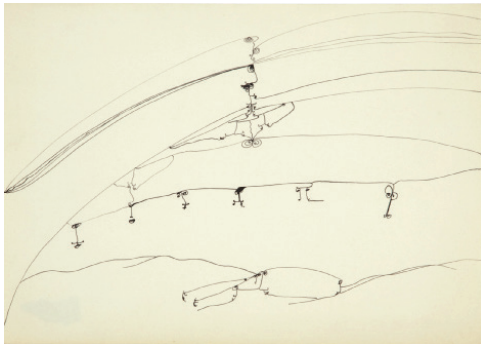
*Upside Down*, 1971  
9 1/2 x 13 inches (24.1 x 33 cm)  
Ink on paper  
Private collection



*Bribes de corps* (Body Bits), 1973  
51 1/2 x 51 inches (130.8 x 129.5 cm)  
Ink and oil on linen  
Private collection



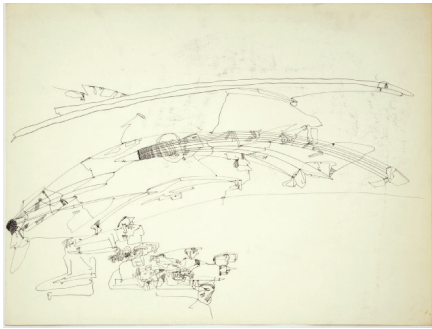
*Bribes de corps* (Body Bits), 1973  
60 x 60 inches (152.4 x 152.4 cm)  
Oil on linen  
Collection of Viveca Paulin-Ferrell and Will Ferrell



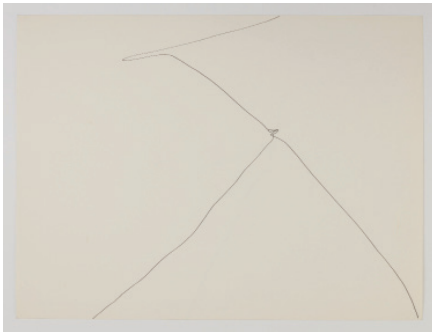
*Untitled*, 1972  
9 1/2 x 12 1/2 inches (24.1 x 30.5 cm)  
Ink on paper  
Private collection



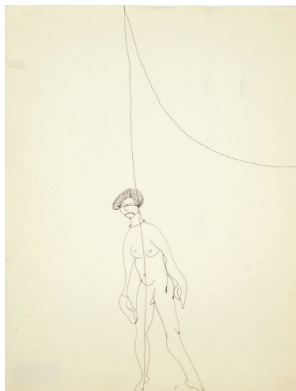
*Untitled*, 1973  
10 x 13 3/4 inches (25.4 x 34.9 cm)  
Ink on paper  
Private collection



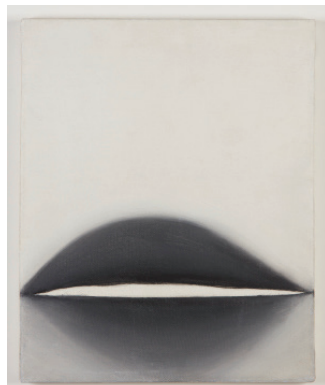
*Untitled*, 1973  
19 3/4 x 25 1/2 inches (50.1 x 64.7 cm)  
Ink on paper  
Private collection



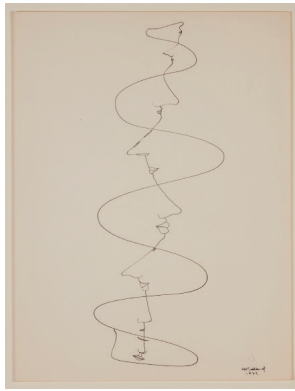
*Untitled*, 1973  
9 1/2 x 12 1/2 inches (24 x 32 cm)  
Ink on paper  
Private collection



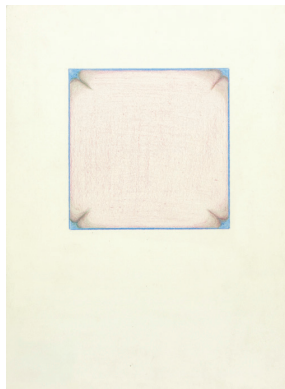
*Untitled*, 1972  
13 3/4 x 10 inches (34.9 x 25.4 cm)  
Ink on paper  
Private collection



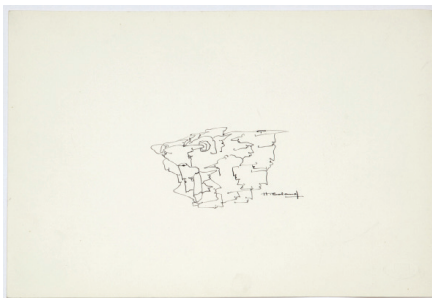
*Bribes de corps* (Body Bits), 1973  
11 3/4 x 9 1/2 inches (29.8 x 24 cm)  
Oil on linen  
Private collection



*Untitled*, 1972  
12 1/2 x 9 1/2 inches (31.7 x 24.1 cm)  
Ink on paper  
Private collection



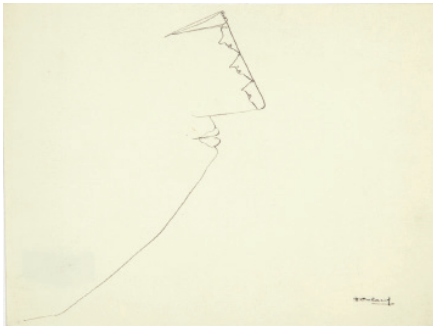
*Bribes de corps* (Body Bits), 1973  
9 1/2 x 7 inches (24.1 x 17.8 cm)  
Color pencil on paper  
Private collection



*Untitled*, 1972  
9 1/2 x 13 1/4 inches (24.1 x 33.7 cm)  
Ink on paper  
Private collection



*"Hi!"*, 1973  
9 1/2 x 12 1/2 inches (24.1 x 31.8 cm)  
Ink on paper  
Private collection



*Untitled*, 1972

7 1/2 x 9 1/2 inches (19 x 24.1 cm)

Ink on paper

Private collection



*Bribes de corps* (Body Bits), 1973

19 1/4 x 13 3/4 inches (49 x 35 cm)

Oil on linen

Private collection



*Untitled*, 1977

12 1/2 x 9 1/2 inches (31.7 x 24.1 cm)

Ink on paper

Private collection



*Untitled*, 1984

9 1/2 x 12 1/2 inches (24.1 x 31.8 cm)

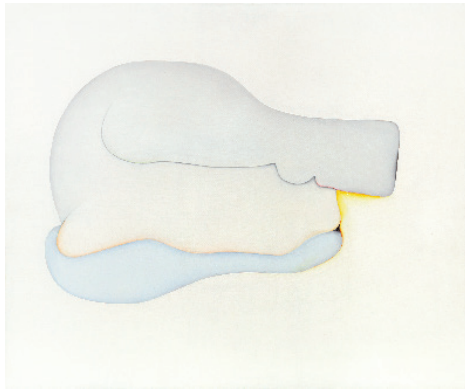
Color pencil on paper

Private collection





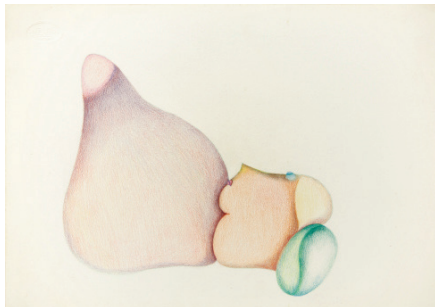
*Untitled*, 1978  
9 1/2 x 12 1/2 inches (24.1 x 31.8 cm)  
Color pencil on paper  
Private collection



*Creature de reve (Dream Creature)*, 1978  
19 1/2 x 23 1/2 inches (49.5 x 59.7 cm)  
Oil on linen  
Private collection



*Untitled*, 1978  
9 1/2 x 13 1/2 inches (24.1 x 34.3 cm)  
Color pencil on paper  
Private collection



*Big Kiss*, 1978  
9 1/2 x 13 1/2 inches (24.1 x 34.3 cm)  
Color pencil on paper  
Private collection



*Untitled*, 1985  
9 1/2 x 12 1/2 inches (24.1 x 31.8 cm)  
Color pencil on paper  
Private collection



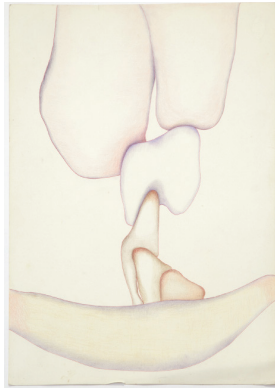
*Untitled*, 1984  
30 x 22 1/4 inches (76.2 x 56.5 cm)  
Color pencil on paper  
Private collection



*Untitled*, 1984  
30 x 22 1/4 inches (76.2 x 56.5 cm)  
Color pencil on paper  
Private collection



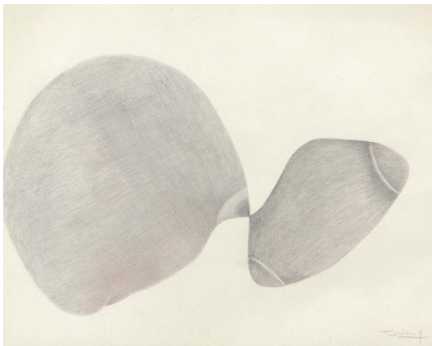
*Untitled*, 1985  
29 3/4 x 22 1/4 inches (75.6 x 56.5 cm)  
Color pencil on paper  
Private collection



*Untitled*, 1984  
19 x 13 1/2 inches (48.2 x 34.3 cm)  
Color pencil on paper  
Private collection



*Tête-à-tête* (Head to Head), 1983  
9 1/2 x 13 1/2 inches (24.1 x 34.3 cm)  
Ink on paper  
Private collection



*Untitled*, 1984  
9 1/2 x 12 1/2 inches (24 x 32 cm)  
Color pencil on paper  
Private collection



*Untitled*, 1985  
15 1/2 x 12 inches (39.3 x 30.5 cm)  
Color pencil on paper  
Private collection



*Recliner, 1972*

9 1/2 x 12 1/2 inches (24.1 x 31.7 cm)

Color pencil on paper

Private collection

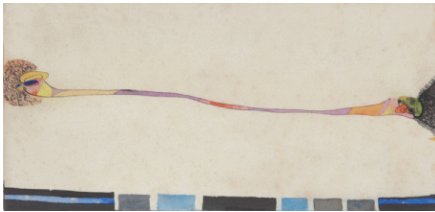


*Untitled, 1985*

19 3/4 x 25 1/2 inches (50.2 x 64.8 cm)

Color pencil on paper

Private collection



*Homage to Pubic Hair, 1992*

5 x 10 1/2 inches (12.7 x 26.7 cm)

Mixed media on paper mounted on panel

Private collection

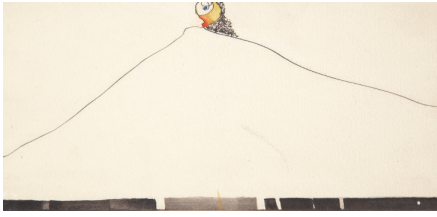


*Homage to Pubic Hair, 1992*

5 x 10 1/2 inches (12.7 x 26.7 cm)

Mixed media on paper mounted on panel

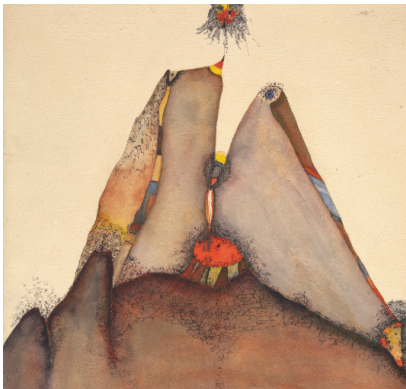
Private collection



*Homage to Pubic Hair, 1992*  
5 x 10 1/2 inches (12.7 x 26.7 cm)  
Mixed media on paper mounted on panel  
Private collection



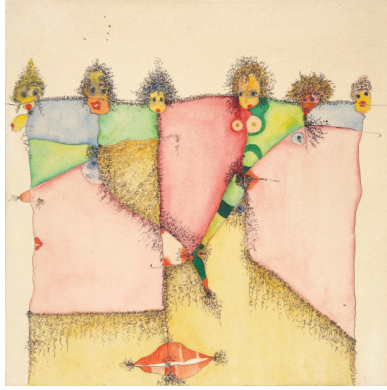
*Homage to Pubic Hair, 1992*  
5 x 10 1/2 inches (12.7 x 26.7 cm)  
Mixed media on paper mounted on panel  
Private collection



*Homage to Pubic Hair, 1992*  
10 x 10 inches (25.4 x 25.4 cm)  
Mixed media on paper mounted on panel  
Private collection



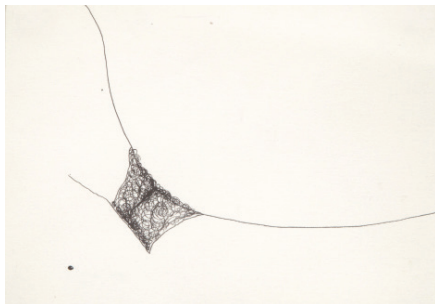
*Homage to Pubic Hair, 1992*  
10 x 10 inches (25.4 x 25.4 cm)  
Mixed media on paper mounted on panel  
Private collection



*Homage to Pubic Hair*, 1992  
10 x 10 inches (25.4 x 25.4 cm)  
Mixed media on paper mounted on panel  
Private collection



*Homage to Pubic Hair*, 1992  
10 x 10 inches (25.4 x 25.4 cm)  
Mixed media on paper mounted on panel  
Private collection



*Untitled*, 1993  
4 3/4 x 6 3/4 inches (12 x 17.1 cm)  
Ink on paper  
Private collection



*Untitled*, 1993  
4 3/4 x 6 3/4 inches (12 x 17.1 cm)  
Ink on paper  
Private collection



*Untitled*, 1993  
4 3/4 x 6 3/4 inches (12 x 17.1 cm)  
Ink on paper  
Private collection



*Christine*, 1992  
10 x 5 inches (25.4 x 12.7 cm)  
Ink on paper mounted on panel  
Private collection



*Christine*, 1992  
10 x 5 inches (25.4 x 12.7 cm)  
Ink on paper mounted on panel  
Private collection



*Christine*, 1992  
10 x 5 inches (25.4 x 12.7 cm)  
Ink on paper mounted on panel  
Private collection



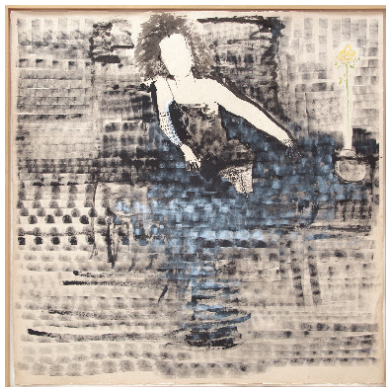
*Christine*, 1992  
10 x 5 inches (25.4 x 12.7 cm)  
Ink on paper mounted on panel  
Private collection



*Christine*, 1992  
10 x 5 inches (25.4 x 12.7 cm)  
Ink on paper mounted on panel  
Private collection

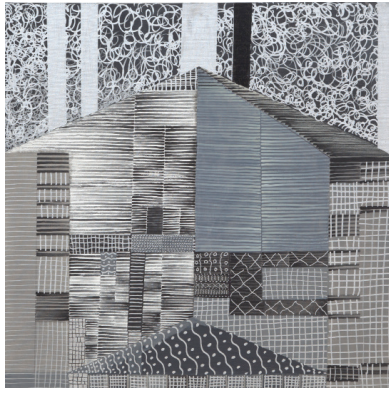


*Christine*, 1992  
10 x 5 inches (25.4 x 12.7 cm)  
Ink on paper mounted on panel  
Private collection



*Christine*, 1998  
81 1/2 x 81 1/2 inches (207 x 207 cm)  
Mixed media on triple-weight Japanese  
Hiromi paper  
Private collection





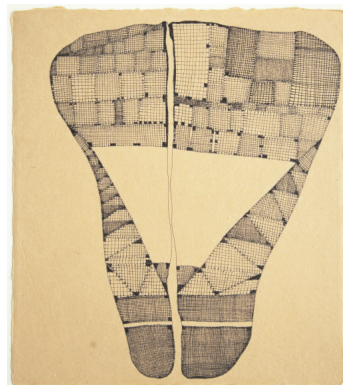
*Untitled*, 1998  
30 x 30 inches (76.2 x 76.2 cm)  
Mixed media on canvas  
Private collection



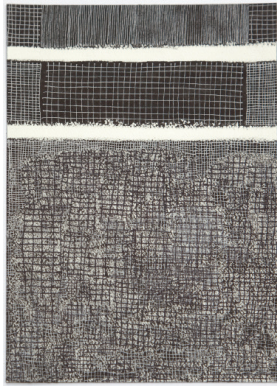
*Face (Untitled Christine)*, 1999  
39 x 40 inches (99.1 x 101.6 cm)  
Mixed media on paper  
Private collection



*Untitled*, 2001  
5 1/2 x 4 1/4 inches (13.9 x 10.8 cm)  
Mixed media on paper  
Private collection



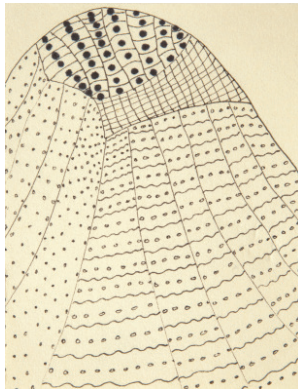
*Untitled*, 2001  
10 3/4 x 9 1/2 inches (27.3 x 24.1 cm)  
Ink on paper  
Private collection



*Untitled*, 1999  
10 1/4 x 7 inches (26 x 17.8 cm)  
Ink on paper  
Private collection



*Untitled*, 1999  
11 x 9 3/4 inches (27.9 x 24.7 cm)  
Mixed media on paper  
Private collection



*Untitled*, 2001  
5 1/2 x 4 1/4 inches (13.9 x 10.8 cm)  
Ink on paper  
Private collection



*The First*, 1970  
54 x 19 x 12 inches (137.1 x 48.2 x 30.5 cm)  
(kaftan)  
Thread on fabric with accompanying wood  
mannequin with foam  
Private collection



*Foule* (Crowd), 1970 (kaftan), 1985  
(mannequin)  
54 x 19 x 12 inches (137.1 x 48.2 x 30.5 cm)  
(kaftan)  
Thread on fabric with accompanying wood  
mannequin with foam  
Hammer Museum, Los Angeles. Purchased  
through the Board of Overseers Acquisition  
Fund.



*Miroir* (Mirror), 1974 (kaftan), 1985  
(mannequin)  
54 x 19 x 12 inches (137.1 x 48.2 x 30.5 cm)  
(kaftan)  
Thread on fabric with accompanying wood  
mannequin with foam  
Hammer Museum, Los Angeles. Purchased  
through the Board of Overseers Acquisition  
Fund.



*Tendresse* (Tenderness), 1975 (kaftan), 1985  
(mannequin)  
54 x 19 x 12 inches (137.1 x 48.2 x 30.5 cm)  
(kaftan)  
Thread on fabric with accompanying wood  
mannequin with foam  
Private collection



*Figurine*, 1983  
12 x 11 x 5 inches (30.5 x 27.9 x 12.7 cm)  
Clay  
Private collection



*Figurine, 1983*  
14 x 8 x 5 inches (35.5 x 20.3 x 12.7 cm)  
Clay  
Private collection



*Figurine, 1983*  
12 x 9 x 4 inches (30.5 x 22.8 x 10.1 cm)  
Clay and acrylic paint  
Private collection



*Figurine, 1983*  
13 x 6 x 3 inches (33 x 15.2 x 7.6 cm)  
Clay and acrylic paint  
Private collection



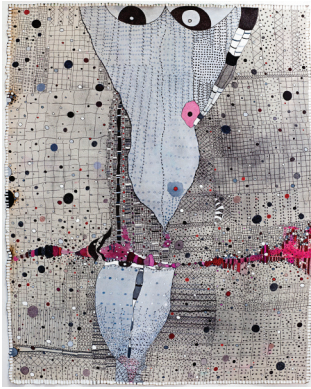
*Figurine, 1983*  
11 x 9 x 5 inches (27.9 x 22.8 x 12.7 cm)  
Clay  
Private collection



*I*, 1999  
74 x 38 inches (188 x 96.5 cm)  
Ink on paper  
Private collection



*Rossinante Under Cover VIII*, 2011  
52 x 41 inches (132.1 x 104.1 cm)  
Mixed media on canvas  
Collection Nicole Nagel



*Rossinante Under Cover XII*, 2011  
52 x 41 inches (132.1 x 104.1 cm)  
Mixed media on canvas  
Private collection



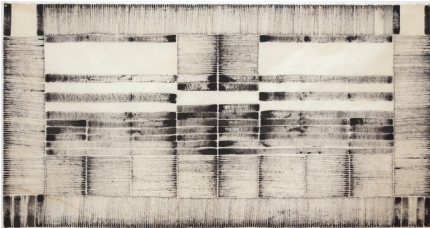
*Bodrum*, 2008  
72 x 87 inches (182.9 x 221 cm)  
Mixed media on canvas  
Private collection



*Rossinante Under Cover V*, 2011  
52 x 41 inches (132.1 x 104.1 cm)  
Mixed media on canvas  
Private collection



*Rossinante Under Cover XI*, 2011  
52 x 41 inches (132.1 x 104.1 cm)  
Mixed media on canvas  
Private collection



*Untitled*, 1999  
38 x 74 inches (96.5 x 188 cm)  
Ink on paper  
Private collection



*Kantari, la mariée, avril 1952 (Kantari, the bride, April 1952)*, 2010  
99 x 38 1/2 inches (252 x 98 cm)  
Mixed media on canvas  
Private collection



Untitled No.4 , 2009  
11 3/8 x 16 1/8 inches (29 x 41 cm)  
Mixed media on canvas  
Collection of Judi Roaman and Carla Chammas



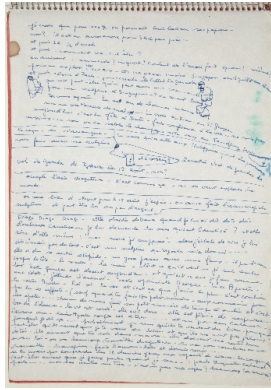
*Untitled*, 2010  
11 x 16 1/4 inches (27.9 x 41.3 cm)  
Mixed media on canvas  
Private collection



*City*, 2010  
49 2/3 x 36 1/4 inches (126 x 92 cm)  
Mixed media on canvas  
Private collection



*Appleton I*, 2009  
72 x 72 inches (182.9 x 182.9 cm)  
Mixed media on canvas  
Private collection



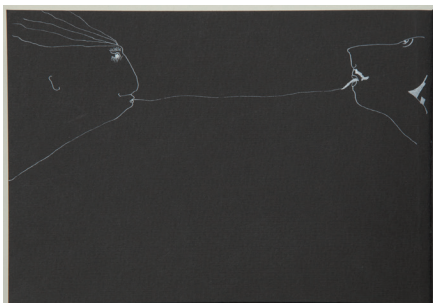
Sketchbook 9, 1982–83  
9 5/8 x 13 3/4 in (closed), 9 5/8 x 27 in  
(open) (24.4 x 34.9 cm [closed], 24.4 x 68.6  
cm [open])  
Ink on paper  
Private collection



Sketchbook 1, 1985-1986  
8 1/2 x 11 3/4 inches (closed) 21.6 x 29.8 cm  
(closed)  
Ink on paper  
Private Collection

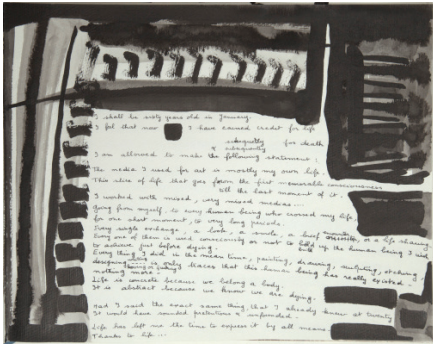


Sketchbook 5, 1986  
6 1/4 x 9 in (closed), 6 1/4 x 17 3/4 in (open)  
(15.9 x 22.9 cm [closed], 15.9 x 45.1 cm  
[open])  
Ink on paper  
Private collection



Sketchbook 6, 1990  
6 1/4 x 9 inches (closed) 15.9 x 22.9 cm  
(closed)  
Ink on paper  
Private Collection

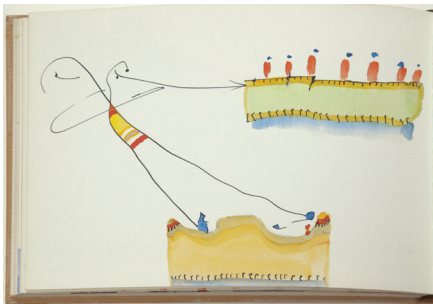




Sketchbook 2, 1990–1991  
 11 x 14 in (closed), 11 x 28 in (open)  
 (27.9 x 35.6 cm [closed], 27.9 x 71.1 cm [open])  
 Ink on paper  
 Private collection



Sketchbook 8, 1992  
 8 1/8 x 12 in (closed), 8 1/8 x 24 in (open)  
 (20.6 x 30.5 cm [closed], 20.6 x 61 cm [open])  
 Mixed media on paper  
 Private collection



Sketchbook 7, 1992  
 6 1/4 x 9 inches (closed) 15.9 x 22.9 cm  
 (closed)  
 Ink on paper  
 Private Collection



*Le Cirque*, 1971  
 13 3/4 x 10 1/2 inches (34.9 x 26.6 cm)  
 Ink on paper  
 Collection of Judi Roman and Carla Chammas