



Taka Ishii  
Gallery

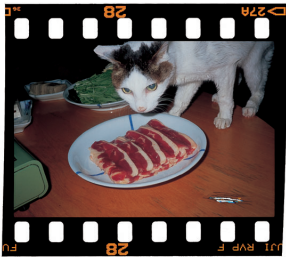
Maebashi

5-9-1 1F Chiyoda-machi Maebashi-shi Gunma #371-0022, Japan  
tel: +81 (0)27 289 3521 fax: +81 (0)27 289 5560  
email: maebashi@takaishiigallery.com  
www.takaishiigallery.com

**“FOOD for THOUGHT”**

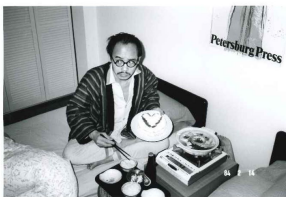
**Dates: Sep 17 — Nov 12, 2023**

**List of Works**



Nobuyoshi Araki (荒木経惟)  
“Pseudo Dates (偽日記)”, 2011  
RP Direct print (RPダイレクトプリント)  
13 x 18 cm  
Framed

NA-1105 FN-11-001



Nobuyoshi Araki (荒木経惟)  
“Past tense - Future (過去・未来 写狂老人日記)”, 1979  
-2011/2012  
Gelatin silver print (ゼラチンシルバープリント)  
Image size: 27 x 40.6 cm  
Paper size: 35.6 x 43 cm  
Framed

NA-PtF\_07



Nobuyoshi Araki (荒木経惟)  
“Past tense - Future (過去・未来 写狂老人日記)”, 1979  
-2011/2012  
Gelatin silver print (ゼラチンシルバープリント)  
Image size: 27 x 40.6 cm  
Paper size: 35.6 x 43 cm  
Framed

NA-PtF\_09



Nobuyoshi Araki (荒木経惟)  
“From winter to spring (冬春)”, 2004  
Gelatin silver print (ゼラチンシルバープリント)  
Image size: 22.1 x 33.4 cm  
Paper size: 27.8 x 35.7 cm  
Framed

NA-FW\_020



Nobuyoshi Araki (荒木経惟)  
“The Banquet (食事)”, 1993/2018  
RP-Pro Crystal print (RPプロクリスタルプリント)  
Image size: 15.6 x 23.4 cm  
Paper size: 20.2 x 25.4 cm  
Framed

NA-93\_BQT\_001



Nobuyoshi Araki (荒木経惟)  
“The Banquet (食事)”, 1993/2018  
RP-Pro Crystal print (RPプロクリスタルプリント)  
Image size: 15.6 x 23.4 cm  
Paper size: 20.2 x 25.4 cm  
Framed

NA-93\_BQT\_002



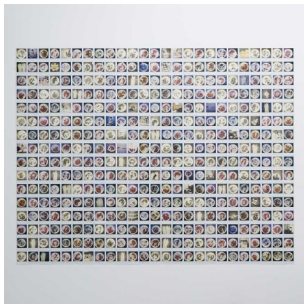
Nobuyoshi Araki (荒木経惟)  
“The Banquet (食事)”, 1993/2018  
RP-Pro Crystal print (RPプロクリスタルプリント)  
Image size: 15.6 x 23.4 cm  
Paper size: 20.2 x 25.3 cm  
Framed

NA-93\_BQT\_003



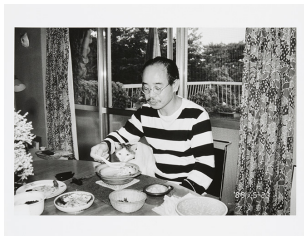
Nobuyoshi Araki (荒木経惟)  
“The Banquet (食事)”, 1993/2018  
RP-Pro Crystal print (RPプロクリスタルプリント)  
Image size: 15.5 x 23.4 cm  
Paper size: 20.2 x 25.4 cm  
Framed

NA-93\_BQT\_004



Nobuyoshi Araki (荒木経惟)  
“Petite Tomatoes (プチトマト)”, 2019  
400 Impossible  
10.8 x 8.8 cm each  
Unique

NA-PH\_19\_PT



Nobuyoshi Araki (荒木経惟)  
“Chiro, My Love (愛しのチロ)”, 1989/2015  
Gelatin silver print (ゼラチンシルバープリント)  
Image size: 18.7 x 28.2 cm  
Paper size: 25.3 x 30.6 cm  
Framed

NA-Chiro\_MyLove\_064



Nobuyoshi Araki (荒木経惟)  
“Chiro, My Love (愛しのチロ)”, 1989/2015  
Gelatin silver print (ゼラチンシルバープリント)  
Image size: 18.7 x 28.2 cm  
Paper size: 25.3 x 30.6 cm

NA-Chiro\_MyLove\_071



Mario García Torres (マリオ・ガルシア・トレス)  
“Carta Abierta a Hermenegildo Bustos (エルメネジルド・ブストスへの公開書簡)”, n.d.  
Video (映像) (6’49”)  
Edition 5, A.P.2

MGT-VD\_23\_001



Tomoo Gokita (五木田智央)  
“Dried Persimmon (干し柿)”, 2022  
Acrylic on paper (紙にアクリル)  
31.8 x 23.8 cm  
Framed

TG-WP\_22\_154



Tomoo Gokita (五木田智央)  
“Eating Pleasure”, 2023  
Acrylic on canvas (キャンバスにアクリル)  
162 x 194 cm

TG-PA\_23\_013



Goro Kakei (掛井五郎)  
“I’m gonna eat you! (食べちゃうぞ!)”, 2009  
Wood (木)  
152.5 x 92 x 3 cm

GRK-SC\_09\_006



Goro Kakei (掛井五郎)  
“Untitled (無題)”, 2010s  
Wood (木)  
32.2 x 12.3 x 5.2 cm

GRK-SC\_XX\_022



Matthew Lutz-Kinoy and Natsuko Uchino (マシュー・ルッツ・キノイ& ナツコ・ウチノ)  
“Keramikos 3 (ケラミコス 3)”, 2018  
Glazed ceramic (釉薬を施した陶器)  
20.5 x 15.5 x 14 cm

KRM-CE\_18\_PT\_05



Matthew Lutz-Kinoy and Natsuko Uchino (マシュー・ルッツ・キノイ& ナツコ・ウチノ)  
“Keramikos 2 (ケラミコス 2)”, 2012  
Glazed ceramic, gold lacquer repaired (kintsugi) (釉薬を施した陶器、金継ぎ加工)  
Repaired by Mio Heki in 2022 (日置美緒により2022年修復)  
20.7 x 21.3 x 10.8 cm

KRM-CE\_12\_002



Matthew Lutz-Kinoy and Natsuko Uchino (マシュー・ルッツ・キノイ& ナツコ・ウチノ)  
“Keramikos 2 (ケラミコス 2)”, 2012  
Glazed ceramic, gold lacquer repaired (kintsugi) (釉薬を施した陶器、金継ぎ加工)  
Repaired by Mio Heki in 2022 (日置美緒により2022年修復)  
4.7 x  $\Phi$  25.3 cm

KRM-CE\_12\_003



Matthew Lutz-Kinoy and Natsuko Uchino (マシュー・ルッツ・キノイ& ナツコ・ウチノ)

“Keramikos 2(ケラミコス 2)”, 2012

Glazed ceramic, gold lacquer repaired (kintsugi)(釉薬を施した陶器、金継ぎ加工)

Repaired by Mio Heki in 2022(日置美緒により2022年修復)

4.7 x Φ 5.7 x 21 x 16 cm

KRM-CE\_12\_004



Matthew Lutz-Kinoy and Natsuko Uchino (マシュー・ラッツ・キノイ& ナツコ・ウチノ)

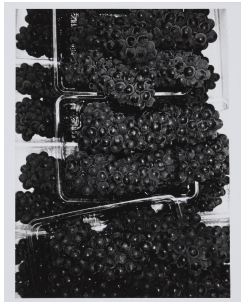
“Keramikos 2(ケラミコス 2)”, 2012

Glazed ceramic, gold lacquer repaired (kintsugi)(釉薬を施した陶器、金継ぎ加工)

Repaired by Mio Heki in 2022(日置美緒により2022年修復)

5.3 x 20.3 x 15.5 cm

KRM-CE\_12\_005



Daido Moriyama (森山大道)

“Daido hysteric no.4 1993”, 1991/2003

Gelatin silver print

Image size: 60 x 44.4 cm

Paper size: 60.7 x 50.8 cm

Framed

DM-3.3007



Daido Moriyama (森山大道)

“写真家(フォトグラム)”, 1990

Gelatin silver print (ゼラチンシルバープリント)

Image & paper size: 30.4 x 25.4 cm

Framed

DM-2.2910参考



Daido Moriyama (森山大道)

"A Journey to Nakaji 5 (Photogram 1 Bottle) (仲治への旅 5(フォトグラム 1 ボトル))", 1984

Gelatin silver print (ゼラチンシルバープリント)

Image size: 29.6 x 21 cm

Paper size: 30.5 x 25.4 cm

Framed

DM-2.2437+



Daido Moriyama (森山大道)

"71-NY", 1971/2002

Gelatin silver print (ゼラチンシルバープリント)

Image size: 21.6 x 29.6 cm

Paper size: 25.4 x 30.5 cm

Framed

DM-4\_5556



Daido Moriyama (森山大道)

"71-NY", 1971/2002

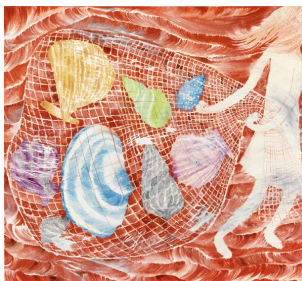
Gelatin silver print (ゼラチンシルバープリント)

Image size: 21.7 x 29.7 cm

Paper size: 25.3 x 30.5 cm

Framed

DM-4\_5529



Kyoko Murase (村瀬恭子)

"Fishing (Sunset)(漁(日没))", 2013

Oil, colored pencil on cotton (綿布に油彩、色鉛筆)

110 x 120 cm

KM-160



Yoshitomo Nara (奈良美智)  
“SAKHALIN (サハリン)”, 2014/2018  
Pigment print (ピグメントプリント)  
Image size: 50 x 75 cm  
Paper size: 50.4 x 75.4 cm  
Edition 1 of 7  
Framed

YN-Sakhalin\_019



Ikko Narahara (奈良原一高)  
“Domains (王国)”, 1958  
Gelatin silver print (ゼラチンシルバープリント)  
Image size: 16.9 x 24.8 cm  
Paper size: 25.1 x 30.8 cm  
Framed

IN-D-1-25-V\_001



Ikko Narahara (奈良原一高)  
“Domains (王国)”, 1956-58  
Gelatin silver print (ゼラチンシルバープリント)  
Image size: 25.9 x 17.2 cm  
Paper size: 30.4 x 25.3 cm  
Framed

IN-D-1-28RCB-1



Ikko Narahara (奈良原一高)  
“Floating Apple (浮かぶ林檎)”, 1977  
C-print (C プリント)  
Image size: 25 x 17.4 cm  
Paper size: 30.5 x 25.1 cm  
Framed

IN-Floating Apple





William J. O'Brien (ウィリアム・J・オブライエン)  
“Sound Bowl (サウンド・ボウル)”, 2021  
Ceramic (陶器)  
29.2 x 63.5 x 55.9 cm

WOB-CE\_21\_0714



William J. O'Brien (ウィリアム・J・オブライエン)  
“Offering Bowl (供物碗)”, 2021  
Ceramic (陶器)  
12.7 x 34.3 x 33 cm

WOB-CE\_21\_0733



William J. O'Brien (ウィリアム・J・オブライエン)  
“Offering Bowl (供物碗)”, 2011  
Ceramic (陶器)  
8.9 x 20.3 x 20.3 cm

WOB-CE\_11\_0755



Sterling Ruby (スターリング・ルビー)  
“DRFTRS (5032)”, 2014  
Collage, paint and glue on paper (紙にコラージュ、着彩、接着剤)  
27.9 x 43.2 cm  
Framed

SR-CL\_14\_5032



Sterling Ruby (スターリング・ルビー)  
“DRFTRS (6243)”, 2016  
Collage, paint and glue on paper (紙にコラージュ、着彩、接着剤)  
33.7 x 52.4 cm  
Framed

SR-CL\_16\_6243



Yutaka Takanashi (高梨豊)  
“Tokyoites 1978-1983 (東京人 1970-1983)”, 1976/1980s  
Gelatin silver print (ゼラチンシルバープリント)  
Image size: 20.2 x 30.6 cm  
Paper size: 27.7 x 35.4 cm  
Framed

YTT-Shin-Tokyo-jin-003-01



Hitoshi Tsukiji (築地仁)  
“Shashinzo (写真像)”, 1984  
Gelatin silver print (ゼラチンシルバープリント)  
Image size: 24.8 x 24.8 cm  
Paper size: 35.4 x 27.8 cm  
Framed

HTJ-PHv\_SZ\_044



Shoji Hamada (濱田庄司)  
“Large dish with brushwork wax resist decoration of 2 stem leaf  
pattern design (ロウ抜き黍紋大皿)”, unknown  
Ceramic (陶器)  
6 x Φ28.7 cm

SH-CE\_XX\_001



Shoji Hamada (濱田庄司)  
“Flower vase with wax resist brushwork stem leaf design (ロウ抜き黍紋花入れ)”, unknown  
Ceramic (陶器)  
20 x 10.2 x 9.3 cm

SH-CE\_XX\_003



Shoji Hamada (濱田庄司)  
“Dish with wax resist brushwork stem leaf design (ロウ抜き黍紋皿)”, unknown  
Ceramic (陶器)  
4 x  $\Phi$  25.5 cm

SH-CE\_XX\_002



Shoji Kamoda (加守田章二)  
“Large dish with greenish glaze over an incised pattern design (灰釉彫文皿)”, c. 1960s  
Ceramic (陶器)  
6 x  $\Phi$  28.2 cm

SKM-CE\_1960s\_001



Jiro Kinjo (金城次郎)  
“Bowl, white glaze with finger wipe decoration near rim (指描き茶碗一抹茶碗)”, c. 1970s  
Ceramic (陶器)  
9 x  $\Phi$  16 cm

JKJ-CE\_1970s\_001



Jiro Kinjo (金城次郎)

“Bowl, white glaze with finger wipe decoration near rim (指描き 茶碗一抹茶碗)”, c. 1970s

Ceramic (陶器)

8.2 x  $\Phi$  16 cm

JKJ-CE\_1970s\_002



Jiro Kinjo (金城次郎)

“Large bowl with brushwork decoration (ワンブー (沖縄大鉢) 呉須絵付け)”, c.1970s

Ceramic (陶器)

10.7 x  $\Phi$  25 cm

JKJ-CE\_1970s\_003



Jiro Kinjo (金城次郎)

“Sake cup, white glaze (ぐい呑み)”, unknown

Ceramic (陶器)

5.3 x  $\Phi$  8.9 cm

JKJ-CE\_XX\_001



Jiro Kinjo (金城次郎)

“Sake cup, white glaze (ぐい呑み)”, unknown

Ceramic (陶器)

5.2 x  $\Phi$  8.6 cm

JKJ-CE\_XX\_002



Jiro Kinjo (金城次郎)  
“Sake cup, white glaze (ぐい呑み)”, unknown  
Ceramic (陶器)  
4.8 x  $\Phi$ 8.2 cm

JKJ-CE\_XX\_003



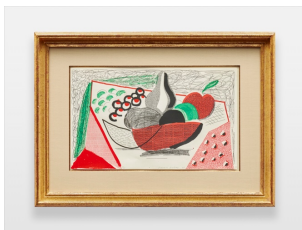
Tatsuzo Shimaoka (島岡達三)  
“Large square dish with over glaze enamel brushwork decoration (akae) (赤絵角皿)”, unknown  
Ceramic (陶器)  
6.5 x 28 x 27.5 cm

TSO-CE\_XX\_001



Georges Braque (ジヨルジュ・ブラック)  
“Black Teapot and Lemons (ティーポットとレモン)”, 1949  
Lithograph (リトグラフ)  
49.5 x 64.8 cm  
Framed

GB-LG\_49\_001



David Hockney (デイヴィッド・ホックニー)  
“Apples, Pears & Grapes (林檎、洋梨、葡萄)”, 1986  
Homemade print (ホームメイド・プリント)  
21.5 x 35.4 cm  
Framed

DH-PM\_86\_001



Pablo Picasso (パブロ・ピカソ)  
“Pigeon (鳩)”, 1948  
Ceramic (陶器)  
30.4 x 37.3 cm  
Framed

PP-CE\_48\_001



Pablo Picasso (パブロ・ピカソ)  
“Wood Owl with Feathers (ふくろうの羽)”, 1951  
Ceramic (陶器)  
H28.8 x 23 x 16 cm

PP-CE\_51\_001



Kenji Funaki (船木研兒)  
“Square vase, Lead-glazed straw pattern (鉄鉛釉 藁描角花瓶)”,  
c.1970  
Ceramic (陶器)  
20.4 x 19 x 9 cm

KF-CE\_XX\_001



Shoji Hamada (濱田庄司)  
“Serving dishes, Ryukyu Tsuboya Kiln, indigo iron-paint (琉球壺屋窯 藍鉄絵取皿)”, 1959  
Ceramic (陶器)  
4.3 x  $\Phi$  18.8 cm, 4.3 x  $\Phi$  18.9 cm, 3.9 x  $\Phi$  19 cm, 4.2 x  $\Phi$  19.3 cm,  
4.1 x  $\Phi$  19 cm, 4.1 x  $\Phi$  19.2 cm  
Set of 6

SH-CE\_XX\_001



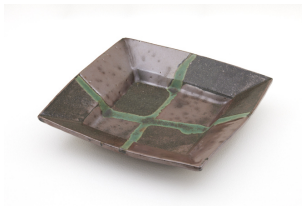
Shoji Hamada (濱田庄司)  
“Flower vase with wax resist brushwork, kaki brown reddish glaze  
(柿釉拔繪花瓶)”, unknown  
Ceramic (陶器)  
23.5 x 18.5 x 18.1 cm

SH-CE\_XX\_002



Shoji Hamada (濱田庄司)  
“Jar with white glaze drawing (白釉流描扁壺)”, c.1960s  
Ceramic (陶器)  
22.5 x 14.5 x 8 cm

SH-CE\_XX\_003



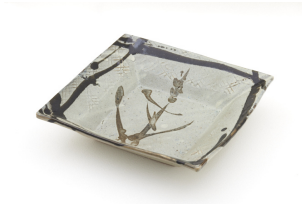
Shoji Hamada (濱田庄司)  
“Square dish, kaki brown reddish glaze and blue glaze (柿釉青差角  
盛皿)”, unknown  
Ceramic (陶器)  
6.3 x 30.4 x 30.1 cm

SH-CE\_XX\_004



Shoji Hamada (濱田庄司)  
“Dish with black glaze and rust drawing (黒釉錆流描皿)”, unknown  
Ceramic (陶器)  
7.1 x  $\Phi$ 33.7 cm

SH-CE\_XX\_005



Shoji Hamada (濱田庄司)

“Square dish with black grid, namako glaze and iron painting (海鼠釉鉄繪 黒格子角皿)”, c.1960s

Ceramic (陶器)

8.0 x 32.4 x 32 cm

SH-CE\_XX\_006



Shoji Hamada (濱田庄司)

“Jar with yakishime (unglazed, high-fired) glaze (焼酎釉描扁壺)”, c.1950s

Ceramic (陶器)

19.6 x 12 x 7 cm

SH-CE\_XX\_007



Shoji Hamada (濱田庄司)

“Bowl with iron painting (鉄繪盛鉢)”, c.1940s

Ceramic (陶器)

7.2 x  $\Phi$  25.2 cm

SH-CE\_40s\_001



Shoji Hamada (濱田庄司)

“Salt-glazed jar with iron and indigo painting (塩釉 鉄繪藍差扁壺)”, c.1950s

Ceramic (陶器)

23.4 x 16.3 x 13.4 cm

SH-CE\_50s\_001





Shoji Hamada (濱田庄司)  
“White-glazed pitcher, iron brushing (白釉 鉄打片口)”, c.1960s  
Ceramic (陶器)  
11.7 x 20.2 x 24 cm

SH-CE\_60s\_001



Kanjiro Kawai (河井寛次郎)  
“Cinnabar jar (辰砂筒描扁壺)”, 1950  
Ceramic (陶器)  
20.2 x 15.3 x 14.5 cm

KK-CE\_50\_001



Kanjiro Kawai (河井寛次郎)  
“Bowl with comb mark (櫛目椀)”, c.1939  
Ceramic (陶器)  
7.5 x  $\Phi$  14 cm

KK-CE\_XX\_001



Kanjiro Kawai (河井寛次郎)  
“Jar with comb mark (櫛目壺)”, c.1939  
Ceramic (陶器)  
22.7 x 18.8 x 16.7 cm

KK-CE\_39\_001



Kanjiro Kawai (河井寛次郎)  
“Gosu (asbolite)-glazed rice bowl(呉須 花椀)”, late 1940s  
Ceramic (陶器)  
8.9 x  $\Phi$  15.5 cm

KK-CE\_XX\_002



Kanjiro Kawai (河井寛次郎)  
“Gosu (asbolite)-glazed jar(呉須 扁壺)”, 1957  
Ceramic (陶器)  
23.9 x 20.5 x 16.2 cm

KK-CE\_57\_001



Kanjiro Kawai (河井寛次郎)  
“Cinnabar bowl with rhombic floral crest(辰砂 菱花鉢)”, c.1941  
Ceramic (陶器)  
6.9 x  $\Phi$  20.7 cm

KK-CE\_41\_001



Kanjiro Kawai (河井寛次郎)  
“Dishes with flush-drawing(流し描き皿)”, c.1931  
Ceramic (陶器)  
2.3 x  $\Phi$  15.3 cm, 2.5 x  $\Phi$  15.3 cm, 2.6 x  $\Phi$  15.4 cm, 2.7 x  $\Phi$  15.4  
cm, 2.5 x  $\Phi$  15.3 cm, 2.5 x  $\Phi$  15.4 cm  
Set of 6

KK-CE\_31\_001



Kanjiro Kawai (河井寛次郎)  
“Gosu cup (呉須杯)”, late 1941s  
Ceramic (陶器)  
7.8 x  $\Phi$ 4.7 cm

KK-CE\_41s\_003



Tatsuzo Shimaoka (島岡達三)  
“Inlaid plate (象嵌皿)”, c.late 1950s~1960  
Ceramic (陶器)  
4.5 x  $\Phi$ 27.2 cm

TSO-CE\_XX\_001



Tatsuzo Shimaoka (島岡達三)  
“Inlaid display plate (象嵌飾皿)”, c.late 1950s~1961  
Ceramic (陶器)  
9.9 x  $\Phi$ 40.9 cm

TSO-CE\_XX\_002



Muneyoshi Yanagi (柳宗悦)  
“茶ニテアレ 茶ニテナカレ”, 1950s  
Ink on paper (紙に墨)  
53.8 x 42.2 cm  
Framed

MYG-CG\_XX\_001



Muneyoshi Yanagi (柳宗悦)  
“カヲルヤ梅ヶ香 雪ヲエニシニ”, 1950s  
Ink on paper (紙に墨)  
68.5 x 55.5 cm  
Framed

MYG-CG\_XX\_002