



Adams and Ollman

Kenji Ide: *American Friend* January 20–February 17, 2024

For inquiries:

Amy Adams
amy@adamsandollman.com
+1 215 426 4244

Andrea Glaser
aglaser@adamsandollman.com
+1 503 569 4050

Adams and Ollman is pleased to announce *American Friend*, a solo exhibition of new sculptures by Japanese artist Kenji Ide (b. 1981, Yokosuka, JP; lives and works in Tokyo, JP). The exhibition will include sculptures composed of wood and found objects that theatrically weave a narrative based on both the artist's imagined and real-life experiences. Ide's first exhibition in Portland, OR, *A Poem of Perception*, was curated by Matt Jay for the Portland Japanese Garden in 2022. His new exhibition at Adams and Ollman opens with a reception with the artist on Saturday, January 20 and is on view through February 17, 2024.

The exhibition takes its title from *The American Friend*, the 1977 Wim Wenders film that Ide knew of as a teenager growing up in Japan, but had never seen. With no knowledge of the narrative arch—Ide was only familiar with the title and the main character, the American actor Dennis Hopper—Ide let himself imagine the plot of the movie—fantasizing that the German filmmaker made the film as if he were sending a letter to Hopper, thinking of the America he longed to visit. Much as Ide created a storyline of Wenders' film with extremely limited information, his minimal sculptures provide a similar space for an imagined narrative, one produced collaboratively by both the artist and the viewer. In *American Friend*, the works operate as invented memories of a fictional American acquaintance and like the artist's past work, they create a basic structure that suggests an evocative narrative or experience while maintaining a poetic abstraction. Ide refers to this speculative process as "crystallization," materializing the immaterial, even if only briefly.

Restraint and precision characterize Ide's carefully considered sculptural works. Various components are positioned meticulously in relation to one another and call to mind models, toys or puzzles. Small-scale representations of structures and objects that might be found in the built environment, such as a tower, ramp, or light post, suggest a stage, a place or a memory, their sensory building blocks distilled to their essences. Abstracted forms that hint at floors or foundations, walls, and beams serve to delineate and define space, while hints of interior structures conjure the association of private places where actions and gestures remain unseen or intimately experienced. Sometimes Ide's assemblages recall several objects at once, inviting ambiguity within their familiarity, or imply movement or interaction, hinting at some unknown function or logic, a barely perceptible past and future.

Within each of the structures, small interventions are carefully made—a hand sculpted ball is affixed to a horizontal element that resembles a balustrade, a scrap of fabric registers as a drape or flag, a small stack of carefully collected pieces of a torn up letter, perhaps, are neatly, but mysteriously arranged as accumulated thoughts or reminders. Carved into the wood are patterns such as a meander, a decorative border constructed from a continuous line recalling the walks that the artist takes for inspiration and to source his material. Tiny carved hands are theatrically placed throughout the works and imply a visceral but removed sensation or interaction.

Taken together, Ide's sculptures in *American Friend* create a stylized landscape in miniature resembling the carefully composed features of Zen gardens, which classically serve as an aid to meditation, creating complex ontological maps for considering the natural world and our relation to it. Philosophy and spirituality coexist with the physicality of natural elements, creating a tension that points directly to the thin line that separates reality from our imposed beliefs, meanings, and narratives about the world. Space acts as a void in which to consider the infinitude of possibilities, the passage of time, and ephemerality. In all of Ide's works, emptiness hangs at the edge of legibility, inviting personal reflection into the nuances of human relationships, and the role of imagination and projection in creating, mediating, and maintaining those relations.

Kenji Ide (b. 1981, Yokosuka, JP; lives and works in Tokyo, JP) received an MFA from Tama Art University. He has had solo exhibitions at The Portland Japanese Garden, Portland, OR; KAYOKOYUKI; Goya Curtain; and the Art Center Ongoing, all Tokyo, Japan. His work has been featured in group exhibitions at Wschód, Warsaw, Poland; KNULP, Sydney, Australia; Crevecoeur, Paris, France; Guimarães, Vienna, Austria; Freedman Fitzpatrick, Los Angeles, CA; and XYZ collective, Tokyo, Japan. Ide has participated in residencies at CAC, Chiang Mai, Thailand; 98B, Manila, Philippines; Kunci Cultural Study, Jakarta, Indonesia; and Taipei Artist Village, Taipei, Taiwan.



Kenji Ide
A year later, I feel your behavior, 2024
wood, sandpaper, watercolor, varnish
6 1/2h x 7 1/4w x 23 1/4d in
16.51h x 18.42w x 59.06d cm
KID2024001



Kenji Ide, *A year later, I feel your behavior*, 2024



Detail: Kenji Ide, *A year later; I feel your behavior*, 2024



Kenji Ide
The winds dances, far connected, 2023
wood, paper, watercolor, varnish
7 7/8h x 6 11/16w x 11 7/8d in
20h x 16.99w x 30.16d cm
KID2023001



Kenji Ide, *The winds dances, far connected*, 2023



Detail: Kenji Ide, *The winds dances, far connected*, 2023



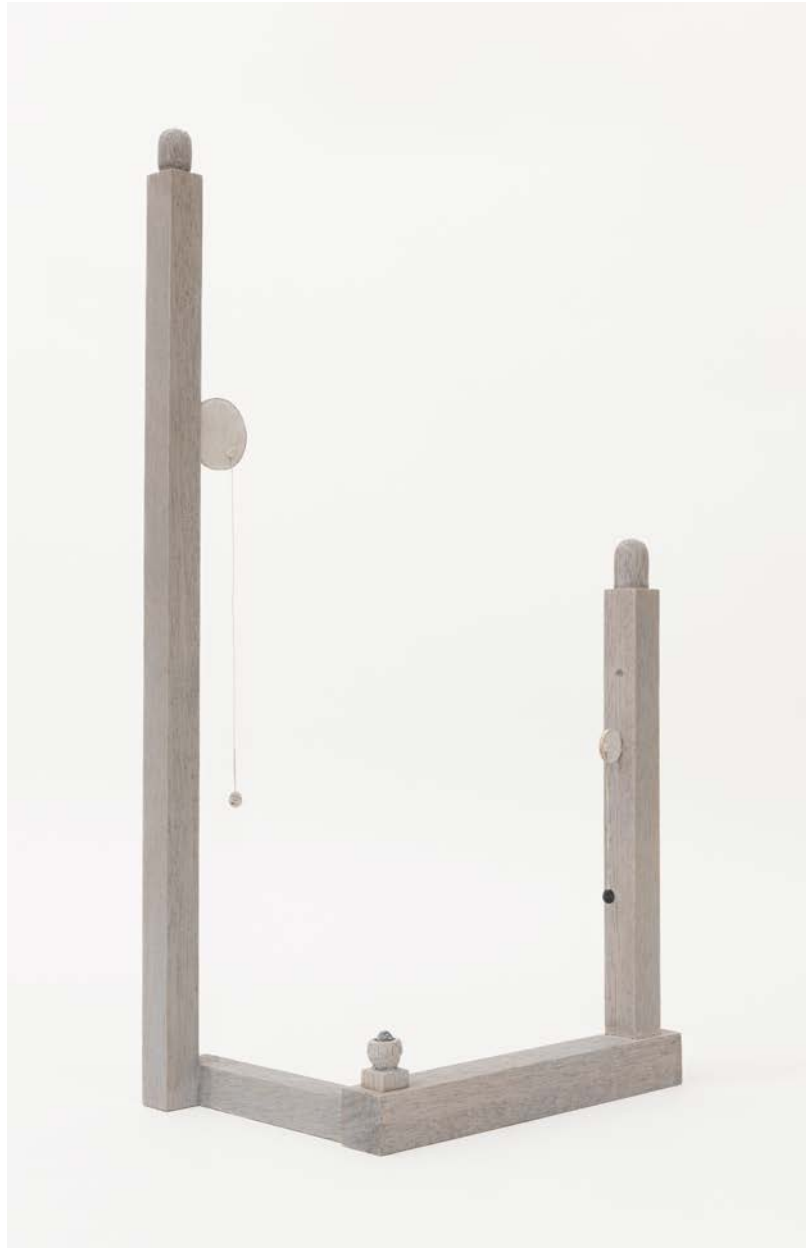
Kenji Ide
Talking without knowing who it is, 2023
wood, paper, watercolor, varnish
7 7/8h x 3 1/2w x 9 1/4d in
20h x 8.89w x 23.50d cm
KID2023002



Kenji Ide, *Talking without knowing who it is*, 2023



Detail: Kenji Ide, *Talking without knowing who it is*, 2023



Kenji Ide
Head inside head, extra thoughts, 2023
wood, clay, thread, watercolor, varnish
17 1/8h x 9 1/2w x 7 7/8d in
43.50h x 24.13w x 20d cm
KID2023003

Detail: Kenji Ide, *Head inside head, extra thoughts*, 2023





Detail: Kenji Ide, *Head inside head, extra thoughts*, 2023



Kenji Ide
Night walk with a piece of dream, 2024
wood, watercolor, varnish
2 3/4h x 5 1/2w x 5 1/8d in
6.99h x 13.97w x 13.02d cm
KID2024002



Kenji Ide, *Night walk with a piece of dream*, 2024



Detail: Kenji Ide, *Night walk with a piece of dream*, 2024



Kenji Ide
At night with the slope, 2023
wood, found object, watercolor, acrylic
paint, varnish
2 3/4h x 4 3/4w x 5 5/16d in
6.99h x 12.07w x 13.49d cm
KID2023004



Kenji Ide, *At night with the slope*, 2023



Detail: Kenji Ide, *At night with the slope*, 2023



Kenji Ide
Perspectives shift, slowly, 2023
wood, stainless steel, watercolor,
pencil, varnish
4 3/4h x 3 1/8w x 4 3/4d in
12.07h x 7.94w x 12.07d cm
KID2023005



Detail: Kenji Ide, *Perspectives shift, slowly*, 2023



Detail: Kenji Ide, *Perspectives shift, slowly*, 2023



Kenji Ide
In such case, dance with the shadows, 2023
wood, found object, watercolor,
lacquer, varnish
8 1/4h x 3 3/8w x 5 1/8d in
20.96h x 8.57w x 13.02d cm
KID2023006



Detail: Kenji Ide, *In such case, dance with the shadows*, 2023



Kenji Ide
Driving along the coastline, 2023
wood, aluminum, found object, acrylic
paint, watercolor, varnish
4 3/8h x 7 7/8w x 11 7/16d in
11.11h x 20w x 29.05d cm
KID2023007



Kenji Ide, *Driving along the coastline*, 2023



Detail: Kenji Ide, *Driving along the coastline*, 2023



Kenji Ide
Coastal observation diary (Day 2), 2023
wood, aluminum, found object, acrylic
paint, watercolor, varnish
2 3/4h x 5 15/16w x 5 3/8d in
6.99h x 15.08w x 13.65d cm
KID2023008



Kenji Ide, *Coastal observation diary (Day 2)*, 2023



Detail: Kenji Ide, *Coastal observation diary (Day 2)*, 2023



Kenji Ide
Three refractions, 2024
wood, watercolor, varnish
2 1/2h x 1 3/4w x 7 1/2d in
6.35h x 4.45w x 19.05d cm
KID2024003



Kenji Ide, *Three reflections*, 2024



Detail: Kenji Ide, *Three refractions*, 2024



Kenji Ide
Illusion becomes a flower at night, 2023
wood, found object, watercolor, acrylic
paint, varnish
9 1/2h x 4w x 4 3/4d in
24.13h x 10.16w x 12.07d cm
KID2023009

Kenji Ide, *Illusion becomes a flower at night*, 2023





Detail: Kenji Ide, *Illusion becomes a flower at night*, 2023



Kenji Ide
*Neutralization of two different
games*, 2023
wood, veneer, watercolor, colored
pencil, varnish
5 3/8h x 5 3/8w x 6 11/16d in
13.65h x 13.65w x 16.99d cm
KID2023010



Kenji Ide, *Neutralization of two different games*, 2023



Detail: Kenji Ide, *Neutralization of two different games*, 2023



Kenji Ide
*While waiting for you, the wild
grows*, 2023
wood, watercolor, lacquer, varnish
4h x 6 5/8w x 9 1/2d in
10.16h x 16.83w x 24.13d cm
KID2023011



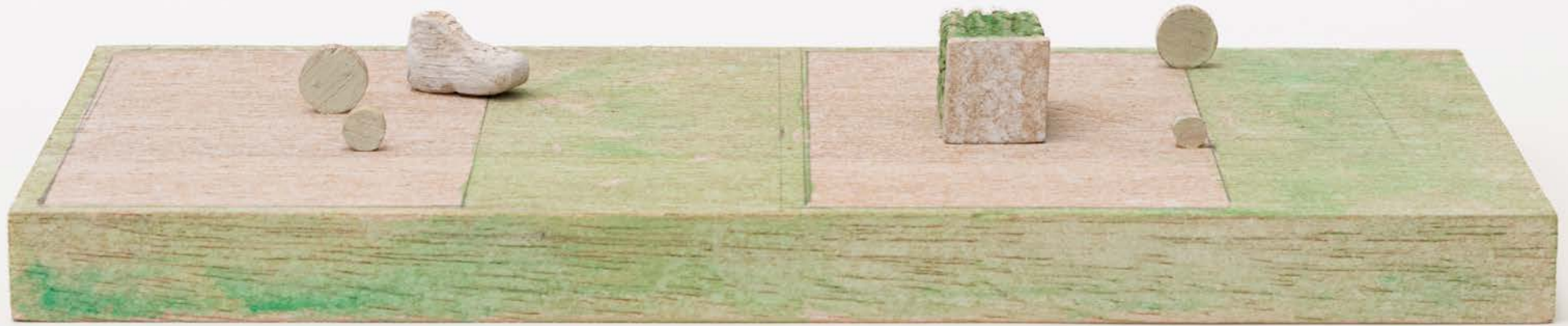
Kenji Ide, *While waiting for you, the wild grows*, 2023



Detail: Kenji Ide, *While waiting for you, the wild grows*, 2023



Kenji Ide
Move from this place, 2023
wood, watercolor, varnish
1 1/8h x 3 3/4w x 8 1/4d in
2.86h x 9.53w x 20.96d cm
KID2023012



Kenji Ide, *Move from this place*, 2023



Detail: Kenji Ide, *Move from this place*, 2023



Kenji Ide
Three times, same tunnel, 2023
wood, acrylic paint, varnish
2h x 1 3/8w x 6 1/2d in
5.08h x 3.49w x 16.51d cm
KID2023013



Kenji Ide, *Three times, same tunnel*, 2023



Detail: Kenji Ide, *Three times, same tunnel*, 2023



Kenji Ide
Vague memories about the hill, 2024
wood, urethane wax
1 3/4h x 1 3/4w x 6 1/4d in
4.45h x 4.45w x 15.88d cm
KID2024004



Kenji Ide, *Vague memories about the hill*, 2024



Detail: Kenji Ide, *Vague memories about the hill*, 2024



Kenji Ide
*A budding revolution replace missing
teeth, 2023*
wood, aluminum, concrete,
watercolor, varnish
2h x 4 3/8w x 12 3/4d in
5.08h x 11.11w x 32.39d cm
KID2023014



Detail: Kenji Ide, *A budding revolution replace missing teeth*, 2023



Kenji Ide
See, we met for a reason, 2024
wood, watercolor, paper, varnish
14 1/2h x 3 3/8w x 11 7/8d in
36.83h x 8.57w x 30.16d cm
KID2024005



Kenji Ide, *See, we met for a reason*, 2024



Detail: Kenji Ide, *See, we met for a reason*, 2024



Kenji Ide
In the same room in resonance, 2024
wood, clay, fabric, thread, watercolor,
varnish
4 3/4h x 5 3/4w x 4 3/4d in
12.07h x 14.61w x 12.07d cm
KID2024006



Kenji Ide, *In the same room in resonance*, 2024



Detail: Kenji Ide, *In the same room in resonance*, 2024



Installation view: Kenji Ide, *American Friend*, 2024



Installation view: Kenji Ide, *American Friend*, 2024

I'm a little late to come
but finally I am here



Installation view: Kenji Ide, *American Friend*, 2024



Installation view: Kenji Ide, *American Friend*, 2024

encountering emptiness

6 hours complete emptiness



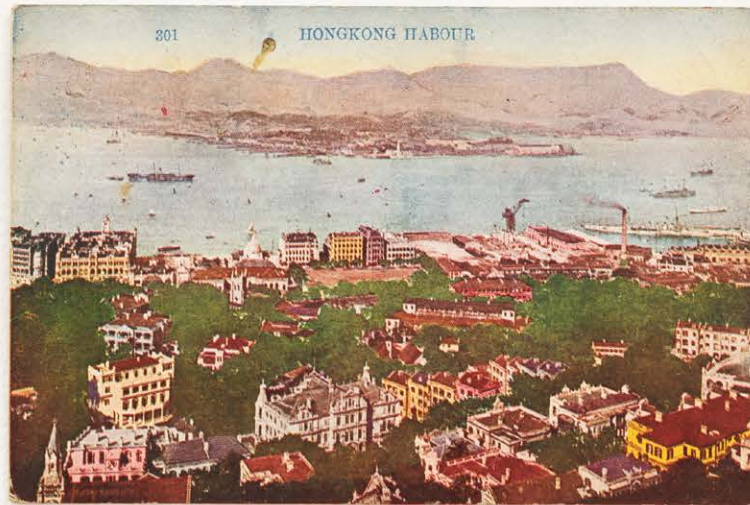
Installation view: Kenji Ide, *American Friend*, 2024



Installation view: Kenji Ide, *American Friend*, 2024



Installation view: Kenji Ide, *American Friend*, 2024



Installation view: Kenji Ide, *American Friend*, 2024



Installation view: Kenji Ide, *American Friend*, 2024



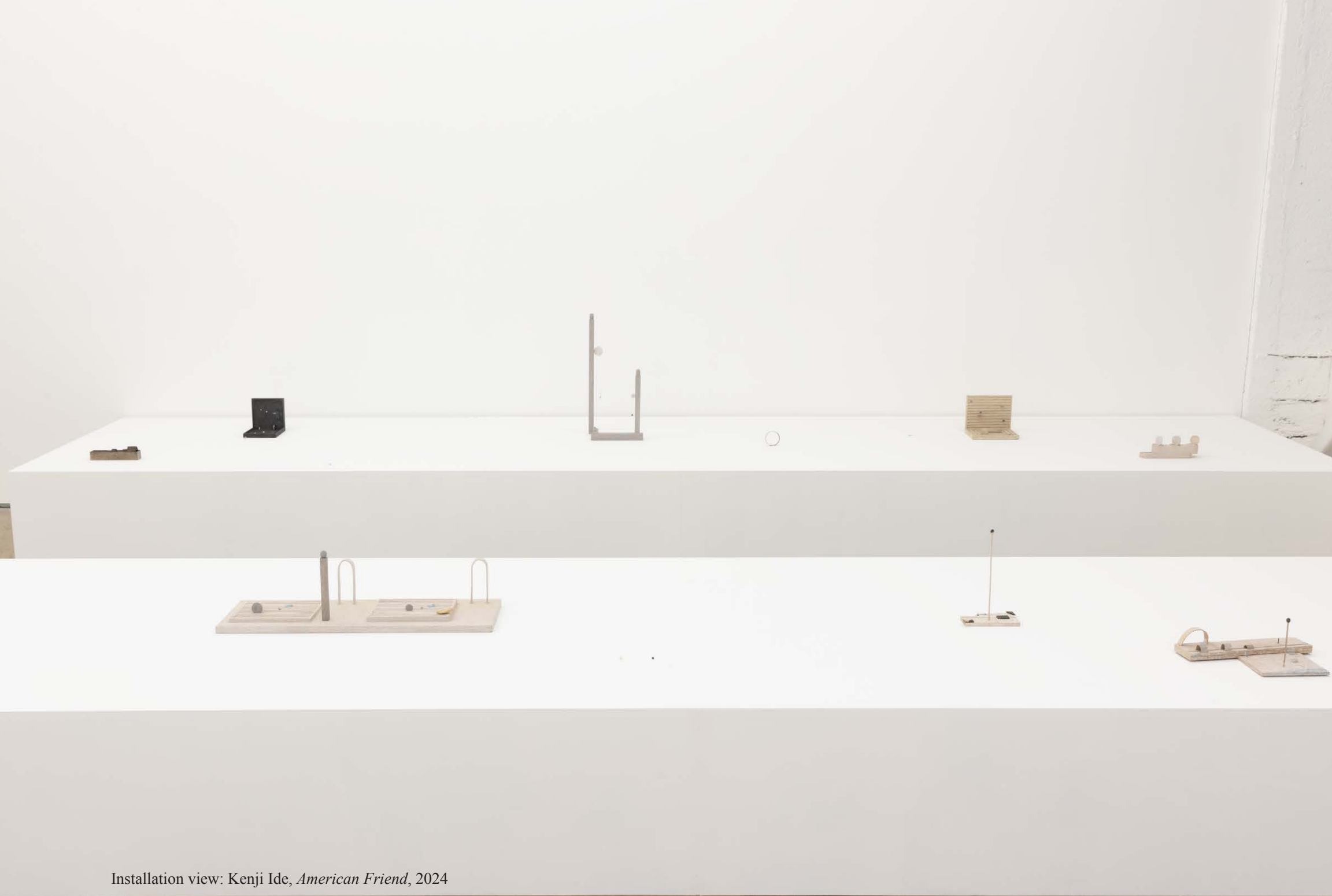
Installation view: Kenji Ide, *American Friend*, 2024



Installation view: Kenji Ide, *American Friend*, 2024



Installation view: Kenji Ide, *American Friend*, 2024



Installation view: Kenji Ide, *American Friend*, 2024



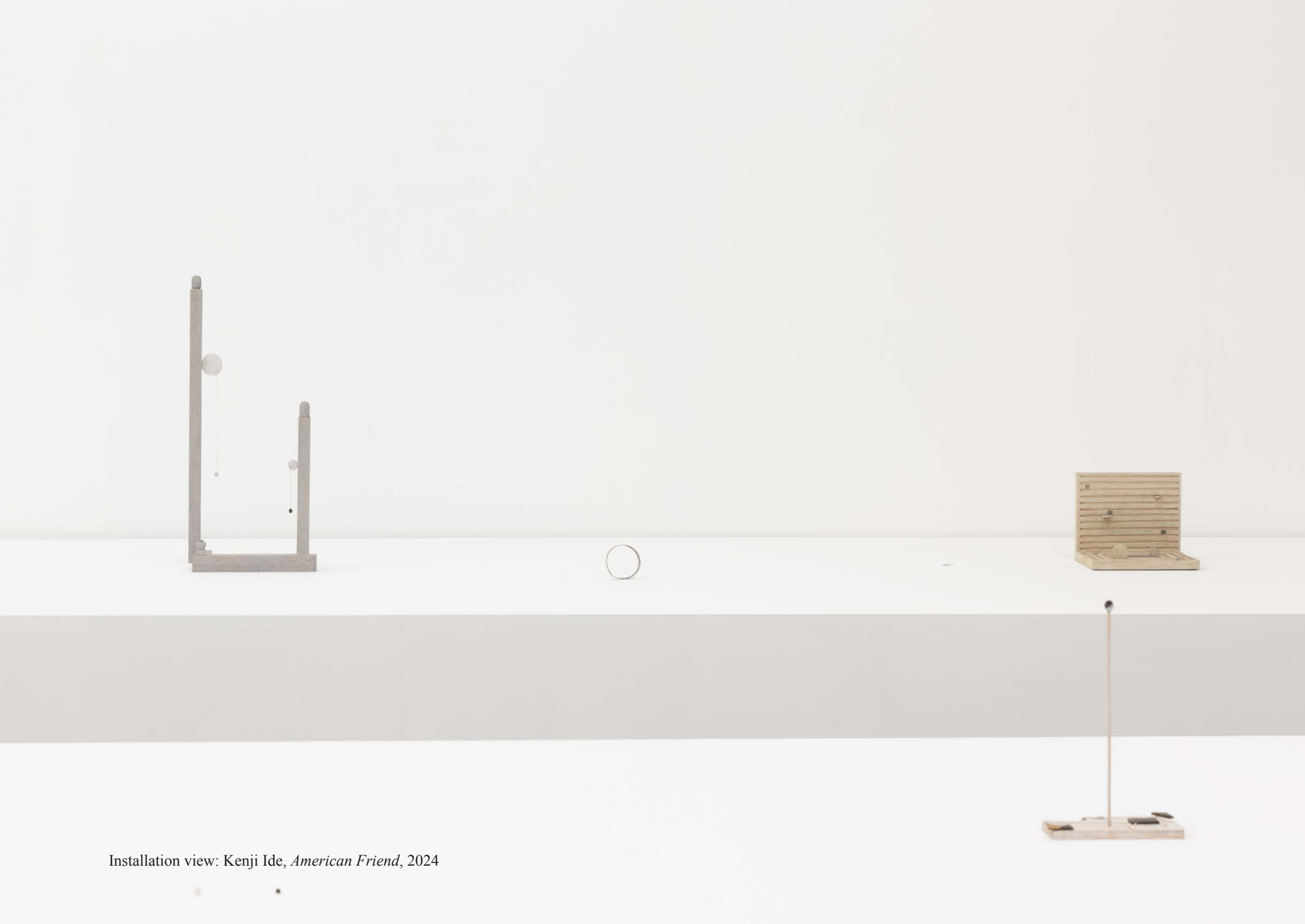
Installation view: Kenji Ide, *American Friend*, 2024



Installation view: Kenji Ide, *American Friend*, 2024



Installation view: Kenji Ide, *American Friend*, 2024



Installation view: Kenji Ide, *American Friend*, 2024



Installation view: Kenji Ide, *American Friend*, 2024



Installation view: Kenji Ide, *American Friend*, 2024



Installation view: Kenji Ide, *American Friend*, 2024



Installation view: Kenji Ide, *American Friend*, 2024



Installation view: Kenji Ide, *American Friend*, 2024



Installation view: Kenji Ide, *American Friend*, 2024



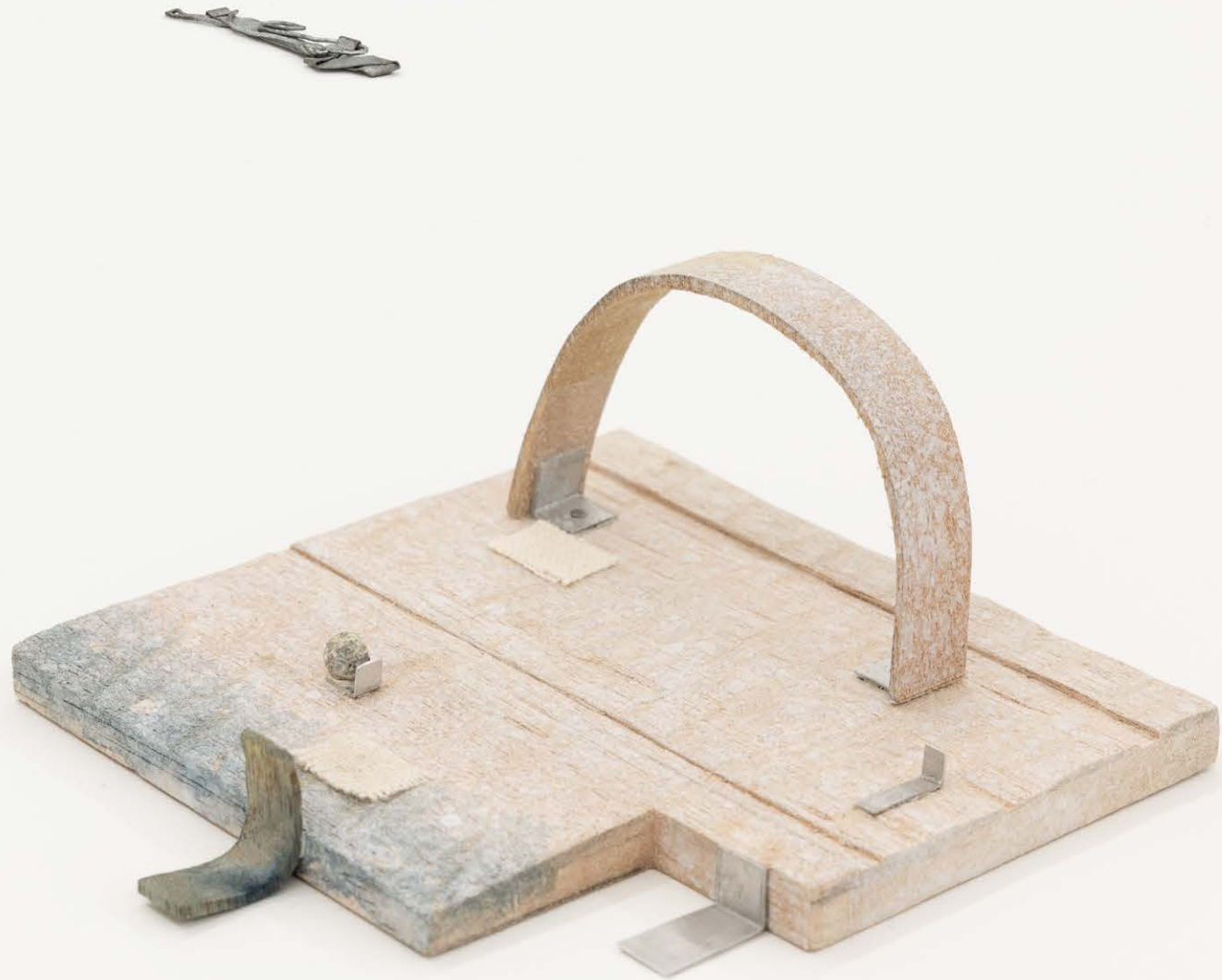
Installation view: Kenji Ide, *American Friend*, 2024



Installation view: Kenji Ide, *American Friend*, 2024



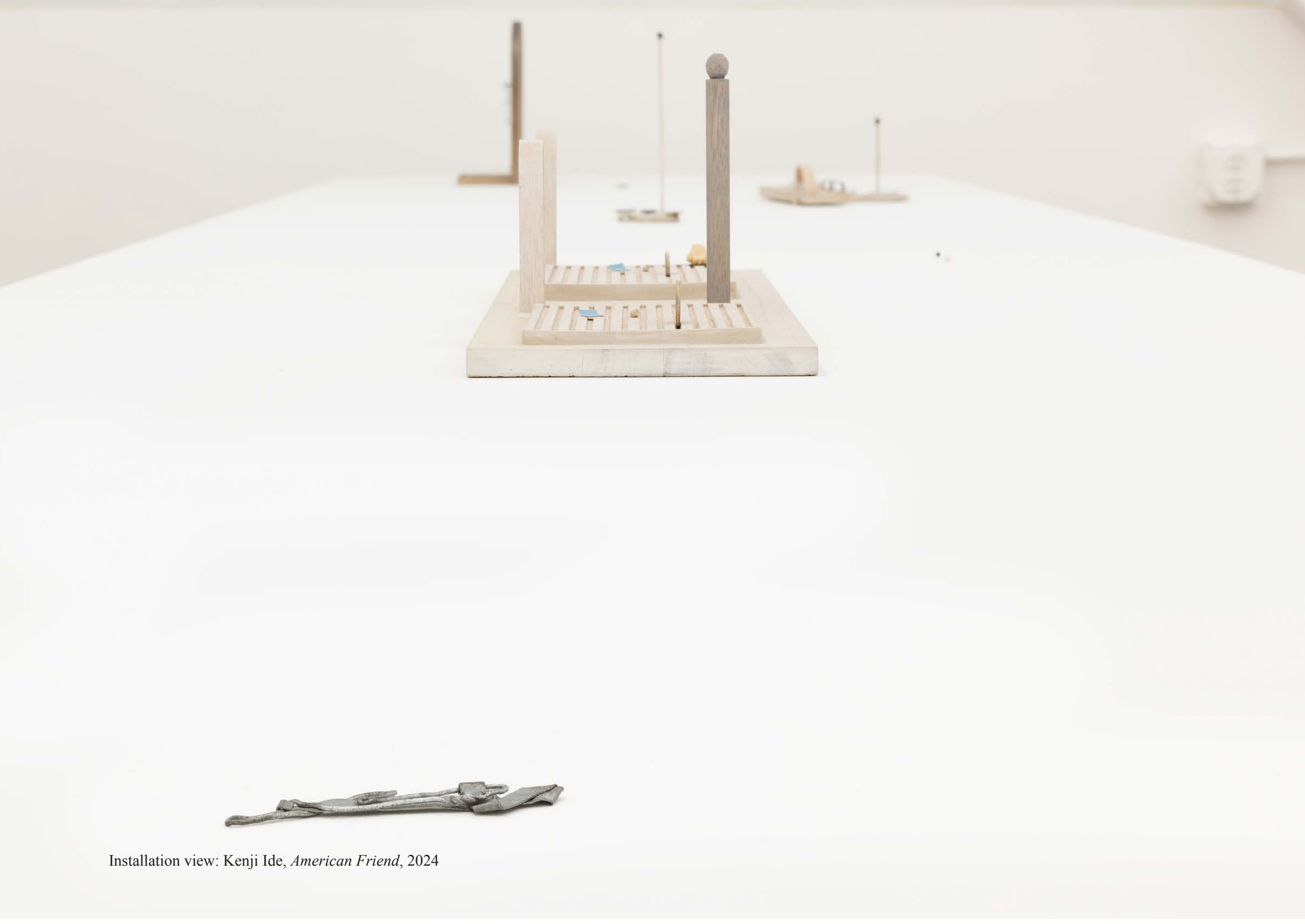
Installation view: Kenji Ide, *American Friend*, 2024



Installation view: Kenji Ide, *American Friend*, 2024



Installation view: Kenji Ide, *American Friend*, 2024



Installation view: Kenji Ide, *American Friend*, 2024



Installation view: Kenji Ide, *American Friend*, 2024



Installation view: Kenji Ide, *American Friend*, 2024



Installation view: Kenji Ide, *American Friend*, 2024



Installation view: Kenji Ide, *American Friend*, 2024



Installation view: Kenji Ide, *American Friend*, 2024

Installation view: Kenji Ide, *American Friend*, 2024





Installation view: Kenji Ide, *American Friend*, 2024



Installation view: Kenji Ide, *American Friend*, 2024



Installation view: Kenji Ide, *American Friend*, 2024



Installation view: Kenji Ide, *American Friend*, 2024



Installation view: Kenji Ide, *American Friend*, 2024



Installation view: Kenji Ide, *American Friend*, 2024



Installation view: Kenji Ide, *American Friend*, 2024



Installation view: Kenji Ide, *American Friend*, 2024