

# Kupfer

'Nectere' List of works

*First floor*



**Ding Ruyi**

*print("Hell World!")*, 2023

Kinetic Installation

Variable material: Printers, paper

100 x 60cm x 360cm



**Ding Ruyi**

*'What do you do for a living as an artist?'*, 2024

Video installation. Materials: printers, LED screen

Variable dimensions



**MARIA**

*YOU ARE (NOT) ALONE*, 2024

video essay 6min33sec by MARIA, colonoscopy of

colon with Ulcerative Colitis footage by Dr. Murra,

footage from 'Ghost in the Shell' (1995)

sculpture: 3D PLA print, spray paint, brass, branches,

wall paint, shimmer finish, rope, hand-dyed row cover

sound: 2min50sec by Samuel Barbier-Ficat

with major thanks to: Eleni Zervou, Eva Sbaraini, Byron Kalomamas, Lishani Ramanayake, Luce Taylor, Oriana GG Hirschberg, Sonji Shah, Sam Van Strien, LaTosha Monique, Susan Jacobs, Charlie Coffey, Joyce Joranko, Aida Joranko, Dan Joranko, Frank Joranko

Supported by Goldsmiths Exhibition Hub

# Kupfer

## Second floor



**Hannah Morgan**

*Pillars*, 2024

Video

5 min



**Hannah Morgan**

*ode to fissures i*, 2024

Hand bent and ground steel, alabaster sections from the same slab used for the 'car park kings' tomb

17 x 47 x 13 cm

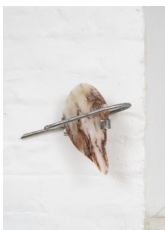


**Hannah Morgan**

*ode to fissures ii*, 2024

Hand bent and ground steel, alabaster sections from the same slab used for the 'car park kings' tomb.

30 x 57 x 13 cm

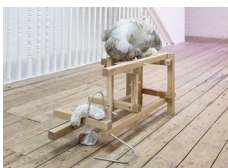


**Hannah Morgan**

*ode to fissures iii*, 2024

Hand bent and ground steel, alabaster sections from the slab used for the 'car park kings' tomb.

22 x 25 x 13 cm



**Hannah Morgan**

*Animula (little soul) viiii*, 2023-4

Oak, Hand carved alabaster from Nottingham seam, steel

110 x 30 x 40 cm

# Kupfer

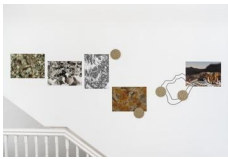


**Hannah Morgan**

*node*, 2024

Hand carved Alabaster from Nottingham seam, Hand bent ground steel

16 x 124 x 16 cm



**Sabīne Šnē**

*Terrain We Traverse*, 2024

Mixed-media installation

'World in a Grain of Sand'. Video with sound (3D animation, 1920x1080px, 3'23, sound generated together with AI)

'Subsurface Kin'. Video with sound (3D animation, 1920x1080px, 7'27", sound generated together with AI)

'Terrains'. Three cut vinyl drawings, 64 x 44 cm, 40 x 25 cm, 38 x 35 cm

'Handful of Soil'. Six sculptures, 3D-printed in PLA recycled plastic, 12 x 12 x 2 cm

'Ground beetle'. Three sculptures, 3D-printed in PLA recycled plastic, 6 x 4.4 x 3 cm

'Path'. 3D-printed in PLA recycled plastic, 24 x 17 x 3.5 cm

'Textures'. Six prints of digital drawings, paper, 42 x 29.7 cm