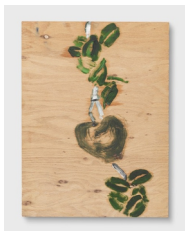
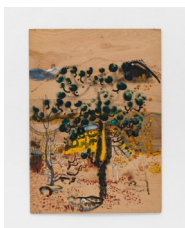


The approach



Bill Lynch 1960-2013
No title [Branch, Leaves in Center of Painting], n.d Circa 1990-2005
Oil on salvaged wood
20 x 15 x 1/2 in.
50.8 x 38.1 x 1.3 cm
(AP-LYNCB-00037)



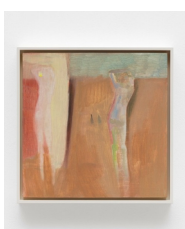
Bill Lynch 1960-2013
Self-Portrait as a Pine Tree 2, n.d. Circa 1990 2005
Oil on wood
106.7 x 76.2 x 0.4 cm
42 x 30 x 3/16 in.
(AP-LYNCB-00238)



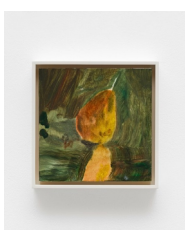
James Owens
What are you hiding from, it's been too long, 2024
Oil on canvas
190 x 160 cm
74 13/16 x 63 in.
(AP-OWENJ-00001)



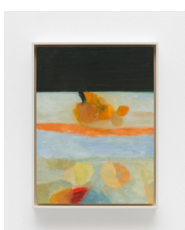
James Owens
Our Bones Lay Amongst the Trees, 2024
Oil on canvas
220 x 190 cm
86 5/8 x 74 13/16 in.
(AP-OWENJ-00002)



Ellen Siebers
House of Light, 2023
Oil on birch panel
30.5 x 30.5 cm
12 x 12 in.
(AP-SIEBE-00001)



Ellen Siebers
Bosc pear, 2023
Oil on birch panel
20.3 x 20.3 cm
8 x 8 in.
(AP-SIEBE-00002)



Ellen Siebers
Oranges, 2023
Oil on birch panel
40.6 x 30.5 cm
16 x 12 in.
(AP-SIEBE-00003)

The approach



Ellen Siebers
A walk at dusk, 2023
Oil on birch panel
25.4 x 20.3 cm
10 x 8 in.
(AP-SIEBE-00005)



Ellen Siebers
Redon's poppy, 2023
Oil on birch panel
20.3 x 20.3 cm
8 x 8 in.
(AP-SIEBE-00006)



Ellen Siebers
Late November, 2023
Oil on birch panel
61 x 45.7 cm
24 x 18 in.
(AP-SIEBE-00007)



Amy Winstanley
Stay Potential, Messy Joy, 2023/4
Oil on canvas
150 x 120 cm
59 1/16 x 47 1/4 in.
(AP-WINSA-00002)



Amy Winstanley
Plans Slip, Quick River Dip, 2023/4
Oil on canvas
54 x 64 cm
21 1/4 x 25 3/16 in.
(AP-WINSA-00003)