

**Marco Fusinato**  
Nothing Is Universal,  
Not Even Air

24 February – 13 April  
2024  
PALAS, Sydney

**PALAS<sup>®</sup>**



**Marco Fusinato**  
**Nothing Is Universal, Not Even Air**

24 February – 13 April 2024  
PALAS, Sydney

Nothing Is Universal, Not Even Air is the first exhibition of silkscreen paintings of selected images from DESASTRES.

DESASTRES is an on-going performance of Experimental/Noise/Metal guitar through mass amplification that synchronizes image. First performed in the Australia Pavilion at the 59th Venice Biennale, 2022 for 200 consecutive days – each day of the Biennale's duration. The large-scale, performance as installation featured Marco Fusinato improvising slabs of noise, saturated feedback, and discordant intensities with an electric guitar, that triggered a deluge of disparate and disconnected images onto a freestanding floor-to-ceiling LED wall. The mass index of colliding images is a mess.

This collision of image is the catalyst for the series of silkscreen paintings. These works exist in parallel to the performances.

The images selected for the silkscreen paintings were chosen by instinct, from an extensive archive that is sourced via an open search across multiple online platforms, or Fusinato's own photographs taken with his phone-camera.

The title for the exhibition is a quote by the artist given in an interview in 2022\*. By extension, the titles for each painting in the exhibition are the jpg tags of the original image files with the word 'variation' added. All the works are white on black, this reversing of positive/negative references earlier works by the artist. The silkscreen process is alchemical, physical, open to mistakes, irregularities, and variations. This experimental approach is analogous to the DESASTRES performance where sound is improvised, and the images randomised, generating an unknown outcome. Within the exhibition, monochromatic black on black paintings make a connection back to the performance whereby a cut to silence cuts the screen to black.

This new series translates jpgs from the immediate and ephemeral context of the performance, through the labour of silkscreen printing, into the lineage of painting and broader history of materials and processes of mark making. The outcome transitions from a fleeting image to an object of prolonged meditation.

\*"Avoid nationalistic militarism and men in groups especially in uniforms. Nothing is universal not even air. If nobody moves, nobody gets hurt. Having said that, they said, we will overthrow the pride of your cars, we will destroy the happiness of your Sundays, because you have been condemned. Everything is misunderstood. Work and other forced relationships."

ArtReview UK, Venice Questionnaire 15 April 2022



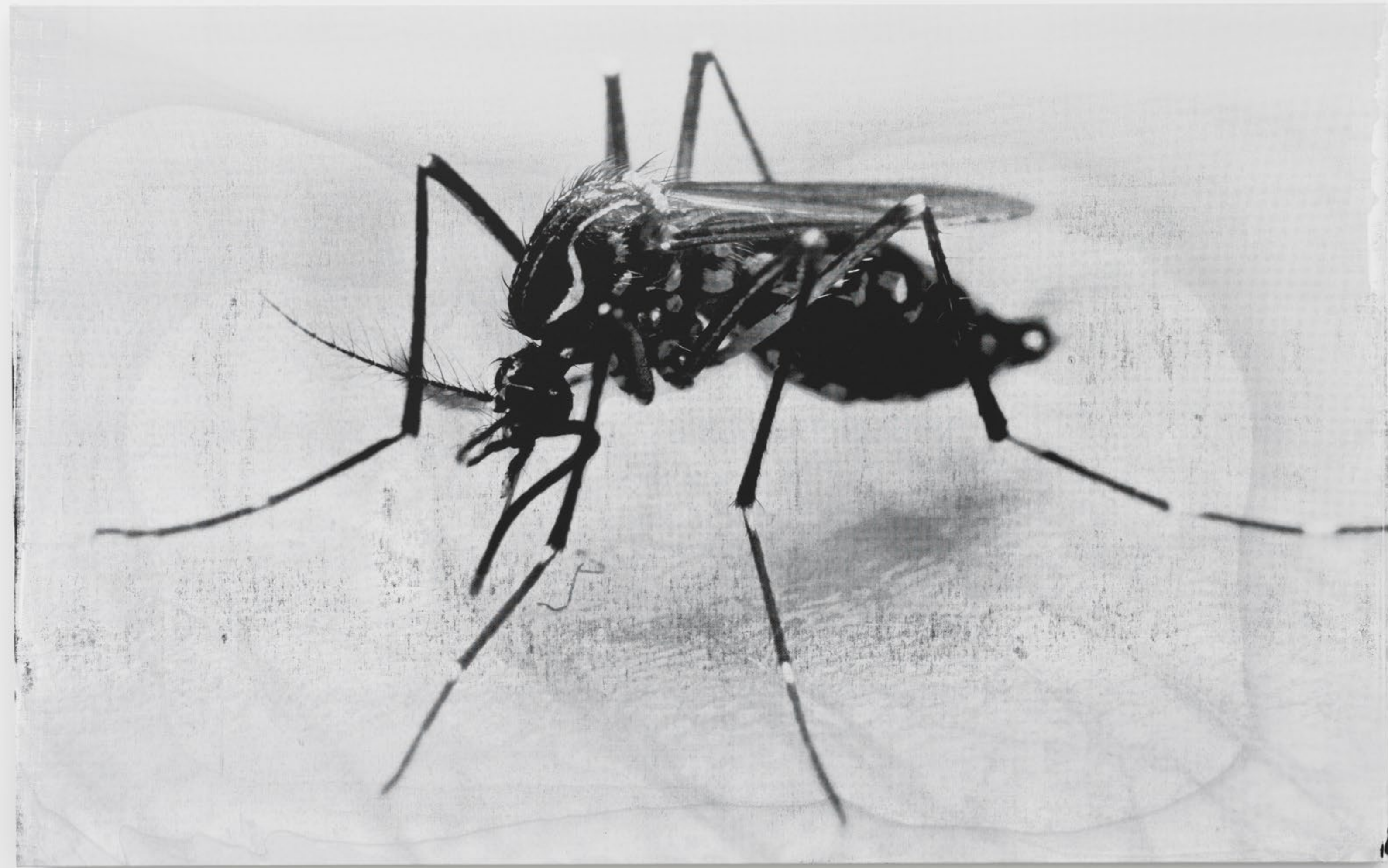
42



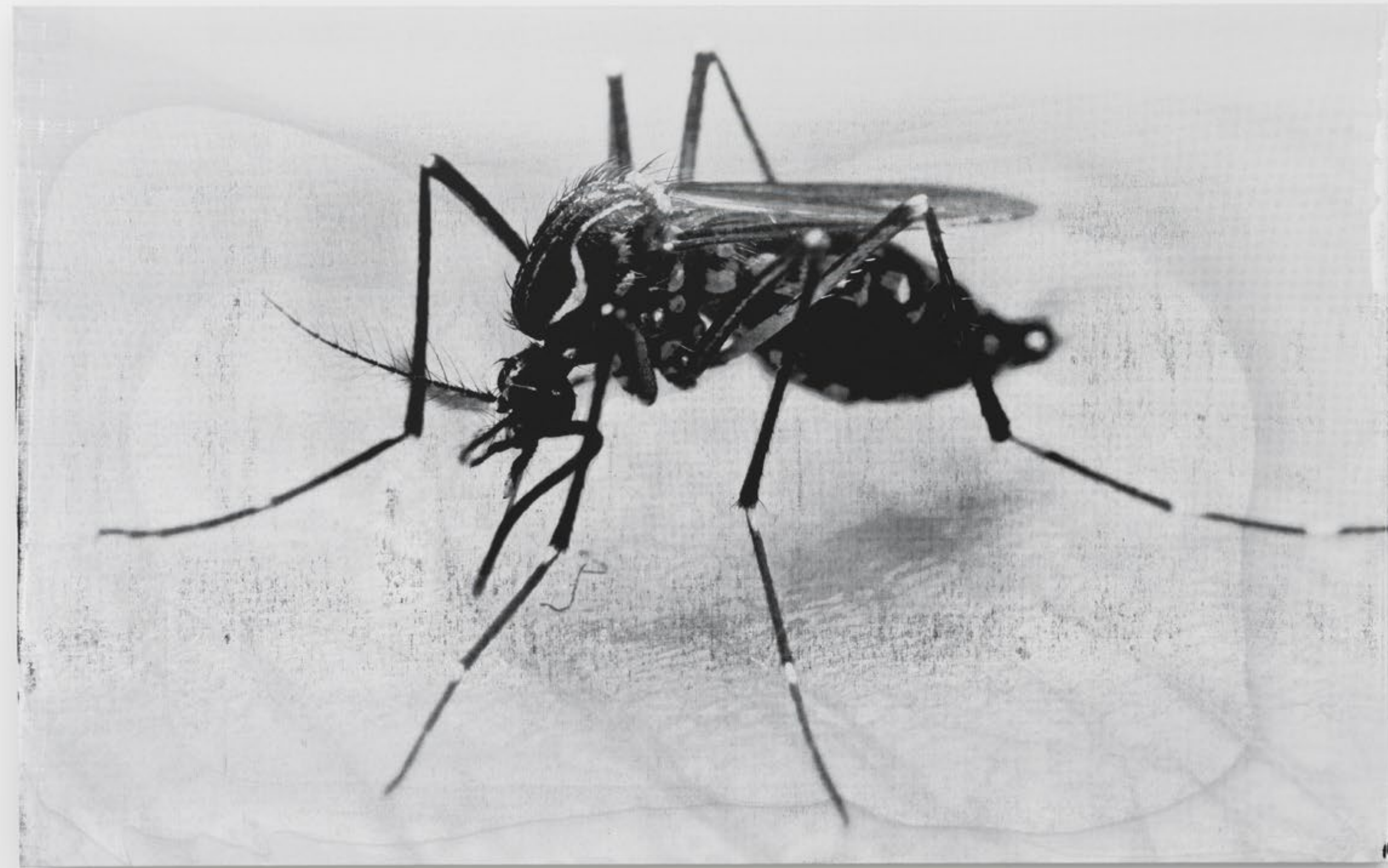




DESASTRES 288631D3-2D44-4EBF-AF-  
461AA1FF176766\_source copy.jpg variation, 2024  
Liquitex titanium white heavy body acrylic with  
gloss and screen-print medium on Belle Art 96U  
Fine 360gsm black double primed linen  
150 x 240 cm  
Unique state + Unique AP  
(PAL-MF20010)



DESASTRES 288631D3-2D44-4EBF-AF-  
461AA1FF176766\_source copy.jpg variation, 2024  
Liquitex titanium white heavy body acrylic with  
gloss and screen-print medium on Belle Art 96U  
Fine 360gsm black double primed linen  
150 x 240 cm  
Unique state + Unique AP  
(PAL-MF20010)

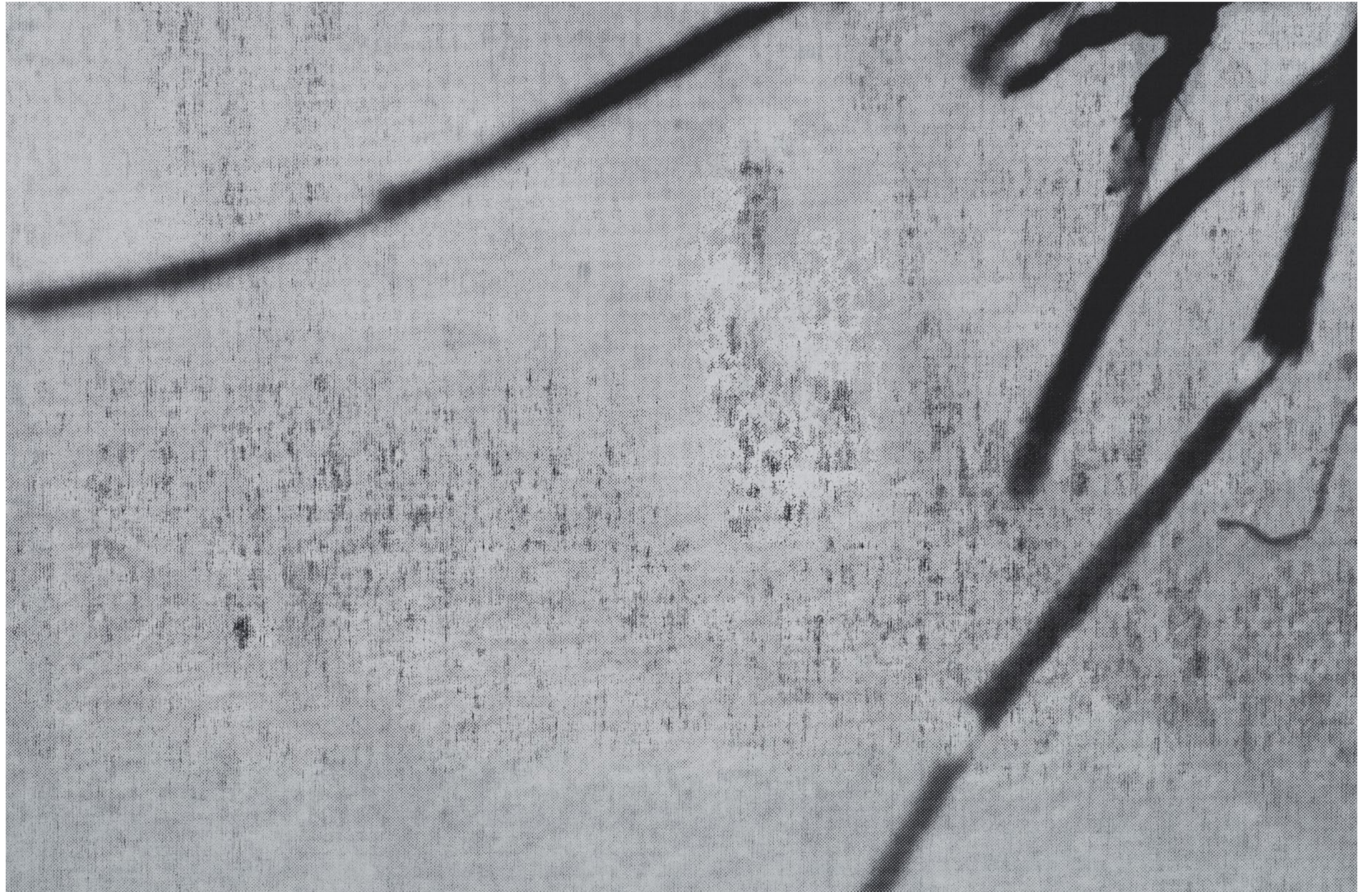


DESASTRES 288631D3-2D44-4EBF-AF-  
461AA1FF176766\_source copy.jpg variation, 2024  
(detail)  
Liquitex titanium white heavy body acrylic with  
gloss and screen-print medium on Belle Art 96U  
Fine 360gsm black double primed linen  
150 x 240 cm  
Unique state + Unique AP  
(PAL-MF20010)





DESASTRES 288631D3-2D44-4EBF-AF-  
461AA1FF176766\_source copy.jpg variation, 2024  
(detail)  
Liquitex titanium white heavy body acrylic with  
gloss and screen-print medium on Belle Art 96U  
Fine 360gsm black double primed linen  
150 x 240 cm  
Unique state + Unique AP  
(PAL-MF20010)





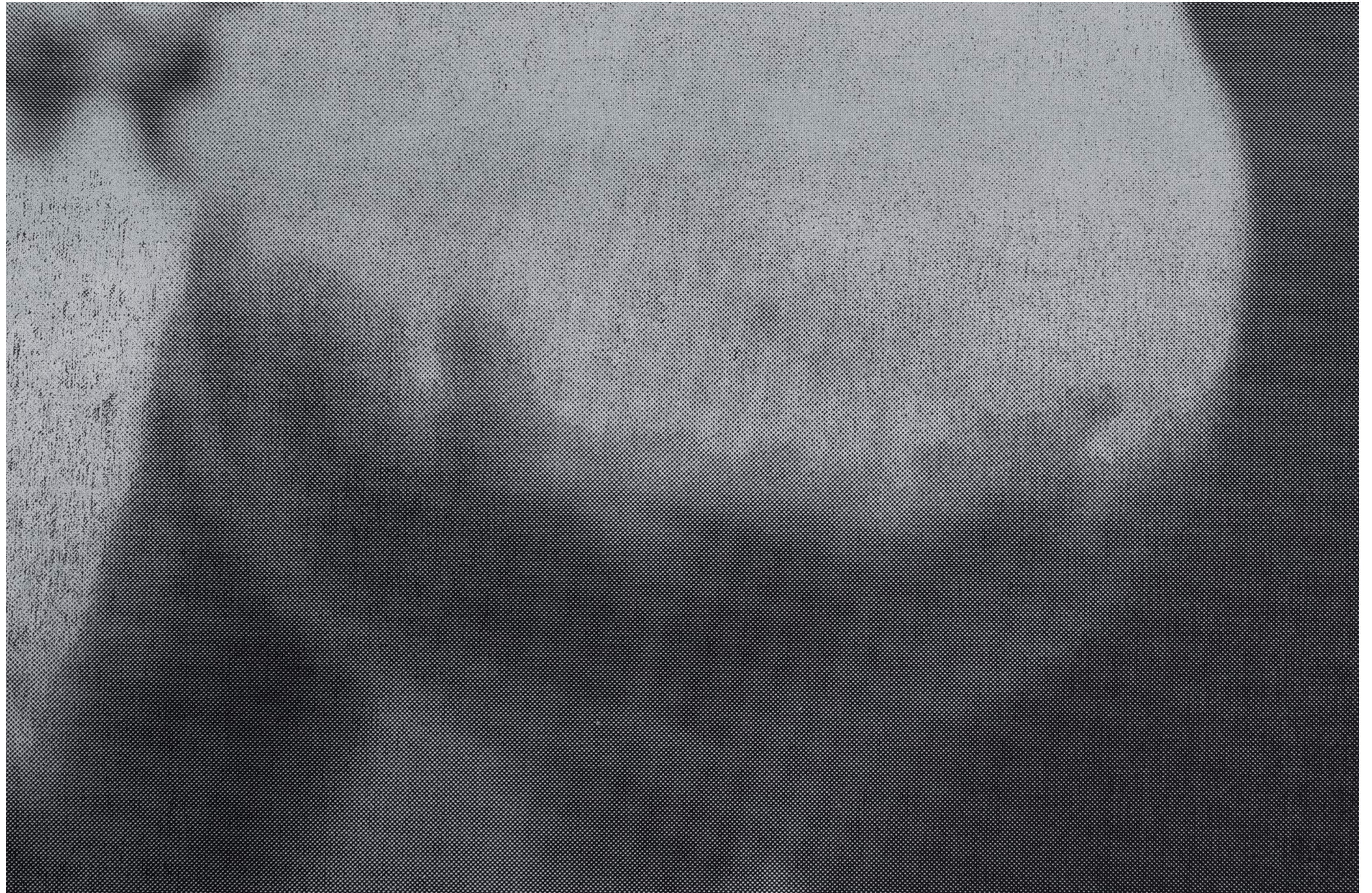
DESASTRES NQ6U7KH2U5OL5OCOXRKTVI2IWQ-1.  
jpg variation, 2024  
Liquitex titanium white heavy body acrylic with  
gloss and screen-print medium on Belle Art 96U  
Fine 360gsm black double primed linen  
150 x 240 cm  
Unique state + Unique AP  
(PAL-MF20009)



DESASTRES NQ6U7KH2U5OL5OCOXKRTVI2IWQ-1.  
jpg variation, 2024  
Liquitex titanium white heavy body acrylic with  
gloss and screen-print medium on Belle Art 96U  
Fine 360gsm black double primed linen  
150 x 240 cm  
Unique state + Unique AP  
(PAL-MF20009)



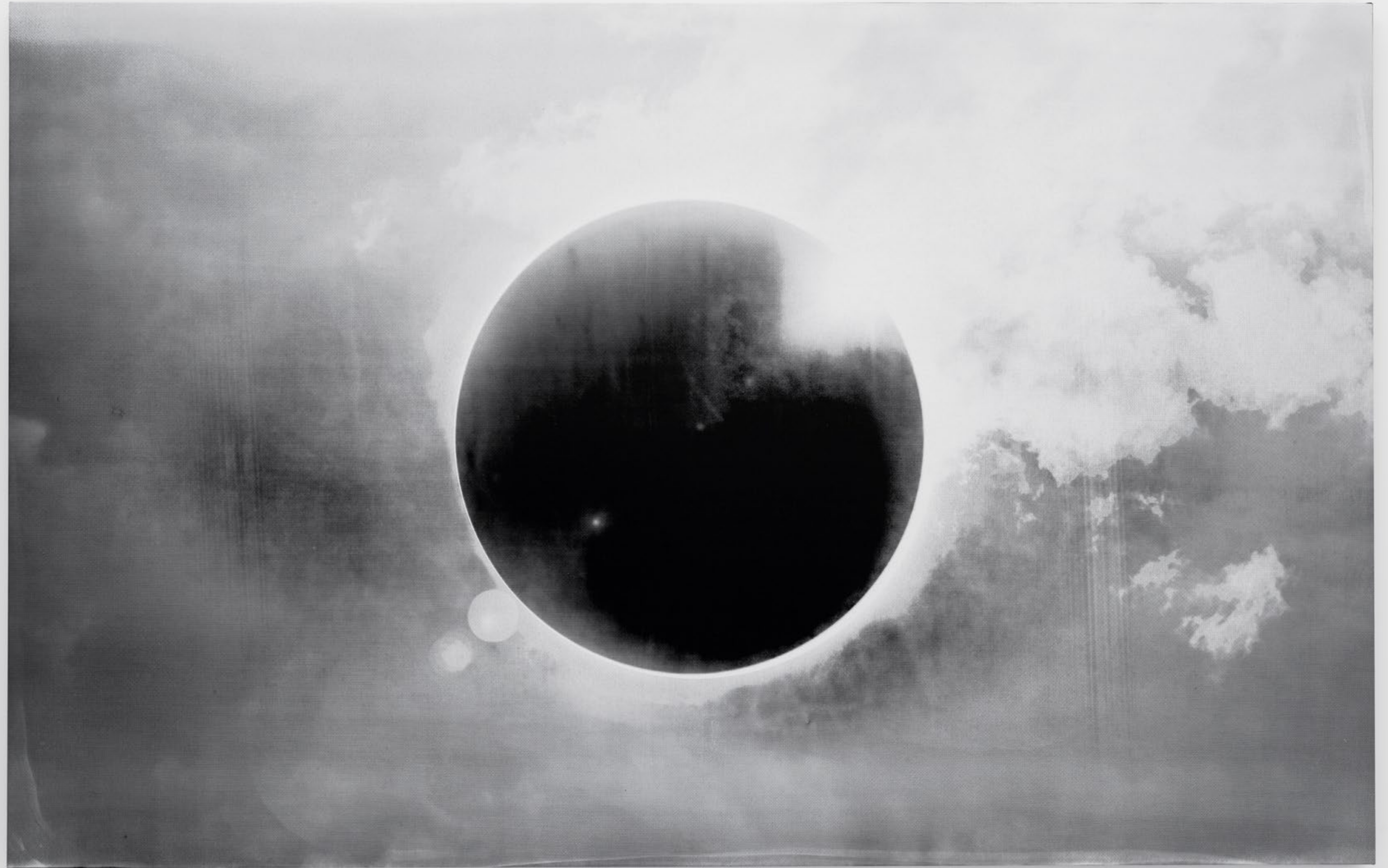
DESASTRES NQ6U7KH2U5OL5OCOXRKTVI2IWQ-1.  
jpg variation, 2024  
(detail)  
Liquitex titanium white heavy body acrylic with  
gloss and screen-print medium on Belle Art 96U  
Fine 360gsm black double primed linen  
150 x 240 cm  
Unique state + Unique AP  
(PAL-MF20009)







DESASTRES dlce34aza7o1pjlcet7q.jpg variation,  
2024  
Liquitex titanium white heavy body acrylic with  
gloss and screen-print medium on Belle ArJ 96U  
Fine 360gsm black double primed linen  
150 x 240 cm  
Unique state + Unique AP  
(PAL-MF20017)

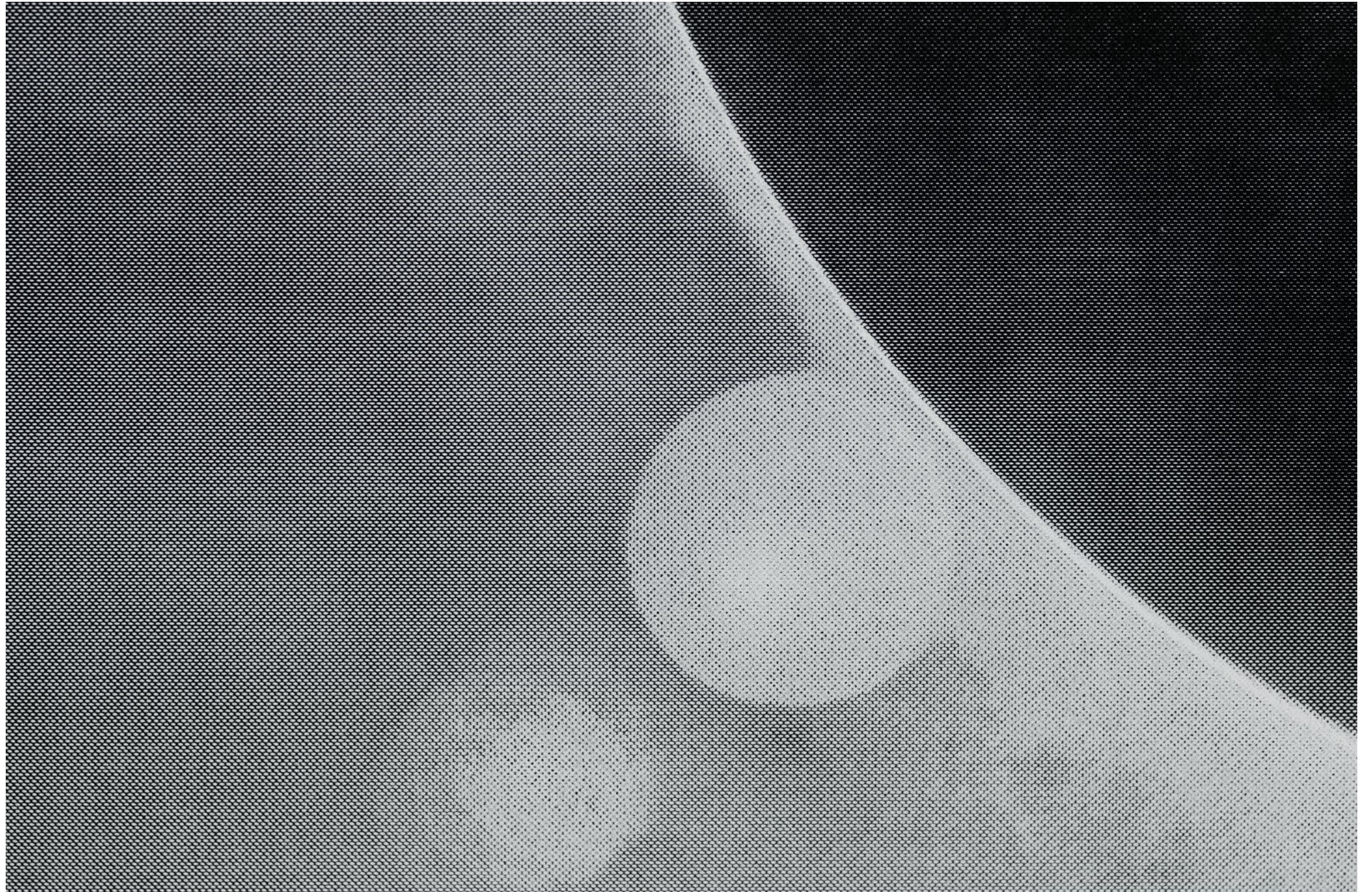


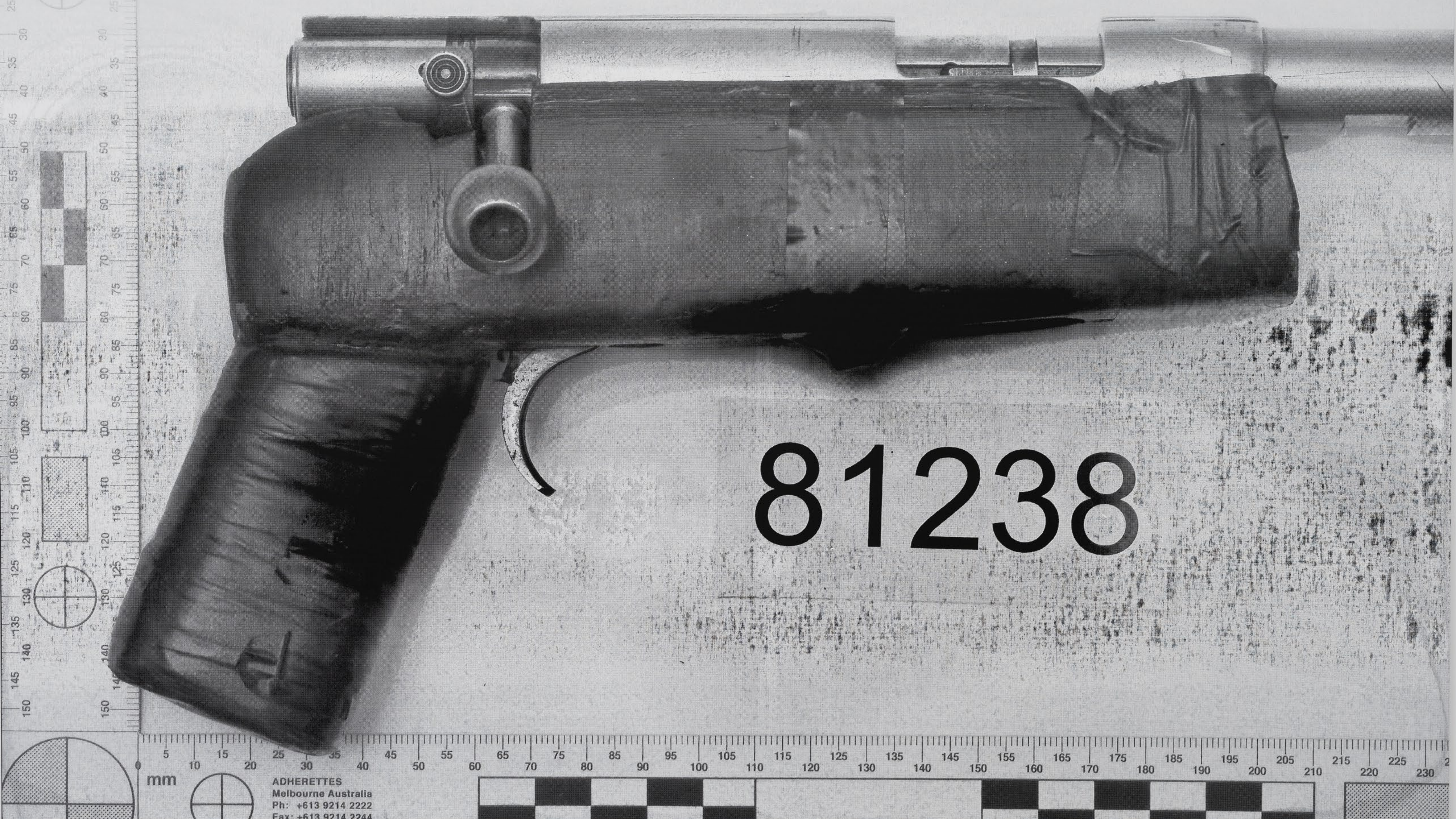


DESASTRES dlce34aza7o1pjlcet7q.jpg variation,  
2024  
Liquitex titanium white heavy body acrylic with  
gloss and screen-print medium on Belle ArJ 96U  
Fine 360gsm black double primed linen  
150 x 240 cm  
Unique state + Unique AP  
(PAL-MF20017)

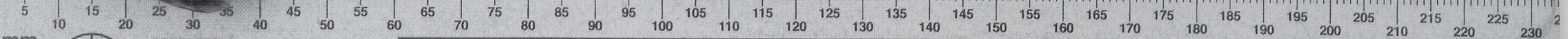
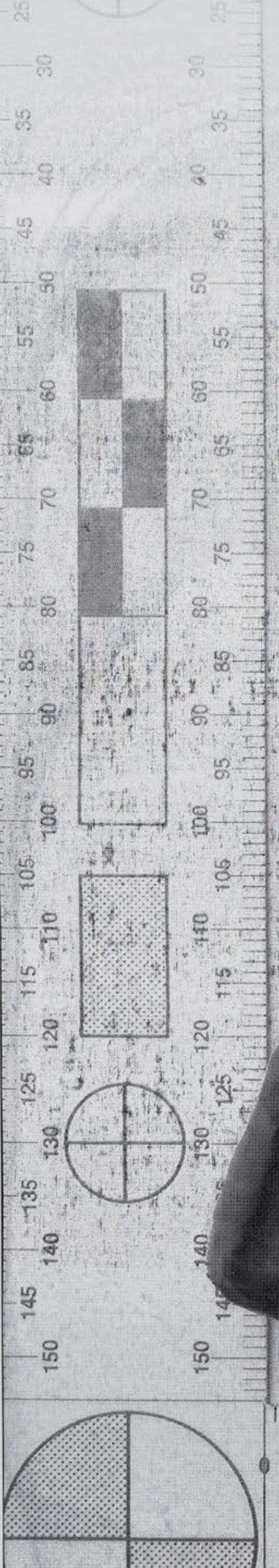


DESASTRES dlce34aza7o1pjlcet7q.jpg variation,  
2024  
(detail)  
Liquitex titanium white heavy body acrylic with  
gloss and screen-print medium on Belle ArJ 96U  
Fine 360gsm black double primed linen  
150 x 240 cm  
Unique state + Unique AP  
(PAL-MF20017)





81238

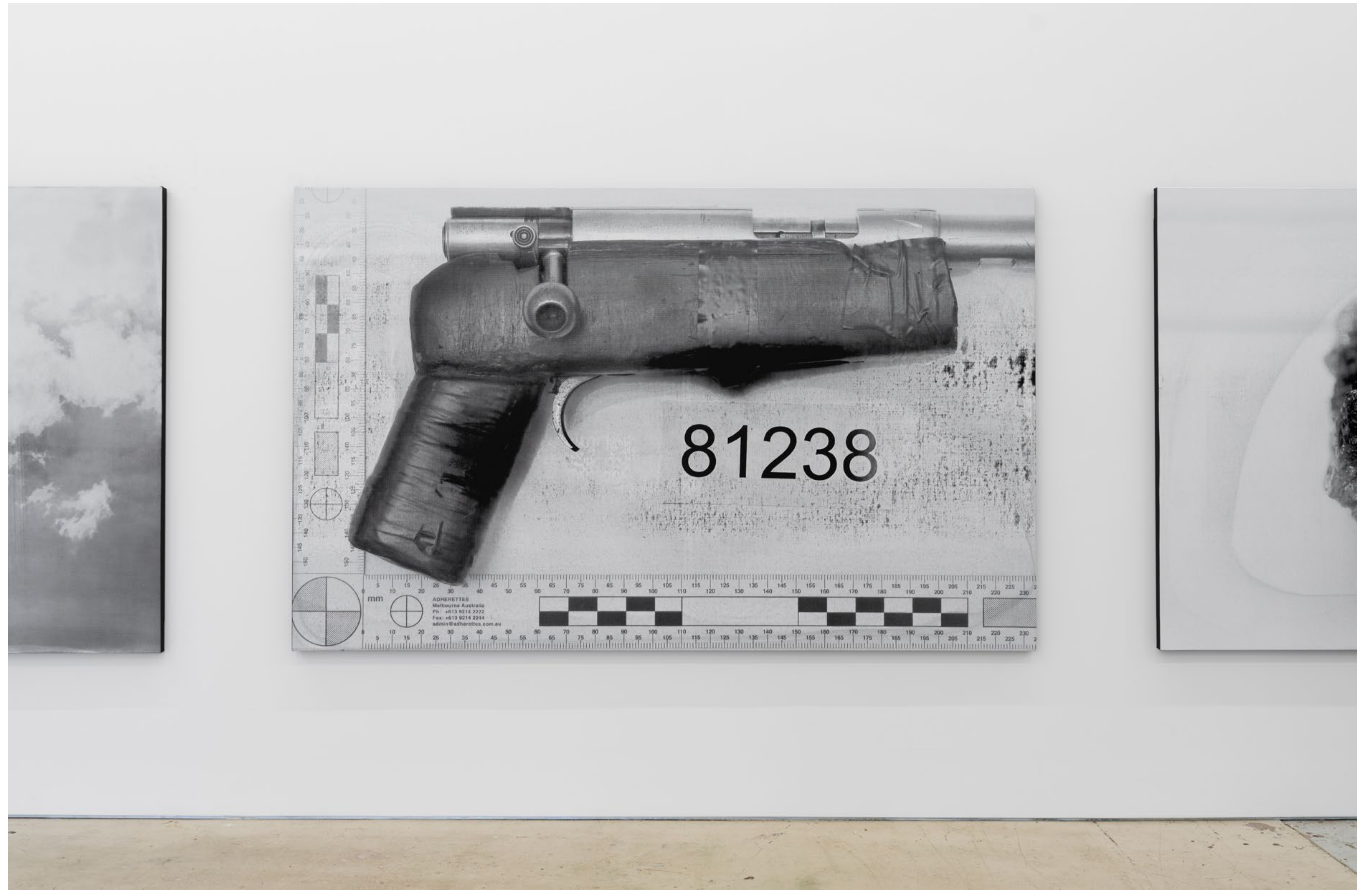


ADHERETTES  
Melbourne Australia  
Ph: +613 9214 2222  
Fax: +613 9214 2244

DESASTRES 81238A.jpg variation, 2024  
Liquitex titanium white heavy body acrylic with  
gloss and screen-print medium on Belle Arti  
96U Fine 360gsm black double primed linen  
150 x 240 cm  
Unique state + Unique AP  
(PAL-MF20013)



DESASTRES 81238A.jpg variation, 2024  
Liquitex titanium white heavy body acrylic with  
gloss and screen-print medium on Belle Arti  
96U Fine 360gsm black double primed linen  
150 x 240 cm  
Unique state + Unique AP  
(PAL-MF20013)



DESASTRES 81238A.jpg variation, 2024

(detail)

Liquitex titanium white heavy body acrylic with

gloss and screen-print medium on Belle Arti

96U Fine 360gsm black double primed linen

150 x 240 cm

Unique state + Unique AP

(PAL-MF20013)



DESASTRES 81238A.jpg variation, 2024

(detail)

Liquitex titanium white heavy body acrylic with

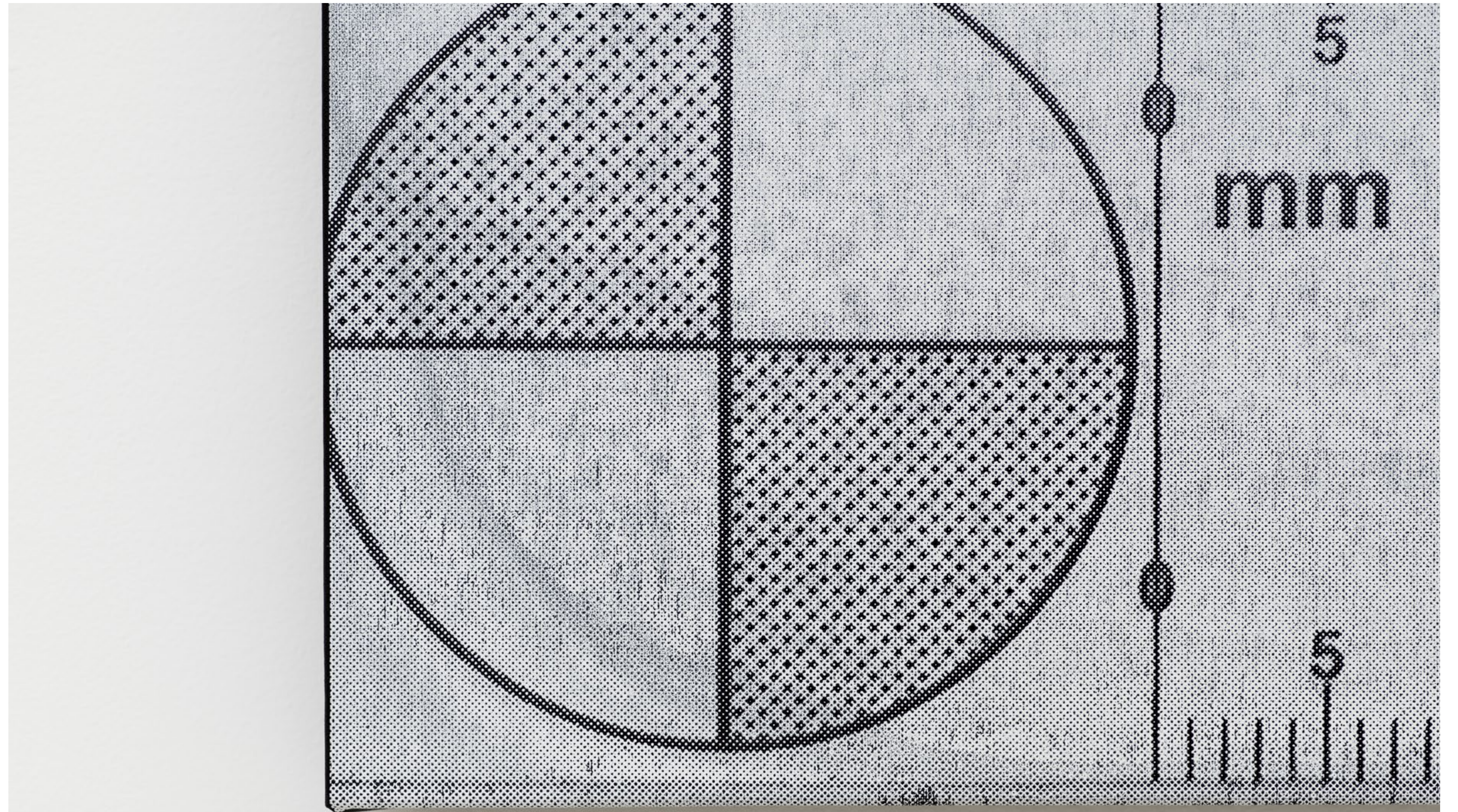
gloss and screen-print medium on Belle Arti

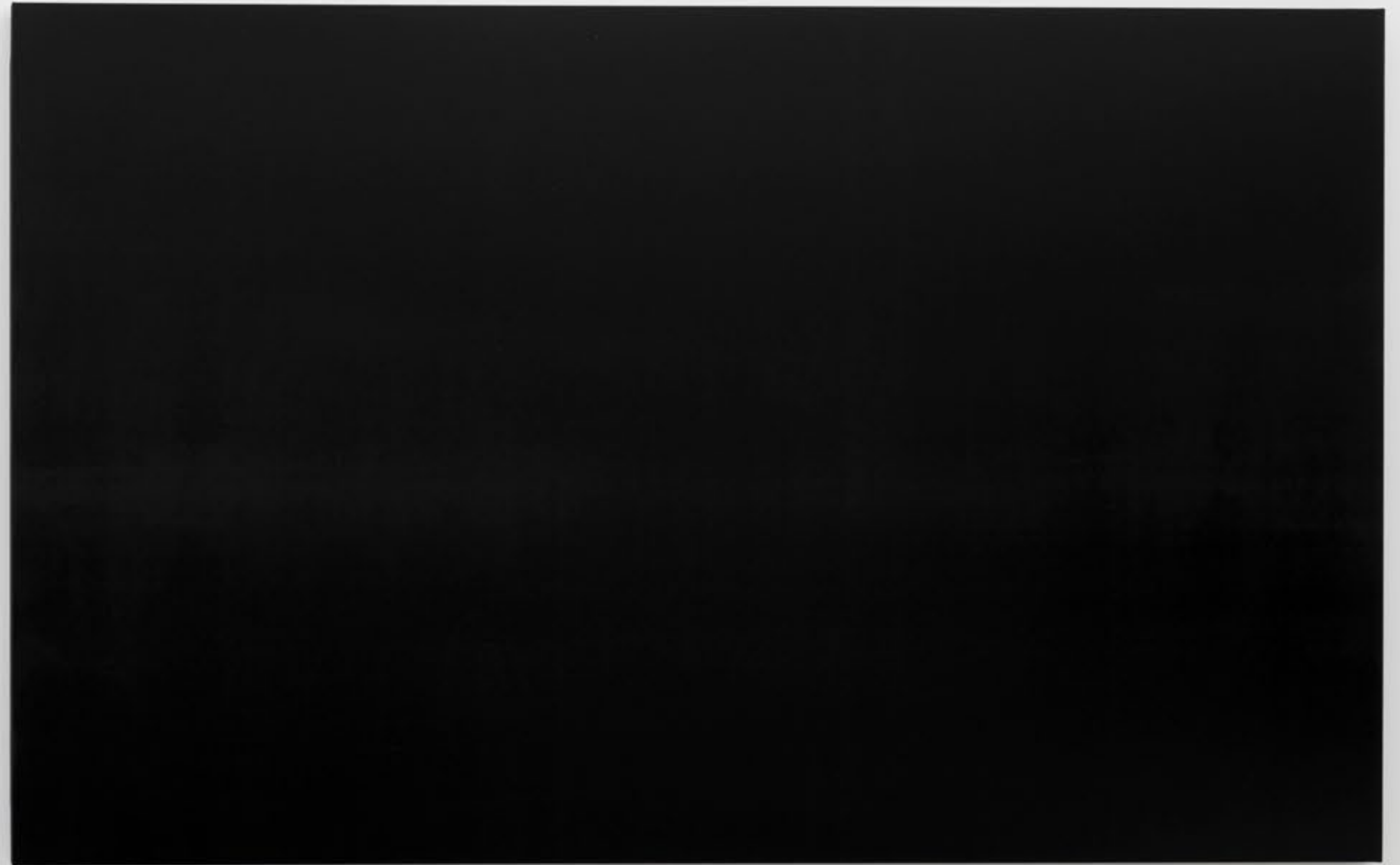
96U Fine 360gsm black double primed linen

150 x 240 cm

Unique state + Unique AP

(PAL-MF20013)









DESASTRES il\_fullxfull.3655095447\_cb5h\_rough-diamond-uncut.jpg variation, 2024  
Liquitex titanium white heavy body acrylic with gloss and screen-print medium on Belle Arti 96U Fine 360gsm black double primed linen 150 x 240 cm  
Unique state + Unique AP  
(PAL-MF20012)

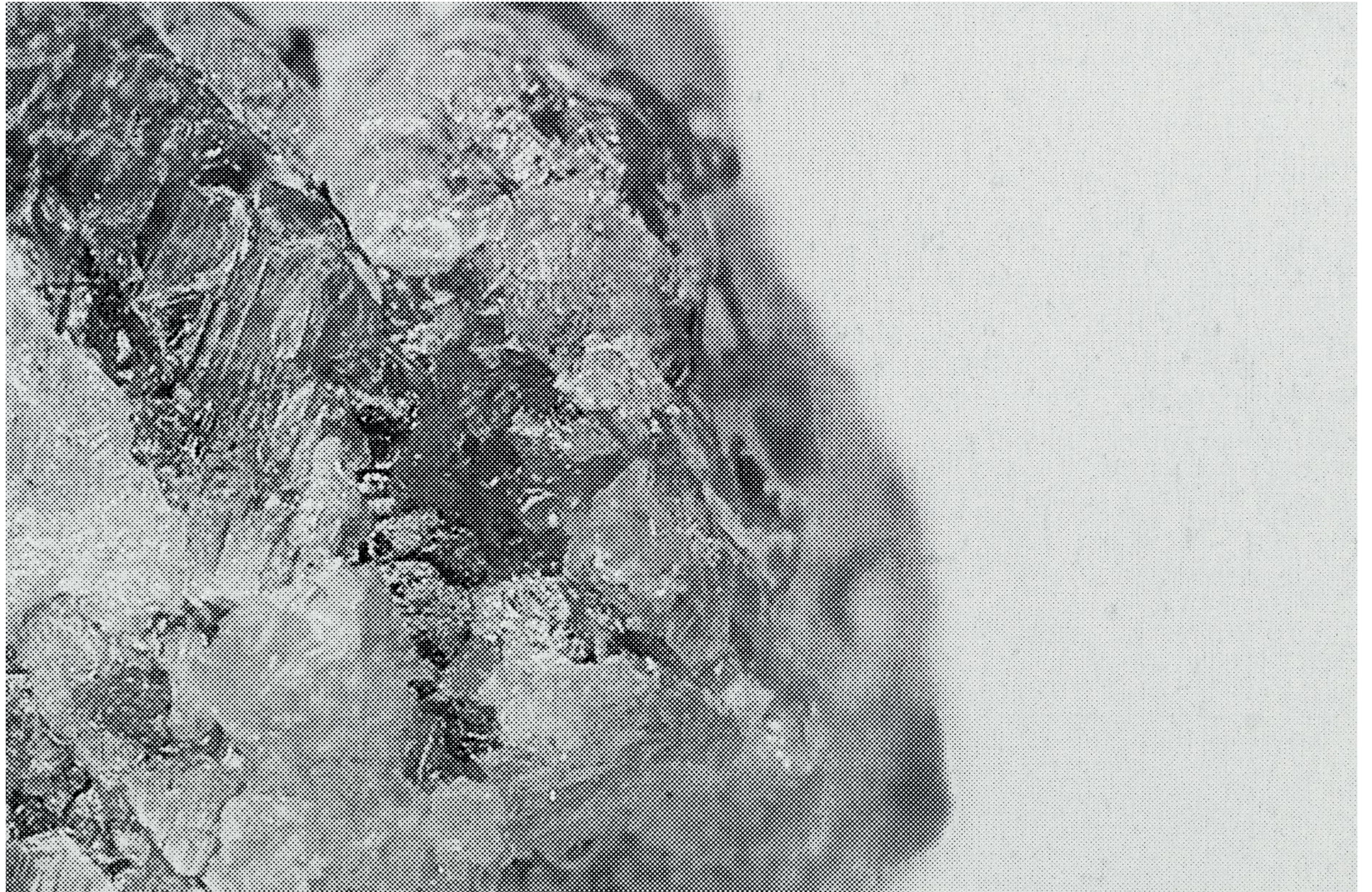


DESASTRES il\_fullxfull.3655095447\_cb5h\_rough-diamond-uncut.jpg variation, 2024  
Liquitex titanium white heavy body acrylic with gloss and screen-print medium on Belle Arti 96U Fine 360gsm black double primed linen 150 x 240 cm  
Unique state + Unique AP  
(PAL-MF20012)



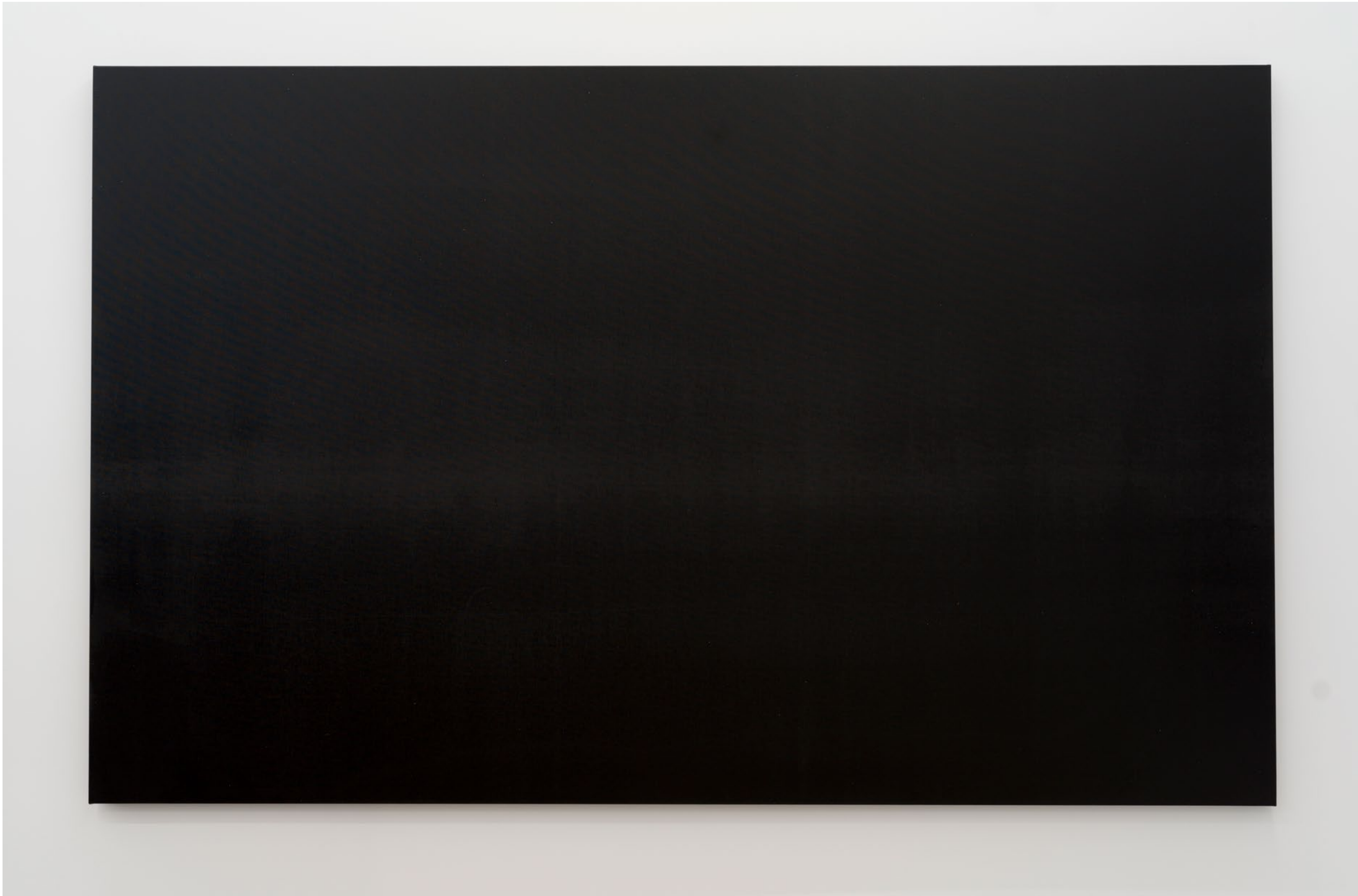
DESASTRES il\_fullxfull.3655095447\_cb5h\_rough-diamond-uncut.jpg variation, 2024 (detail)

Liquitex titanium white heavy body acrylic with gloss and screen-print medium on Belle Arti 96U Fine 360gsm black double primed linen 150 x 240 cm  
Unique state + Unique AP  
(PAL-MF20012)





DESASTRES 28%DOT20dpi600px.jpg variation 1,  
2024  
Liquitex titanium white heavy body acrylic with  
gloss and screen-print medium on Belle Arti  
96U Fine 360gsm black double primed linen  
150 x 240 cm  
Unique state + Unique AP  
(PAL-MF20011)



DESASTRES 28%DOT20dpi600px.jpg variation 1,  
2024  
Liquitex titanium white heavy body acrylic with  
gloss and screen-print medium on Belle Arti  
96U Fine 360gsm black double primed linen  
150 x 240 cm  
Unique state + Unique AP  
(PAL-MF20011)







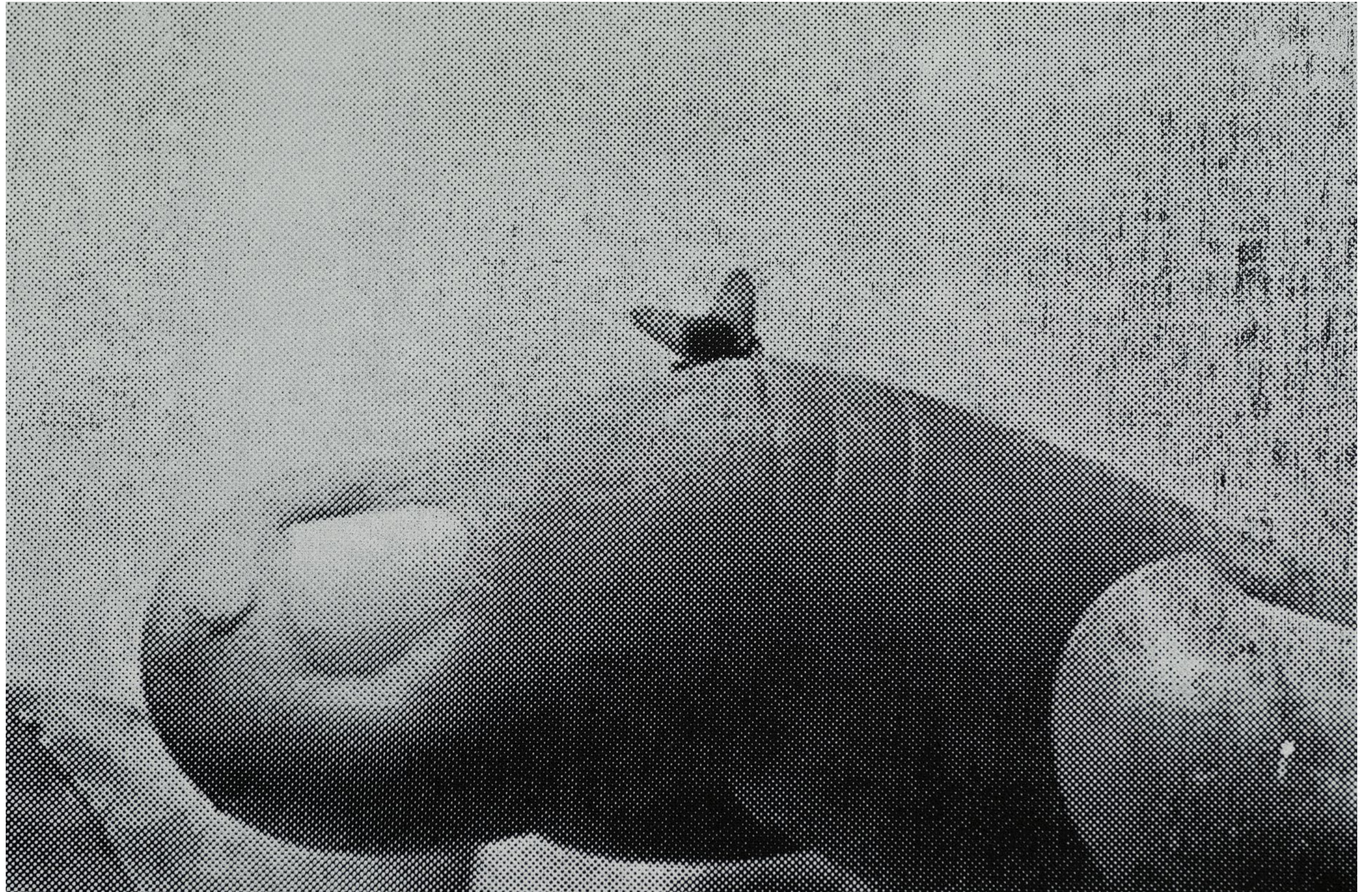
DESASTRES 27-mazatlan-mexico-had-4875-homicides-per-100000-residents.jpg variation, 2024  
Liquitex titanium white heavy body acrylic with gloss and screen-print medium on Belle Art 96U  
Fine 360gsm black double primed linen  
150 x 240 cm  
Unique state + Unique AP  
(PAL-MF20008)



DESASTRES 27-mazatlan-mexico-had-4875-homicides-per-100000-residents.jpg variation, 2024  
Liquitex titanium white heavy body acrylic with gloss and screen-print medium on Belle Art 96U  
Fine 360gsm black double primed linen  
150 x 240 cm  
Unique state + Unique AP  
(PAL-MF20008)



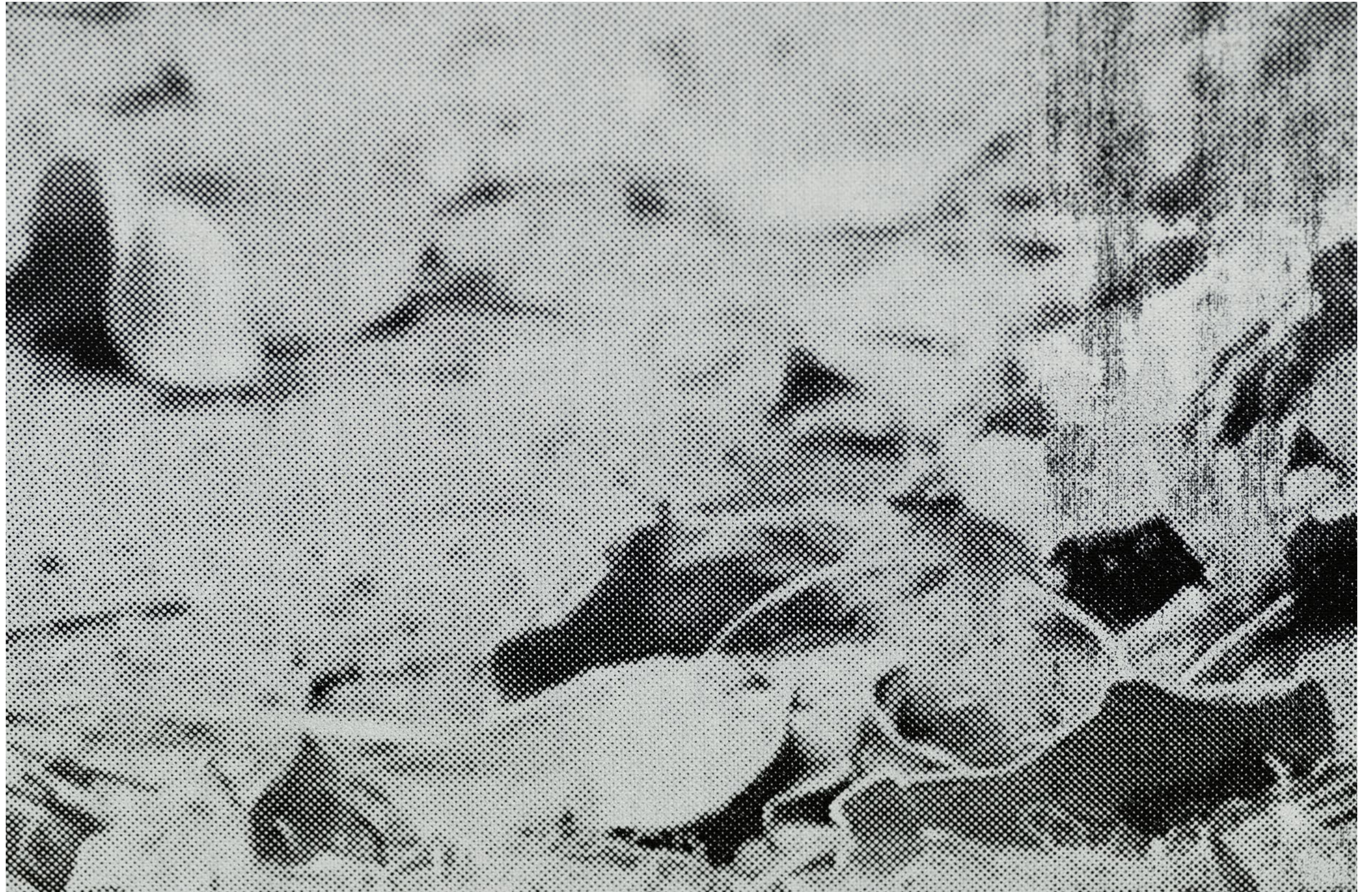
DESASTRES 27-mazatlan-mexico-had-4875-homicides-per-100000-residents.jpg variation, 2024 (detail)  
Liquitex titanium white heavy body acrylic with gloss and screen-print medium on Belle Art 96U Fine 360gsm black double primed linen  
150 x 240 cm  
Unique state + Unique AP  
(PAL-MF20008)



DESASTRES 27-mazatlan-mexico-had-4875-homicides-per-100000-residents.jpg variation, 2024 (detail)  
Liquitex titanium white heavy body acrylic with gloss and screen-print medium on Belle Art 96U Fine 360gsm black double primed linen  
150 x 240 cm  
Unique state + Unique AP  
(PAL-MF20008)



DESASTRES 27-mazatlan-mexico-had-4875-homicides-per-100000-residents.jpg variation, 2024 (detail)  
Liquitex titanium white heavy body acrylic with gloss and screen-print medium on Belle Art 96U Fine 360gsm black double primed linen  
150 x 240 cm  
Unique state + Unique AP  
(PAL-MF20008)



# PALAS<sup>®</sup>

© PALAS and the Artist/s. All artwork and content in this document is the sole property and copyright of PALAS and the Artist/s. Under no circumstance may you copy, share, reproduce, modify, publish or distribute elsewhere, in any medium, any of the images or content in this document for any purpose, without proper and prior written permission from PALAS. Unauthorised duplication, distribution or usage is prohibited by the Copyright Law.

PALAS acknowledges the Traditional Custodians of the land on which we live and work. We acknowledge their continuing connection to land, water and community.

[palas-inc.com](https://palas-inc.com)