

Palai Penang



Homestead, Penang, Malaysia
22 March - 14 April 2024

Palai Penang



Palai Penang

Palai Penang is the third edition of Palai, an itinerant exhibition organised by Paris based Galerie Balice Hertling to present international contemporary artworks in heritage homes. The first two editions of Palai were held in a historic palazzo in the center of Lecce, Italy. Blank Canvas, a non-profit art space in Penang, Malaysia, is delighted to collaborate with Galerie Balice Hertling to present Palai Penang in Malaysia, the first edition of Palai in Asia.

The word “palai” means “palace” in the Apulian dialect of the Griko people, an ethnic Greek community in southern Italy. Its etymological origin lies in the Latin palātum or palate, which refers to the origin of taste and judgment. And it is not surprising that the word “palace” usually conjures up an immediate image of a grand space of imposing architectural features and housing precious and tasteful objects. Yet, and perhaps less immediately intuitive, a “palace” is also a residence, or a home, which then evokes the more intimate feelings of ease and relaxation as one is welcomed into the home of another.

Palai avows therefore to both awe the viewer as well as to extend a warm hand of hospitality. Palai Penang promises to build on the legacy of the earlier editions.

Palai Penang presents in one of Penang’s largest and most elegant colonial mansions – Homestead. Built in 1919 and designed by architect James Stark, Homestead was acquired by the Penang businessman and philanthropist Yeap Chor Ee during the 1940s. Mr Yeap’s grandson and the trustees of his estate donated Homestead to the WOU (Wawasan Open University) in 2006. Although Homestead may be a continent away from the Italian palazzo of the earlier editions of Palai, they share in common the ability to awe and impress visitors as well as, perhaps surprisingly, echoes of an Italian architectural lineage. It is both fate and serendipity that the grand neo-classical details of Homestead’s architecture appear to be inspired by a sixteenth century Italian villa designed by Andrea Palladio.

Palai Penang gathers a selected group of international art galleries from East and Central Asia, the Americas and Europe into a single venue, offering access to international artists and artistic practices to local visitors in Malaysia.

At Palai Penang, the participating galleries present a diverse range of contemporary artistic practices within the environs of a classical building. These include video works, installations, collages, paintings and sculpture. Some works are ephemeral. While others, especially those of Penang-based artists Okui Lala, Chan Kok Hooi and Hoo Fan Chon, are inspired directly by, and respond poignantly to, the architecture and history of the exhibition venue.

As with the previous editions, Palai Penang seeks to inspire various conversations – between the contemporary art works presented by the participating international galleries and the historical architecture and ambiance of its venue, among the artworks themselves, between the international artists and the local artists featured and, of course, among the visitors.

Co-Organiser:

**BALICE
HERTLING**
GALERIE

**BLANK
CANVAS**

Exclusive Venue
Sponsor:

WOU® **WAWASAN**
OPEN UNIVERSITY

Sponsored by:



LARRY'S LIST

SKYLINE
PUBLIC ART

Athanatos

ADSI
Associazione Dimore Storiche Italiane
Sezione Puglia



Palai Penang

Homestead, Penang, Malaysia
22 March - 14 April 2024

Collectively Presented By:

Balice Hertling - France
Blank Canvas - Malaysia
Delgosha - Iran
Ermes Ermes - Italy

Isla Flotante - Argentina
LC Queisser - Georgia
Loy Gallery - Singapore
PHD Group - Hong Kong S.A.R. China

Participating Artists:

Alex Ayed
Chan Kok Hooi
Dana DeGiulio
Enzo Cucchi
Evian Wenyi Zhang
Hoo Fan Chon
Jieun Lim
Julie Beaufls
Julio Linares
Ketuta Alexi-Meskhishvili
Mariela Scafati
Michele Chu
Mostafa Sarabi
Nick Bastis

Okui Lala
Sasaoka Yuriko
Shabahang Tayyari
Shi Liu
Sitara Abuzar Ghaznawi
Thea Gvetadze
Tsherin Sherpa
Wang Haining
Wang Xiaolin
Wang Yuyu
Will Benedict
Willem de Rooij
Won Cha
Zhi Wei

Palai Penang



Palai Penang



Palai Penang



Palai Penang



Palai Penang



Palai Penang



Palai Penang



Palai Penang



Palai Penang



Palai Penang



Palai Penang



Palai Penang



Palai Penang



Palai Penang



Palai Penang



Palai Penang



Palai Penang



Palai Penang



Palai Penang



Palai Penang



Palai Penang



Palai Penang



Palai Penang



Palai
Penang

ARTWORKS

Palai Penang



Chan Kok Hooi

The Painting: Sweeter than Words, 2023

Acrylic on the palette for 'The Painting:

A Quiet Play'; wooden frame

44 x 49 cm

For inquiries :

Blank Canvas - info@blankcanvas.my

Palai Penang



Chan Kok Hooi

The Painting: A Quiet Play, 2023

Acrylic on wooden frame

32 x 39.5 cm

For inquiries :

Blank Canvas - info@blankcanvas.my

Palai Penang



Chan Kok Hooi

The Sea: Special Song for the Broken Hearted, 2023

Acrylic, seashells & sand on wood;
perspex & wooden frame
13 x 77 cm

For inquiries :
Blank Canvas - info@blankcanvas.my

Palai Penang



Chan Kok Hooi

Introvert Rhapsody, 2024

Party light projector, objects from storerooms
Site specific

For inquiries :
Blank Canvas - info@blankcanvas.my

Palai Penang



Chan Kok Hooi

Grey Cloud and Crescent Moon

(after Cattelan's 'Comedian'), 2024

Duct tape & acrylic on found cardboard

80 x 173 cm / site specific

For inquiries :

Blank Canvas - info@blankcanvas.my

Palai Penang



Hoo Fan Chon

Everyday No Parking Sculptures, 2024

Readymade no parking sculptures; on-site
photo tiles installation, laserjet prints
dimensions variable
Edition of 3 + 1 AP

For inquiries :
Blank Canvas - info@blankcanvas.my

Palai Penang



Hoo Fan Chon

Everyday No Parking Sculptures, 2024

Readymade no parking sculptures; on-site
photo tiles installation, laserjet prints
dimensions variable
Edition of 3 + 1 AP

For inquiries :
Blank Canvas - info@blankcanvas.my

Palai Penang



Hoo Fan Chon

*Artist's impression series – Homestead
(Northam Road, Penang), 2024*

Watercolour and gouache on acid free paper
42 x 59.4 cm

For inquiries :
Blank Canvas - info@blankcanvas.my

Palai Penang



Okui Lala

Chinese Whisper, 2018

Two channel video installation,
4.51 min (5 edition)

For inquiries :
Blank Canvas - info@blankcanvas.my

Palai Penang



Alex Ayed

Untitled (Seagull), 2023

Taxidermied seagull / mouettetaxidermée
37 x 25 x 10 cm

For inquiries :
Balice Hertling - gallery@balicehertling.com

Palai Penang



Zhi Wei

Henry, 2020

Chinese ink dyed plaid, buttons, crinoline, inflatable ball, stainless steel cable and thread
120 x 80 cm

For inquiries :
Balice Hertling - gallery@balicehertling.com

Palai Penang



Julie Beaufls

Sans Titre, 2022

Huile sur toile / Oil on linen

30 x 30 cm

For inquiries :

Balice Hertling - gallery@balicehertling.com

Palai Penang



Mostafa Sarabi

Untitled, 2024

Acrylic on canvas
200 x 160 cm

For inquiries :
Balice Hertling - gallery@balicehertling.com

Palai Penang



Enzo Cucchi

Untitled, 2010

Oil on wood

26 x 30 x 2 cm

For inquiries :
Balice Hertling - gallery@balicehertling.com

Palai Penang



Will Benedict

Apologize to the Future (Wolf Eyes Remix), 2020
HD video with sound (8:16 min)

For inquiries :
Balice Hertling - gallery@balicehertling.com

Palai Penang



Mostafa Sarabi

Untitled, 2024

Acrylic on canvas
200 x 160 cm

For inquiries :
Delgosha - delgoshagallery@gmail.com

Palai Penang



Willem de Rooij

Bouquet X, 2014

Flower arrangement and vase
Dimensions variable

For inquiries :
Delgosha - delgoshagallery@gmail.com

Palai Penang



Shabahang Tayyari

Not titled yet, 2024

Fabrics and metal structure

Dimensions variable

For inquiries :

Delgosha - delgoshagallery@gmail.com

Palai Penang



Shabahang Tayyari

Tiger, blue, red, yellow, 2022
Gouache on unprimed canvas
100 x 120 cm

For inquiries :
Delgosha - delgoshagallery@gmail.com

Palai Penang



Mariela Scafati

Lisa Tropical perdió las pestañas en la arena, 2023

Clothes, rope, steel
240 x 25 x 60 cm
(Left)

Interior, 2023

Skirt, rope, steel
240 x 35 x 65 cm
(Middle)

Vanny, 2019

Skirt, rope, steel
80 x 45 x 45 cm
(Right)

For inquiries :
Isla Flotante - leopol@islaflotante.com

Palai Penang



Mariela Scafati

Lisa Tropical perdió las pestañas en la arena, 2023

Clothes, rope, steel
240 x 25 x 60 cm
(Left)



Interior, 2023

Skirt, rope, steel
240 x 35 x 65 cm
(Middle)



Vanny, 2019

Skirt, rope, steel
80 x 45 x 45 cm
(Right)

Palai Penang



Nick Bastis

Treble, 2017 (detail)

Lathe-turned brass

10 x 3 x 3 cm

For inquiries :

Ermes Ermes - info@ermes-ermes.com

Palai Penang



Nick Bastis

909, 2017
Lathe-turned brass
10 x 3 x 3 cm
(Left)

Cent, 2024
Aluminium
10 x 3 x 3 cm
(Right)

For inquiries :
Ermes Ermes - info@ermes-ermes.com

Palai Penang



Nick Bastis

Computer 1, 2018

Found publications, metals, copper wire, coins, tubes, tape, plastic, glass
39 x 28 x 10 cm
(Left)

Computer 2, 2018

Found publications, metals, copper wire, coins, tubes, tape, plastic, glass
28 x 28 x 6 cm
(Right)

For inquiries :
Ermes Ermes - info@ermes-ermes.com

Palai Penang



Dana DeGiulio

My whole waking life forgot, 2022

Oil on panel

40.6 x 30.5 cm

For inquiries :
Ermes Ermes - info@ermes-ermes.com

Palai Penang



Dana DeGiulio

Coda coda coda coda coda. prick, 2021

Oil on panel

40.6 x 30.5 cm

For inquiries :

Ermes Ermes - info@ermes-ermes.com

Palai Penang



Dana DeGiulio

Soft Brain, 2020

Oil on panel

40.6 x 30.5 cm

For inquiries :
Ermes Ermes - info@ermes-ermes.com

Palai Penang



Jieun Lim

Untitled (Insect series), 2018

Inkjet print on photo paper

59 x 42 cm

Edition 2/3 + 1 A.P.

For inquiries :

Ermes Ermes - info@ermes-ermes.com

Palai Penang



Jieun Lim

Untitled (Insect series), 2018

Inkjet print on photo paper

59 x 42 cm

Edition 3/3 + 1 A.P.

For inquiries :

Ermes Ermes - info@ermes-ermes.com

Palai Penang



Jieun Lim

Dear and Dearest, 2020/ 2024

Inkjet print on paper

68 x 92 cm

Edition 1/3 + 1 A.P.

For inquiries :

Ermes Ermes - info@ermes-ermes.com

Palai Penang



Michele Chu

Body as Lifeguard Tower I, 2022

Toned cyanotype on cotton

107 x 182 cm

For inquiries :

PHD Group - willem@phdgroup.com

Palai Penang



Michele Chu

Body as Lifeguard Tower II, 2022

Toned cyanotype on cotton

182 x 107 cm

For inquiries :
PHD Group - willem@phdgroup.com

Palai Penang



Michele Chu

Hot Tears, Shivering Skin I, 2022

Toned cyanotype on cotton

182 x 107 cm

For inquiries :
PHD Group - willem@phdgroup.com

Palai Penang



Michele Chu

Hot Tears, Shivering Skin II, 2022

Toned cyanotype on cotton

182 x 107 cm

For inquiries :
PHD Group - willem@phdgroup.com

Palai Penang



Michele Chu

Hot Tears, Shivering Skin III, 2022

Toned cyanotype on cotton

182 x 107 cm

For inquiries :
PHD Group - willem@phdgroup.com

Palai Penang



Sasaoka Yuriko

Gyro, 2018

Single-channel video with color and sound
5 min 45 sec (Edition of 20)

For inquiries :
PHD Group - willem@phdgroup.com

Palai Penang



Sasaoka Yuriko

Gyro: Hand Puppet Chicken, 2023
Oil pastel on linen, thread, beads, sequins
26 x 26 cm

For inquiries :
PHD Group - willem@phdgroup.com

Palai Penang



Sasaoka Yuriko

Gyro: Hand Puppet Tiger, 2023

Oil pastel on linen, thread, beads, sequins
26 x 26 cm

For inquiries :
PHD Group - willem@phdgroup.com

Palai Penang



Thea Gvetadze

The House you live in, 2008-2022
Mixed media on canvas and wood
15.5 × 10.5 cm
(Left)

The House you live in, 2008-2022
Mixed media on canvas and wood
15.5 × 10.5 cm
(Right)

For inquiries :
LC Queisser - lisa@lc-queisser.com

Palai Penang



Thea Gvetadze

To Simon Machabeli 02, 2022

Oil on paper

31.5 × 23.3 cm

For inquiries :

LC Queisser - lisa@lc-queisser.com

Palai Penang



Ketuta Alexi-Meskhishvili

Toma Qajar Eyes, 2022

Two archival pigment prints on screen film in a box frame

30.6 × 22.7 cm

32.5 × 25.2 × 4 cm (framed)

Edition 1/2 + II AP

For inquiries :
LC Queisser - lisa@lc-queisser.com

Palai Penang



Ketuta Alexi-Meskishvili

Pink Anthurium Pharynx, 2020

Two archival pigment prints on screen film in a box frame

30.6 × 22.7 cm

32.5 × 25.2 × 4 cm (framed)

Edition 2/2 + II AP

For inquiries :
LC Queisser - lisa@lc-queisser.com

Palai Penang



Sitara Abuzar Ghaznawi

Untitled, 2023

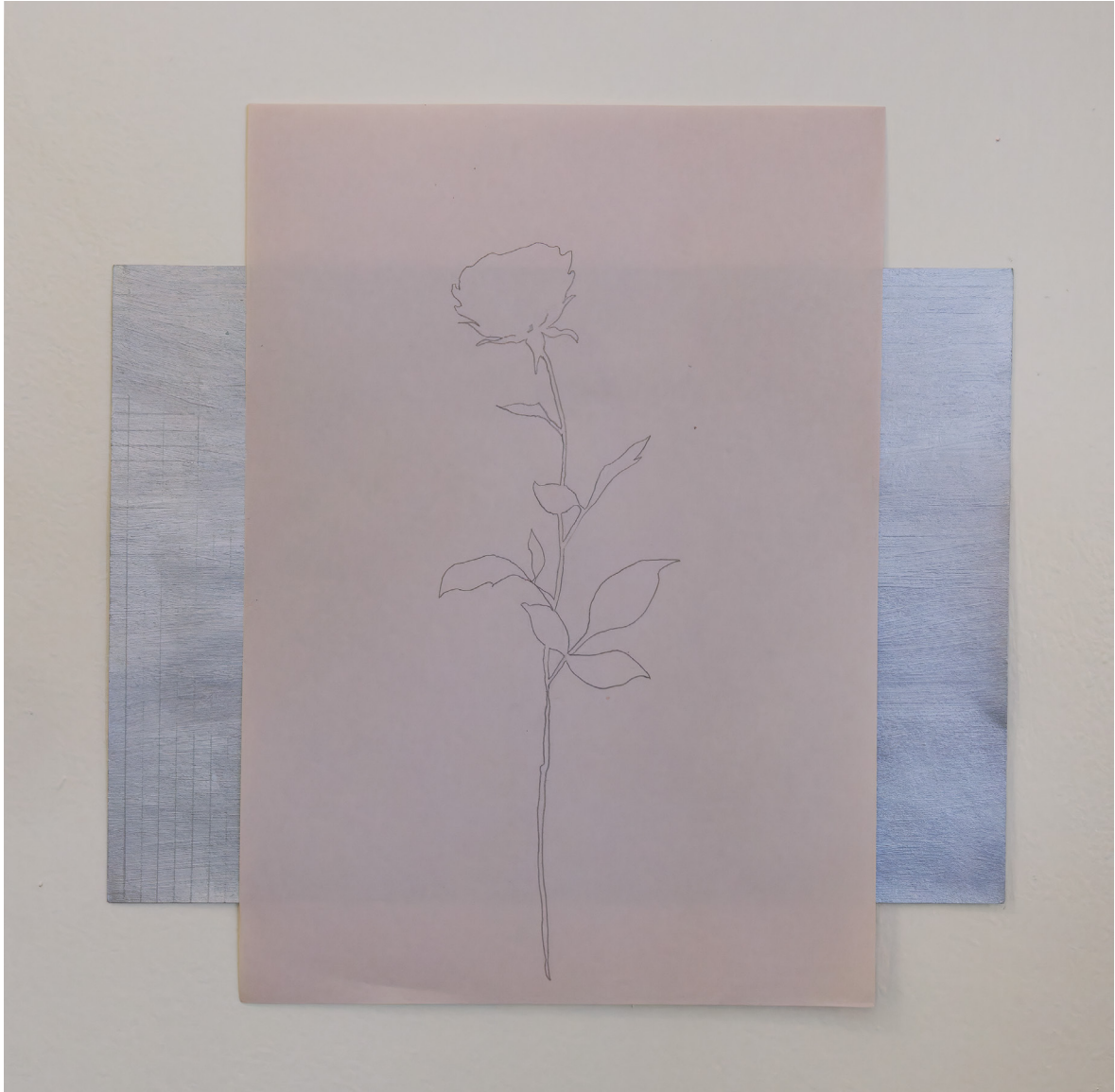
Acrylic paint, charcoal on paper

Each 21 x 29.7: 63 x 89.1 cm

For inquiries :

LC Queisser - lisa@lc-queisser.com

Palai Penang



Sitara Abuzar Ghaznawi

Mourning interval #2, 2023

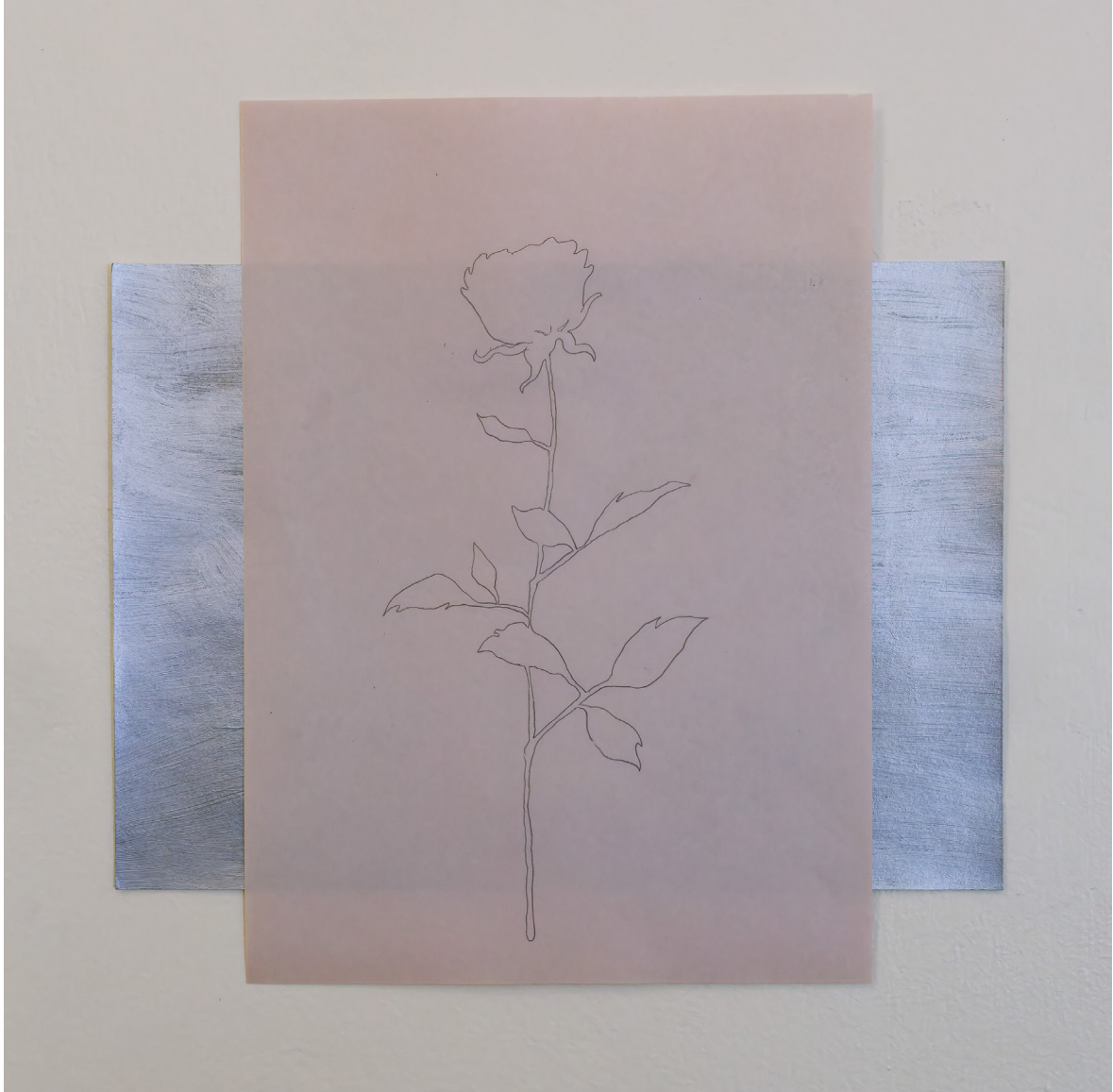
Acrylic & pencil on paper

29 × 29.5 cm

For inquiries :

LC Queisser - lisa@lc-queisser.com

Palai Penang



Sitara Abuzar Ghaznawi

Mourning interval #4, 2023

Acrylic & pencil on paper

29 × 29.5 cm

For inquiries :

LC Queisser - lisa@lc-queisser.com

Palai Penang



Won Cha

Take Away, 2024

Digital collage, C-Print
21 x 29.7 cm

For inquiries :
LC Queisser - lisa@lc-queisser.com

Palai Penang



Won Cha

Swan Song, 2024

Digital collage, C-Print

42 × 29.7 cm

For inquiries :

LC Queisser - lisa@lc-queisser.com

Palai Penang



Won Cha

Take Away, 2024

Digital collage, C-Print

31.5 × 21 cm

For inquiries :

LC Queisser - lisa@lc-queisser.com

Palai Penang



Won Cha

Untitled, 2024

Digital collage, C-Print

21 × 14.8 cm

For inquiries :

LC Queisser - lisa@lc-queisser.com

Palai Penang



Won Cha

Cover me tender, 2024

Digital collage, C-Print

29.7 × 21 cm

For inquiries :

LC Queisser - lisa@lc-queisser.com

Palai Penang



Shi Liu

The Half-finished Heaven, 2024

Dual-channel video, HD video, color,
sound 01:55 minutes

For inquiries :
Blank Canvas - info@blankcanvas.my

Palai Penang



Shi Liu

Grandpa 2024, 2024

Antique desk, writing robot, paper

Variable Size

For inquiries :

Blank Canvas - info@blankcanvas.my

Palai Penang



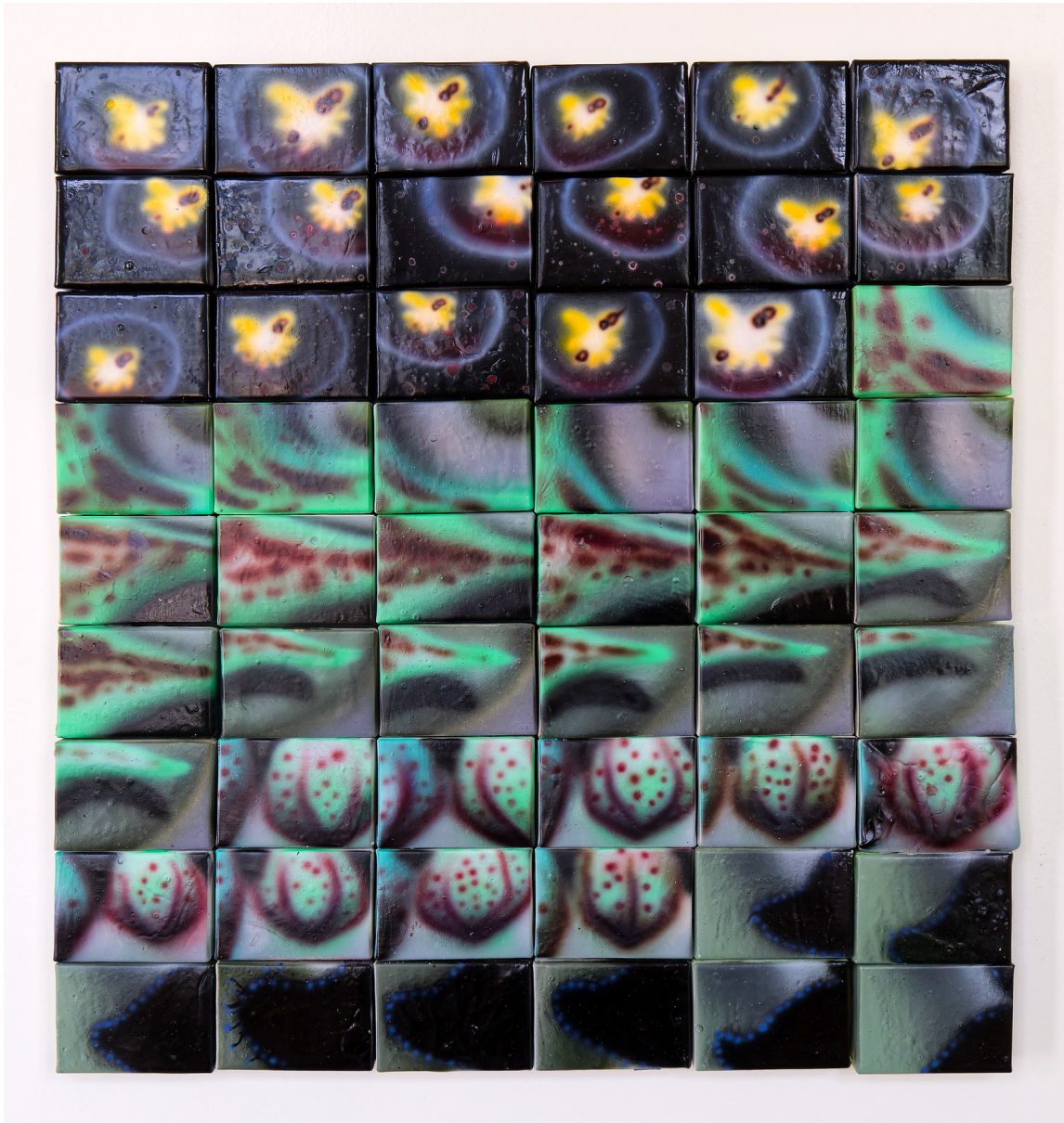
Wang Yuyu

Haustorium: Partial Dissolution, 2024

Dye bass wood, silicone, acrylic, steel
beads, agate beads,
300 x 20 x 30cm

For inquiries :
Blank Canvas - info@blankcanvas.my

Palai Penang



Evian Wenyi Zhang

Starfish in Drought, 2024

Acrylic on canvas

(54 Units) 62.2 × 64.7 × 2.5 cm

For inquiries :

Blank Canvas - info@blankcanvas.my

Palai Penang



Wang Haining

Tomorrow Never Came, 2023

Silicone, PVC, electric pump, dyed water, sugar, milk, shampoo, shower gel, lotion, sunscreen, essential oils
160 x 120 x 120cm

For inquiries :
Blank Canvas - info@blankcanvas.my

Palai Penang



Tsherin Sherpa

This is not a Rorschch 100 KNOTS, 2022

Highland Tibetan Wool, Chinese Silk,
Cotton Warp, and Weft
304.8 x 243.84 cm

For inquiries :
Loy Gallery - info@loygallery.com

Palai Penang



Julio Linares

Horse in the Night 1, 2023

Acrylic on Canvas

116 x 146 cm

For inquiries :

Loy Gallery - info@loygallery.com

Palai Penang



Wang Xiaolin

Nocturne journal No. 7, 2021
Overgraze Porcelain Painting
30 x 30 cm
(Left)

Winter journal No. 7, 2021
Overgraze Porcelain Painting
30 x 30 cm
(Right)

For inquiries :
Loy Gallery - info@loygallery.com

Palai Penang



Wang Xiaolin

The Suspended Space, 2019
Overgraze Porcelain Painting
50 x 50 cm
(Left)

Nights with you No.1, 2022
Overgraze Porcelain Painting
50 x 50 cm
(Right)

For inquiries :
Loy Gallery - info@loygallery.com

Palai Penang

Co-Organiser:

**BALICE
HERTLING**
GALERIE

**BLANC
CANVAS**

Exclusive Venue
Sponsor:

WOU® **WAWASAN**
OPEN UNIVERSITY

Sponsored by:



LARRY'S LIST

SKYLINE
PUBLIC ART

Athanatos

ADSI
Associazione Dinosauri Storiche Italiane
Sezione Puglia

