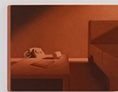
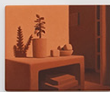
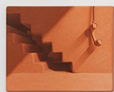
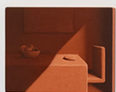


**Jill Tate**  
**Ground Truthing**













**Jill Tate**

*Floored*

2024

Oil on wood

50 x 40 cm













**Jill Tate**

*On the Edge*

2024

Oil on wood

150 x 120 cm









**Jill Tate**

*Matter of Fact*

2024

Oil on wood

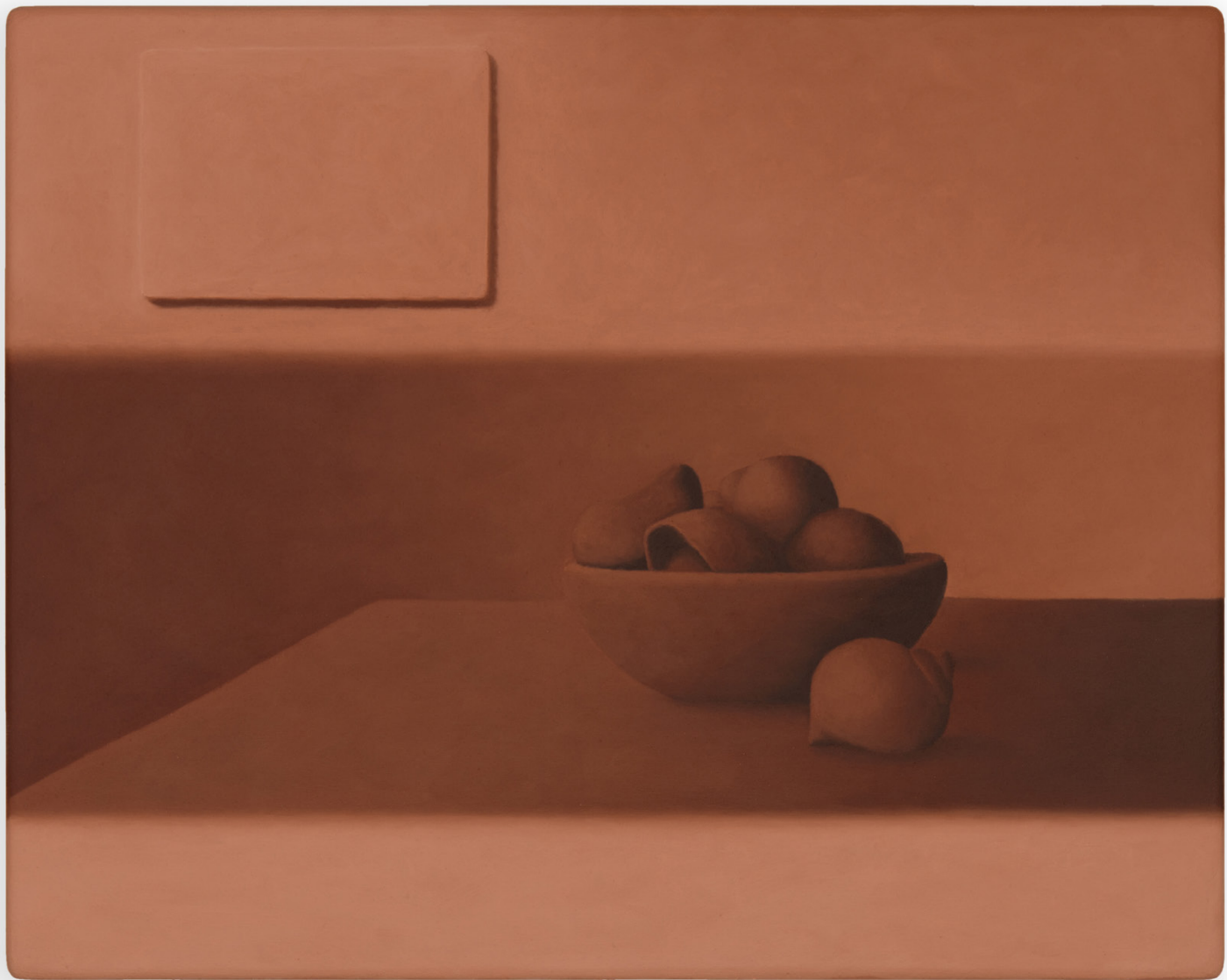
40 x 50 cm

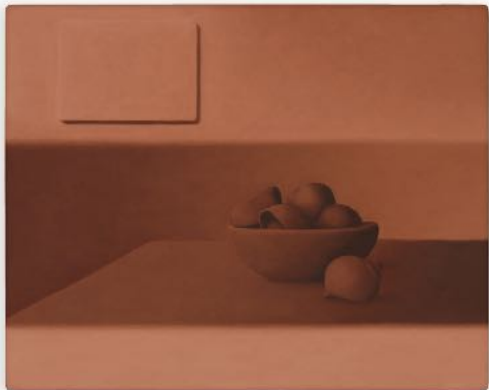






**Jill Tate**  
*Heavy Light*  
2024  
Oil on wood  
40 x 50 cm





**Jill Tate**

*Thin Skin*

2024

Oil on wood

40 x 50cm









**Jill Tate**  
*Grain of Truth*  
2024  
Oil on wood  
100 x 80 cm







**Jill Tate**

*Whole Parts*

2024

Oil on wood

100 x 80 cm





**Jill Tate**

*Out of touch*

2024

Oil on wood

40 x 50cm







**Jill Tate**

*On and On*

2024

Oil on wood

40 x 50cm

## Jill Tate

### Ground Truthing

12th – 27th April 2024

PV Thursday 11th April 6pm

Jill Tate's solo exhibition at Seventeen is the first in a series of collaborations with Gertrude the art app.

Tate's latest body of work explores the concept of ground truth – information derived from direct observation – and its profound relevance to contemporary perceptions of reality, especially in light of quantum physics.

Drawing from an archaeological perspective, Tate meticulously examines the nuanced relationship between visible and invisible structures shaping our surroundings. The exhibition serves as a catalyst for contemplation, prompting audiences to reflect on the notion of dwelling and the compelling contrast between comfort and constraint within its walls.

Tate's monochromatic paintings dig down to the underlying unity at the root of all things with terracotta hues infusing her canvases, connecting ideas of dwelling at various scales. Iron oxide, linking the cosmos, the planet, and our own bodies, bridges the perceived gap between the internal and external, the personal and universal. Home emerges as the nucleus of our consciousness and the universe simultaneously—a shared space, for better or worse.

The warmth of these earthy tones balances the potential coldness of the empty spaces in Tate's work, creating a tension between comfort and discomfort. Drawing inspiration from earth architecture—mud-brick, adobe, and other raw earth buildings—the artworks exude qualities of softness, naturalness, and ancient minimalism. Rounded forms evoke a sense of comfort and handcrafted intimacy, inviting quiet contemplation and reflection.

Absence pervades Tate's compositions, devoid of human presence, fostering a meditative atmosphere and providing ample room for thought. Light and dark play across the canvases, symbolising comfort and fear, hope, and the manipulation of shadows. Quiet contemplation and reduction to the bare essentials define the artworks, offering space for meditation and deep reflection.

For this body of work, Tate has meticulously crafted her own paint using linseed oil and natural earth pigments, imbuing the materials with simplicity and natural authenticity. Rounded edges in both subject matter and painting panel dissolve sharp boundaries, fostering a sense of unity and softness.

To learn more about Jill Tate and to see a preview of her works please follow her [here](#).