

Post Culture

September 7 through October 26, 2013

Main Gallery

1.



Julia Wachtel

ACv2.8 (Waiting Room), 2013

Signed and dated, verso

3 panels, flashe on canvas, and screen ink on canvas

25 1/2 x 73 1/2 in (64.8 x 186.7 cm)

(EDG6918)

2.



Gabriele Beveridge

Mostly that your face is like the sky behind the Holiday Inn, 2013

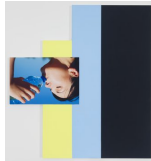
Steel, dusty window blinds, hand-made glass, sand, printed advertisement, broken wine glass, artist frame

41 3/8 x 34 5/8 x 10 5/8 in

105 x 88 x 27 cm

(EDG6923)

3.



Julia Wachtel

ACv2.4, 2012

Signed and dated, verso

Flashe on canvas, digital print on canvas

46.06 x 42.72 in (117 x 108.5 cm)

(EDG6902)

4.



Julia Wachtel

ACv2.5, 2012

Flashe and digital print on canvas

48.03 x 87.01 in (122 x 221 cm)

(EDG6910)

5.



Torben Ribe

If You Are What You Do, Who Are You When You Lose Your Job, 2010-12

Acrylic, leather scraps and facial mask product on canvas

70 7/8 x 51 1/8 in

180 x 130 cm

(EDG6912)

6.



Gabriele Beveridge

Post-Exertion Visibility, 2013

Wind chime, sand, steel peg board, peg hooks, glass beads,
printed advertisement, various rocks, ponytail, artist frame

39 3/8 x 47 1/4 x 9 7/8 in

100 x 120 x 25 cm

(EDG6920)

7.



Julia Wachtel

Doughnutville, 1992

Oil, acrylic and silkscreen ink on canvas

22 1/2 x 43 3/4 in (57.1 x 111.1 cm)

(EDG6916)

Back Gallery

1.



Torben Ribe

Composition with Tree, 2011

Acrylic and coffee with milk on canvas, artificial tree

80 3/4 x 47 1/4 x 31 1/2 in

205 x 120 x 80 cm

(EDG6913)

2.



Leo Gabin

Untitled (Black and White Hexptych), 2013

Silkscreen and spray-paint on Trovitex PVC foam-board

(EDG6872)

3.



Torben Ribe

Untitled with Pizza Menus, 2011

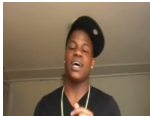
Granite paint on canvas, pizza menus

78 3/4 x 47 1/4 in

200 x 120 cm

(EDG6914)

4.



Leo Gabin

Oh Baby, 2013

Digital Video

Edition 1 of 3 2 AP's

(EDG6943)

Side Gallery

1.



Tamar Halpern

Gutter Glitter (Ode to R. Hell), 2013

titled, signed, and dated, verso

UltraChrome ink, linen, and archival ink jet paper on linen

52 x 42 in

132.1 x 106.7 cm

(EDG6924)

2.



Tamar Halpern

Solar Eclipse in September, 2013

titled, signed, and dated, verso

UltraChrome ink, linen, and archival ink jet paper on linen

52 x 42 in

132.1 x 106.7 cm

(EDG6927)

3.



Tamar Halpern

The Ghost Sonata, 2013

titled, signed, and dated, verso

UltraChrome ink, linen, and archival ink jet paper on linen

68 x 58 in

172.7 x 147.3 cm

(EDG6929)

4.



Tamar Halpern

Degradation of Film, 2013

titled, signed, and dated, verso

UltraChrome ink, linen, and archival ink jet paper on linen

68 x 58 in

172.7 x 147.3 cm

(EDG6928)

5.



Tamar Halpern

Luther Played the Boogie, 2013

titled, signed, and dated, verso

UltraChrome ink, linen, and archival ink jet paper on linen

52 x 42 in

132.1 x 106.7 cm

(EDG6926)

Front Gallery

1.



Miranda Lichtenstein

Cue, 2013

Archival Pigment Print, Edition of 5

127 x 85.1 cm

Edition of 5 + 2AP

50 x 33.5 inches

(EDG6909)