

KARL LARSSON TWELVE HOURS



KARL LARSSON

-ING

2013, silkscreen print, marker, 84 x 58 x 4 cm, framed



KARL LARSSON

YOU MUST BE ABLE TO INTERRUPT A FRIENDLY CONVERSATION AT ALL MOMENTS

2013, concrete, 60 x 60 x 26 cm



KARL LARSSON

WAS THE LITTLE "YES" A VERY FRIENDLY "NO"?

2013, bronze, digital camera, spray paint, 15 x 8 x 10 cm



KARL LARSSON

IS IT ALMOST LIKE A SUMMER'S DAY?

2013, bronze, digital camera, spray paint, 21 x 16 x 18.5 cm



KARL LARSSON

SAUNDERS WATERFORD SERIES (BIRTHDAY)

2013, silkscreen print, 84 x 58 x 4 cm, framed



KARL LARSSON

BÜHNE CARPET

2013, hand-tufted carpet, 295 x 200 x 1.5 cm



KARL LARSSON

WHERE DO WE COMPLAIN?

2013, bronze, digital camera, 16 x 12 x 18.5 cm



KARL LARSSON

WE SEE A GROWING HUNGER, HOSTILITY, WHEN THEY ARE NOT TREATED SERIOUSLY

2013, silkscreen print, marker, 84 x 58 x 4 cm, framed



KARL LARSSON

I WANT TO LIVE WITH THE CONSEQUENCES OF MY ACTIONS (ME 2!) [+ DRAWING OF A TREE]

2013, silkscreen print, drawing, 84 x 58 x 4 cm, framed



KARL LARSSON

YOU MUST BE ABLE TO INTERRUPT A FRIENDLY CONVERSATION AT ALL MOMENTS

2013, concrete, paint, 60 x 60 x 28 cm

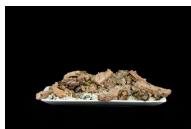


KARL LARSSON

INVOLVEMENT, SEPTEMBER 2013

2013, silkscreen print, 84 x 58 x 4 cm, framed

OFFICE



SIMON DYBBROE MØLLER

RUMP

2013, Boeuf Stroganoff photographed by Enrique Macias, c-print,

51 x 70 cm, framed

1/3 + 1AP



SIMON DYBBROE MØLLER

SHOULDER

2013, Labskaus photographed by Nick Ask, c-print, 70 x 51 cm,

framed

1/3 + 1AP



SIMON DYBBROE MØLLER

SHANK

2013, Beef and Ale Stew photographed by Andrea Rossetti, c-print,

51 x 70 cm, framed

1/3 + 1AP



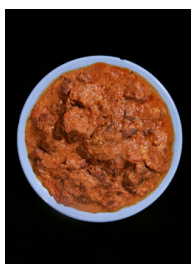
SIMON DYBBROE MØLLER

BELLY

2013, Goulash photographed by Diego Berruecos, c-print, 51 x 70

cm, framed

1/3 + 1AP



SIMON DYBBROE MØLLER

SHIN

2013, Ragout photographed by Anders Lund, c-print, 71 x 51 cm,

framed

1/3 + 1AP

KITCHEN



CHARLIE HAMMOND

PROTOTYPE WHEELIE BIN CHAIR (GENERAL HOUSEHOLD WASTE 2)
2011, wheelie bin, found frame, 87 x 74 x 41 cm

LIBRARY



CHRISTOPH MEIER

OHNE TITEL / UNTITLED
2010, steel, electronics, 116 x 25 x 40 cm