

EXPOSABLE MINES AND THE IMPIOUS CANTO



Lewis Fidock & Joshua Petherick

Wreath, 2016

Cast pigmented silicone, resin, steel, polymer paint, synthetic flock, natural cobwebs

80h x 120w x 15d cm



Lewis Fidock & Joshua Petherick

The, 2017

Fibreglass, galvanised steel, cast pigmented silicone, resin, steel, polymer paint, synthetic flock, natural cobwebs

120h x 97w x 73d cm



Lewis Fidock & Joshua Petherick

Reporter, 2019

Papier-mâché, foam-core, epoxy, cardboard, membrane rubber, insertion rubber, U channel

52h x 38w x 25d cm



Lewis Fidock & Joshua Petherick

Herring, 2021

Patinated polystyrene, gelcoat polymer resin, fibreglass, aluminium, epoxy putty, natural and synthetic pigments, synthetic polymer paint, archival varnish

40h x 190w x 30d cm



Roland Topor

Le fils du condamné, 1978

Pen and colour pencil on paper

63h x 54w cm framed



Roland Topor

Le cireur de pompes, 1973

Ink and colour pencil on paper

63h x 54w cm framed

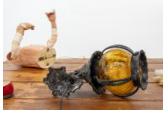


Roland Topor

La dame de compagnie, 1978

Pen and colour pencil on paper

63h x 55w cm framed



Lewis Fidock & Joshua Petherick

They are, aren't They?, 2020-24

Patinated cast metal, hand-blown glass, B22 'flame flickers', wiring,
animatronic dolls, hair, cosmetics, cables, wood

Dimensions variable