



MATTHEW CHAMBERS

*I Just Meant He Would Have If He Could Have, 2024*

colored pencil on paper

24 x 18 "

Framed: 25.75 x 19.75 x 1.5 "



KATHLEEN HERLIHY-PAOLI

*Mot-el Neon*, 1981

colored pencil

22 x 28 "

Framed: 24.25 x 32 x 1.5 "





JACQUES LOUIS VIDAL

*Three Wandering Values*, 2024

archival pen, pencil, acrylic on paper mounted on panel

24.25 x 18.25 x 0.5 "



AMI TALLMAN

*traffic jam of world-conquerors, 2023*

acrylic and oil on paper

18 x 24 "

Framed: 21.75 x 27.75 x 1.5 "





MATTHEW CHAMBERS

*The Warmth is Tangible and It Has a Shape in a Glass, 2023*

colored pencil on paper

24 x 18 "

Framed: 25.75 x 19.75 x 1.5 "



JACQUES LOUIS VIDAL

*Ima Clown Little Help Please, 2024*

archival pen, pencil, acrylic on paper mounted on panel

24.25 x 18.25 x 0.5 "



KATHLEEN HERLIHY-PAOLI

*Fortune Bowl*, 2024

colored pencil, pastel and acrylic on paper

16 x 12 "

Framed: 18.25 x 14.24 x 1.5 "





MATTHEW CHAMBERS  
*Men Deprived of Women*, 2023  
colored pencil on paper  
24 x 18 "  
Framed: 25.75 x 19.75 x 1.5 "



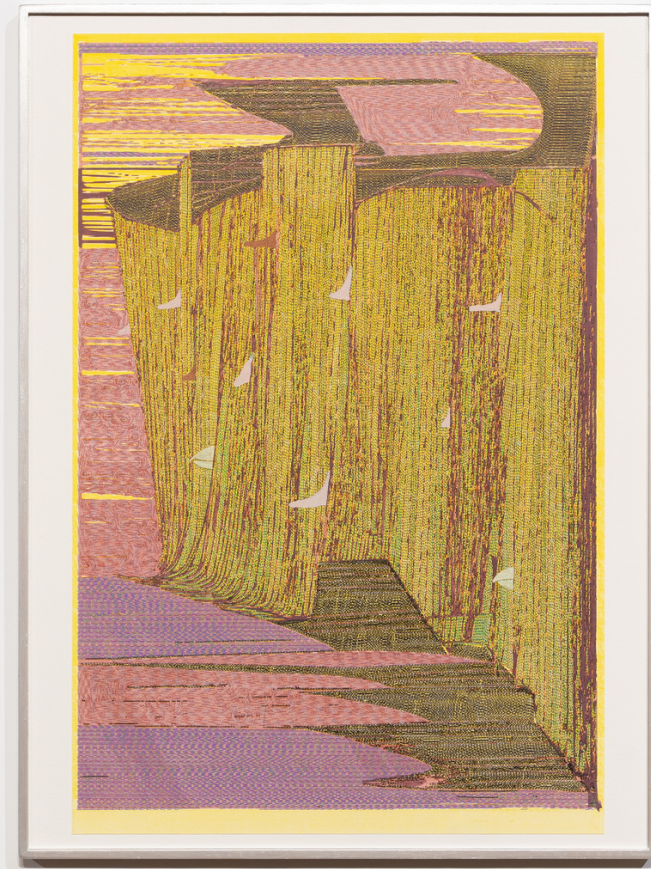
AMI TALLMAN

*Montmartre acrobat school, 1932, 2022*

ink, gouache, and acrylic on paper

13 x 17 "

Framed: 17.75 x 20.75 x 1.5 "



JACQUES LOUIS VIDAL

*Nosy Neighbors in Oblivion*, 2024

archival pen, pencil, acrylic on paper mounted on panel

24.25 x 18.25 x 0.5 "





KATHLEEN HERLIHY-PAOLI  
*Greenpoint buildings*, 1982  
colored pencil & pastel  
28 x 22 "  
Framed: 32 x 24.25 x 1.5 "



AMI TALLMAN

*provocative desperation, Hollywood, California, 1940, 2023*

gouache, watercolor, and acrylic on polypropylene

14 x 11 "

Framed: 17.75 x 14.75 x 1.5 "



KATHLEEN HERLIHY-PAOLI

*My Right Hand*, 1982

ink and colored pencil drawing

11 x 15 "

Framed: 13.5 x 17.25 x 1.5 "





MATTHEW CHAMBERS

*His Face Was an Afterthought, 2024*

pencil on paper

24 x 18 "

Framed: 25.75 x 19.75 x 1.5 "



KATHLEEN HERLIHY-PAOLI

*The pink pitcher, 1981*

colored pencil

28 x 22 "

Framed: 32 x 24.25 x 1.5 "



MATTHEW CHAMBERS

*Feeling as Rich as a Yolk in an Egg White, 2022*

pencil on paper

24 x 18 "

Framed: 25.75 x 19.75 x 1.5 "





AMI TALLMAN

*eagle attack on the rowboats at Newquay, 2022*

ink, acrylic, gouache, tempera, and colored pencil on paper

14 x 17 "

Framed: 17.75 x 20.75 x 1.5 "

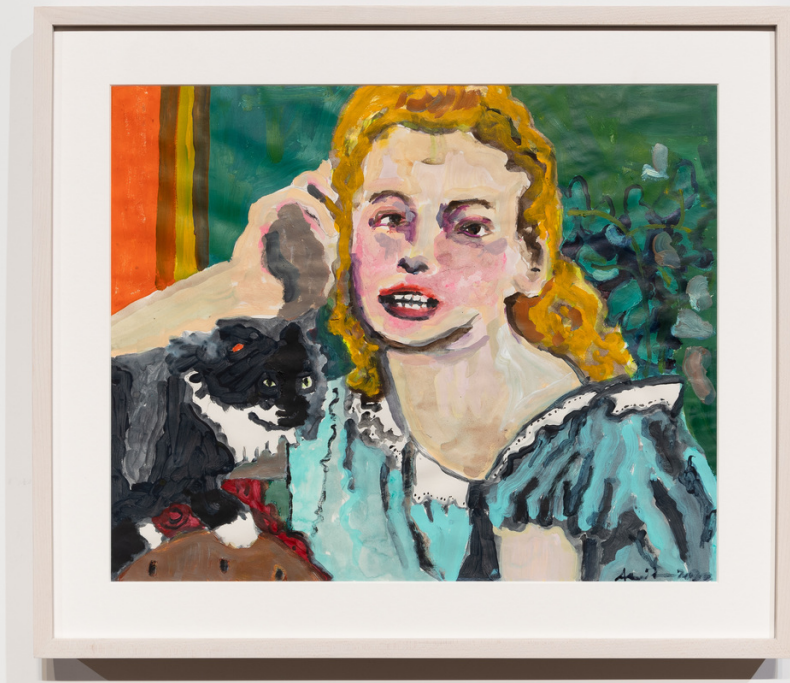


JACQUES LOUIS VIDAL

*Bug City Abandoned*, 2024

archival pen, pencil, acrylic on paper mounted on panel

24.25 x 18.25 x 0.5"



AMI TALLMAN

*postwar lingerie*, 2022

ink, acrylic, gouache, tempera, watercolor and oil on paper

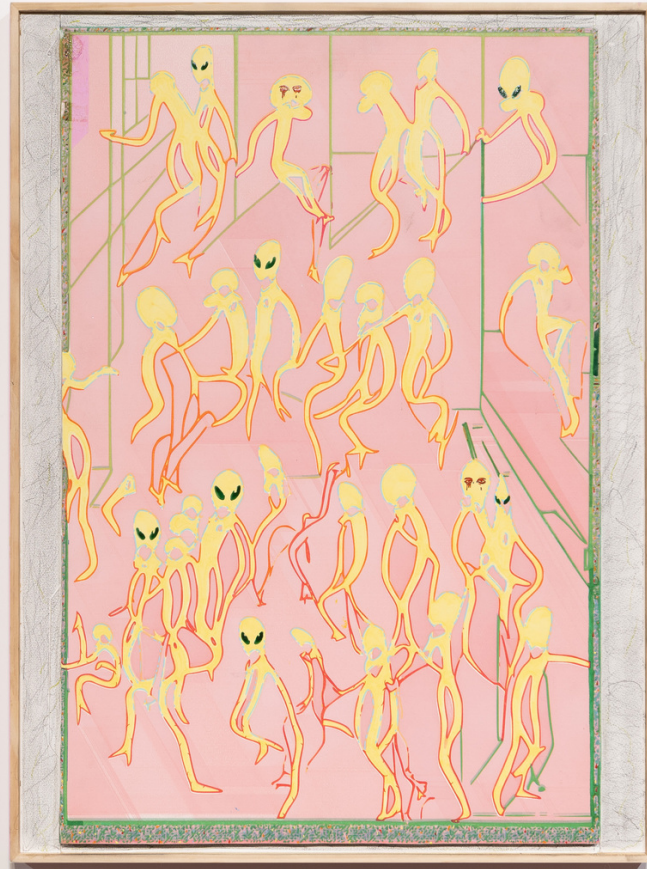
14 x 17 "

Framed: 17.75 x 20.75 x 1.5 "





KATHLEEN HERLIHY-PAOLI  
*Northside building reflections*, 1982  
colored pencil, pastel & collage  
28 x 22 "  
Framed: 32 x 24.25 x 1.5 "



JACQUES LOUIS VIDAL

*Ooze and Aliens in Lockdown, 2023*

cast resin, rubber bugs, archival pen, pencil, acrylic on paper mounted on panel  
24.25 x 18.25 x 0.5"