

ALICE AMATI

Caption sheet

Yi To: *To be dispersed, not to disappear* | 31 May – 6 July, 2024

All works: Courtesy of the artist and Alice Amati

©The artist



Yi To

Breathing Hole of Eternity, 2024

Steel door plate, steel, epoxy clay, steel chain and acrylic paint

37 1/2 x 9 x 3 in

95.3 x 22.9 x 7.6 cm

Installation dimensions variable
(YT019)



Yi To

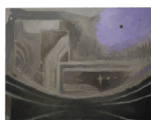
Birth Canal, 2024

Oil on board

8 1/4 in x 17 3/4 in

21 x 45 cm

(YT018)



Yi To

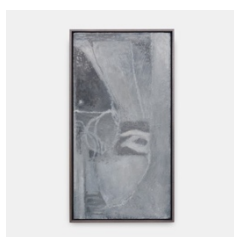
Force Majeure, 2024

Oil on canvas

39 3/8 x 51 1/8 in

100 x 130 cm

(YT017)



Yi To

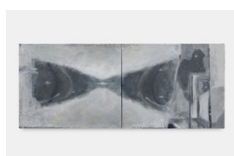
Splinter in the Mind, 2024

Oil on aluminium

9 3/4 x 10 1/4 in | 50 x 26 cm

Framed: 20 1/2 x 11 in | 52 x 28 cm

(YT016)



Yi To

From Birth to the Grave, 2024

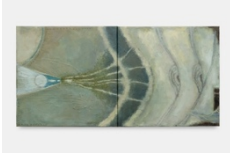
Oil on canvas

48 x 20 1/8 in

122 x 51 cm

(YT015)

ALICE AMATI



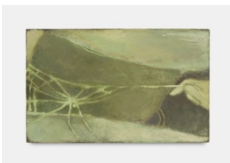
Yi To
Double-Quasar, 2024
Oil on canvas
15 3/4 x 31 1/2 in
40 x 80 cm
(YT014)



Yi To
Origin of Supernatural Probabilities, 2024
Oil on canvas
47 1/4 x 98 3/8 in
120 x 250 cm
(YT012)



Yi To
Four legs good, two legs bad, 2023
TV aerial, silicone, epoxy clay, acrylic, aluminium
wire
39 3/8 x 13 3/4 x 11 3/4 in
100 x 35 x 30 cm
(YT011)



Yi To
Memory Image, 2024
Oil on board
10 3/8 x 16 1/2 in
26.3 x 42 cm
(YT010)