

UNION PACIFIC

Describe to me the view from my window

LIST OF WORKS



Carl Mannov

Architecture (II), 2024

Gesso and acrylic on jute

40 x 23 x 3 cm



Carl Mannov

Architecture (III), 2024

Gesso and acrylic on jute

40 x 23 x 3 cm



Carl Mannov

Architecture (IV), 2024

Gesso and acrylic on jute

40 x 23 x 3 cm



Carl Mannov

Architecture (I), 2024

Gesso and acrylic on jute

43 x 32 x 2.7 cm



Carl Mannov

Brood, 2024

Gesso and acrylic on cotton

40 x 27 x 3 cm



Martin Aagaard Hansen

The wheel of it all, 2024

Gouache, pastel, and tempera on paperboard
mounted on stretcher.

Wooden frame

64,9 x 50 cm

Directors

Grace Schofield

Nigel Dunkley

+44 (0)20 7247 6161

mail@unionpacific.co.uk

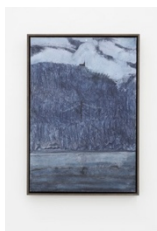
15 West Central Street

London WC1A 1JJ

17 Goulston Street

London E1 7TP

UNION PACIFIC



Martin Aagaard Hansen

Church, moon and crane fly, 2024

Gouache, pastel, and tempera on paperboard
mounted on stretcher.

Wooden frame

46,9 x 32,7 cm



Martin Aagaard Hansen

Wooden dolls, or remnants of people, 2024

Gouache, pastel, and tempera on paperboard
mounted on stretcher.

Wooden frame

39 x 29 cm



Adele Rannes

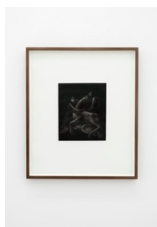
Mountains, 2024

Mezzotint on paper, framed

36 x 40 cm

Measurements with frame: approximately 36 x

40 x 2,5 cm



Adele Rannes

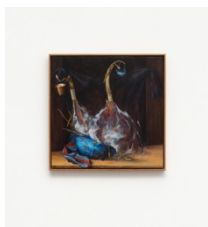
Three Figures, 2024

Mezzotint on paper, framed

37 x 45 cm

Measurement with frame: approximately 45 x 53

x 2,5 cm



Anna Kristine Hvid Peterson

Et landskab vil have sine safter tilbage, 2024

Oil and canvas mounted on wood

72 x 72 x 2.5 cm

Directors

Grace Schofield

Nigel Dunkley

+44 (0)20 7247 6161

mail@unionpacific.co.uk

15 West Central Street

London WC1A 1JJ

17 Goulston Street

London E1 7TP

UNION PACIFIC



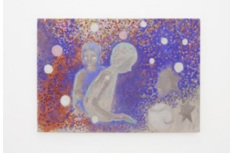
Morten Knudsen

Untitled, 2024

Oil, wax, pencil, foamboard, MDF, plexiglas

24.5 x 29 cm (unframed) 71 x 71 x 6 cm

(framed)

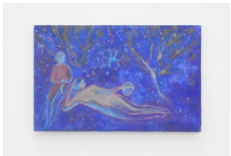


Katrine Bobek

Untitled, 2024

Oil on canvas

84 x 58 cm

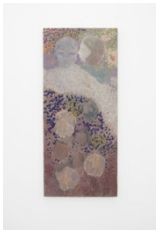


Katrine Bobek

Untitled, 2024

Oil on canvas

38 x 24 cm



Katrine Bobek

Kiss

Oil on canvas

95 x 40 cm

Directors

Grace Schofield

Nigel Dunkley

+44 (0)20 7247 6161

mail@unionpacific.co.uk

15 West Central Street

London WC1A 1JJ

17 Goulston Street

London E1 7TP