

ARCH is pleased to announce the exhibition Sleep Walk by Yu Nishimura (b. Kanagawa 1982).

Depicting universal mental landscapes with personal language, Yu Nishimura infuses his work with animism that echoes both Japanese anime and street photography. There are no defined themes of gender, race, or politics, but the work decants a poetry and passion for the world that ultimately becomes a political act of resistance, a rereading of the universe around us, recounting the aura of everyday life by placing it in an emotional and dreamlike pictorial space.

Yu Nishimura often refers, in his painting practice to the notion of “portrait”, referring to, beyond human portraiture, a quality in various painted situations such as a person walking alone in a forest, animals doing different things, a car speeding away, landscape elements. One of the characteristics of his paintings is that they are constructed with overlaid layers of painterly elements, such as contours of a figure and planes of color, all overlapped with slight misalignment. The image thus becomes fluid and presents afterimage-like effects.

*“The focus of this show is on the surface and background of the works. I would like to select paintings that allow the audience to move between the foreground and background of each individual work as well as the connections between the works. The main context is the juxtaposition of indoor and outdoor spaces, the distance between people, and the intermingling elements of the changing seasons.”* -Yu Nishimura

Yu Nishimura lives and works in Tokyo. In 2004 he graduated from Tama Art University, Oil Painting Course, Department of Fine Arts, Faculty of Art and Design.

Solo & duo shows (selection):

The Sequel: Twin Boat Songs - Verdigris Vessel, two-person show with Kazuaki Takezaki, Echigo-Tsumari, Tōkamachi (JP)(2023); DECEMBER LIGHT, La Società delle Api, Monaco (MC)(2023); State of Stillness, Crèveœur, Paris (FR)(2022); Ebb Tide, Dawid Radziszewski Gallery, Warsaw (PL)(2021); Scene of beholder, Crèveœur, Paris (FR)(2020); Around October, KAYOKOYUKI, Tokyo (JP)(2020); Aperto 09 Nishimura Yu -paragraph, Kanazawa 21st Century Museum, Ishikawa (JP)(2018); portrait, KAYOKOYUKI, Tokyo (JP)(2017); projection, KAYOKOYUKI, Tokyo (JP)(2016); project N 61, Tokyo Opera City Art Gallery, Tokyo (JP)(2015); TWS-Emerging 202 Yu Nishimura:The Senery Carried, TWS Hongo, Tokyo (JP)(2013); Haruhi Painting Triennale: Artist Series Vol.65 Yu Nishimura, Kiyosu City Haruhi Art Museum, Aichi (JP) (2010).

Group shows (selection):

Drop Scene, Chapter NY, New York (US)(2024);“Pictures Girls Make” : Portraits, Blum & Poe, Los Angeles (US)(2023); Open Storage: 25 Years of Collecting, The Warehouse, Dallas (US)(2022); The Prophetic Pictures, Crèveœur, Paris (FR)(2021);L'INCONTRO, curated by Cristiano Raimondi, Le Quai, Monte Carlo (MC)(2021); Twin Boat Songs, duo with Kazuyuki Takezaki, KAYOKOYUKI, Tokyo (JP)(2020); Triple traveler -Tea ceremony, Ikaruga-an, Seikeitei, the Nezu Museum, Tokyo (JP)(2019); Azamino Contemporary vol.9, Yokohama Civic Art Gallery Azamino, Kanagawa (JP)(2018); Shell Art Award Artists Selection, The National Art Center, Tokyo (JP)(2017); Contemporary tales from the province 4 -Susaki artist in residence, Susaki Machikado Gallery, Kochi (JP)(2016); FACE 2014: Sompo Japan Art Award Exhibition, Seiji Togo Memorial Sompo Japan Museum of Art, Tokyo (JP)(2014); Shell Art Award 2013, The National Art Center, Tokyo (JP)(2013); Tokyo Wonder Wall 2012, Museum of Contemporary Art, Tokyo (JP)(2012); YOKOHAMA 2011 Minato-Mirai, Yokohama Civic Art Gallery, Kanagawa (JP)(2011); The 6th Kiyosu City Haruhi Painting Triennale, Kiyosu City Haruhi Art Museum, Aichi (JP)(2009).

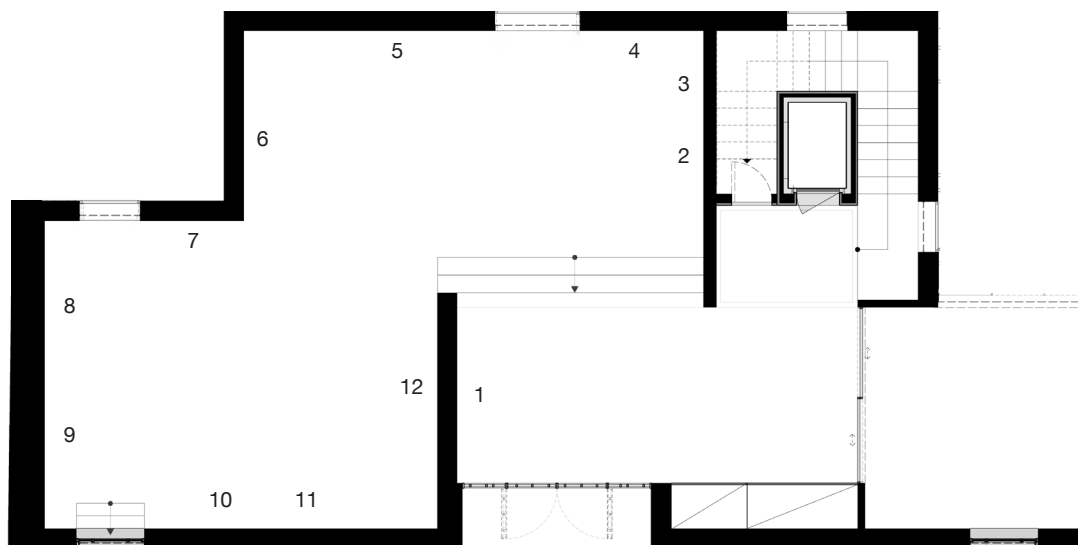
Awards: Grand Prize, Koji Kinutani Prize 2017, Excellent Work Award, FACE 2014:Sompo Japan Art Award Exhibition, July Incentive Award -Kenjiro Hosaka, Shell Art Award 2013, Best Prize, The 6th Kiyosu City Haruhi Painting Triennale 2009

Selected collections: Musée d'Art Moderne de Paris, AMOCA Wales - Artistic Museum of Contemporary Art, Kanazawa 21st Century Museum ,Kiyosu City Haruhi Art Museum / Aichi, MWood's Museum, Taguchi Art Collection

Exhibition on view until September 19th, 2024

Hours of operation: Tuesday – Saturday (11 AM – PM) or by appointment

Admission is free.



1. *Isotope, 2024*

*Oil on canvas*

*91 x 116,7cm*

2. *Camellia, 2024*

*Oil on canvas*

*33,4 x 24,3cm*

3. *After snow, 2024*

*Oil on canvas*

*33,4 x 24,3cm*

4. *Ocean at night, 2022*

*Oil on canvas*

*33,3 x 24,2cm*

5. *Lost in the sound of waves, 2024*

*Oil on canvas*

*181,8 x 227,3cm*

6. *Spring far behind, 2024*

*Oil on canvas*

*162 x 227,3cm*

7. *A cat looking, 2024*

*Oil on canvas*

*27,3 x 27,3cm*

8. *Ceramics, 2024*

*Oil on canvas*

*22,8 x 15,7cm*

9. *Lotus, 2024*

*Oil on canvas*

*112 x 145,5*

10. *A corner of the studio, 2022*

*Tempera on linen*

*100 x 80,3cm*

11. *Cough, 2022*

*Tempera on linen*

*22 x 27,3cm*

12. *Synchronicity, 2024*

*Oil on canvas*

*181,8 x 227,3cm*