



Adams and Ollman

Rob Lyon: *Also Votes*
June 1–July 13, 2024

For inquiries:

Amy Adams
amy@adamsandollman.com
+1 215 426 4244

Marie Catalano
marie@adamsandollman.com
+1 845 416 8499

Andrea Glaser
aglaser@adamsandollman.com
+1 503 569 4050

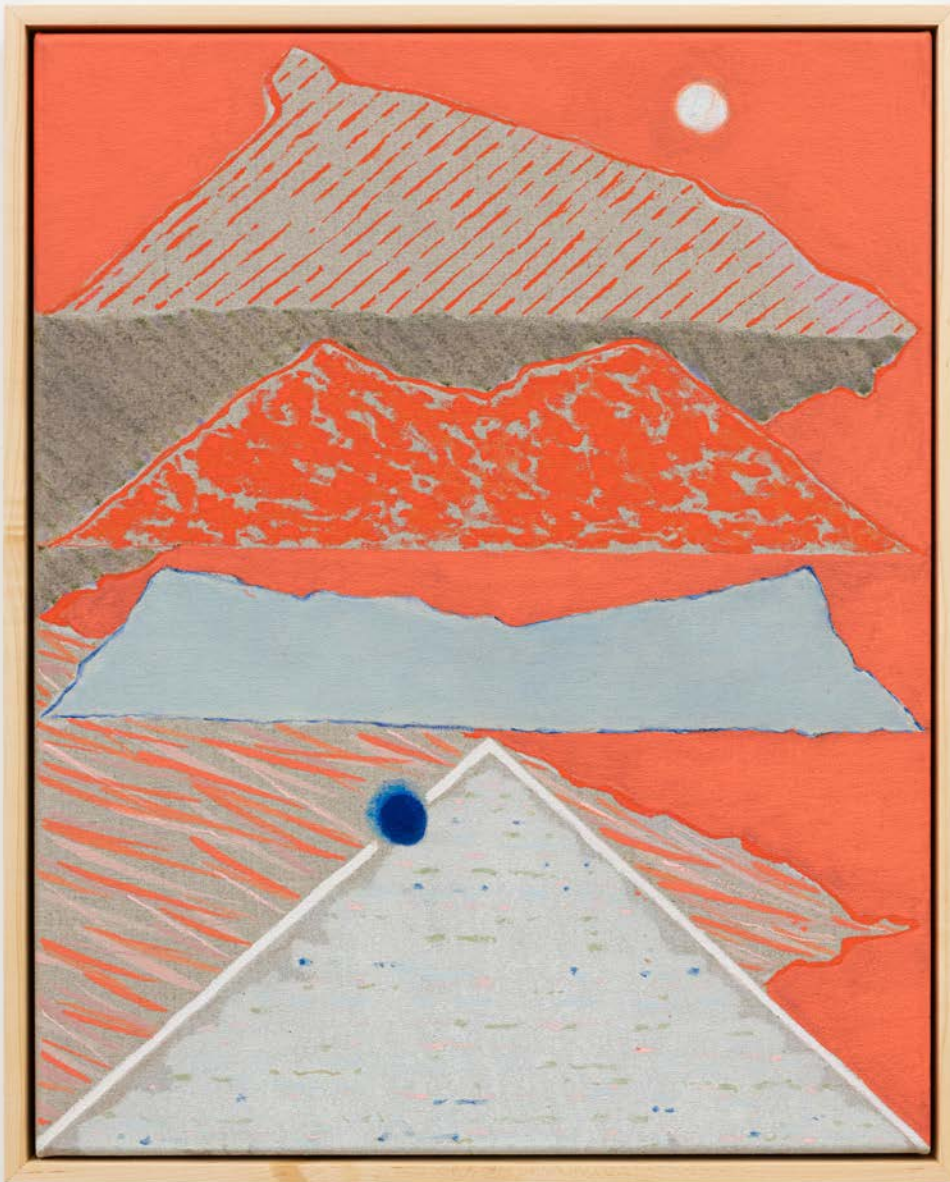
Adams and Ollman is pleased to announce *Also Votives*, a solo exhibition by British painter Rob Lyon, his second with the gallery. On view in the exhibition will be a series of new paintings that explore the landscape as a site of spiritual communion and transformation. Included in the show is a group of works on paper, marking the first time Lyon's drawings have been on view. *Also Votives* is accompanied by a zine made with the artist. The exhibition opens on Saturday, June 1 and is on view through July 13, 2024.

The starting point of Lyon's work to date has been the South Downs, a range of chalk hills in the South Eastern coastal counties of England, where the artist was raised and later returned with his family to live and work. Inspired by this landscape long shaped by eons of geologic forces and more recently by the vicissitudes of human intervention, Lyon uses bold, simplified brushwork and patterning to conjure its unique spirits, which he then uses as a gateway to transcend the logic and limitations of the physical world in pursuit of spiritual or metaphysical connection.

In this exhibition, Lyon builds upon a theme explored in recent works that posited the notion that the landscape is an architecture comprised of "portals". A portal, the artist posits, is formed of natural phenomena that, when engaged by us, results in a reverberation that consecrates the specific place with spiritual potency. This potency invites and enables our communion with whatever we desire to commune with. *Also Votives* develops this theme through an exploration of the "false portal"; a blind entrance purposefully built into neolithic burial mounds located throughout the British landscape. Such "dummy doorways" are believed to have been included to permit the passage of ancestral spirits and as a place for living descendants to deposit votives. For Lyon, this portal becomes a symbolic threshold, or charged place, between in and out, above and below, ordinary and sacred, known and unknown. Said Lyon, "I struggle with the premise that we, the living, are denied the porosity of landscape afforded to our ascendants, and that we may only offer votives. These paintings and drawings refute this, depicting a network of 'true' and 'false' portals that, combined, permit free passage to the dead *and* living."

Lyon's new works stitch together a quilt-like map of experience. Graphic, elemental forms in a palette of terracotta orange and cerulean blues are pushed to the front of the picture plane to be read or deciphered like a map. Lyon's triangles denote a sacred place, activated by our presence. A meandering white line shows us a well-worn path. Two glowing celestial bodies—one dark and the other light—coexist in many of the works, compressing time and space and giving form to the presence of both true and false portals. The titles of the works provide wayfinding for the viewer: *Cospe*, a small stand of trees; *Mont*, a mountain; or *Precaction*, a prayer or request. We are not looking at a snapshot of time, but a longer exposure, permitting us unencumbered and enduring passage.

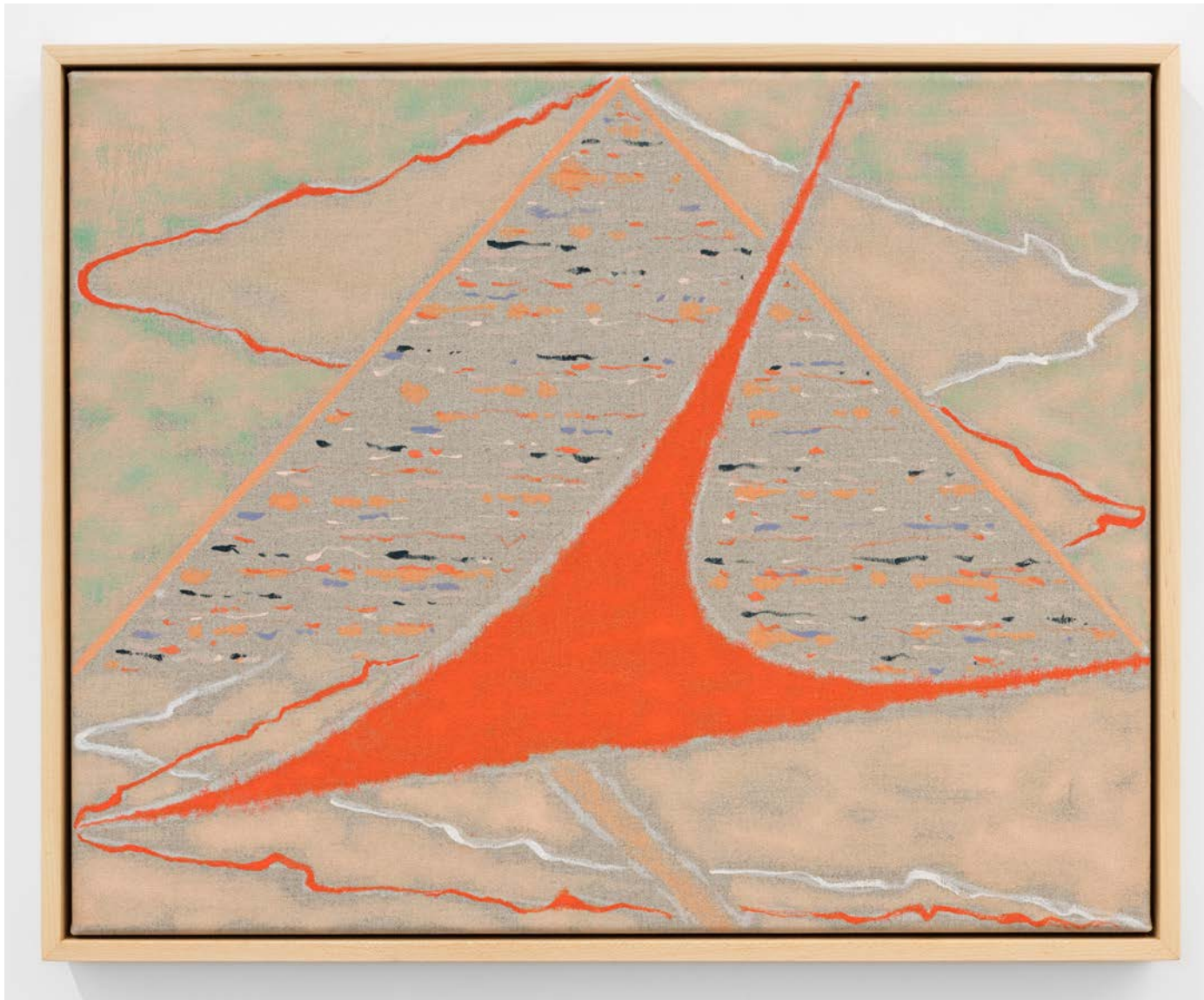
Rob Lyon (b. 1982 Lancashire, UK; lives and works in Sussex, UK) holds a Bachelor of Science in Chemistry and Law from Bristol University, UK. His work has been included in exhibitions at Hales Gallery, London, UK, Warwick Arts Center, Coventry, UK; Alzueta Gallery, Barcelona, ES; Adams and Ollman, Portland, OR; Wondering People, London, UK; Gallery 94, Glyndebourne, UK; Blakefest 2020 and 2017, Bognor Regis, UK; the Warbling Collective, London, UK.



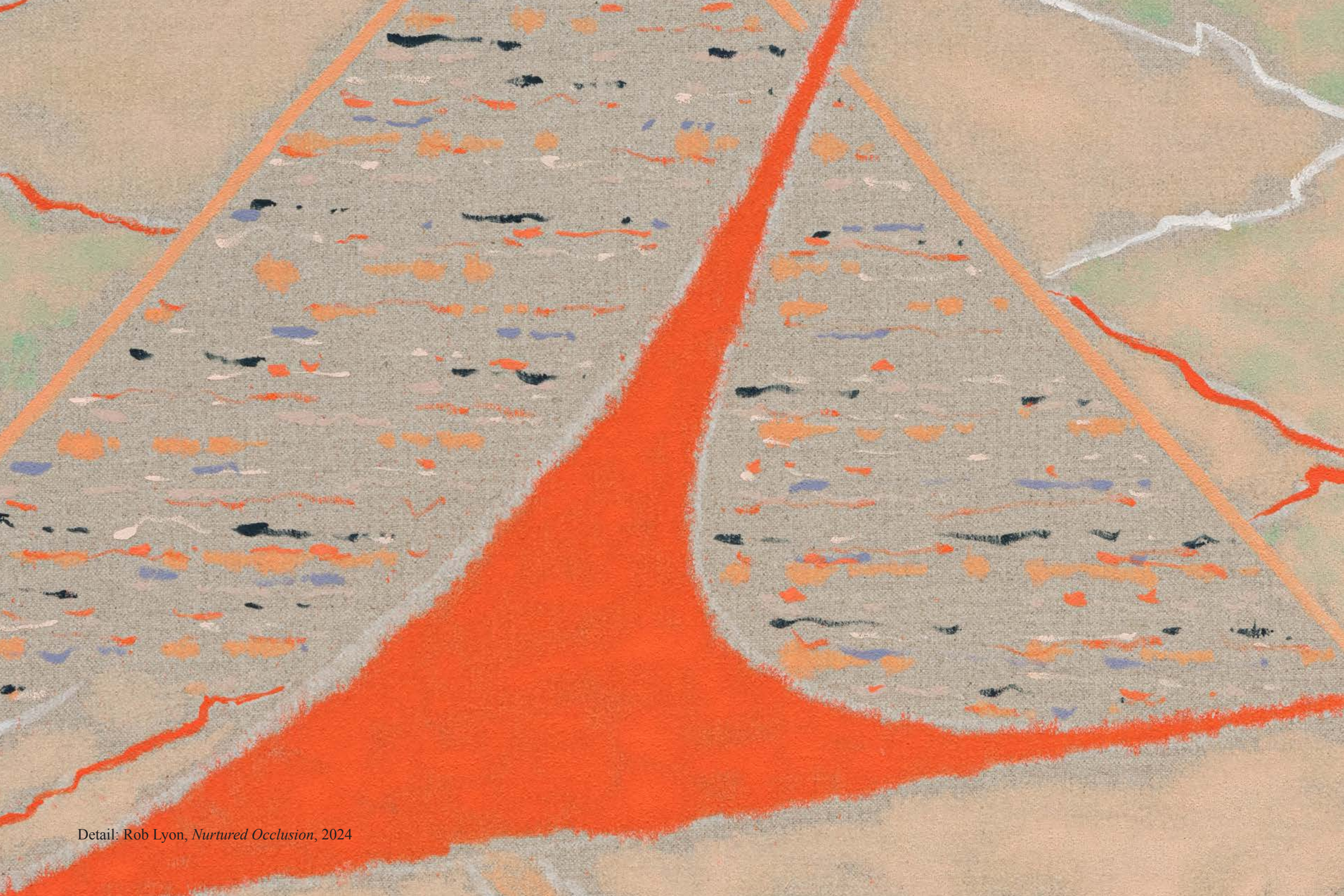
Rob Lyon
Circular Walk, 2024
oil on linen
19 11/16h x 15 3/4w in
50.01h x 40.01w cm
RL2024001



Detail: Rob Lyon, *Circular Walk*, 2024



Rob Lyon
Nurtured Occlusion, 2024
oil on linen
15 3/4h x 19 11/16w in
40.01h x 50.01w cm
RL2024009



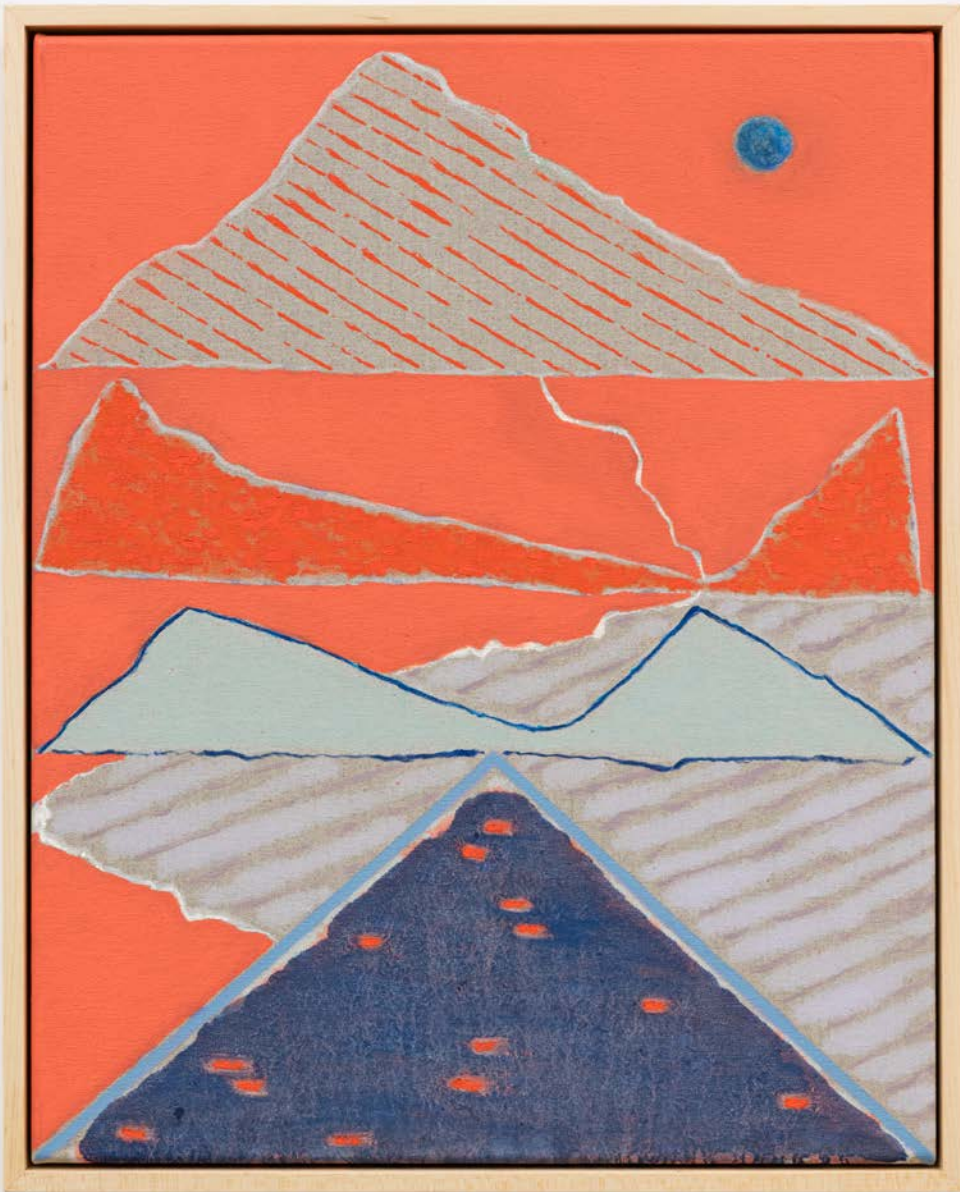
Detail: Rob Lyon, *Nurtured Occlusion*, 2024



Rob Lyon
Birthday, 2024
oil and marble dust on linen
15 3/4h x 25 5/8w in
40.01h x 65.09w cm
RL2024010



Detail: Rob Lyon, *Birthday*, 2024



Rob Lyon
Wiltshire, 2024
oil on linen
19 11/16h x 15 3/4w in
50.01h x 40.01w cm
RL2024005



Detail: Rob Lyon, *Wiltshire*, 2024



Rob Lyon
Precation, 2024
oil on linen
19 11/16h x 15 3/4w in
50.01h x 40.01w cm
RL2024008



Detail: Rob Lyon, *Precation*, 2024



Rob Lyon
Gabriel, 2024
oil on linen
31 1/2h x 26 3/4w in
80.01h x 67.95w cm
RL2024002



Detail: Rob Lyon, *Gabriel*, 2024



Rob Lyon
Fort, 2024
oil on linen
31 1/2h x 26 3/4w in
80.01h x 67.95w cm
RL2024003



Detail: Rob Lyon, *Fort*, 2024



Rob Lyon
Brel, 2024
oil on linen
31 1/2h x 26 3/4w in
80.01h x 67.95w cm
RL2024007



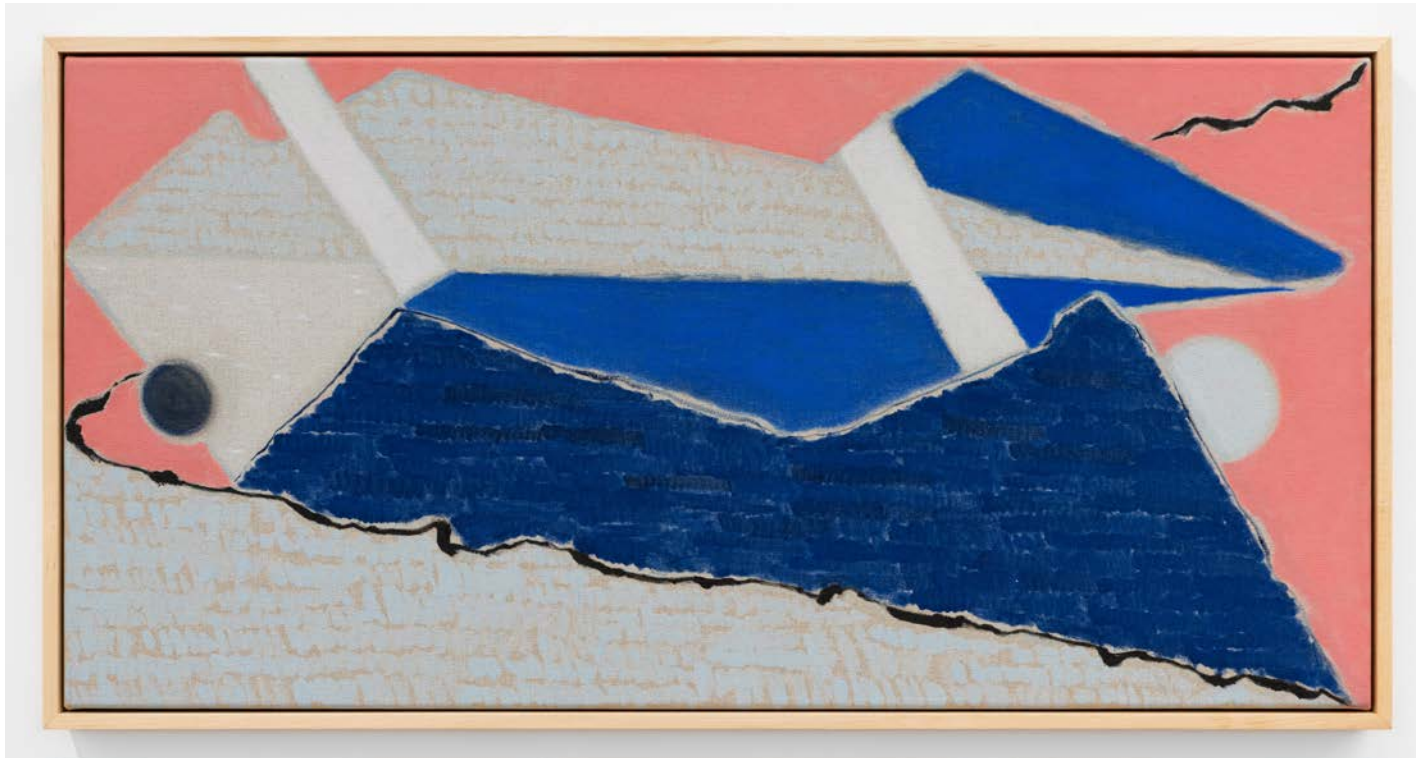
Detail: *Robert Rauschenberg*, *Brel*, 2024



Rob Lyon
False Island, 2024
oil on linen
11 13/16h x 15 3/4w in
30h x 40.01w cm
RL2024004



Detail: Rob Lyon, *False Island*, 2024



Rob Lyon
Chamber, 2024
oil on linen
15 3/4h x 31 1/2w in
40.01h x 80.01w cm
RL2024006



Detail: Rob Lyon, *Chamber*, 2024



Rob Lyon
Mont, 2024
oil on panel
8 3/8h x 7 1/2w in
21.27h x 19.05w cm
RL2024011



Detail: Rob Lyon, *Mont*, 2024



Rob Lyon
Night Sauce, 2023
oil on panel
7 1/2h x 9w in
19.05h x 22.86w cm
RL2023044



Detail: Rob Lyon, *Night Sauce*, 2023



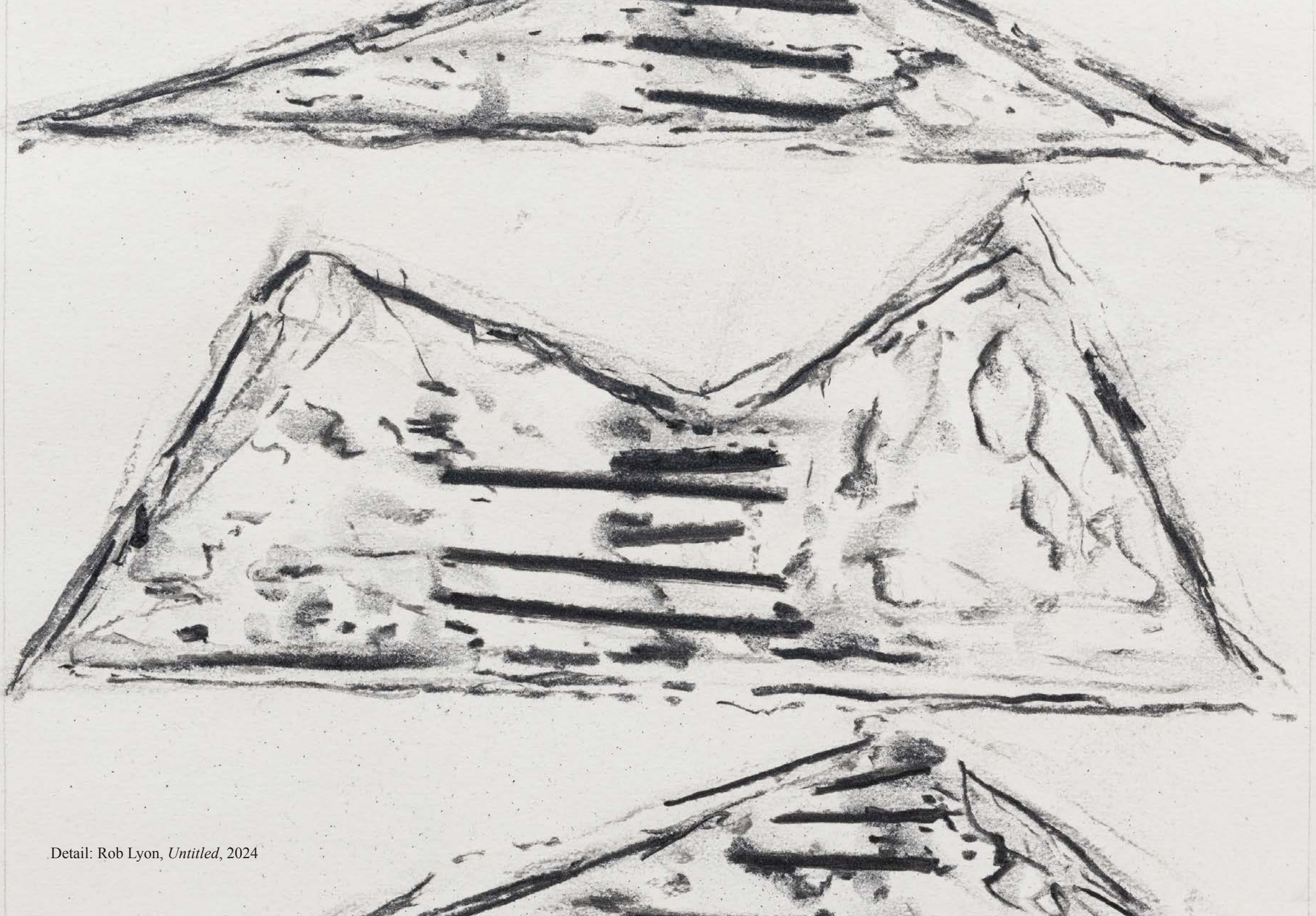
Rob Lyon
Copse, 2024
oil on panel
7 7/16h x 8 3/8w in
18.89h x 21.27w cm
RL2023045



Detail: Rob Lyon, *Copse*, 2024



Rob Lyon
Untitled, 2024
charcoal on paper
20h x 15 1/4w in
50.8h x 38.74w cm
RL_DR_2024_001



Detail: Rob Lyon, *Untitled*, 2024



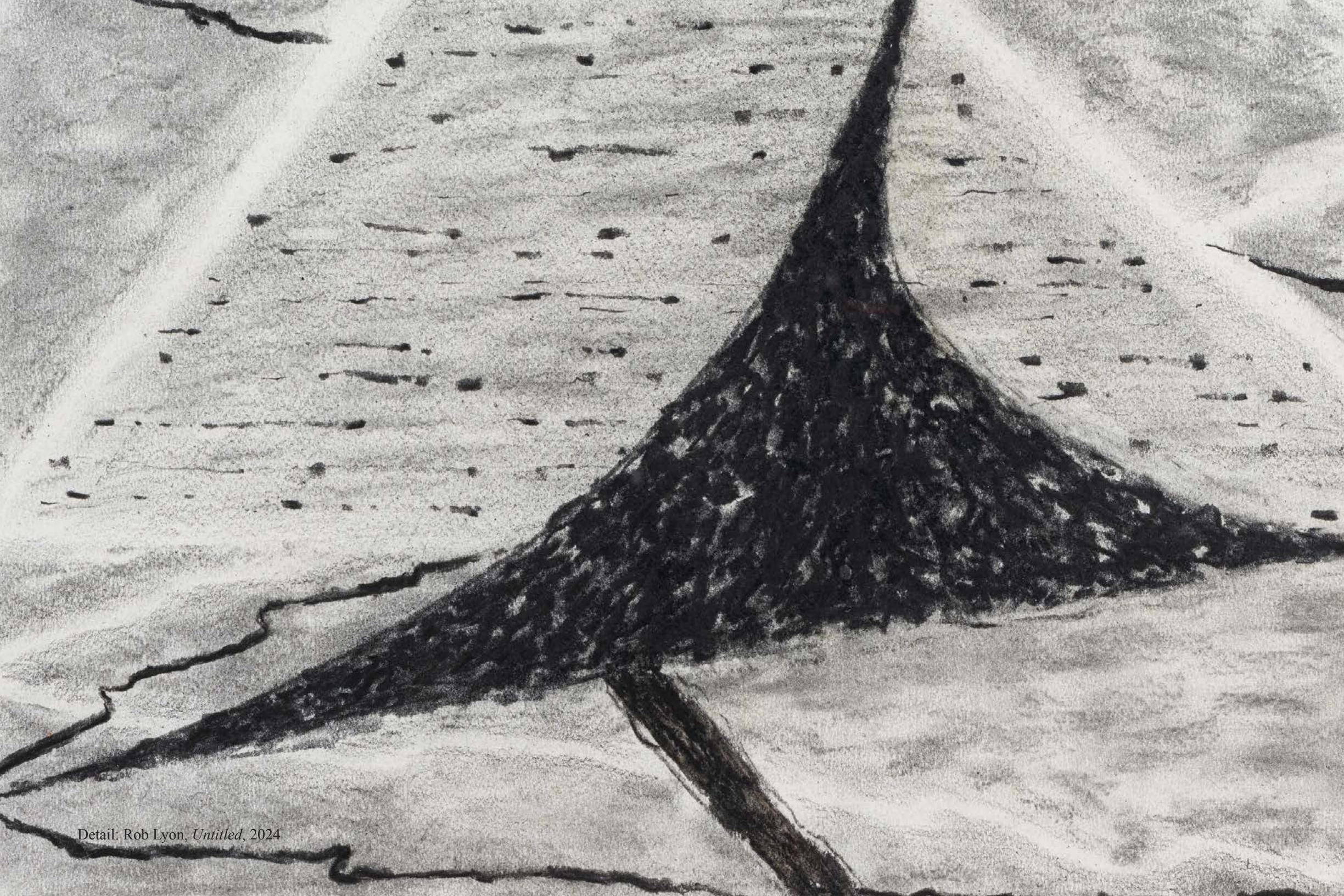
Rob Lyon
Untitled, 2024
charcoal on paper
15 1/4h x 20w in
38.74h x 50.8w cm
RL_DR_2024_003



Detail: Rob Lyon, *Untitled*, 2024



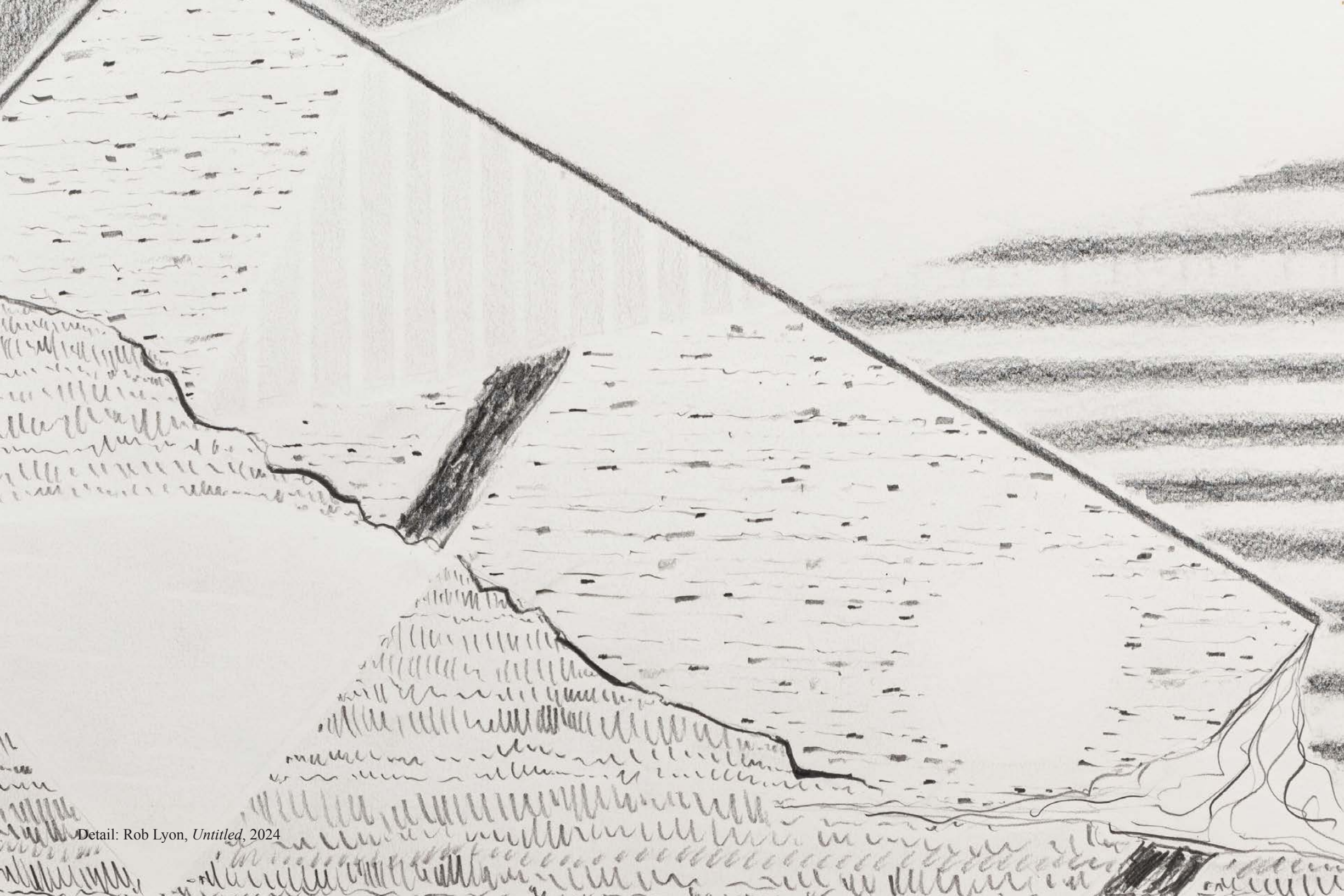
Rob Lyon
Untitled, 2024
charcoal on paper
15h x 18.5w in
38h x 15w cm
RL_DR_2024_006



Detail: Rob Lyon, *Untitled*, 2024



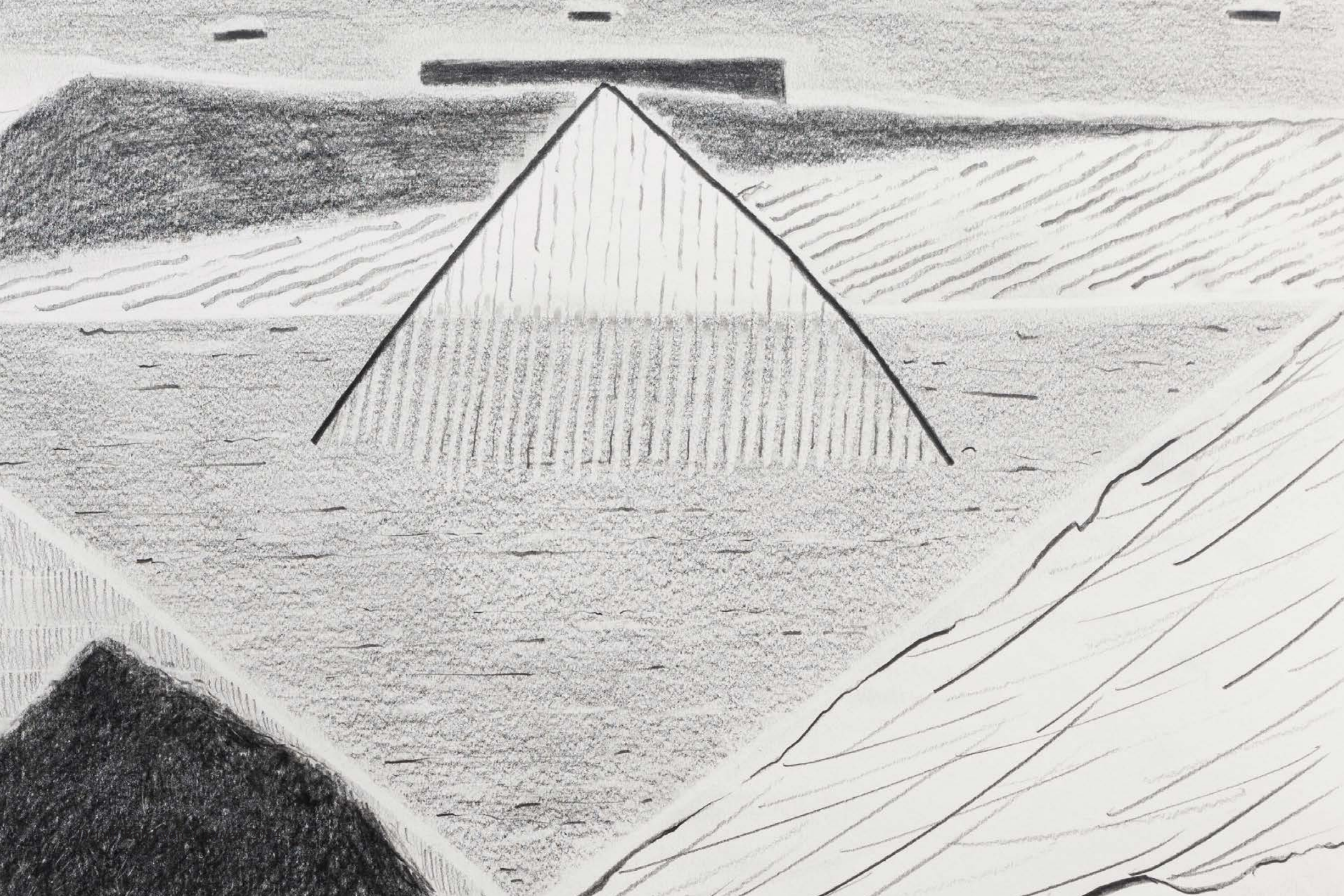
Rob Lyon
Untitled, 2024
graphite on paper
15 1/4h x 20w in
38.74h x 50.8w cm
RL_DR_2024_005



Detail: Rob Lyon, *Untitled*, 2024



Rob Lyon
Untitled, 2024
graphite on paper
15 1/4h x 20w in
38.74h x 50.8w cm
RL_DR_2024_002



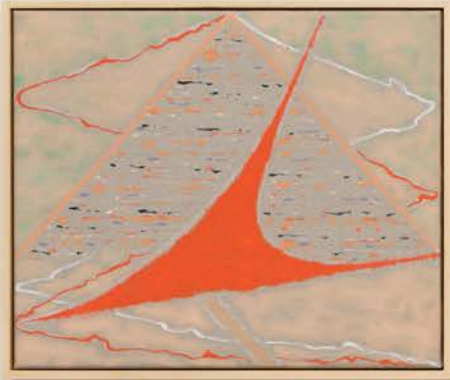


Rob Lyon
Untitled, 2024
graphite on paper
15 1/4h x 20w in
38.74h x 50.8w cm
RL_DR_2024_004



Detail: Rob Lyon, *Untitled*, 2024





Installation view: Rob Lyon, *Also Votives*, 2024



Installation view: Rob Lyon, *Also Votives*, 2024



Installation view: Rob Lyon, *Also Votives*, 2024



Installation view: Rob Lyon, *Also Votives*, 2024



Installation view: Rob Lyon, *Also Votives*, 2024



Installation view: Rob Lyon, *Also Votives*, 2024



Installation view: Rob Lyon, *Also Votives*, 2024



Installation view: Rob Lyon, *Also Votives*, 2024



Installation view: Rob Lyon, *Also Votives*, 2024



Installation view: Rob Lyon, *Also Votives*, 2024



Installation view: Rob Lyon, *Also Votives*, 2024



Installation view: Rob Lyon, *Also Votives*, 2024



Installation view: Rob Lyon, *Also Votives*, 2024

Installation view: Rob Lyon, *Also Votives*, 2024

Adams and Ollman 418 NW 8th Avenue, Portland, Oregon 97209 +



Installation view: Rob Lyon, *Also Votives*, 2024

Adams and Ollman 418 NW 8th Avenue, Portland, Oregon 97209 +

