

ALTMAN SIEGEL

1150 25TH ST. SAN FRANCISCO, CA 94107

tel: 415.576.9300 / fax: 415.373.4471

www.altmansiegel.com

Adaline Kent's Circle
May 30 – July 13, 2024

Gallery 2



Imogen Cunningham

Sculpture by Robert Howard, n.d.

Photograph

9 1/4 x 7 1/2 in

23.5 x 19.1 cm

Matted: 18 x 14 in

45.7 x 35.6 cm

Framed: 19 1/4 x 15 1/4 in

48.9 x 38.7 cm

(M-PH-01)



Diego Rivera

Untitled, n.d.

Ink on paper

5 x 12 1/4 in

12.7 x 31.1 cm

Matted: 13 x 18 in

33 x 45.7 cm

Framed: 12 x 19 1/4 in

30.5 x 48.9 cm

(M-D-01)



Ansel Adams

Photo of Robert B. Howard, 1938

Photograph

7 5/8 x 6 1/2 in

19.4 x 16.5 cm

Matted: 12 3/4 x 9 1/4 in

32.4 x 23.5 cm

Framed: 15 x 12 in

38.1 x 30.5 cm

(M-PH38-01)



Dorr Bothwell

Untitled, 1950

Ink on paper

10 1/2 x 8 1/4 in

26.7 x 21 cm

(M-D50-02)

ALTMAN SIEGEL

1150 25TH ST. SAN FRANCISCO, CA 94107

tel: 415.576.9300 / fax: 415.373.4471

www.altmansiegel.com



Adaline Kent

Travel Journal: Rome, Greece, Egypt, 1954

Notebook

6.5 x 4 5/8 x 1 in

(AK-E-05)



Robert B. Howard

Photo of Adaline Kent hiking in the Sierras, c. 1930

Silver gelatin print

5 x 3.5 in

(RBH-E-02)



Robert B. Howard

Photo of Adaline Kent hiking in the Sierras, c. 1930

Silver gelatin print

5 x 3.5 in

(RBH-E-03)



Gordon Onslow Ford

Invitation sent to Adaline Kent, 1956

Ink on paper

11 x 27 in

27.9 x 68.6 cm

(M-PR56-01)



Ray Johnson

Untitled, 1955

Ink on paper

10 1/2 x 7 1/2 in

26.7 x 19.1 cm

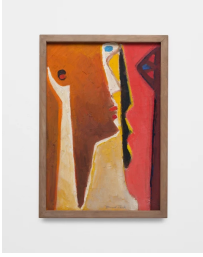
(M-PR55-02)

ALTMAN SIEGEL

1150 25TH ST. SAN FRANCISCO, CA 94107

tel: 415.576.9300 / fax: 415.373.4471

www.altmansiegel.com



David Park

Two Profiles, 1946-47

Oil on canvas

18 1/2 x 12 1/2 in

47 x 31.8 cm

Framed: 19 1/2 x 13 1/2 in

49.5 x 34.3 cm

(M-P46-02)



Elmer Bischoff

collection in Yellow Setting, 1946

Oil on canvas

21 1/2 x 14 in

54.6 x 35.6 cm

Framed: 23 1/4 x 16 in

59 x 40.6 cm

(M-P46-03)



Ruth Asawa

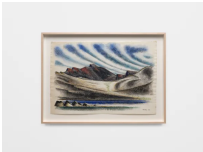
Untitled (Hanging Six Interlocked Double Trumpets), c. 1960

Brass wire (looped wire)

Diameter: 12 in

30.5 cm

(M-S60-01)



Robert B. Howard

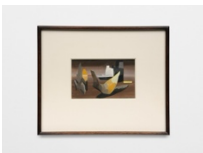
Muir Pass, 1939-44

Watercolor, gouache, and charcoal on paper

15 1/2 x 22 1/2 in

39.4 x 57.1 cm

(RBH-D39-01)



Madge Knight

Untitled, 1948

Gouache on paper

4 1/2 x 6 1/2 in

11.4 x 16.5 cm

Framed: 11 1/4 x 13 1/2 in

28.6 x 34.3 cm

(MK-P48-01)

ALTMAN SIEGEL

1150 25TH ST. SAN FRANCISCO, CA 94107

tel: 415.576.9300 / fax: 415.373.4471

www.altmansiegel.com



John Langley Howard

Untitled, 1931
Oil on canvas
Framed: 24 x 18 in
61 x 45.7 cm
(JLH-P31-02)



David Park

Reclining Figure, c. 1955-59
Ink on paper
13 7/8 x 16 7/8 in
35.2 x 42.9 cm
Framed: 22 1/2 x 25 1/4 in
57.1 x 64.1 cm
(M-D55-05)



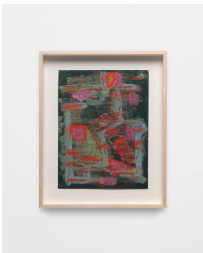
Elmer Bischoff

Reclining Nude with Upraised Arms, 1963
Signature and date lower left: Elmer Bischoff '63
Ink on paper
17 3/4 x 14 3/4 in
45.1 x 37.5 cm
Framed: 26 1/4 x 23 1/2 in
66.7 x 59.7 cm
(M-D63-01)



Jane Berlandina

Untitled, 1930
Watercolor on paper
Framed: 35 x 27 in
88.9 x 68.6 cm
(M-D30-02)



Betty Parsons

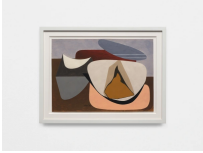
Marin, 1956
Acrylic and graphite on paper
11 7/8 x 9 in
30.2 x 22.9 cm
Framed: 15 1/2 x 12 1/2 in
39.4 x 31.8 cm
(M-D56-02)

ALTMAN SIEGEL

1150 25TH ST. SAN FRANCISCO, CA 94107

tel: 415.576.9300 / fax: 415.373.4471

www.altmansiegel.com



Charles Houghton Howard

#39 Sketch for an Abstract Painting, 1936

Gouache on paper

9 1/8 x 12 7/8 in

23.2 x 32.7 cm

Framed: 12 3/8 x 16 1/8 in

31.4 x 41 cm

(CHH-D36-07)



Victor Arnautoff

Drawing of Adaline Kent, n.d.

Graphite on paper

11 1/2 x 18 1/2 in

29.2 x 47 cm

Framed: 24 1/2 x 18 in

62.2 x 45.7 cm

(M-D-02)