



10 May – 22 June 2024  
54 White Street, New York, NY (US)

*Corso*  
**Francesca Mollett**

GRIMM

# Francesca Mollett

## Corso

10 May - 22 June 2024

GRIMM, 54 White Street, New York, NY (US)

**GRIMM is pleased to present *Corso*, a solo exhibition of new works by London-based artist Francesca Mollett, on view at the New York gallery from 10 May to 22 June 2024. This is the artist's second exhibition with GRIMM since joining the gallery in 2022 and her debut solo exhibition in New York. A new publication with an essay by Bryony Bodimeade will be published to accompany the exhibition.**

Mollett's recent work is an exploration of the permeability of the painted image; the nature of her abstraction is porous, whereby representation of her subject seeps through membranous surfaces. Each canvas appears in flux, like a chemical reaction still unfolding, with the underlying image itself variously willed into or out of reach.

Language, textual and visual, is fundamental to decoding Mollett's surfaces. The exhibition's title *Corso* hints at the multiplicity of overlapping concepts with which the artist engages. With much of the work on view gathered from recent residencies - including one in 2023 in Turin, Italy - the title *Corso* is taken from the Italian word that can mean either 'street' or 'stream,' highlighting the intertwining of the architectural and natural. The artist arrived in Turin not long after a flood caused sections of the river Po to overflow its banks. The often overlooked minutiae of the town were thrown into sharp relief, as tree roots, cracks in the road, fluorescent fencing and peeling barks were cast in new, reflective detail. Following her time in Italy, Mollett was later in residence in Cortachy, Scotland, looking at iridescence and lichens.

Exploring the connections and disparities in each environment led to an openness when translating her observations back in her London studio, as time and space became compressed and reintegrated in her layered, painterly forms.

Phrases such as 'in corso,' however, can also mean 'in progress,' 'happening' or 'current,' denoting the passage of time and finding parallels in the movement and vitality of Mollett's handling of paint, a feeling that there is growth and change occurring as her images unfold. This sensation of growth in an organic or biological sense, too, is vital to this body of work.

Though derived from multiple, often literal sources - the observation of a landscape, city, insect or plant - the act of painting gives life to new forms that are generative, reproducing like spores and formed by (the movement of) color. A description or translation discovered in one painting engenders another painting. These are images constantly in pursuit of further forms to grow, stretch, record and bear witness.

This necessarily then implies experience as embodied. For both artist and viewer, there is a process of destabilising and re-situating or reconstituting a sense of place and time. Mollett's work is a consideration of space through slow looking, slow feeling, of scrutinising an environment not at a distance but as a personal relationship. To view these works is to view the act of interpreting memory as recalled over a period of months, the storing and revisiting of space in the mind's eye, making explicit the pliability and fallibility of perception. The nature of painting space and time, as with the nature of perceiving it first hand, is ultimately elusive and fragile.

## About the artist

Francesca Mollett (b. 1991, Bristol, UK) received her MA in Painting from the Royal College of Art, London (UK) in 2020, having previously studied at the Royal Drawing School and Wimbledon College of Art, London (UK). Recent solo exhibitions include *Noon* at Pond Society, Shanghai (CN); *Halves* at GRIMM, Amsterdam (NL) and *Low Sun* at Micki Meng, San Francisco, CA (US), 2023; *The Moth in the Moss* at Taymour Grahne Projects, London (UK), 2022; *Spiral Walking* at Baert Gallery, Los Angeles, CA (US), 2022 and *Wild Shade* at Informality Gallery, London (UK), 2021. She was included in the group exhibition *The Kingfisher's Wing*, curated by Tom Morton at GRIMM, New York, NY (US), 2022.



Francesca Mollett in her studio, London (UK), 2024 | Photo by Hannah Burton

Her work has also been featured in numerous group shows including *Sympathetic Magic*, Ginny on Frederick (UK), *Present Tense*, Hauser and Wirth, Somerset (UK), *New British Abstraction*, CICA, Vancouver (CA), *Considering Female Abstractions*, Green Family Art Foundation, Dallas, TX (US), 2023; *Sabrina*, curated by Russell Tovey, Sim Smith, London (UK); *New Romantics*, The Artist Room at Lee Eugene Gallery, Seoul (KR); *Down in Albion* at L.U.P.O. Lorenzelli Projects, Milan, (IT) in 2022; *Le coeur encore*, The approach, London (UK), 2021; *Diaries of a Climate*, Baert Gallery, Los Angeles, CA (US), 2021; and *London Grads Now*, Saatchi Gallery, London (UK), 2020.

Mollett's work can be found in the Green Family Art Foundation, Dallas, TX (US); He Art Museum, Foshan (CN); Institute of Contemporary Art, Miami, FL (US); Kröller Müller Museum, Otterlo (NL); K11 Art Foundation, Hong Kong (HK); Kunstmuseum, The Hague (NL); Pond Society, Shanghai (CN); the Rachofsky Collection, Dallas, TX (US); the David and Indre Roberts Collection, London (UK); Sainsbury Centre, Norwich (UK) and The University of Oxford, St Hilda's College Art Collection, Oxford (UK).

All press inquiries  
[press@grimmgallery.com](mailto:press@grimmgallery.com)

For all sales inquiries contact  
[enquiry@grimmgallery.com](mailto:enquiry@grimmgallery.com)

**GRIMM**



*Spindle*  
2024

Oil on linen  
250 x 180 cm | 98 3/8 x 70 7/8 in

**GRIMM**



*Riffle*  
2023

Oil on linen  
80 x 60 cm | 31 1/2 x 23 5/8 in

**GRIMM**





*Frost cracks*  
2023-2024

Oil on linen  
180 x 140 cm | 70 7/8 x 55 1/8 in

GRIMM

Installation view | *Corso* | GRIMM, New York, NY (US), 2024







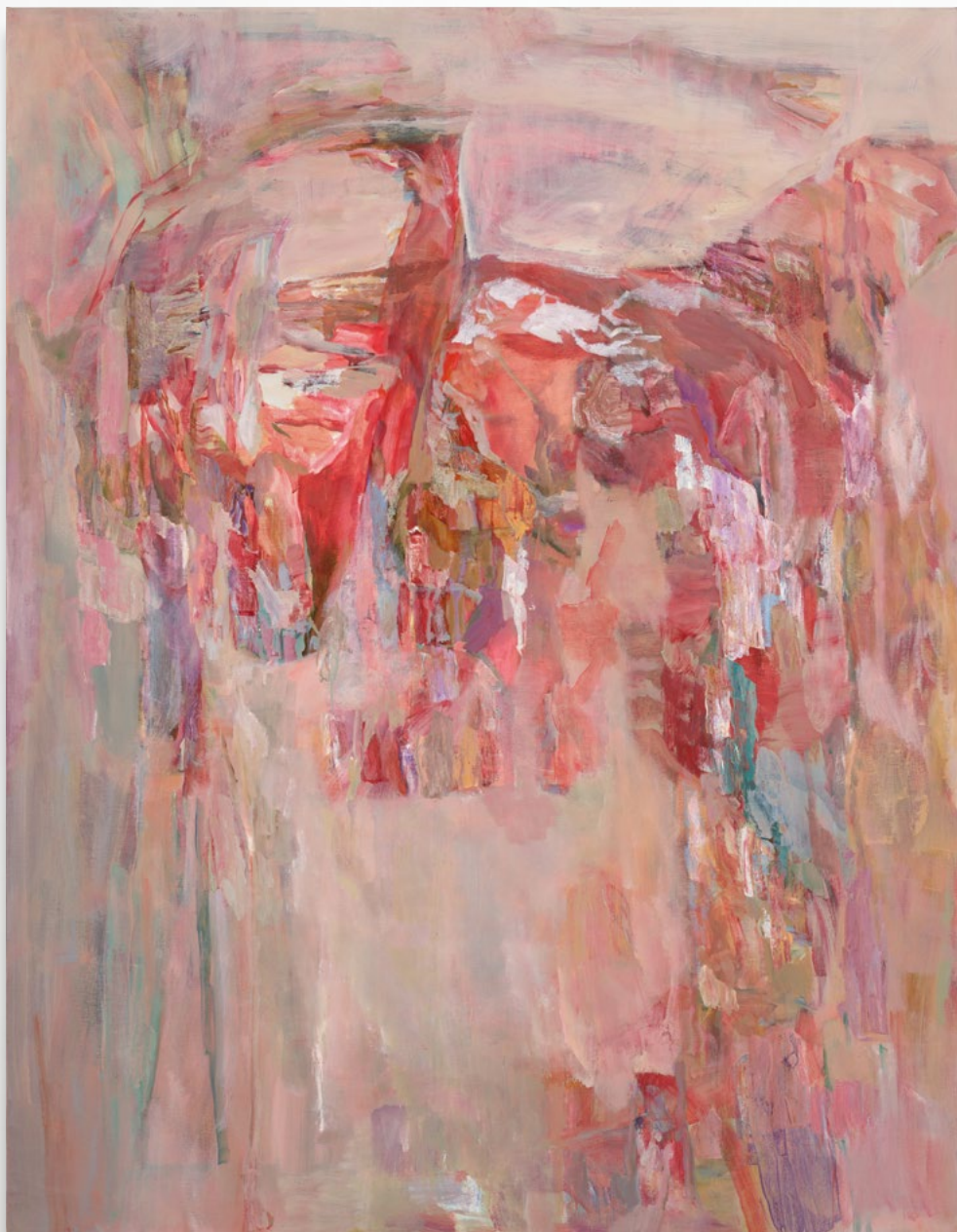
*Three*  
2024

Oil on linen  
40 x 50 cm | 15 3/4 x 19 3/4 in

**GRIMM**

Detail | *Three*, 2024





*Murmur*  
2023

Oil on linen  
180 x 140 cm | 70 7/8 x 55 1/8 in

**GRIMM**



***Cortex***  
2024

Oil on linen  
180 x 230 cm | 70 7/8 x 90 1/2 in

**GRIMM**





*Divining*  
2024

Oil on linen  
170 x 220 cm | 66 7/8 x 86 5/8 in

GRIMM





***Gathersno***  
2024

Oil on linen, diptych  
210 x 360 cm | 82 5/8 x 141 3/4 in (total)

**GRIMM**



Installation view | *Corso* | GRIMM, New York, NY (US), 2024





*One nor other*  
2024

Oil on linen  
230 x 180 cm | 90 1/2 x 70 7/8 in

GRIMM



*Ravel*  
2023

Oil on linen  
230 x 180 cm | 90 1/2 x 70 7/8 in

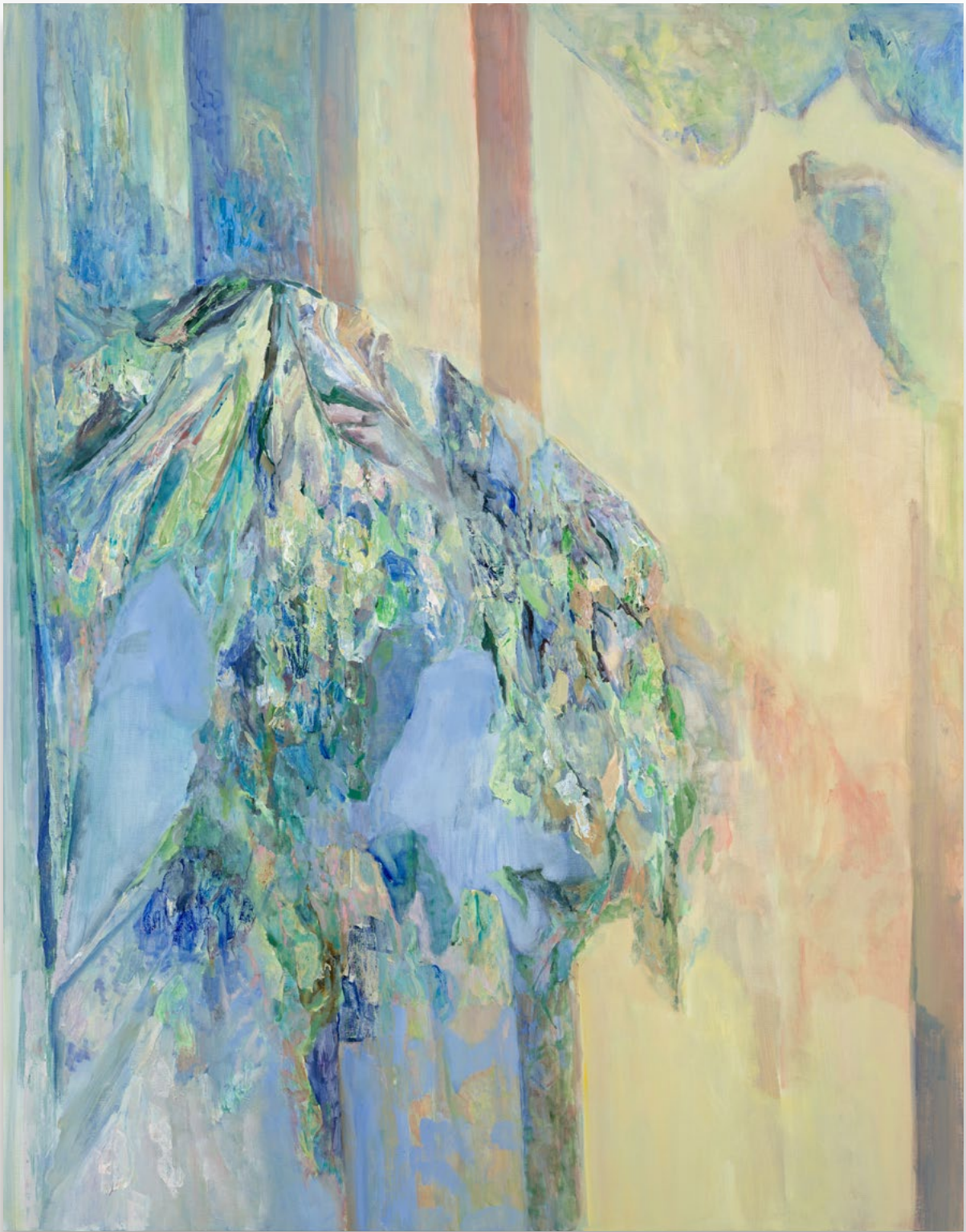
**GRIMM**



*Scintilla*  
2024

Oil on linen  
40 x 50 cm | 15 3/4 x 19 3/4 in

**GRIMM**



***Bonding***  
2024

Oil on linen  
230 x 180 cm | 90 1/2 x 70 7/8 in

**GRIMM**



*Nymph of the hinge*  
2023-2024

Oil on linen  
230 x 180 cm | 90 1/2 x 70 7/8 in

GRIMM



*Verge*  
2024

Oil on linen  
220 x 170 cm | 86 5/8 x 66 7/8 in

**GRIMM**

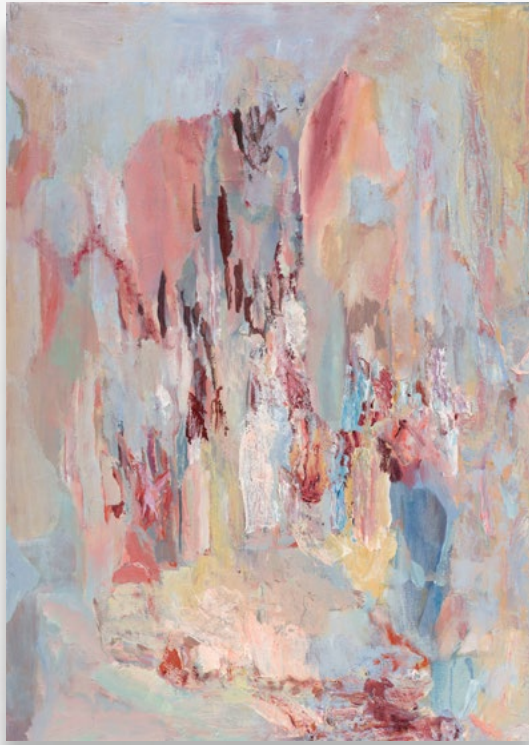


*Tap*  
2023-2024

Oil on linen  
40 x 50 cm | 15 3/4 x 19 3/4 in

**GRIMM**





*Catch*  
2023-2024

Oil on linen  
70 x 50 cm | 27 1/2 x 19 3/4 in

GRIMM



***Swept***  
2023-2024

Oil on linen  
45 x 60 cm | 17 3/4 x 23 5/8 in

**GRIMM**



**Team**  
2024

Oil on linen  
80 x 60 cm | 31 1/2 x 23 5/8 in

**GRIMM**



# Francesca Mollett

b. 1991, Bristol (UK)

Lives and works in London (UK)

## EDUCATION

- 2020 Royal College of Art, London (UK)
- 2015 Royal Drawing School, London (UK)
- 2014 Wimbledon College of Arts, London (UK)

## AWARDS

- 2020 Aidan Threlfall Award

## SELECTED SOLO EXHIBITIONS

- 2024 *Corso*, GRIMM, New York, NY (US)
- 2023 *Noon*, Pond Society, Shanghai (CN)  
*Halves*, GRIMM, Amsterdam (NL)  
*Low Sun*, Micki Meng, San Francisco, CA (US)
- 2022 *The Moth in the Moss*, Taymour Grahne Projects, London (UK)  
*Spiral Walking*, Baert Gallery, Los Angeles, CA (US)
- 2021 *Wild Shade*, Informality Gallery, London (UK)
- 2019 *Keyholes*, Brockley Gardens, London (UK)

## SELECTED GROUP EXHIBITIONS

- 2024 *Sympathetic Magic 2*, Ginny on Frederick, London (UK)  
*Present Tense*, Hauser & Wirth, Somerset (UK)
- 2023 *The Descendants*, K11 Musea, Hong Kong (HK)  
*New British Abstraction*, CICA, Vancouver (CA)  
*Considering Female Abstractions*, Green Family Art Foundation, Dallas, TX (US)
- 2022 *Sabrina*, curated by Russell Tovey, Sim Smith, London (UK)  
*New Romantics*, The Artist Room at Lee Eugene Gallery, Seoul (KR)  
*The Kingfisher's Wing*, curated by Tom Morton, GRIMM, New York, NY (US)  
*Ode to Orlando*, curated by Marcelle Joseph, Pi Artworks, London (UK)

- 2021 *Down in Albion*, L.U.P.O., Milan (IT)  
*Le coeur encore*, The approach, London (UK)  
*Wild Shade*, Informality Gallery, Henley on Thames (UK)  
*Diaries of a Climate*, Baert Gallery, Los Angeles, CA (US)  
*Deep Cut*, Asylum Chapel, London (UK)  
*cutting at lemons for freckles*, Skipplings Gallery, Great Yarmouth (UK)
- 2020 *London Grads Now*, Saatchi Gallery, London (UK)  
*RCA Graduation Show*, Kristin Hjellegjerde Gallery, London (UK)  
*50/50*, FOLD Gallery, London (UK)  
*Wet Paint*, Bowes-Parris Gallery, London (UK)  
*/st^te(r)/*, BAKIIBAK, Hastings (UK)  
*Mushrooms in the Dark*, Situationist RCA event, London (UK)  
*A fish you have already caught*, online/ London (UK)  
*The Weird and The Eerie*, Hockney Gallery, RCA, London (UK)
- 2019 *Sympathetic Magic*, Zona Mista, London (UK)  
*Dust sheet embroidered snow*, Project Gallery, Arundel (UK)  
*WIP Show*, Royal College of Art, London (UK)
- 2018 *The Value of Liveliness*, White Crypt, London (UK)  
*Smoke gets in your eye*, rural BAES, near Lewes (UK)  
*DRAW*, Mandells Gallery, Norwich (UK)
- 2017 *Rose Madder*, The Benevolent Association of Excellent Solutions, London (UK)
- 2016 *A Face Like Yours*, A.P.T. Gallery, London (UK)
- 2015 *Best of the Drawing Year 2014-2015*, Christie's, London (UK)

## SELECTED COLLECTIONS

Green Family Art Foundation, Dallas, TX (US)

He Art Museum, Guangdong Province (CN)

Institute of Contemporary Art, Miami, FL (US)

K11 Art Foundation, Hong Kong (HK)

Kröller-Müller Museum, Otterlo (NL)

Kunstmuseum, The Hague (NL)

Pond Society, Shanghai (CN)

The Rachofsky Collection, Dallas, TX (US)

The David and Indre Roberts Collection, London (UK)

Sainsbury Centre, Norwich (UK)

University of Oxford, St Hilda's College Art  
Collection, Oxford (UK)