

Klaudia Schifferle
Die Tiere Die Türe
Curated by Reto Thüring
25.05.–13.07.2024
Opening: Friday, 24.5.2024, 6pm

Galerie Mueller
Rebgasse 46
4058, Basel
contact@galeriemueller.com

Weiss Falk
Rebgasse 27
4058, Basel
info@weissfalk.com

www.galeriemueller.com
www.weissfalk.com

Galerie Mueller and Weiss Falk are pleased to announce Klaudia Schifferle *Die Tiere Die Türe*, curated by Reto Thüring, taking place across both galleries in Basel.

Influenced by the feminist ideas of the post-punk, new wave and indie scene of the 1970s, Klaudia Schifferle has always moved intuitively and uncompromisingly between different media, techniques and stylistic concepts. Schifferle's (visual) language knows hardly any boundaries and yet is clearly delineated; firmly held together by an artist who has had her finger on the pulse of time for 50 years, exploring the human condition in her own language.

The exhibition *Die Tiere Die Türe* is divided into two chapters. At Galerie Mueller, works on paper from the late 1970s to the early 1990s will be on display. Weiss Falk is showing works from the past five years. The overarching theme is metamorphosis as a symbol of an understanding of the world and art in which man and nature, self and environment are inextricably intertwined and in constant exchange. *Die Tiere Die Türe* is the first major juxtaposition of new and older works by Klaudia Schifferle.

The exhibition will be accompanied by a monographic book published by Hacienda Books, providing insight into her work from its beginnings to the present.

Klaudia Schifferle was born in Zurich in 1955. She was a founding member of the avant-garde women's band Kleenex (later LiLiPUT) in 1977 and is internationally known as a musician, songwriter and author. After spending time in Milan and Ticino, she has lived and worked in Zurich again since 2002.

She has had solo exhibitions at INK (Zurich), Aargauer Kunsthhaus (in collaboration with Kunstverein München and Bonner Kunstverein), Kunsthhaus Zurich, Museum zu Allerheiligen (Schaffhausen), Centre Pasqu'Art (Biel), Helmhaus (Zurich), Kunstplattform AKKU (Emmenbrücke), Kunsthalle Winterthur, as well as gallery exhibitions with Konrad Fischer (Zurich), Gugu Ernesto (Cologne), Elisabeth Kaufmann (Zurich), Brinkmann (Amsterdam), Pfefferle (Munich), Rigassi (Bern), Abbt Projects (Zurich), Thomas Amman Fine Arts (Zurich) and Stephan Witschi (Zurich).

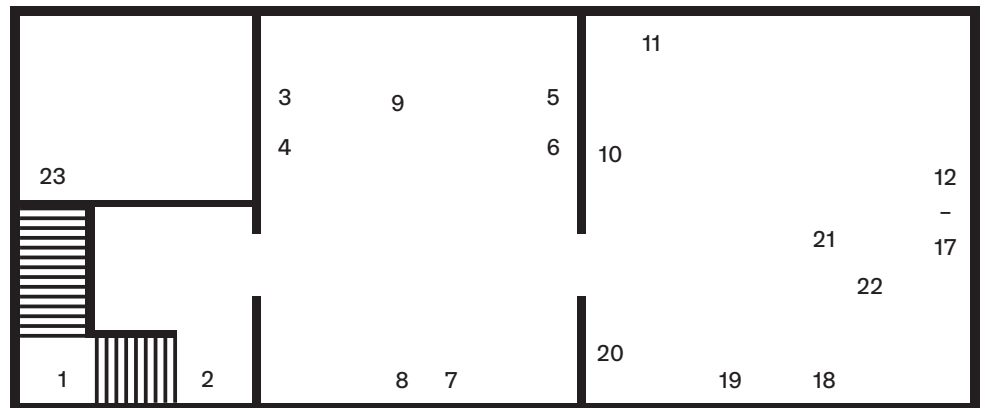
Her work has been shown internationally in important group exhibitions, including *Saus und Braus* (Städtische Galerie Strauhof, Zurich), *Bilder* (Kunstmuseum Winterthur), *documenta 7* (Kassel), *aktuell 83* (Lenbachhaus Munich), Biennale of Sydney, *tekenen 87* (Museum Boymans van Beuningen Rotterdam), *Ny Kunst 12 Kunstnere fra Schweiz* (Louisiana Museum of Modern Art, Humlebaek), *des dessins pour les élèves* (Museum für Gegenwartskunst Basel), *Schnittstellen* (Heidelberger Kunstverein), *Freie Sicht aufs Mittelmeer* (Kunsthhaus Zürich), *Von Menschen und Tieren* (Kunstmuseum Solothurn), *Tour d'Horizon*, *Werke aus der Sammlung* (Migros Museum, Zürich), *Kill All Monsters* (Ausstellungsraum Klingental, Basel), *Sommer des Zögerns* (Kunsthalle Zürich), *Ausbruch und Rausch 1975-1980* (Strauhof Zürich) and *Gina Fischli, Klaudia Schifferle: Kiosk Magic* (Tunnel Tunnel, Lausanne).

Schifferle's work is represented in numerous private and public collections, including Kunsthhaus Zürich, Aargauer Kunsthhaus, MCBA Lausanne, Kunstmuseum Solothurn, Kunstmuseum Winterthur, Museum zu Allerheiligen Schaffhausen, Centre Pasqu'Art Biel, Graphische Sammlung ETH Zürich, Migros Museum Zürich, Bank Julius Bär, Nationalbank, UBS, City of Zurich, Canton of Zurich, BAK Schweizerische Eidgenossenschaft, Fondo Carlo Cotti Lugano, Museo d'Arte Moderna Trento, Italy. She was awarded the Vordemberge Gildewart Foundation Prize (1983), the Zurich Art Society Prize (1988) and the Art Prize of the City of Zurich (2012).

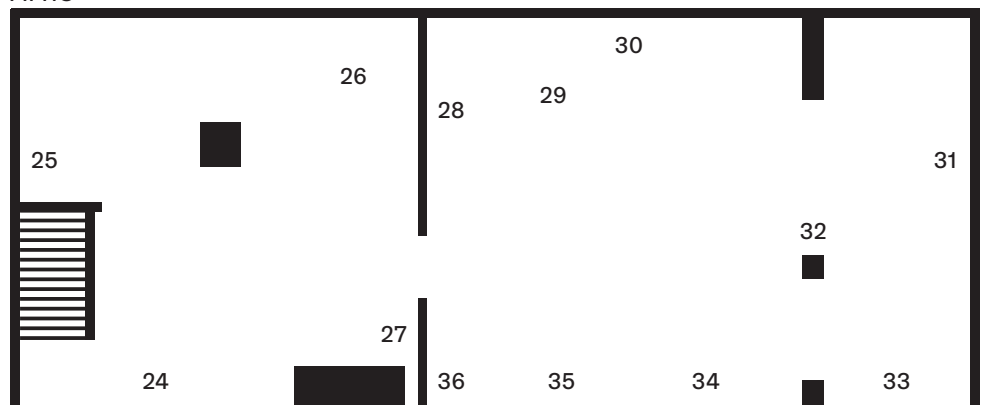


1. *Waving Hands*, 2023
Acrylic spray on print paper
28.7 × 21 cm
2. *Waving Hands*, 2023
Acrylic spray on print paper
28.7 × 21 cm
3. *Play Girls*, 2023
– Acrylic spray on canvas
8. Each: 60 × 50 cm
9. *Stormy Weather*, 2019
Various materials, synthetic resin paint
and acrylic spray
62 × 43 × 25 cm
10. *More Funky Underground*, 2020
Pencil on stone paper
21 × 29.7 cm
11. *Fire Fire*, 2023
Acrylic paint marker on print paper
83.6 × 21 cm
12. *Flowers from Outer Space*, 2024
– Nail polish and watercolour on stone
17. paper
Each: 29.6 × 21 cm
18. *Untitled*, 2022
Acrylic marker on print paper
55.4 × 43 cm
19. *Oben-Top-Haut-Boven-Arriba-Sopra*,
2024
Acrylic marker on print paper
81.5 × 43 cm
20. *Poem (For a Song, 2021)*, 2024
Acrylic spray on corrugated cardboard
19.5 × 27 cm
21. *Cowboy and Hut*, 2024
– Various materials and plaster bandages
22. Dimensions variable
23. *Autofrisur*, 2019
Print cardboard, scratched
49 × 20 cm
24. *Take a Ticket Through the Thicket*, 2023
Acrylic spray on canvas, two parts
165 × 80 cm
25. *Let Me Sleep When I Sleep*, 2020
Acrylic spray on canvas, two parts
80 × 40 cm
26. *Flow*, 2023
Various materials and plaster bandages
67 × 63 × 39 cm
27. *Old Hangers*, 2023
Chrome steel bar, plaster bandages and
car paint spray
44 × 67 × 10 cm
28. *More Funky Underground*, 2020
Pencil on stone paper
21 × 29.7 cm
29. *Bone*, 2021
Metal chair and plaster bandages
73.5 × 41 × 35 cm
30. *Untitled*, 2021
Acrylic spray on canvas
70 × 100 cm
31. *Behind the Wall*, 2024
Various materials and plaster bandages
112 × 40 × 60 cm
32. *Untitled*, 2022
Acrylic and stamping ink on wood
21 × 14.7 cm
33. *Untitled*, 2021
Acrylic spray on canvas
60 × 80 cm
34. *Untitled*, 2023
Acrylic spray on canvas
90 × 130 cm
35. *Untitled*, 2024
Acrylic spray on canvas, two parts
80 × 165 cm
36. *Play the Red Line*, 2023
5-string bass guitar, cable and plaster
bandages
Dimensions variable

FIRST FLOOR



ATTIC



23. *Autofrisur*, 2019
Print cardboard, scratched
49 × 20 cm
24. *Take a Ticket Through the Thicket*, 2023
Acrylic spray on canvas, two parts
165 × 80 cm
25. *Let Me Sleep When I Sleep*, 2020
Acrylic spray on canvas, two parts
80 × 40 cm