

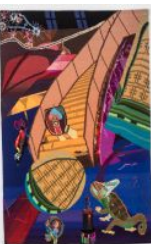
SHEILA HELD, ATTEMPTS AT A UNIFIED THEORY CHECKLIST



Sheila Held
Touch Down (From Illegal Aliens series), 1995
wool and silk on cotton warp
30h x 40w in
76.20h x 101.60w cm
SHE-95-02



Sheila Held
Sabotage the Grid (from the Text/Tiles series), 1988
wool weft on cotton warp
81h x 51w in
205.74h x 129.54w cm
SHE-88-01



Sheila Held
Evolution (from the Origins series), 2018
Wool and silk weft on cotton warp
62h x 39w in
157.48h x 99.06w cm
SHE-18-02



Sheila Held
The Hybrid Dreams of the Egg (from The Dreamers series), 2020
Wool and silk weft on cotton warp
77h x 39w in
195.58h x 99.06w cm
SHE-20-01

The Green Gallery 1500 N Farwell Ave Milwaukee, WI 53202



Sheila Held
The Rocket Dreams of the Mother Ship (from The Dreamers series), 2022
Wool and silk weft on cotton warp
80h x 40w in
203.20h x 101.60w cm
SHE-22-01



Sheila Held
Guardians of the Secret (from the Broken Symmetry series), 2021
Wool and silk weft on cotton warp
34h x 39w in
86.36h x 99.06w cm
SHE-21-01



Sheila Held
House Party (from the Phenomena + Noumena series), 2021
Wool and silk weft on cotton warp
38h x 38.50w in
96.52h x 97.79w cm
SHE-21-02



Sheila Held
House Party (from the Phenomena + Noumena series), 2021
graphite, colored pencil and tape on graph paper
16.50h x 22w in
41.91h x 55.88w cm
SHE-21-04



Sheila Held
Guardians of the Secret (from the Broken Symmetry series), 2021
graphite, colored pencil and tape on graph paper
14h x 21.25w in
35.56h x 53.98w cm
SHE-21-03



Sheila Held
The Rocket Dreams of the Mother Ship (from The Dreamers series), 2022
graphite, colored pencil and tape on graph paper
30.50h x 22.25w in
77.47h x 56.52w cm
SHE-22-02

The Green Gallery 1500 N Farwell Ave Milwaukee, WI 53202



Sheila Held
Sunnyside Up (from the Origins series), 1993
Wool and cotton weft on cotton warp
54h x 51w in
137.16h x 129.54w cm
SHE-93-01



Sheila Held
Imagines Agentes (from the Art of Memory series), 1996
Wool, silk and metallic weft on cotton warp
39h x 50w in
99.06h x 127w cm
SHE-96-01