

# Theta

## SC103 - Chimera



### SC103

*SC103 September 9, 2022, 9PM, New York, 2024*

Edition of 168

Paperback with jacket, 146 pages

9 ½ x 6 ½ in



### Sophie Andes-Gascon for SC103

*Lyric 01, 2024*

Ceramic stoneware

5 x 8 x 7 in



### Sophie Andes-Gascon for SC103

*Lyric 02 (Atlas), 2024*

Cotton and linen textiles, metal grommets, glitter, feathers, copper enamel

20 x 15 ½ x 4 in



### Sophie Andes-Gascon for SC103

*Lyric 03, 2024*

Plywood; dried beans, cotton textile, glass beads

27 x 22 ½ x 9 in



### Claire McKinney for SC103

*Lyric 04, 2024*

Paper

7 x 5 ¼ in



**Claire McKinney for SC103**

*Lyric 05*, 2024

Paper

6 ½ x 4 ¾ in



**Sophie Andes-Gascon for SC103**

*Lyric 06*, 2024

Cotton and man-made textiles

9 x 7 x 6 in



**Sophie Andes-Gascon for SC103**

*Lyric 07*, 2024

Ceramic stoneware

8 x 5 x 1 ¾ in



**Sophie Andes-Gascon for SC103**

*Lyric 08 (SC Store)*, 2024

Ceramic stoneware

6 x 9 x 7 in

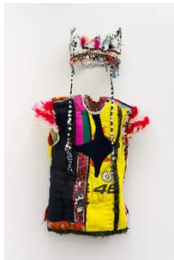


**Claire McKinney for SC103**

*Lyric 09*, 2024

Paper

15 ½ x 10 ½ in



**Sophie Andes-Gascon for SC103**

*Lyric 10 (Little Prince)*, 2024

Cotton, silk, linen and man-made textiles, glass and clay beads, assorted buttons, vinyl sequins, feathers

22 ½ x 20 ½ x 6 in (body)

25 x 10 x 7 in (crown)



**Claire McKinney for SC103**

*Lyric 11 (Passage)*, 2024

Paper

54 ½ x 12 in



**Sophie Andes-Gascon for SC103**

*Lyric 12*, 2024

Ceramic stoneware

11 x 10 x 7 ½ in



**Sophie Andes-Gascon for SC103**

*Lyric 13*, 2024

Assorted sequins, assorted buttons, silk textiles, cotton trim tape

34 x 17 x 2 in



**Sophie Andes-Gascon for SC103**

*Lyric 14 (Halo)*, 2024

Cotton, linen, wool and man-made textiles, assorted sequins, glass beads, assorted buttons, glitter, copper enamel

57 ½ x 24 ½ x 1 ½ in



**Claire McKinney for SC103**

*Lyric 15*, 2024

Leather, cotton textiles, assorted buttons and sequins

2 ¼ x 9 ½ x 15 in



**Claire McKinney for SC103**

*Lyric 16*, 2024

Silk and linen textiles, sequins, cotton cord

3 ½ x 10 x 16 in



**Sophie Andes-Gascon for SC103**

*Lyric 17, 2024*

Ceramic stoneware

25 ½ x 4 ¼ x 2



**Claire McKinney for SC103**

*Lyric 18, 2024*

Linen textiles, man-made metallic cord, cotton cord

1 ½ x 7 ½ x 11 ¾ in

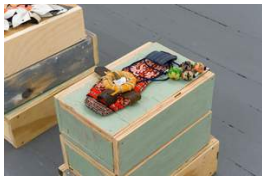


**Claire McKinney for SC103**

*Lyric 19, 2024*

Man-made and cotton textiles, cord

2 ¾ x 11 x 14 in



**Claire McKinney for SC103**

*Lyric 20, 2024*

Cotton textiles, leather, wood beads, man-made cord

2 x 8 x 11 in



**Claire McKinney for SC103**

*Lyric 21, 2024*

Cotton textiles

2 ¼ x 7 x 10 in



**Sophie Andes-Gascon for SC103**

*Lyric 22 (Nectar), 2024*

Cotton and silk textiles; vinyl sequins; washers; assorted metal discs

31 x 44 ½ x 3 in



**Claire McKinney for SC103**

*Lyric 23*, 2024

cotton rope, washers, silk textiles, paper

22 x 9 x 3 in



**Claire McKinney for SC103**

*Lyric 24 (Flute)*, 2024

Cotton, silk, man-made textiles, leather fringe

43 x 15 in

