

**The Green Gallery** 1500 N. Farwell Milwaukee, WI 53202  
Paper Paper: organized by Calvin Marcus and Donald Morgan  
Exhibition: August 11 - 27, 2016  
Reception: August 11, 2016 6-8 pm

Front Room-South



**Patrick Rock**  
*F.T.C.T.N.F. (academic sausages)*, 2016  
shredded paper academia & past due notices,  
lard, Fe<sub>3</sub>O<sub>4</sub>, hog casings, (witchcraft)  
40 x 10 x 2"



**Amy Yao**  
*Jouissance (Souvenir)*, 2014  
Each  
6.5 x 6.5"

Front Room-East

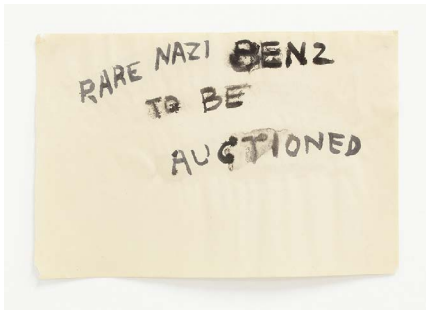


**Donald Morgan**  
*Forked Alphabet*, 2016  
Graphite on paper  
30 x 23"

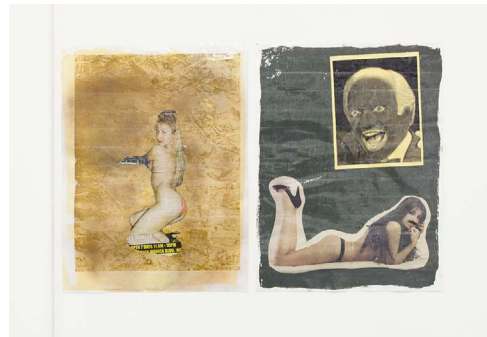


**Harold Ancart**  
*Untitled (cancer)*, 2016  
Acrylic on Paper  
20 x 24 "

**The Green Gallery** 1500 N. Farwell Milwaukee, WI 53202  
Paper Paper: organized by Calvin Marcus and Donald Morgan  
Exhibition: August 11 - 27, 2016  
Reception: August 11, 2016 6-8 pm



**Sara Clendening**  
*Nazi Benz*, 2016  
ink on paper  
12 x 17.5"



**Alex Becerra**  
*Friendly Behavior (OSB)*, 2016  
Silk screen print and mixed media on paper  
24 x 18"

*The Scene from here was great*, 2016  
Acrylic and mixed media on paper  
24 x 18"

Front Room-Floor



**Alex Becerra**  
*Pizza Box Drawings*, 2016  
11 x 8.5"



**Ravi Jackson**  
*Untitled*, 2016  
30 x 22.5"

**The Green Gallery** 1500 N. Farwell Milwaukee, WI 53202  
Paper Paper: organized by Calvin Marcus and Donald Morgan  
Exhibition: August 11 - 27, 2016  
Reception: August 11, 2016 6-8 pm



**Peter Barrickman**

clockwise starting from top right

*Breakup Calls: Hills Dump the Town*, 2016

Acrylic, colored pencil and watercolor crayon on paper  
12" x 7"

*Bus Sculpture*, 2016

Colored pencil on paper  
12" x 9"

*Roosevelt Nuages*, 2016

Acrylic and colored pencil on paper  
8".25 x 6"

*Taghzout Nuages*, 2016

Acrylic and colored pencil on paper  
10" x 7"

*Oil Shop*, 2016

Acrylic and colored pencil on paper  
10".5 x 8.5"

*Bus Sculpture*, 2016

Colored pencil on paper  
10".5 x 6".5

Front Room- North



**Rebecca Morris**

*Untitled (#224-12)*, 2012

mixed media on paper

14 x 10 inches

signed, titled, and dated on reverse

#12423



**Ruby Neri**

*Woman With Doll*

Acrylic on paper

24 x 22.5"

**The Green Gallery** 1500 N. Farwell Milwaukee, WI 53202  
Paper Paper: organized by Calvin Marcus and Donald Morgan  
Exhibition: August 11 - 27, 2016  
Reception: August 11, 2016 6-8 pm



**Mike Paré**  
clockwise from the top

*Untitled, 2015*  
Walnut Ink  
17 x 14"

*Untitled, 2015*  
India Ink  
15 x 11"

*Untitled, 2015*  
Acrylic and India Ink  
15 x 18.5"

Window

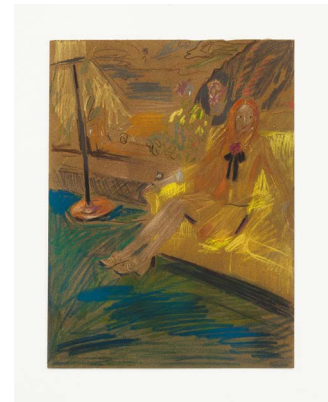


**Anna Rosen**  
*Jester/Beautiful Girls*  
mixed media  
14.5 x 13.5"

Back Room-South



**Anna Rosen**  
*Blue Beheading*  
mixed media  
13.5 x 19"

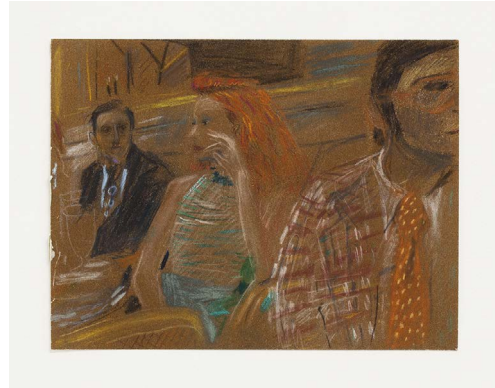


**Mari Eastman**  
*Yellow Suit, 2015*  
12.5 x 19.5"

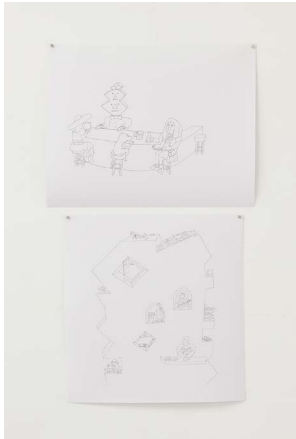
**The Green Gallery** 1500 N. Farwell Milwaukee, WI 53202  
Paper Paper: organized by Calvin Marcus and Donald Morgan  
Exhibition: August 11 - 27, 2016  
Reception: August 11, 2016 6-8 pm



**Mari Eastman**  
*Grace Coddington, 2014*  
Water color on paper  
10 x 7"



**Mari Eastman**  
*Student Painting Landscape, 2014*  
watercolor and graphite on paper  
10 x 7"



**Scott Reeder**  
*Untitled, 2005*  
digital print

Back Room- East



**Jessica Jackson Hutchins**  
*untitled, 2012*

- 1) 16 x 11.25"
- 2) 12.25 x 11.75"
- 3) 18.5 x 15.5"
- 4) 16.5 x 16.75"
- 5) 14 x 19"
- 6) 13.25 x 14.25"
- 7) 15 x 12.75"

**The Green Gallery** 1500 N. Farwell Milwaukee, WI 53202  
Paper Paper: organized by Calvin Marcus and Donald Morgan  
Exhibition: August 11 - 27, 2016  
Reception: August 11, 2016 6-8 pm

Back Room- North



**Sara Caron**  
clockwise starting from the left  
*Nudie Calender 2016, 2016*  
12 x 9"  
Ink on paper

*Nudie Calender 2016 Outake, 2016*  
9 x 12"  
Ink on paper

*Nudie Calender 2016, 2016*  
9 x 12"  
Ink on paper



**Calvin Marcus**  
*Dead Soldiers, 2015*  
14.5 x 11" each (3 total)  
Crayon Sharpie and pencil on paper

Back Room-West



**Thomas McDonell**  
*Tearblower (unknown, USA 2), 2016*  
6.5 x 8.25"  
Graphite on paper