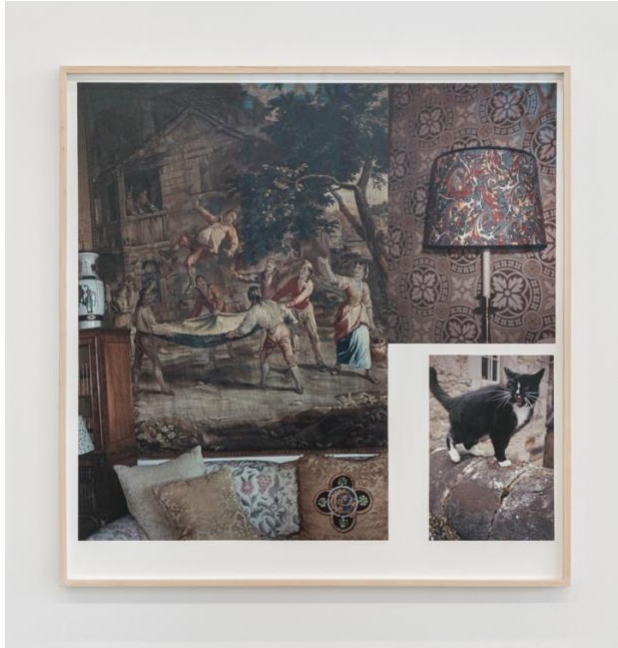


EXHIBITION CHECKLIST

Veedon Fleece by Lee Mary Manning
St Carthage Hall, Lismore Castle Arts
15 June – 18 August, 2024



Echt, 2024
71.2 x 69.6 cm



Sunny Spell, 2024
52.5 x 44.5 cm

Teleidoscope (For LB), 2024
82.6 x 64.1 cm



Our Daily Bread, 2024
78 x 46.6 cm





Kiss of the Sun, 2024
77 x 51.8 cm



*Don't Push The River (It
Flows By Itself), 2024*
57.6 x 43.7 cm

All works courtesy the artist and Canada New York

Installation photos by Jed Niezgoda