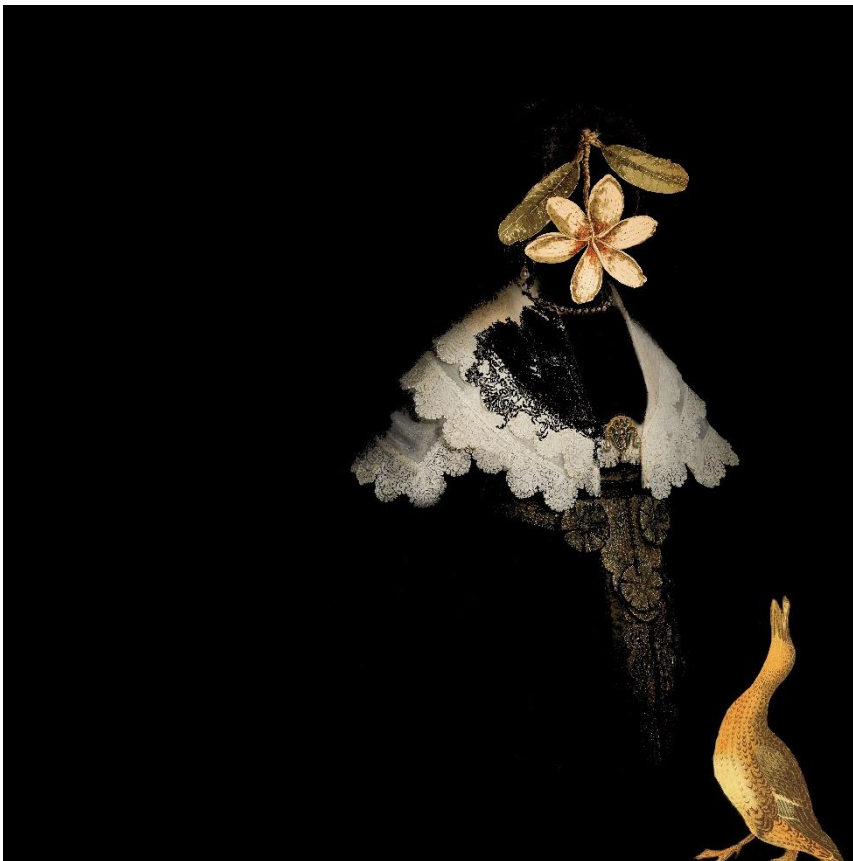


PRESS RELEASE

22.06. – 06.10.2024

patricia kaersenhout

INTO THE DEEP LOVING DARKNESS



patricia kaersenhout, *Non Sine Periculo*, 2024. Courtesy the artist

*I intended both to tell an impossible story and to amplify
the impossibility of its telling.*

Saidiya Hartman, 2008



Into The Deep Loving Darkness is patricia kaersenhout's first solo exhibition in Germany. This exhibition pulls at multiple threads through kaersenhout's decades long artistic practice to create a total installation that mines the violences of the archive and redresses them through emotionally evocative and performative encounters with her audience.

kaersenhout has dedicated her life's work to tending to the history of enslaved peoples of colors across the diaspora. Through a decolonial lens kaersenhout posits that history is here with us, in the present. *Into The Deep Loving Darkness* performs this wisdom through a multitude of obsidian mirrors that position the audience inside the scenes of erasure and invites them to challenge the distance between historical realities and their own self image.

Into The Deep Loving Darkness tends to our collective wounds in an expansive manner, moving from imbuing dignity in *Our Light will outlast their flags* to hammering in on the investment in violence that is apparent in King Louis XIV of France's 1685 Code Noir. *Of Palimpsests & Erasure* continues the care work of sounding out the silences of the archive, bringing the work of black women into frame through works such as *The Return of the Hummingbird Women*, *Distant bodies*, and *Vrouwen van Vos*.

Into The Deep Loving Darkness takes seriously the question of revisiting the scenes of subjection without replicating the grammar of violence. kaersenhout, a celebrated artist, emerges as a critical nurse retroactively digging into history and offering up new un-disciplinary strategies to healing the past through re-enacting it in the present.

Curator: Musoke Nalwoga

Exhibition team: Monja Remmers, Linus Jantzen

Guest Artists: Bouba Dola, Justin F. Kennedy, Thomas Kilpper, Fazle Shairmahomed, Joy Mariama Smith



GUEST ROOM

For each exhibition, artists are invited to make use of the space that was originally a guest room in the Villa Salve Hospes as a commentary on the main presentation. At patricia kaersenhout's invitation, we are delighted to welcome the artist BOUBA DOLA.

Bouba Dola is a multi-talented artist, based in Rotterdam, Netherlands. He was born in Kinshasa, the capital of the Democratic Republic of Congo, and came to the Netherlands as the child of political refugees. Known for his diverse artistic expressions, including digital collage, set design for theater, film direction, music compositions, and video production, Dola's digital collages strike with their bold, vibrant colors and their unique blend of traditional and contemporary elements.

Into The Deep Loving Darkness is supported by:



VR-Stiftung der Volksbanken und Raiffeisenbanken in Norddeutschland



Volksbank
BraWo



Königreich der Niederlande



Niedersächsisches Ministerium
für Wissenschaft und Kultur

