

## ARTWORK LIST



Krzysztof Strzelecki  
*Cruising spot*, 2024  
Glazed ceramic stoneware  
21.5 x 11.5 x 14 cm | 8 1/2 x 4 1/2 x 5 1/2 in  
KS\_004



Krzysztof Strzelecki  
*Forest spot*, 2024  
Glazed ceramic stoneware  
26.5 x 20.5 x 11.5 cm | 10 1/2 x 8 x 4 1/2 in  
KS\_005



Krzysztof Strzelecki  
*Behind the Dune*, 2024  
Glazed ceramic stoneware  
16.5 x 26 x 9 cm | 6 1/2 x 10 1/4 x 3 1/2 in  
KS\_006



Mevlana Lipp  
*Longing*, 2024  
Wood, velvet, sand, acrylic, ink, aluminum stretcher  
40 x 45 cm | 23 1/2 x 18 in  
ML\_001



Erin Woodbrey  
*Time Being (Burl)*, 2020  
Unique gum transfer on handmade paper  
Unframed: 43 x 30.5 cm | 17 x 12 in  
Framed: 52 x 39.5 cm | 20 1/2 x 15 1/2 in  
EKW\_136



Juan Arango Palacios  
*Socorro*, 2024  
Cotton plain weave, inlay  
178 x 109 cm | 70 x 43 in  
JAP\_054



Juan Arango Palacios  
*Ángel Caído*, 2024  
Cotton plain weave, inlay  
127 x 109 cm | 50 x 43 in  
JAP\_055

# Gaa



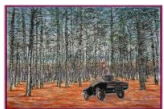
Alex McAdoo  
*Donovan Avenue and Falls Road, 2024*  
Oil on linen  
101.5 x 162.5 cm | 40 x 64 in  
AMC\_001



Alex McAdoo  
*Australian Garden and Acacia Place, 2024*  
Oil on linen  
183 x 152.5 cm | 72 x 60 in  
AMC\_002



Alex McAdoo  
*Noon Road, 2024*  
Oil on linen  
101.5 x 162.5 cm | 40 x 64 in  
AMC\_003



Ena Swansea  
*kill the headlights and put it in neutral, 2024*  
Acrylic and oil on linen  
124 x 185 cm | 48 3/4 x 72 3/4 in  
ES\_025



Anastasia Komar  
*Plexus, 2023*  
Acrylic and pigmented polymer on board  
51 x 41 x 5 cm | 20 x 16 x 2 in  
ANK\_001



Wen Liu  
*Inarticulate Trace No.4, 2024*  
Prescribed herbal medicine, epoxy clay, resin, paint, UV resistant varnish  
110 x 101.5 x 4 cm | 43 x 40 x 1.5 in  
WL\_001



Josh Dihle  
*Mr. Sun, 2024*  
Acrylic and oil on linen over panel  
46 x 35.5 x 4 cm | 18 x 14 x 1.5 in  
JOD\_001

# Gaa



Josh Dihle  
*Blue Head, 2023*  
Fossil, amber, shell, colored pencil, and casein on carved walnut  
11.5 x 10 x 4 cm | 4 1/2 x 4 x 1 1/2 in  
JOD\_002



Josh Dihle  
*Fish, 2024*  
Fossil, amber, shell, colored pencil, and casein on carved walnut  
11.5 x 7.5 x 4 cm | 4 1/2 x 3 x 1 1/2 in  
JOD\_003



Josh Dihle  
*Virtuous Pagans II, 2022*  
Colored pencil and casein on wood  
46 x 35.5 x 4 cm | 18 x 14 x 1.5 in  
JOD\_004



Anna Ruth  
*The Last Moth, 2024*  
Acrylic on canvas  
35 x 35 cm | 14 x 14 in  
AR\_001



Anna Ruth  
*Meadow, 2024*  
Acrylic on canvas  
35 x 35 cm | 14 x 14 in  
AR\_002



Anna Ruth  
*Tassel, 2024*  
Acrylic on canvas  
35 x 35 cm | 14 x 14 in  
AR\_003