

The Green Gallery

1500 N Farwell Ave
Milwaukee, WI 53202

Michelle Grabner

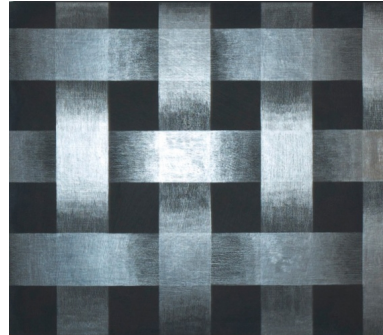
Cottage Work

Preview:

Friday, January 20, 7 – 9 pm

Public Reception:

Saturday, January 21, 4 – 8 pm



Exhibition:

January 21st – February 26th

Drew Heitzler

*Spiral Jetty / Crystal Voyager / Region Centrale
(Bootlegged, Re-ordered, Combined, Sometimes More,
Sometimes Less)*



Please join The Green Gallery this coming Friday, January 20th between 7 and 9 pm for a preview of our upcoming exhibitions by Chicago based artist Michelle Grabner and Los Angeles based artist Drew Heitzler. This will be an intimate opportunity to meet the artists and see the show before the public launch. Refreshments and cocktails will be served.

Michelle Grabner's *Cottage Work* evokes the long-debated critical relationship between the fine arts and craft. The title itself implies an association with the informal and practical traditions of craft, particularly weaving. The new series of paintings on panel embed woven patterns that Grabner creates by pulling out the warp and weft threads of burlap, linen, and needlepoint canvases. Encasing them in the traditional painting medium of gesso, these paintings feature a monochromatic vocabulary of grid patterns and material reliefs. A series of recent gingham pattern paintings will also be shown. Critic Barry Schwabsky writes that, "Her paintings refer to the traditionally feminine realm of the domestic by way of the metaphorically loaded imagery of fabrics and textiles--not only blankets and curtains but rugs, clothing, and so on."

Los Angeles-based artist Drew Heitzler presents a three-channel video projection entitled *Spiral Jetty / Crystal Voyager / Region Centrale (Bootlegged, Re-ordered, Combined, Sometimes More, Sometimes Less)*, 2011. The video projection is an appropriation of three experimental 70's films by Robert Smithson, Michael Snow, and George Greenough.

For more info:

<http://www.thegreengallery.biz/cottage-work-michelle-grabner>