

# ALTMAN SIEGEL

1150 25TH ST. SAN FRANCISCO, CA 94107

tel: 415.576.9300 / fax: 415.373.4471

www.altmansiegel.com

*Magicians less prone to mental disorders than other artists, research suggests*  
Curated by Quintessa Matranga  
July 18 – August 23, 2024

## Gallery 1



**Rosalind Nashashibi**  
*Hairnet and Hyacinths*, 2024  
Oil on canvas  
15 3/4 x 11 3/4 in  
40 x 30 cm  
(M-P24-14)



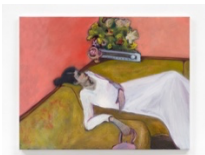
**Justin Caguiat & Rafael Delacruz**  
*Crucifixion*, 2024  
Oil on canvas  
90 x 77 1/2 in  
228.6 x 196.8 cm  
(M-P24-27)



**Merlin James**  
*Interior With Dried Flowers*, 1990  
Acrylic on canvas  
35 3/8 x 41 3/4 in  
89.9 x 106 cm  
(M-P90-03)



**Merlin James**  
*Digger*, n.d.  
Acrylic on sack cloth  
14 5/8 x 17 3/8 in  
37.1 x 44.1 cm  
(M-P-10)



**Rosalind Nashashibi**  
*Salon d'Honneur*, 2024  
Oil on canvas  
33 1/2 x 43 1/4 in  
85 x 110 cm  
(M-P24-10)

# ALTMAN SIEGEL

1150 25TH ST. SAN FRANCISCO, CA 94107

tel: 415.576.9300 / fax: 415.373.4471

www.altmansiegel.com



**Merlin James**  
*Double Bed*, (c. 1989), 2022  
Acrylic on canvas  
20 1/4 x 16 in  
51.4 x 40.6 cm  
(M-P89-01)



**Merlin James**  
*Open Door*, (c. 1989), 2022  
Acrylic on canvas  
20 7/8 x 18 1/8 in  
53 x 46 cm  
(M-P89-02)



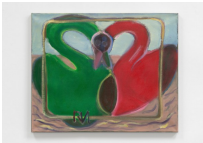
**Merlin James**  
*Causeway, Cloud*, 2024  
Acrylic on canvas  
18 1/2 x 19 1/8 in  
47 x 48.5 cm  
(M-P24-26)



**Merlin James**  
*Large Red Sea*, 2005  
Acrylic on canvas  
41 x 54 3/8 in  
104.1 x 138.1 cm  
(M-P05-03)



**Merlin James**  
*Toll Booth*, c. 1986  
Acrylic on canvas  
33 7/8 x 38 1/4 in  
86 x 97.2 cm  
(M-P86-02)



**Rosalind Nashashibi**  
*Intersecting swans*, 2024  
Oil on canvas  
3 5/8 x 27 1/2 in  
60 x 70 cm  
(M-P24-16)

# ALTMAN SIEGEL

1150 25TH ST. SAN FRANCISCO, CA 94107

tel: 415.576.9300 / fax: 415.373.4471

[www.altmansiegel.com](http://www.altmansiegel.com)



**Rosalind Nashashibi**

*Here While I Disappear*, 2024

Oil on canvas

33 1/2 x 43 1/4 in

85 x 110 cm

(M-P24-13)