

# CANDICE MADEY

## DARREL ELLIS AND MIGUEL FERRANDO

September 5–October 25, 2024



### Miguel Ferrando

*Darrel Ellis*, ca. 1981–1982

Watercolor on paper

29 3/8 x 37 3/8 inches (framed)

74.6 x 94.9 cm

22 x 30 inches (paper size)

55.9 x 76.2 cm

(MFE012)



### Miguel Ferrando

*My Father Likes It (Colonialism Monument: Iglesia Sagrado Corazón de Jesús, Moca, D.R.)*,

ca. 1981–1982

Gouache on paper

51 x 37 1/8 inches (framed)

129.5 x 94.3 cm

43 7/8 x 30 inches (paper size)

111.4 x 76.2 cm

(MFE004)



### Miguel Ferrando

*Untitled (Colonialism Monument: Palacio de Bellas Artes, Santo Domingo, D.R.)*, ca. 1981–1982

Gouache on paper

51 x 37 1/8 inches (framed)

129.5 x 94.3 cm

43 7/8 x 30 inches (paper size)

111.4 x 76.2 cm

(MFE006)

# CANDICE MADEY



**Darrel Ellis**

*Untitled (Pietà Series)*, ca. 1984–1985

Ink and wash on paper

39 x 31 inches (framed)

99.1 x 78.7 cm

32 x 24 inches (paper size)

81.3 x 61 cm

(ELL790)



**Miguel Ferrando**

*Untitled (Dogwood)*, ca. 1992–1993

Gouache and watercolor on paper

21 5/8 x 18 inches (framed)

54.9 x 45.7 cm

15 x 11 inches (paper size)

38.1 x 27.9 cm

(MFE013)



**Miguel Ferrando**

*Self Portrait (Red)*, ca. 1975–1978

Watercolor on paper

21 1/8 x 17 3/4 inches (framed)

53.7 x 45.1 cm

15 x 11 inches (paper size)

38.1 x 27.9 cm

(MFE002)



**Darrel Ellis**

*Untitled (Figure)*, ca. 1983–1987

Ink and wash on paper

25 x 31 inches (framed)

63.5 x 78.7 cm

19 1/4 x 25 inches (paper size)

48.9 x 63.5 cm

(ELL810)

# CANDICE MADEY



**Miguel Ferrando**

*Untitled (Dogwood Branch in Bloom)*, ca. 1992

Copper ink and watercolor on rice paper

37 1/8 x 28 1/8 inches (framed)

94.3 x 71.4 cm

30 x 22 inches (paper size)

76.2 x 55.9 cm

(MFE015)



**Miguel Ferrando**

*Untitled (Todd)*, ca. 1991–1992

Watercolor on paper

13 3/8 x 14 3/4 inches (framed)

34 x 37.5 cm

6 x 8 inches (paper size)

15.2 x 20.3 cm

(MFE009)



**Darrel Ellis**

*Untitled (Miguel)*, c. 1982–1984

Gelatin silver print

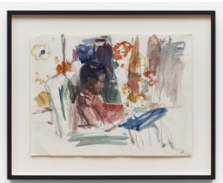
19 x 15 inches (framed)

48.3 x 38.1 cm

10 x 8 in (paper size)

25.4 x 20.3 cm

(ELL923)



**Darrel Ellis**

*Untitled (Seated Figure)*, 1982

Graphite and watercolor on paper

25 x 31 inches (framed)

63.5 x 78.7 cm

18 x 24 inches (paper size)

45.7 x 61 cm

(ELL457)

# CANDICE MADEY



**Miguel Ferrando**

*Untitled (Birds of Paradise)*, ca. 1992–1995

17 7/8 x 21 5/8 inches (framed)

45.4 x 54.9 cm

11 1/4 x 15 inches (paper size)

28.6 x 38.1 cm

(MFE020)



**Miguel Ferrando**

*Untitled (Daisies in Artist Vase)*, ca. 1991–1992

Watercolor on paper

29 3/8 x 37 1/8 inches (framed)

74.6 x 94.3 cm

22 x 30 inches (paper size)

55.9 x 76.2 cm

(MFE010)



**Miguel Ferrando**

*Untitled (Da Vinci Book by Kenneth Clark and Red Rose)*, ca. 1992–1993

Gouache on paper

21 5/8 x 18 inches (framed)

54.9 x 45.7 cm

15 x 11 inches (paper size)

38.1 x 27.9 cm

(MFE014)



**Miguel Ferrando**

*Untitled (Colonialism Monument: Monumento a los Héroes de la Restauración, Santiago, D.R.)*,

ca. 1981–1982

Gouache on paper

51 x 37 1/8 inches (framed)

129.5 x 94.3 cm

43 7/8 x 30 inches (paper size)

111.4 x 76.2 cm

(MFE007)

# CANDICE MADEY



**Darrel Ellis**

*Untitled (Miguel and Figures)*, ca. 1984

Pen, ink, and ink wash on paper

43 1/8 x 31 1/8 inches (framed)

109.5 x 79.1 cm

34 x 27 inches (paper size)

86.4 x 68.6 cm

(ELL468)



**Darrel Ellis**

*Untitled (Self-Portrait)*, ca. 1980–1990

Ink and ink wash on paper

22 x 20 inches (framed)

55.9 x 50.8 cm

14 x 12 inches (paper size)

35.6 x 30.5 cm

(ELL775)



**Miguel Ferrando**

*Untitled*, ca. 1991–1992

Watercolor on paper

29 x 36 1/2 inches (framed)

73.7 x 92.7 cm

22 x 30 inches (paper size)

55.9 x 76.2 cm

(MFE008)



**Miguel Ferrando**

*Untitled (Darrel Ellis)*, ca. 1976–1980

Watercolor on paper

13 3/4 x 14 1/4 inches (framed)

34.9 x 36.2 cm

6 1/4 x 7 1/4 inches (paper size)

15.9 x 18.4 cm

(MFE005)

# CANDICE MADEY



**Miguel Ferrando**

*Untitled (Van Gogh and Dolls)*, ca. 1980–1985

Watercolor on paperboards attached by artist to  
watercolor paper

37 x 31 1/8 inches (framed)

94 x 79.1 cm

29 3/4 x 23 1/2 inches (paper size)

75.6 x 59.7 cm

(MFE016)



**Darrel Ellis**

*Pietà #3*, 1984

Ink, wash. and graphite on paper

24 7/8 x 30 7/8 inches (framed)

63.2 x 78.4 cm

18 x 23 7/8 inches (paper size)

45.7 x 60.6 cm

(ELL652)



**Darrel Ellis**

*Untitled (Woman)*, ca. 1980–1990

Pen, ink, and ink wash on paper

18 x 15 1/2 inches (framed)

45.7 x 39.4 cm

11 x 8 1/2 inches (paper size)

27.9 x 21.6 cm

(ELL682)



**Darrel Ellis**

*Pietà #1*, 1984

Ink, wash. and graphite on paper

33 1/8 x 27 1/8 inches (framed)

84.1 x 68.9 cm

23 7/8 x 18 1/8 inches (paper size)

60.6 x 46 cm

(ELL649)

# CANDICE MADEY



**Darrel Ellis**

*Untitled (Todd and Miguel)*, ca. 1982–1984

Gelatin silver print

19 x 15 inches (framed)

48.3 x 38.1 cm

10 x 8 inches (paper size)

25.4 x 20.3 cm

(ELL922)



**Darrel Ellis**

*Untitled (Todd and Miguel)*, ca. 1982–1984

Gelatin silver print

18 7/8 x 14 7/8 inches (framed)

47.9 x 37.8 cm

10 x 8 inches (paper size)

25.4 x 20.3 cm

(ELL894)

## BACK OFFICE



**Darrel Ellis**

*Untitled (Nude)*, ca. 1980–1985

Ink and ink wash on paper

20 1/2 x 29 5/8 inches (framed)

52.1 x 75.2 cm

13 x 22 1/2 inches (paper size)

33 x 57.1 cm

(ELL455)

## FRONT OFFICE



**Miguel Ferrando**

*Untitled (Sun Series)*, 1993

14 5/8 x 16 5/8 inches (framed)

37.1 x 42.2 cm

7 7/8 x 10 inches (paper size)

20 x 25.4 cm

(MFE019)