

Jan Paul Evers



Das Aleph, 2020/2021 silver
gelatine print on baryta
paper, hand print,
90 × 70 cm
framed: 104 × 84 cm

unique

JEv_2021_001



Kismet, 2020/2021
silver gelatine print on baryta
paper, hand print
78 × 76,5 cm
framed: 86 × 85 cm

unique

JEv_2021_003



Fatum, 2020/2021
silver gelatine print on baryta
paper, hand print,
91 × 98 cm
framed: 106 × 99 cm

unique

JEv_2021_005



Prophet, 2020/2021
silver gelatine print on baryta
paper, hand print,
145 × 103 cm
framed: 153 × 113 cm

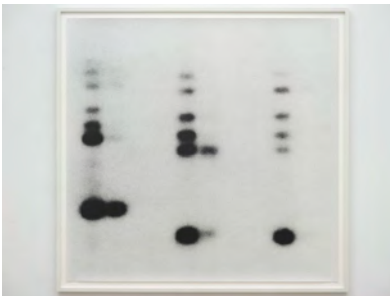
unique

JEv_2021_006



Beth, 2020/2021
silver gelatine print on baryta
paper, hand print
145 × 95 cm
framed: 151 × 104 cm

unique
JEv_2021_008



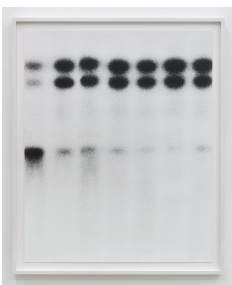
Katechon, 2020/2021
silver gelatine print on baryta
paper, hand print
135 × 130 cm,
framed: 142 × 145 cm

unique
JEv_2021_011



Zahir, 2020/2021
silver gelatine print on baryta
paper, hand print
69 × 63,9 cm
framed 78 × 72,5 cm

unique
JEv_2021_012



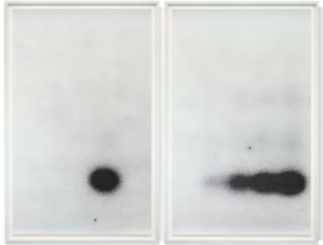
Arcana, 2020/2021
silver gelatine print on baryta
paper, hand print
90 × 71,5 cm
framed: 97,5 × 80 cm

unique
JEv_2021_013

Kadel Willborn

Birkenstraße 3
D-40233 Düsseldorf

info@kadelwillborn.de
www.kadel-willborn.de



Demiurg, 2020/2021
silver gelatine print on baryta
paper, hand print
each: 164,5 × 104,5 cm
total framed dimension: 164,5 x
213 cm

unique
JEv_2021_015